

Converting Colors

HunterLab(18.0142, 13.0743,
5.6756)

Have a look what the booklet for
HunterLab(18.0142, 13.0743,
5.6756) contains.

HunterLab(18.1541, 13.0938, 5.6994)	3
<i>Conversions</i>	4
<i>Details</i>	6
<i>Harmonies</i>	12
<i>Previews</i>	24
<i>Color Blindness Simulation</i>	28
<i>CSS Examples</i>	31

Color

**HunterLab(18.1541, 13.0938,
5.6994)**

Conversions

Conversions Part 1

Format	Color
Hex	532525
RGB	83, 37, 37
RGB Percent	33%, 15%, 15%
CMY	0.6745, 0.8549, 0.8549
CMYK	0.00, 0.55, 0.55, 0.67
HSL	0°, 38%, 24%
HSV	0°, 55%, 33%
XYZ	4.5628, 3.2957, 2.1459
YIQ	50.7540, 27.4160, 9.7520

Conversions

Conversions Part 2

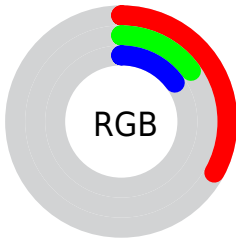
Format	Color
RYB	83, 37, 37
Decimal	5448997
CIELab	21.19, 21.41, 10.10
CIElCh	21, 23.673, 25.255
Yxy	3.2959, 0.4561, 0.3294
Android (android.graphics.Color)	4283639077 (0xFF532525)
YUV	50.7540, -6.7807, 28.2797
Hunter-Lab	18.1541, 13.0938, 5.6994

Details

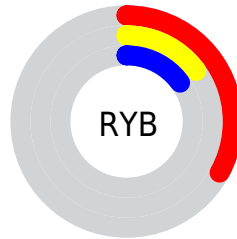
The HunterLab color **18.1541, 13.0938, 5.6994** is a dark color, and the websafe version is hex **663333**. A complement of this color would be **26.8402, -10.9425, -1.7302**, and the grayscale version is **18.1282, -0.9673, 0.9849**.

A 20% lighter version of the original color is **34.5639, 14.9537, 7.8667**, and **6.4193, 10.9932, 4.1480** is the 20% darker color. If you saturate the color by 10%, you get **16.7048, 15.8329, 6.5135**, and if you desaturate by 10%, it is **19.8260, 10.2913, 4.8815**.

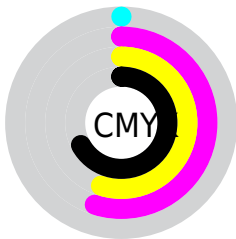
Distribution



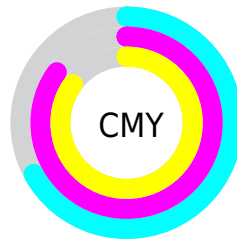
- Red (33%)
- Green (15%)
- Blue (15%)



- Red (33%)
- Yellow (15%)
- Blue (15%)



- Cyan (0%)
- Magenta (55%)
- Yellow (55%)
- Black (67%)



- Cyan (67%)
- Magenta (85%)
- Yellow (85%)

Brightness & Saturation Gradients

These gradients show how the HunterLab color 18.1541, 13.0938, 5.6994 changes by changing the brightness by 10 percent. The first figure shows a shift by +10% for each color and the second figure -10%.

Similar to the brightness gradients but the following saturation gradients show a change of the HunterLab color 18.1541, 13.0938, 5.6994 by changing the saturation by 10% instead.

■ 18.1541, 13.0938,
5.6994

■ 18.1541, 13.0938,
5.6994

■ 114.8160, 17.5920,
16.0267

■ 11.3494, 11.9908,
4.5858

■ 34.6191, 14.8218,
8.0725

■ 3.6326, 25.4888,
2.5428

■ 44.0848, 15.4891,
9.2132

0.0000, NaN, NaN

0.0000, NaN, NaN

■ 54.2839, 16.0480,
10.3430

0.0000, NaN, NaN

■ 65.1670, 16.5116,
11.4697

0.0000, NaN, NaN

■ 76.6935, 16.8901,
12.5984

0.0000, NaN, NaN

0.0000, NaN, NaN

■ 88.8293, 17.1920,

13.7326

0.0000, NaN, NaN

101.5452, 17.4241,
14.8747

18.1541, 13.0938,
5.6994

18.1541, 13.0938,
5.6994

16.7048, 15.8329,
6.5135

19.8260, 10.2913,
4.8815

15.5101, 18.3680,
7.2768

21.6865, 7.5204,
4.0871

14.5988, 20.5109,
7.9291

23.7071, 4.8283,
3.3306

13.8921, 22.3227,
8.4853

25.8636, 2.2345,
2.6169

13.5613, 23.2224,
8.7629

28.1362, -0.2583,
1.9454

■ 30.5089, -2.6561,
1.3129

■ 32.9689, -4.9688,
0.7153

■ 35.5056, -7.2073,
0.1480

■ 38.1106, -9.3823,
-0.3930

Harmonies

Analogous

The Analogous color harmony consists of three colors that are next to each other on the color wheel.



18.1546, 14.7279, -0.1186



18.1541, 13.0938, 5.6994



18.1546, 7.4797, 8.7457

Triad

The Triadic color harmony groups three colors that are evenly spaced from another and form a triangle on the color wheel.



18.1546, 13.0926, 5.6997



18.1546, -10.8763, 6.9385



18.1546, -2.0846, -17.2902

Complementary

The Complementary color scheme is a pair of colors which are on the opposite of each other on the color wheel.



18.1541, 13.0938, 5.6994



26.8402, -10.9425, -1.7302

Split Complementary

Split-complementary colors differ from the complementary color scheme. The scheme consists of three colors, the original color and two neighbors of the complement color.



18.1546, -8.1101, -13.2402



18.1541, 13.0938, 5.6994



18.1546, -12.6649, 2.0294

Square

The Square scheme is like the rectangle color scheme, but the four colors are evenly spaced on the color wheel.



18.1546, 13.0926, 5.6997



18.1546, -6.4323, 9.2442



18.1546, -11.7356, -5.4679



18.1546, 5.2265, -15.1070

Rectangle

The Rectangle color scheme consists of four colors that form a rectangle on the color wheel.



18.1541, 13.0938, 5.6994



18.1546, 2.6353, 9.5928



18.1546, -11.7356, -5.4679



18.1546, -4.3136, -16.5793

Sweetspot

The Sweet Spot groups the original color and five complimentary colors.



18.1546, 13.0926, 5.6997



33.1340, 3.6329, 3.6107



19.4594, 19.0589, -12.6097



16.3135, 1.9626, 1.8360



67.9972, -3.6282, 3.6944



19.0543, -1.0167, 1.0353

Same Dimension

The Same Dimension uses a secret algorithm to generate beautiful new colors.



18.1546, 13.0926, 5.6997



21.1612, 21.9742, 8.8937



22.8129, 3.2457, 9.5651



13.8019, 0.2763, 1.0894



17.2517, 29.5423, 11.1476



41.4300, 70.9485, 26.7710

Inverse Universe

The Inverse Universe completely reimagines the original color for something new.



26.8402, -10.9425, -1.7302



34.5868, -15.9795, -2.8597



20.6145, -1.9578, -10.8687



14.5565, -1.7369, 0.4690



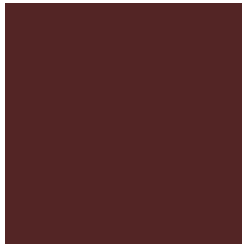
33.1984, -17.5991, -3.5037



79.7269, -42.2646, -8.4145

Previews

White Background



This preview shows how the HunterLab color 18.1541, 13.0938, 5.6994 looks on a white background.

Color Contrast Check

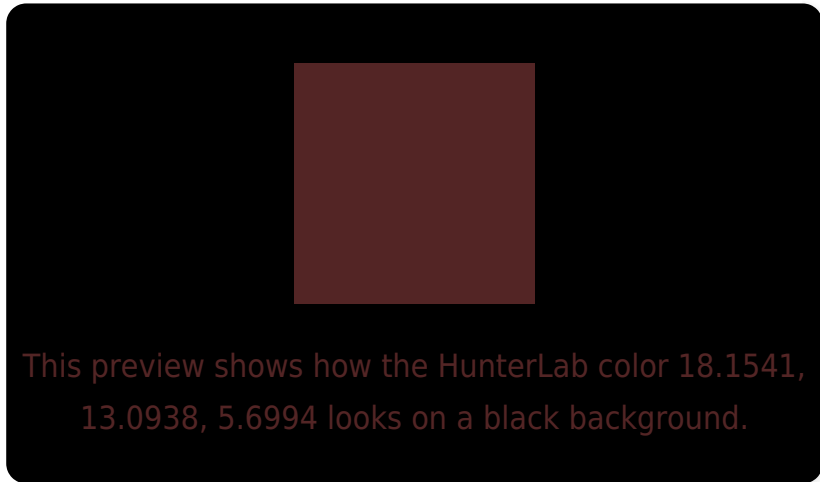
Large Text (above 18pt) WCAG AA ✓ Pass

Any Text WCAG AA ✓ Pass

Large Text (above 18pt) WCAG AAA ✓ Pass

Any Text WCAG AAA ✓ Pass

Black Background



Color Contrast Check

Large Text (above 18pt) WCAG AA × Fail

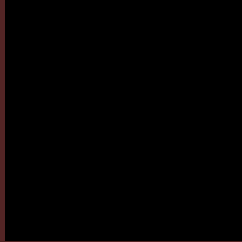
Any Text WCAG AA × Fail

Large Text (above 18pt) WCAG AAA × Fail

Any Text WCAG AAA × Fail

If you want to check with other color combinations, try the [Color Contrast Checker](#).

HunterLab 18.1541, 13.0938, 5.6994 Background



This preview shows how black text looks on a background with the HunterLab color 18.1541, 13.0938, 5.6994.



This preview shows how white text looks on a background with the HunterLab color 18.1541, 13.0938,

Color Blindness Simulation

Color vision deficiency is a very complex topic, and I could not describe the different causes any better than Wikipedia does, so if you want to learn more, you should check out their [article about color blindness](#).

Dichromacy



Original Color

18.1541, 13.0938, 5.6994

Protanopia

18.4989, -1.4577, 3.7362

Deuteranopia

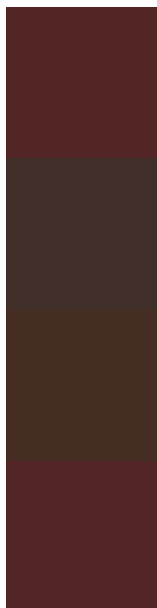
18.2814, 1.0908, 6.1270



Tritanopia

18.1896, 13.2608, 5.1839

Trichromacy



Original Color

18.1541, 13.0938, 5.6994

Protanomaly

18.2125, 3.3796, 4.4522

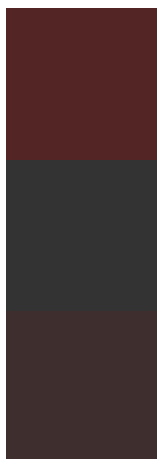
Deuteranomaly

18.1831, 5.3129, 5.8550

Tritanomaly

18.1716, 13.1763, 5.4449

Monochromacy



Original Color

18.1541, 13.0938, 5.6994

Achromatopsia

18.1947, -0.9708, 0.9886

Achromatomaly

17.9109, 3.7365, 2.5458

CSS Examples

Text

The CSS property to change the color of the text to HunterLab 18.1541, 13.0938, 5.6994 is called "color". The color property can be set on classes, ids or directly on the HTML element.

This example shows how text in the color `rgb(83, 37, 37)` looks like.

```
.text, #text, p{  
    color:rgb(83, 37, 37)  
}
```

If you want to add a text shadow in that color use the text-shadow property, you can generate a text shadow directly with our [CSS Text Shadow Generator](#).

Here you see how black text with a 4 pixel rgb(83, 37, 37) colored shadow looks like.

```
.shadow{ text-shadow: 4px 4px 2px rgb(83, 37, 37) }
```

Border

The CSS property to change the border of an element to HunterLab 18.1541, 13.0938, 5.6994 is called "border". The border property can be set on classes, ids or directly on the HTML element.

This example shows the color as border, it can be applied via the CSS property "border" or "border-color".

```
.border, #border, table{ border:4px solid rgb(83, 37, 37) }
```


If only the border color should be changed use the property `border-color`.

```
.border{ border-color:rgb(83, 37, 37) }
```

If you want to add a box shadow in that color use:

Here you see how a box with a 4 pixel `rgb(83, 37, 37)` colored shadow looks like.

```
.boxshadow{ -moz-box-shadow:4px 4px 4px  
4px rgb(83, 37, 37); -webkit-box-  
shadow:4px 4px 4px 4px rgb(83, 37, 37);  
box-shadow:4px 4px 4px 4px rgb(83, 37, 37)  
}
```

Background

The CSS property to change the background color of an element to HunterLab 18.1541, 13.0938, 5.6994 is called "background". The background property can be set on classes, ids or directly on the HTML element.

```
.background, #background, body{  
background: rgb(83, 37, 37) }
```

If only the background color should be changed can be used:

```
.background{ background-color: rgb(83, 37,  
37) }
```

This example shows the color as background, it is applied via the CSS property "background".

To optimize and compress your CSS code, you can use our [online CSS compressor and optimizer](#) based on csstidy. If you want to create a linear or radial gradient as background or border, check our [CSS Gradient Generator](#).

Hey! You found this booklet interesting? Support Converting Colors with the new Membership Option!

The pro membership hides all ads, plus gives you double the colors in the color bucket, and more awesome pro features!

[Learn more, Memberships starting at \\$2.50/m!](#)

**Follow me
on Twitter!**

@ConvertingColor