

Converting Colors

HunterLab(18.0142, 8.8765,
4.0491)

Have a look what the booklet for
HunterLab(18.0142, 8.8765, 4.0491)
contains.

HunterLab(17.9134, 8.8578, 3.9431)	3
<i>Conversions</i>	4
<i>Details</i>	6
<i>Harmonies</i>	12
<i>Previews</i>	24
<i>Color Blindness Simulation</i>	28
<i>CSS Examples</i>	31

Color

**HunterLab(17.9134, 8.8578,
3.9431)**

Conversions

Conversions Part 1

Format	Color
Hex	4A292A
RGB	74, 41, 42
RGB Percent	29%, 16%, 16%
CMY	0.7098, 0.8392, 0.8353
CMYK	0.00, 0.45, 0.43, 0.71
HSL	358°, 29%, 23%
HSV	358°, 45%, 29%
XYZ	4.0349, 3.2089, 2.5972
YIQ	50.9810, 19.3470, 7.3070

Conversions

Conversions Part 2

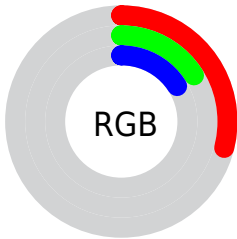
Format	Color
RYB	74, 41, 42
Decimal	4860202
CIELab	20.86, 15.53, 5.98
CIELCh	21, 16.646, 21.066
Yxy	3.2091, 0.4100, 0.3261
Android (android.graphics.Color)	4283050282 (0xFF4A292A)
YUV	50.9810, -4.4276, 20.1877
Hunter-Lab	17.9134, 8.8578, 3.9431

Details

The HunterLab color **17.9134, 8.8578, 3.9431** is a dark color, and the websafe version is hex **663333**. A complement of this color would be **24.1870, -8.6302, -0.6995**, and the grayscale version is **18.1986, -0.9710, 0.9888**.

A 20% lighter version of the original color is **34.3360, 9.7851, 5.7591**, and **5.3973, 9.2430, 3.4876** is the 20% darker color. If you saturate the color by 10%, you get **16.4244, 11.3117, 4.6278**, and if you desaturate by 10%, it is **19.5603, 6.4299, 3.2985**.

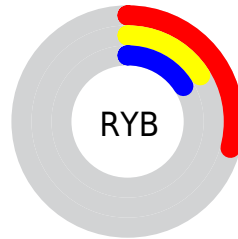
Distribution



Red (29%)

Green (16%)

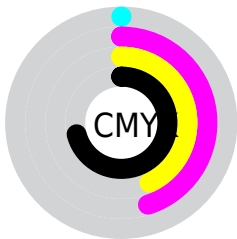
Blue (16%)



Red (29%)

Yellow (16%)

Blue (16%)

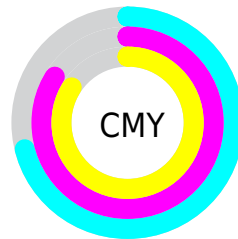


Cyan (0%)

Magenta (45%)

Yellow (43%)

Black (71%)



Cyan (71%)

Magenta (84%)

Yellow (84%)

Brightness & Saturation Gradients

These gradients show how the HunterLab color 17.9134, 8.8578, 3.9431 changes by changing the brightness by 10 percent. The first figure shows a shift by +10% for each color and the second figure -10%.

Similar to the brightness gradients but the following saturation gradients show a change of the HunterLab color 17.9134, 8.8578, 3.9431 by changing the saturation by 10% instead.

■ 17.9134, 8.8578,
3.9431

■ 17.9134, 8.8578,
3.9431

■ 114.3701, 10.9019,
12.1204

■ 11.1437, 8.0806,
3.0598

■ 34.3203, 9.9543,
5.6822

■ 3.0899, 21.7410,
2.1629

■ 43.7609, 10.3264,
6.5565

0.0000, NaN, NaN

0.0000, NaN, NaN

■ 53.9367, 10.6036,
7.4425

0.0000, NaN, NaN

■ 64.7979, 10.7978,
8.3432

0.0000, NaN, NaN

■ 76.3038, 10.9182,
9.2605

0.0000, NaN, NaN

0.0000, NaN, NaN

■ 88.4200, 10.9719,

101.1173, 10.9649,
11.1485

17.9134, 8.8578,
3.9431

17.9134, 8.8578,
3.9431

16.4244, 11.3117,
4.6278

19.5603, 6.4299,
3.2985

15.1189, 13.7235,
5.3342

21.3403, 4.0681,
2.7001

14.0255, 15.9790,
6.0304

23.2339, 1.7866,
2.1486

13.1695, 17.9266,
6.6692

25.2251, -0.4128,
1.6412

12.4745, 19.6805,
7.1961

27.3008, -2.5348,
1.1734

■ 12.0862, 20.7385,
7.4952

■ 29.4503, -4.5872,
0.7404

■ 31.6650, -6.5787,
0.3376

■ 33.9379, -8.5180,
-0.0392

■ 36.2631, -10.4128,
-0.3935

Harmonies

Analogous

The Analogous color harmony consists of three colors that are next to each other on the color wheel.



17.9138, 9.4898, -0.4942



17.9134, 8.8578, 3.9431



17.9138, 5.4499, 6.7011

Triad

The Triadic color harmony groups three colors that are evenly spaced from another and form a triangle on the color wheel.



17.9138, 8.8569, 3.9434



17.9138, -7.7981, 5.7971



17.9138, -2.4162, -10.5243

Complementary

The Complementary color scheme is a pair of colors which are on the opposite of each other on the color wheel.



17.9134, 8.8578, 3.9431



24.1870, -8.6302, -0.6995

Split Complementary

Split-complementary colors differ from the complementary color scheme. The scheme consists of three colors, the original color and two neighbors of the complement color.



17.9138, -6.5731, -7.6311



17.9134, 8.8578, 3.9431



17.9138, -9.4502, 2.3296

Square

The Square scheme is like the rectangle color scheme, but the four colors are evenly spaced on the color wheel.



17.9138, 8.8569, 3.9434



17.9138, -4.2626, 7.5510



17.9138, -9.0276, -2.6082



17.9138, 2.6076, -9.7457

Rectangle

The Rectangle color scheme consists of four colors that form a rectangle on the color wheel.



17.9134, 8.8578, 3.9431



17.9138, 2.2493, 7.6167



17.9138, -9.0276, -2.6082



17.9138, -3.9521, -9.9252

Sweetspot

The Sweet Spot groups the original color and five complimentary colors.



17.9138, 8.8569, 3.9434



30.9428, 2.0384, 2.7606



18.6896, 12.8421, -8.8110



15.3755, 1.2090, 1.4298



65.8695, -3.5146, 3.5788



17.3419, -0.9253, 0.9422

Same Dimension

The Same Dimension uses a secret algorithm to generate beautiful new colors.



17.9138, 8.8569, 3.9434



21.3982, 15.4201, 6.2486



21.1740, 2.2135, 7.2112



13.0537, 0.2579, 0.9871



16.8272, 28.8572, 10.5619



40.9336, 70.1372, 26.1622

Inverse Universe

The Inverse Universe completely reimagines the original color for something new.



17.9138, 8.8569, 3.9434



21.3982, 15.4201, 6.2486



20.1320, -2.4770, -6.7180



13.0537, 0.2579, 0.9871



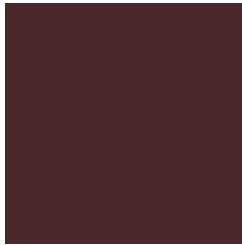
16.8272, 28.8572, 10.5619



40.9336, 70.1372, 26.1622

Previews

White Background



This preview shows how the HunterLab color 17.9134, 8.8578, 3.9431 looks on a white background.

Color Contrast Check

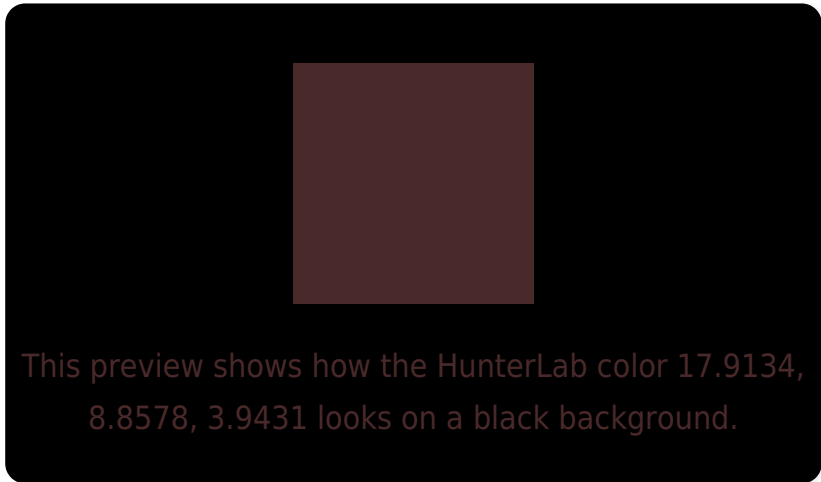
Large Text (above 18pt) WCAG AA ✓ Pass

Any Text WCAG AA ✓ Pass

Large Text (above 18pt) WCAG AAA ✓ Pass

Any Text WCAG AAA ✓ Pass

Black Background



Color Contrast Check

Large Text (above 18pt) WCAG AA × Fail

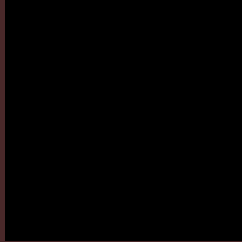
Any Text WCAG AA × Fail

Large Text (above 18pt) WCAG AAA × Fail

Any Text WCAG AAA × Fail

If you want to check with other color combinations, try the [Color Contrast Checker](#).

HunterLab 17.9134, 8.8578, 3.9431 Background



This preview shows how black text looks on a background with the HunterLab color 17.9134, 8.8578, 3.9431.

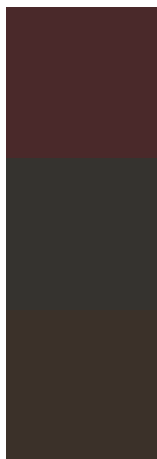


This preview shows how white text looks on a background with the HunterLab color 17.9134, 8.8578,

Color Blindness Simulation

Color vision deficiency is a very complex topic, and I could not describe the different causes any better than Wikipedia does, so if you want to learn more, you should check out their [article about color blindness](#).

Dichromacy



Original Color

17.9134, 8.8578, 3.9431

Protanopia

18.2477, -0.9720, 2.4890

Deuteranopia

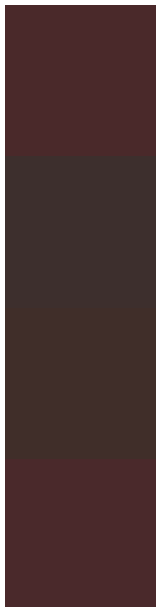
18.1288, 0.7887, 4.3238



Tritanopia

17.9543, 9.0594, 3.3531

Trichromacy



Original Color

17.9134, 8.8578, 3.9431

Protanomaly

17.9293, 2.6191, 2.8841

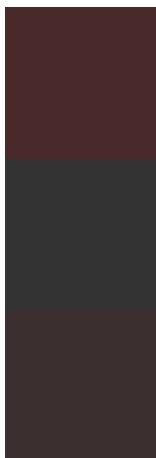
Deuteranomaly

17.8999, 3.4936, 4.1424

Tritanomaly

17.9336, 8.9575, 3.6514

Monochromacy



Original Color

17.9134, 8.8578, 3.9431

Achromatopsia

18.1947, -0.9708, 0.9886

Achromatomaly

17.8220, 2.4007, 1.7211

CSS Examples

Text

The CSS property to change the color of the text to HunterLab 17.9134, 8.8578, 3.9431 is called "color". The color property can be set on classes, ids or directly on the HTML element.

This example shows how text in the color `rgb(74, 41, 42)` looks like.

```
.text, #text, p{  
    color:rgb(74, 41, 42)  
}
```

If you want to add a text shadow in that color use the text-shadow property, you can generate a text shadow directly with our [CSS Text Shadow Generator](#).

Here you see how black text with a 4 pixel rgb(74, 41, 42) colored shadow looks like.

```
.shadow{ text-shadow: 4px 4px 2px rgb(74, 41, 42) }
```

Border

The CSS property to change the border of an element to HunterLab 17.9134, 8.8578, 3.9431 is called "border".

The border property can be set on classes, ids or directly on the HTML element.

This example shows the color as border, it can be applied via the CSS property "border" or "border-color".

```
.border, #border, table{ border:4px solid rgb(74, 41, 42) }
```


If only the border color should be changed use the property border-color.

```
.border{ border-color:rgb(74, 41, 42) }
```

If you want to add a box shadow in that color use:

Here you see how a box with a 4 pixel rgb(74, 41, 42) colored shadow looks like.

```
.boxshadow{ -moz-box-shadow:4px 4px 4px  
4px rgb(74, 41, 42); -webkit-box-  
shadow:4px 4px 4px 4px rgb(74, 41, 42);  
box-shadow:4px 4px 4px 4px rgb(74, 41, 42)  
}
```

Background

The CSS property to change the background color of an element to HunterLab 17.9134, 8.8578, 3.9431 is called "background". The background property can be set on classes, ids or directly on the HTML element.

```
.background, #background, body{  
background: rgb(74, 41, 42) }
```

If only the background color should be changed can be used:

```
.background{ background-color: rgb(74, 41,  
42) }
```

This example shows the color as background, it is applied via the CSS property "background".

To optimize and compress your CSS code, you can use our [online CSS compressor and optimizer](#) based on csstidy. If you want to create a linear or radial gradient as background or border, check our [CSS Gradient Generator](#).

Hey! You found this booklet interesting? Support Converting Colors with the new Membership Option!

The pro membership hides all ads, plus gives you double the colors in the color bucket, and more awesome pro features!

[Learn more, Memberships starting at \\$2.50/m!](#)

**Follow me
on Twitter!**

@ConvertingColor