

Converting Colors

HunterLab(18.0200, 9.6872,
2.3757)

Have a look what the booklet for
HunterLab(18.0200, 9.6872, 2.3757)
contains.

HunterLab(18.1300, 9.6995, 2.5466)	3
<i>Conversions</i>	4
<i>Details</i>	6
<i>Harmonies</i>	12
<i>Previews</i>	24
<i>Color Blindness Simulation</i>	28
<i>CSS Examples</i>	31

Color

**HunterLab(18.1300, 9.6995,
2.5466)**

Conversions

Conversions Part 1

Format	Color
Hex	4B292F
RGB	75, 41, 47
RGB Percent	29%, 16%, 18%
CMY	0.7059, 0.8392, 0.8157
CMYK	0.00, 0.45, 0.37, 0.71
HSL	349°, 29%, 23%
HSV	349°, 45%, 29%
XYZ	4.2077, 3.2870, 3.1020
YIQ	51.8500, 18.3380, 9.0740

Conversions

Conversions Part 2

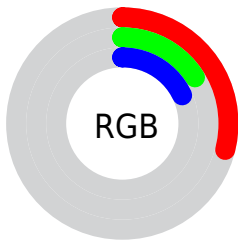
Format	Color
RYB	75, 41, 47
Decimal	4925743
CIELab	21.16, 16.71, 2.98
CIElCh	21, 16.975, 10.122
Yxy	3.2871, 0.3971, 0.3102
Android (android.graphics.Color)	4283115823 (0xFF4B292F)
YUV	51.8500, -2.3911, 20.3025
Hunter-Lab	18.1300, 9.6995, 2.5466

Details

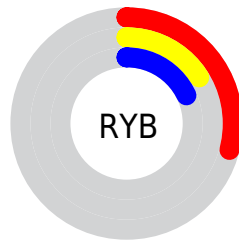
The HunterLab color **18.1300, 9.6995, 2.5466** is a dark color, and the websafe version is hex **663333**. A complement of this color would be **24.3584, -9.6153, 1.1361**, and the grayscale version is **18.4843, -0.9863, 1.0043**.

A 20% lighter version of the original color is **34.5929, 10.8845, 3.7571**, and **5.6862, 9.7379, 3.6743** is the 20% darker color. If you saturate the color by 10%, you get **16.6449, 12.2310, 3.0555**, and if you desaturate by 10%, it is **19.7731, 7.1575, 2.1457**.

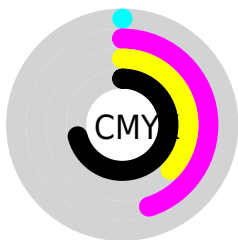
Distribution



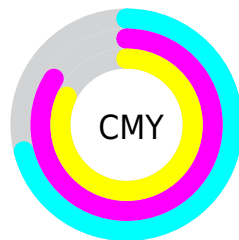
- Red (29%)
- Green (16%)
- Blue (18%)



- Red (29%)
- Yellow (16%)
- Blue (18%)



- Cyan (0%)
- Magenta (45%)
- Yellow (37%)
- Black (71%)



- Cyan (71%)
- Magenta (84%)
- Yellow (82%)

Brightness & Saturation Gradients

These gradients show how the HunterLab color 18.1300, 9.6995, 2.5466 changes by changing the brightness by 10 percent. The first figure shows a shift by +10% for each color and the second figure -10%.

Similar to the brightness gradients but the following saturation gradients show a change of the HunterLab color 18.1300, 9.6995, 2.5466 by changing the saturation by 10% instead.

■ 18.1300, 9.6995,
2.5466

■ 18.1300, 9.6995,
2.5466

■ 114.7714, 12.2282,
9.2309

■ 11.3288, 8.8565,
1.9273

■ 34.5891, 10.9214,
3.8498

■ 3.5820, 20.1370,
2.5074

■ 44.0523, 11.3517,
4.5398

0.0000, NaN, NaN

0.0000, NaN, NaN

■ 54.2491, 11.6845,
5.2565

0.0000, NaN, NaN

■ 65.1300, 11.9318,
5.9999

0.0000, NaN, NaN

■ 76.6544, 12.1030,
6.7695

0.0000, NaN, NaN

0.0000, NaN, NaN

■ 88.7883, 12.2056,

101.5024, 12.2457,
8.3856

18.1300, 9.6995,
2.5466

18.1300, 9.6995,
2.5466

16.6449, 12.2310,
3.0555

19.7731, 7.1575,
2.1457

15.3428, 14.6754,
3.6720

21.5497, 4.6531,
1.8433

14.2515, 16.9119,
4.3836

23.4406, 2.2071,
1.6283

13.3952, 18.7876,
5.1573

25.4297, -0.1732,
1.4886

12.6872, 20.4847,
5.8642

27.5040, -2.4888,
1.4134

■ 12.3512, 21.3919,
6.1195

■ 29.6528, -4.7446,
1.3931

■ 31.8674, -6.9473,
1.4193

■ 34.1407, -9.1040,
1.4854

■ 36.4669, -11.2215,
1.5856

Harmonies

Analogous

The Analogous color harmony consists of three colors that are next to each other on the color wheel.



18.1304, 9.1758, -2.4699



18.1300, 9.6995, 2.5466



18.1304, 7.1324, 6.0167

Triad

The Triadic color harmony groups three colors that are evenly spaced from another and form a triangle on the color wheel.



18.1304, 9.6986, 2.5470



18.1304, -6.8500, 6.7569



18.1304, -4.1753, -10.1230

Complementary

The Complementary color scheme is a pair of colors which are on the opposite of each other on the color wheel.



18.1300, 9.6995, 2.5466



24.3584, -9.6153, 1.1361

Split Complementary

Split-complementary colors differ from the complementary color scheme. The scheme consists of three colors, the original color and two neighbors of the complement color.



18.1304, -7.8570, -6.0902



18.1300, 9.6995, 2.5466



18.1304, -9.2793, 3.8737

Square

The Square scheme is like the rectangle color scheme, but the four colors are evenly spaced on the color wheel.



18.1304, 9.6986, 2.5470



18.1304, -2.6553, 7.9643



18.1304, -9.6264, -0.7254



18.1304, 0.7826, -10.7680

Rectangle

The Rectangle color scheme consists of four colors that form a rectangle on the color wheel.



18.1300, 9.6995, 2.5466



18.1304, 4.1652, 7.3423



18.1304, -9.6264, -0.7254



18.1304, -5.5875, -9.0750

Sweetspot

The Sweet Spot groups the original color and five complimentary colors.



18.1304, 9.6986, 2.5470



30.7264, 2.6183, 2.1018



18.3050, 11.8551, -10.0738



15.2846, 1.4933, 1.0682



65.8695, -3.5146, 3.5788



17.3419, -0.9253, 0.9422

Same Dimension

The Same Dimension uses a secret algorithm to generate beautiful new colors.



18.1304, 9.6986, 2.5470



21.5519, 16.1411, 4.0273



20.2270, 4.4876, 6.3925



13.0663, 0.3262, 0.8065



16.9365, 29.2620, 8.9458



41.1059, 70.7759, 23.6093

Inverse Universe

The Inverse Universe completely reimagines the original color for something new.



18.1304, 9.6986, 2.5470



21.5519, 16.1411, 4.0273



21.6165, -4.5411, -5.0174



13.0663, 0.3262, 0.8065



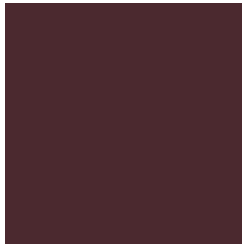
16.9365, 29.2620, 8.9458



41.1059, 70.7759, 23.6093

Previews

White Background



This preview shows how the HunterLab color 18.1300, 9.6995, 2.5466 looks on a white background.

Color Contrast Check

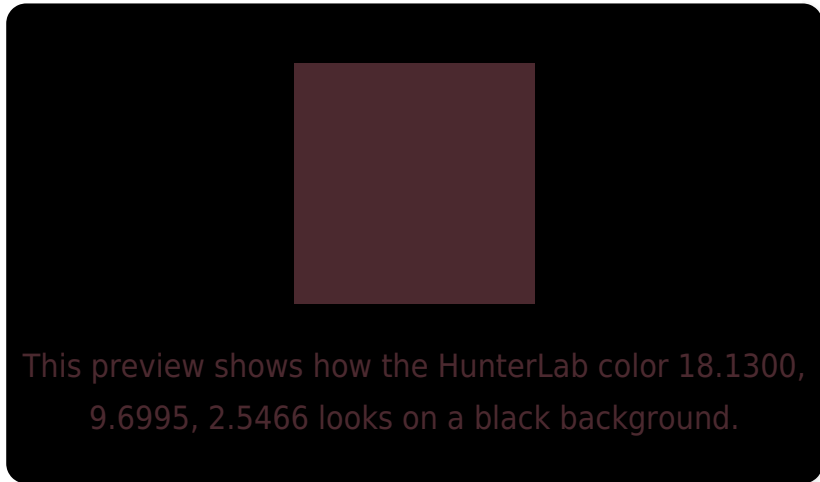
Large Text (above 18pt) WCAG AA ✓ Pass

Any Text WCAG AA ✓ Pass

Large Text (above 18pt) WCAG AAA ✓ Pass

Any Text WCAG AAA ✓ Pass

Black Background



Color Contrast Check

Large Text (above 18pt) WCAG AA × Fail

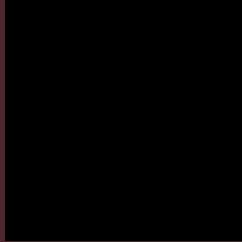
Any Text WCAG AA × Fail

Large Text (above 18pt) WCAG AAA × Fail

Any Text WCAG AAA × Fail

If you want to check with other color combinations, try the [Color Contrast Checker](#).

HunterLab 18.1300, 9.6995, 2.5466 Background



This preview shows how black text looks on a background with the HunterLab color 18.1300, 9.6995, 2.5466.



This preview shows how white text looks on a background with the HunterLab color 18.1300, 9.6995,

2.5466.

Color Blindness Simulation

Color vision deficiency is a very complex topic, and I could not describe the different causes any better than Wikipedia does, so if you want to learn more, you should check out their [article about color blindness](#).

Dichromacy



Original Color

18.1300, 9.6995, 2.5466

Protanopia

18.3160, -0.4520, 0.3754

Deuteranopia

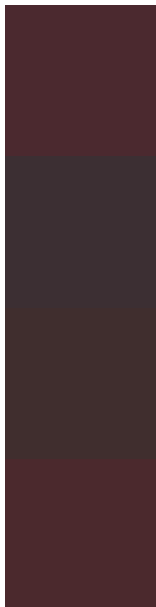
18.1478, 1.0577, 2.7565



Tritanopia

18.0654, 9.3830, 3.4756

Trichromacy



Original Color

18.1300, 9.6995, 2.5466

Protanomaly

17.9797, 3.0599, 0.8046

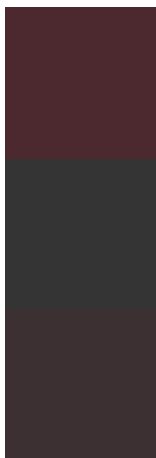
Deuteranomaly

18.0034, 4.0334, 2.6519

Tritanomaly

18.0864, 9.4862, 3.1725

Monochromacy



Original Color

18.1300, 9.6995, 2.5466

Achromatopsia

18.5310, -0.9888, 1.0068

Achromatomaly

18.1793, 2.5146, 1.4043

CSS Examples

Text

The CSS property to change the color of the text to HunterLab 18.1300, 9.6995, 2.5466 is called "color". The color property can be set on classes, ids or directly on the HTML element.

This example shows how text in the color `rgb(75, 41, 47)` looks like.

```
.text, #text, p{  
    color:rgb(75, 41, 47)  
}
```

If you want to add a text shadow in that color use the text-shadow property, you can generate a text shadow directly with our [CSS Text Shadow Generator](#).

Here you see how black text with a 4 pixel rgb(75, 41, 47) colored shadow looks like.

```
.shadow{ text-shadow: 4px 4px 2px rgb(75, 41, 47) }
```

Border

The CSS property to change the border of an element to HunterLab 18.1300, 9.6995, 2.5466 is called "border". The border property can be set on classes, ids or directly on the HTML element.

This example shows the color as border, it can be applied via the CSS property "border" or "border-color".

```
.border, #border, table{ border:4px solid rgb(75, 41, 47) }
```


If only the border color should be changed use the property border-color.

```
.border{ border-color:rgb(75, 41, 47) }
```

If you want to add a box shadow in that color use:

Here you see how a box with a 4 pixel rgb(75, 41, 47) colored shadow looks like.

```
.boxshadow{ -moz-box-shadow:4px 4px 4px  
4px rgb(75, 41, 47); -webkit-box-  
shadow:4px 4px 4px 4px rgb(75, 41, 47);  
box-shadow:4px 4px 4px 4px rgb(75, 41, 47)  
}
```

Background

The CSS property to change the background color of an element to HunterLab 18.1300, 9.6995, 2.5466 is called "background". The background property can be set on classes, ids or directly on the HTML element.

```
.background, #background, body{  
background: rgb(75, 41, 47) }
```

If only the background color should be changed can be used:

```
.background{ background-color: rgb(75, 41,  
47) }
```

This example shows the color as background, it is applied via the CSS property "background".

To optimize and compress your CSS code, you can use our [online CSS compressor and optimizer](#) based on csstidy. If you want to create a linear or radial gradient as background or border, check our [CSS Gradient Generator](#).

Hey! You found this booklet interesting? Support Converting Colors with the new Membership Option!

The pro membership hides all ads, plus gives you double the colors in the color bucket, and more awesome pro features!

[Learn more, Memberships starting at \\$2.50/m!](#)

**Follow me
on Twitter!**

@ConvertingColor