

Converting Colors

HunterLab(18.0230, 4.5330,
-0.7196)

Have a look what the booklet for
HunterLab(18.0230, 4.5330, -0.7196)
contains.

HunterLab(18.0387, 4.5819, -0.6844)	3
<i>Conversions</i>	4
<i>Details</i>	6
<i>Harmonies</i>	12
<i>Previews</i>	24
<i>Color Blindness Simulation</i>	28
<i>CSS Examples</i>	31

Color

**HunterLab(18.0387, 4.5819,
-0.6844)**

Conversions

Conversions Part 1

Format	Color
Hex	3E2E37
RGB	62, 46, 55
RGB Percent	24%, 18%, 22%
CMY	0.7569, 0.8196, 0.7843
CMYK	0.00, 0.26, 0.11, 0.76
HSL	326°, 15%, 21%
HSV	326°, 26%, 24%
XYZ	3.6532, 3.2539, 4.0500
YIQ	51.8100, 6.6470, 6.1910

Conversions

Conversions Part 2

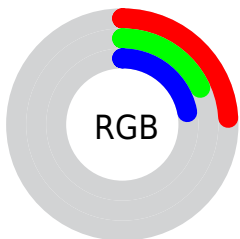
Format	Color
RYB	62, 46, 55
Decimal	4075063
CIELab	21.03, 9.11, -2.91
CIELCh	21, 9.564, 342.285
Yxy	3.2541, 0.3334, 0.2970
Android (android.graphics.Color)	4282265143 (0xFF3E2E37)
YUV	51.8100, 1.5727, 8.9366
Hunter-Lab	18.0387, 4.5819, -0.6844

Details

The HunterLab color **18.0387, 4.5819, -0.6844** is a dark color, and the websafe version is hex **333333**. A complement of this color would be **20.6959, -6.0992, 2.9963**, and the grayscale version is **18.4606, -0.9850, 1.0030**.

A 20% lighter version of the original color is **34.5378, 4.9673, -0.2102**, and **4.2848, 7.9017, -1.6025** is the 20% darker color. If you saturate the color by 10%, you get **16.6701, 6.8599, -1.2840**, and if you desaturate by 10%, it is **19.4955, 2.3243, -0.0042**.

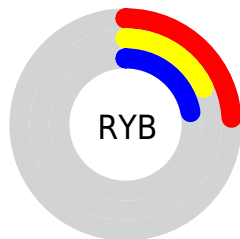
Distribution



Red (24%)

Green (18%)

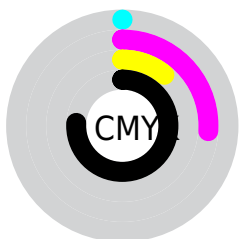
Blue (22%)



Red (24%)

Yellow (18%)

Blue (22%)

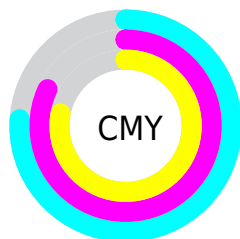


Cyan (0%)

Magenta (26%)

Yellow (11%)

Black (76%)



Cyan (76%)

Magenta (82%)

Yellow (78%)

Brightness & Saturation Gradients

These gradients show how the HunterLab color 18.0387, 4.5819, -0.6844 changes by changing the brightness by 10 percent. The first figure shows a shift by +10% for each color and the second figure -10%.

Similar to the brightness gradients but the following saturation gradients show a change of the HunterLab color 18.0387, 4.5819, -0.6844 by changing the saturation by 10% instead.

■ 18.0387, 4.5819,
-0.6844

■ 18.0387, 4.5819,
-0.6844

■ 114.6023, 3.7463,
3.2497

■ 11.2507, 4.2353,
-0.8347

■ 34.4758, 4.9054,
-0.1585

■ 3.3834, 11.5524,
-3.3812

■ 43.9295, 4.9282,
0.1946

0.0000, NaN, NaN

0.0000, NaN, NaN

■ 54.1174, 4.8763,
0.5986

0.0000, NaN, NaN

■ 64.9900, 4.7585,
1.0490

0.0000, NaN, NaN

■ 76.5067, 4.5818,
1.5420

0.0000, NaN, NaN

0.0000, NaN, NaN

■ 88.6331, 4.3514,

101.3401, 4.0717,
2.6446

18.0387, 4.5819,
-0.6844

18.0387, 4.5819,
-0.6844

16.6701, 6.8599,
-1.2840

19.4955, 2.3243,
-0.0042

15.4019, 9.1354,
-1.7816

21.0278, 0.1014,
0.7382

14.2502, 11.3648,
-2.1490

22.6265, -2.0827,
1.5300

13.2321, 13.4817,
-2.3537

24.2838, -4.2277,
2.3613

12.3652, 15.3936,
-2.3627

25.9931, -6.3359,
3.2247

■ 11.6613, 17.0000,
-2.1545

■ 27.7490, -8.4108,
4.1148

■ 10.9912, 18.6617,
-1.9091

■ 29.5469, -10.4564,
5.0273

■ 10.6992, 19.4499,
-1.8237

■ 31.3831, -12.4767,
5.9591

■ 33.2544, -14.4754,
6.9078

Harmonies

Analogous

The Analogous color harmony consists of three colors that are next to each other on the color wheel.



18.0391, 2.8888, -3.3342



18.0387, 4.5819, -0.6844



18.0391, 4.7323, 2.0602

Triad

The Triadic color harmony groups three colors that are evenly spaced from another and form a triangle on the color wheel.



18.0391, 4.5813, -0.6840



18.0391, -2.1191, 5.3832



18.0391, -4.8554, -2.9056

Complementary

The Complementary color scheme is a pair of colors which are on the opposite of each other on the color wheel.



18.0387, 4.5819, -0.6844



20.6959, -6.0992, 2.9963

Split Complementary

Split-complementary colors differ from the complementary color scheme. The scheme consists of three colors, the original color and two neighbors of the complement color.



18.0391, -6.0299, -0.1673



18.0387, 4.5819, -0.6844



18.0391, -4.5174, 4.4401

Square

The Square scheme is like the rectangle color scheme, but the four colors are evenly spaced on the color wheel.



18.0391, 4.5813, -0.6840



18.0391, 0.7411, 5.2892



18.0391, -5.9102, 2.5027



18.0391, -2.6070, -4.7479

Rectangle

The Rectangle color scheme consists of four colors that form a rectangle on the color wheel.



18.0387, 4.5819, -0.6844



18.0391, 3.9265, 3.5593



18.0391, -5.9102, 2.5027



18.0391, -5.3824, -2.0427

Sweetspot

The Sweet Spot groups the original color and five complimentary colors.



18.0391, 4.5813, -0.6840



27.1637, 0.8801, 0.7144



17.4843, 3.2080, -4.6246



13.8552, 0.5643, 0.3280



62.6995, -3.3455, 3.4066



14.8260, -0.7911, 0.8055

Same Dimension

The Same Dimension uses a secret algorithm to generate beautiful new colors.



18.0391, 4.5813, -0.6840



22.5451, 8.0217, -1.4383



17.8439, 3.5666, 2.0979



10.8812, 0.3570, 0.2848



16.2970, 29.4901, -1.7257



41.2081, 74.1498, -1.1213

Inverse Universe

The Inverse Universe completely reimagines the original color for something new.



18.0391, 4.5813, -0.6840



22.5451, 8.0217, -1.4383



20.8863, -5.0157, 0.2762



10.8812, 0.3570, 0.2848



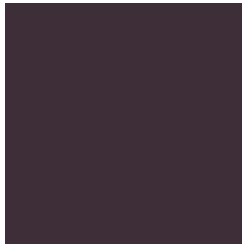
16.2970, 29.4901, -1.7257



41.2081, 74.1498, -1.1213

Previews

White Background



This preview shows how the HunterLab color 18.0387, 4.5819, -0.6844 looks on a white background.

Color Contrast Check

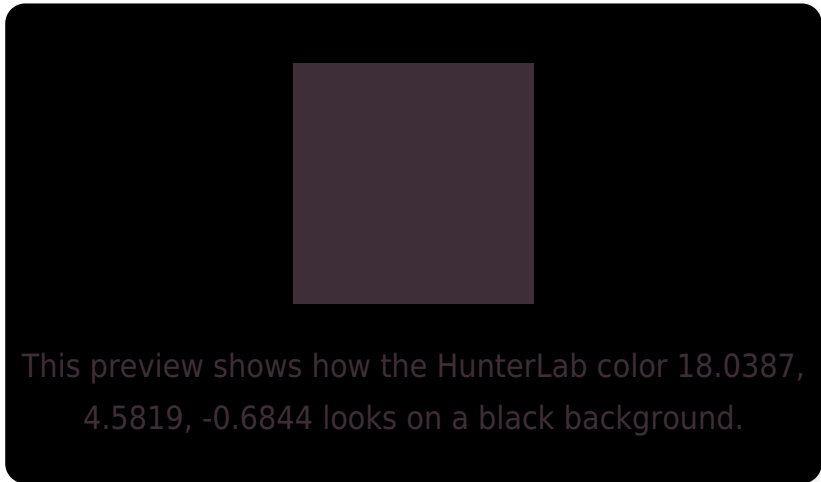
Large Text (above 18pt) WCAG AA ✓ Pass

Any Text WCAG AA ✓ Pass

Large Text (above 18pt) WCAG AAA ✓ Pass

Any Text WCAG AAA ✓ Pass

Black Background



Color Contrast Check

Large Text (above 18pt) WCAG AA × Fail

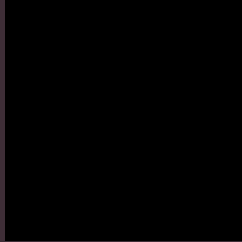
Any Text WCAG AA × Fail

Large Text (above 18pt) WCAG AAA × Fail

Any Text WCAG AAA × Fail

If you want to check with other color combinations, try the [Color Contrast Checker](#).

HunterLab 18.0387, 4.5819, -0.6844 Background



This preview shows how black text looks on a background with the HunterLab color 18.0387, 4.5819, -0.6844.



This preview shows how white text looks on a background with the HunterLab color 18.0387, 4.5819,

-0.6844.

Color Blindness Simulation

Color vision deficiency is a very complex topic, and I could not describe the different causes any better than Wikipedia does, so if you want to learn more, you should check out their [article about color blindness](#).

Dichromacy



Original Color

18.0387, 4.5819, -0.6844

Protanopia

18.0688, 0.1870, -1.9981

Deuteranopia

18.0201, 1.0096, -0.3614



Tritanopia

18.0428, 3.2165, 1.2581

Trichromacy



Original Color

18.0387, 4.5819, -0.6844

Protanomaly

18.1006, 1.4407, -1.5008

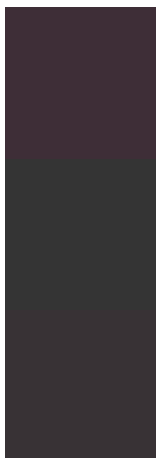
Deuteranomaly

18.0280, 2.2156, -0.3303

Tritanomaly

18.0916, 3.4723, 0.5617

Monochromacy



Original Color

18.0387, 4.5819, -0.6844

Achromatopsia

18.5310, -0.9888, 1.0068

Achromatomaly

18.3821, 0.9842, 0.4804

CSS Examples

Text

The CSS property to change the color of the text to HunterLab 18.0387, 4.5819, -0.6844 is called "color". The color property can be set on classes, ids or directly on the HTML element.

This example shows how text in the color `rgb(62, 46, 55)` looks like.

```
.text, #text, p{  
    color:rgb(62, 46, 55)  
}
```

If you want to add a text shadow in that color use the text-shadow property, you can generate a text shadow directly with our [CSS Text Shadow Generator](#).

Here you see how black text with a 4 pixel rgb(62, 46, 55) colored shadow looks like.

```
.shadow{ text-shadow: 4px 4px 2px rgb(62, 46, 55) }
```

Border

The CSS property to change the border of an element to HunterLab 18.0387, 4.5819, -0.6844 is called "border". The border property can be set on classes, ids or directly on the HTML element.

This example shows the color as border, it can be applied via the CSS property "border" or "border-color".

```
.border, #border, table{ border:4px solid rgb(62, 46, 55) }
```


If only the border color should be changed use the property `border-color`.

```
.border{ border-color:rgb(62, 46, 55) }
```

If you want to add a box shadow in that color use:

Here you see how a box with a 4 pixel `rgb(62, 46, 55)` colored shadow looks like.

```
.boxshadow{ -moz-box-shadow:4px 4px 4px  
4px rgb(62, 46, 55); -webkit-box-  
shadow:4px 4px 4px 4px rgb(62, 46, 55);  
box-shadow:4px 4px 4px 4px rgb(62, 46, 55)  
}
```

Background

The CSS property to change the background color of an element to HunterLab 18.0387, 4.5819, -0.6844 is called "background". The background property can be set on classes, ids or directly on the HTML element.

```
.background, #background, body{  
background: rgb(62, 46, 55) }
```

If only the background color should be changed can be used:

```
.background{ background-color: rgb(62, 46,  
55) }
```

This example shows the color as background, it is applied via the CSS property "background".

To optimize and compress your CSS code, you can use our [online CSS compressor and optimizer](#) based on csstidy. If you want to create a linear or radial gradient as background or border, check our [CSS Gradient Generator](#).

Hey! You found this booklet interesting? Support Converting Colors with the new Membership Option!

The pro membership hides all ads, plus gives you double the colors in the color bucket, and more awesome pro features!

[Learn more, Memberships starting at \\$2.50/m!](#)

**Follow me
on Twitter!**

@ConvertingColor