

Converting Colors

HunterLab(18.0327, 12.0128,
4.4245)

Have a look what the booklet for
HunterLab(18.0327, 12.0128,
4.4245) contains.

HunterLab(18.0327, 12.0128, 4.4245)	3
<i>Conversions</i>	4
<i>Details</i>	6
<i>Harmonies</i>	12
<i>Previews</i>	24
<i>Color Blindness Simulation</i>	28
<i>CSS Examples</i>	31

Color

**HunterLab(18.0327, 12.0128,
4.4245)**

Conversions

Conversions Part 1

Format	Color
Hex	502629
RGB	80, 38, 41
RGB Percent	31%, 15%, 16%
CMY	0.6863, 0.8510, 0.8392
CMYK	0.00, 0.52, 0.49, 0.69
HSL	356°, 36%, 23%
HSV	356°, 52%, 31%
XYZ	4.4016, 3.2518, 2.4935
YIQ	50.9000, 24.0690, 9.8370

Conversions

Conversions Part 2

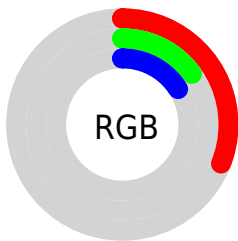
Format	Color
R_{YB}	80, 38, 41
Decimal	5252649
CIE _{Lab}	21.03, 19.96, 7.04
CIE _{LCh}	21, 21.166, 19.433
Yxy	3.2519, 0.4338, 0.3205
Android (android.graphics.Color)	4283442729 (0xFF502629)
YUV	50.9000, -4.8807, 25.5207
Hunter-Lab	18.0327, 12.0128, 4.4245

Details

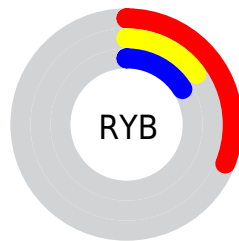
The HunterLab color **18.0327, 12.0128, 4.4245** is a dark color, and the websafe version is hex **663333**. A complement of this color would be **25.8558, -10.6764, -0.3557**, and the grayscale version is **18.1717, -0.9696, 0.9873**.

A 20% lighter version of the original color is **34.4061, 13.5117, 6.2659**, and **6.1243, 10.4880, 3.9574** is the 20% darker color. If you saturate the color by 10%, you get **16.5746, 14.6665, 5.1716**, and if you desaturate by 10%, it is **19.6891, 9.3120, 3.7343**.

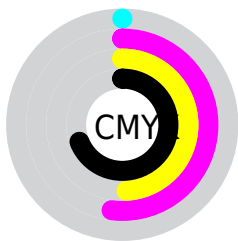
Distribution



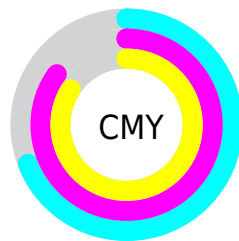
- Red (31%)
- Green (15%)
- Blue (16%)



- Red (31%)
- Yellow (15%)
- Blue (16%)



- Cyan (0%)
- Magenta (52%)
- Yellow (49%)
- Black (69%)



- Cyan (69%)
- Magenta (85%)
- Yellow (84%)

Brightness & Saturation Gradients

These gradients show how the HunterLab color 18.0327, 12.0128, 4.4245 changes by changing the brightness by 10 percent. The first figure shows a shift by +10% for each color and the second figure -10%.

Similar to the brightness gradients but the following saturation gradients show a change of the HunterLab color 18.0327, 12.0128, 4.4245 by changing the saturation by 10% instead.

■ 18.0327, 12.0128,
4.4245

■ 18.0327, 12.0128,
4.4245

■ 114.5913, 15.9264,
13.1464

■ 11.2456, 10.9832,
3.4604

■ 34.4684, 13.5934,
6.3231

■ 3.3701, 25.6282,
2.3591

■ 43.9215, 14.1906,
7.2648

0.0000, NaN, NaN

0.0000, NaN, NaN

■ 54.1089, 14.6823,
8.2126

0.0000, NaN, NaN

■ 64.9809, 15.0814,
9.1707

0.0000, NaN, NaN

■ 76.4971, 15.3978,
10.1417

0.0000, NaN, NaN

0.0000, NaN, NaN

■ 88.6230, 15.6399,

11.1273

0.0000, NaN, NaN

101.3296, 15.8143,
12.1286

18.0327, 12.0128,
4.4245

18.0327, 12.0128,
4.4245

16.5746, 14.6665,
5.1716

19.6891, 9.3120,
3.7343

15.3447, 17.1561,
5.9472

21.5132, 6.6415,
3.1114

14.3724, 19.3160,
6.7054

23.4799, 4.0388,
2.5577

13.6404, 21.0864,
7.3602

25.5683, 1.5191,
2.0688

13.1072, 22.5419,
7.7294

27.7610, -0.9160,
1.6381

■ 30.0441, -3.2716,
1.2585

■ 32.4063, -5.5560,
0.9231

■ 34.8384, -7.7783,
0.6255

■ 37.3330, -9.9474,
0.3605

Harmonies

Analogous

The Analogous color harmony consists of three colors that are next to each other on the color wheel.



18.0332, 12.6311, -1.2737



18.0327, 12.0128, 4.4245



18.0332, 7.6557, 7.7485

Triad

The Triadic color harmony groups three colors that are evenly spaced from another and form a triangle on the color wheel.



18.0332, 12.0117, 4.4248



18.0332, -9.3099, 7.0052



18.0332, -3.1416, -14.5150

Complementary

The Complementary color scheme is a pair of colors which are on the opposite of each other on the color wheel.



18.0327, 12.0128, 4.4245



25.8558, -10.6764, -0.3557

Split Complementary

Split-complementary colors differ from the complementary color scheme. The scheme consists of three colors, the original color and two neighbors of the complement color.



18.0332, -8.2164, -10.2164



18.0327, 12.0128, 4.4245



18.0332, -11.4372, 2.9786

Square

The Square scheme is like the rectangle color scheme, but the four colors are evenly spaced on the color wheel.



18.0332, 12.0117, 4.4248



18.0332, -4.8370, 8.8431



18.0332, -11.0666, -3.3116



18.0332, 3.2681, -13.7086

Rectangle

The Rectangle color scheme consists of four colors that form a rectangle on the color wheel.



18.0327, 12.0128, 4.4245



18.0332, 3.5155, 8.8059



18.0332, -11.0666, -3.3116



18.0332, -5.0434, -13.5737

Sweetspot

The Sweet Spot groups the original color and five complimentary colors.



18.0332, 12.0117, 4.4248



32.6311, 3.3525, 2.9868



18.7687, 16.2436, -12.1251



16.4611, 1.8962, 1.5576



67.9972, -3.6282, 3.6944



19.0543, -1.0167, 1.0353

Same Dimension

The Same Dimension uses a secret algorithm to generate beautiful new colors.



18.0332, 12.0117, 4.4248



21.4095, 20.3224, 7.1158



21.5074, 4.2600, 8.2716



13.8085, 0.3121, 0.9950



17.2987, 29.7190, 10.4451



41.4769, 71.1247, 26.0702

Inverse Universe

The Inverse Universe completely reimagines the original color for something new.



18.0332, 12.0117, 4.4248



21.4095, 20.3224, 7.1158



21.1926, -3.4183, -8.2336



13.8085, 0.3121, 0.9950



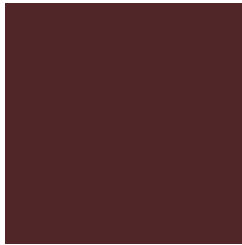
17.2987, 29.7190, 10.4451



41.4769, 71.1247, 26.0702

Previews

White Background



This preview shows how the HunterLab color 18.0327, 12.0128, 4.4245 looks on a white background.

Color Contrast Check

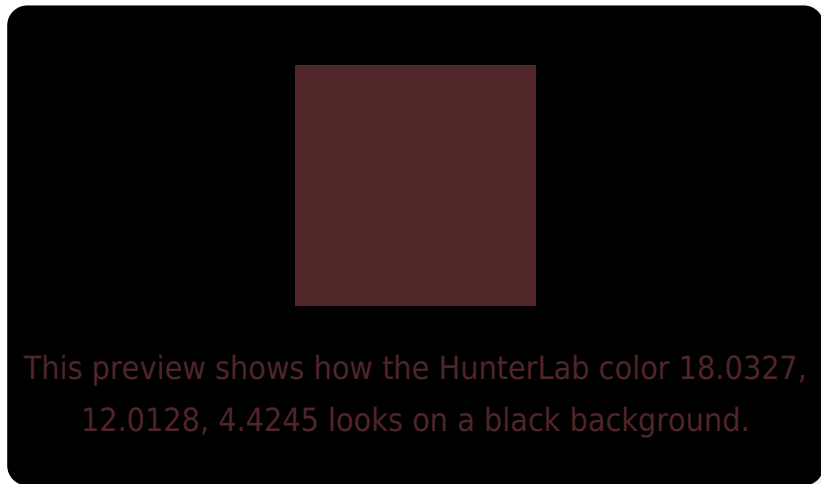
Large Text (above 18pt) WCAG AA ✓ Pass

Any Text WCAG AA ✓ Pass

Large Text (above 18pt) WCAG AAA ✓ Pass

Any Text WCAG AAA ✓ Pass

Black Background



Color Contrast Check

Large Text (above 18pt) WCAG AA × Fail

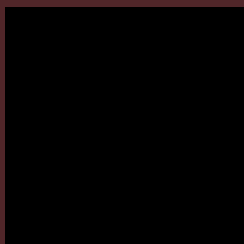
Any Text WCAG AA × Fail

Large Text (above 18pt) WCAG AAA × Fail

Any Text WCAG AAA × Fail

If you want to check with other color combinations, try the [Color Contrast Checker](#).

HunterLab 18.0327, 12.0128, 4.4245 Background



This preview shows how black text looks on a background with the HunterLab color 18.0327, 12.0128, 4.4245.



This preview shows how white text looks on a background with the HunterLab color 18.0327, 12.0128,

Color Blindness Simulation

Color vision deficiency is a very complex topic, and I could not describe the different causes any better than Wikipedia does, so if you want to learn more, you should check out their [article about color blindness](#).

Dichromacy



Original Color

18.0327, 12.0128, 4.4245

Protanopia

18.2477, -0.9720, 2.4890

Deuteranopia

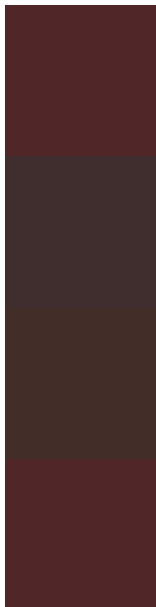
18.1763, 0.8741, 4.9543



Tritanopia

18.0327, 12.0128, 4.4245

Trichromacy



Original Color

18.0327, 12.0128, 4.4245

Protanomaly

17.8891, 3.6229, 2.8585

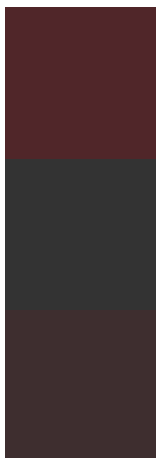
Deuteranomaly

17.9535, 4.7332, 4.5161

Tritanomaly

18.0327, 12.0128, 4.4245

Monochromacy



Original Color

18.0327, 12.0128, 4.4245

Achromatopsia

18.1947, -0.9708, 0.9886

Achromatomaly

17.8420, 3.5591, 2.1197

CSS Examples

Text

The CSS property to change the color of the text to HunterLab 18.0327, 12.0128, 4.4245 is called "color". The color property can be set on classes, ids or directly on the HTML element.

This example shows how text in the color `rgb(80, 38, 41)` looks like.

```
.text, #text, p{  
    color:rgb(80, 38, 41)  
}
```

If you want to add a text shadow in that color use the text-shadow property, you can generate a text shadow directly with our [CSS Text Shadow Generator](#).

Here you see how black text with a 4 pixel rgb(80, 38, 41) colored shadow looks like.

```
.shadow{ text-shadow: 4px 4px 2px rgb(80, 38, 41) }
```

Border

The CSS property to change the border of an element to HunterLab 18.0327, 12.0128, 4.4245 is called "border". The border property can be set on classes, ids or directly on the HTML element.

This example shows the color as border, it can be applied via the CSS property "border" or "border-color".

```
.border, #border, table{ border:4px solid rgb(80, 38, 41) }
```


If only the border color should be changed use the property `border-color`.

```
.border{ border-color:rgb(80, 38, 41) }
```

If you want to add a box shadow in that color use:

Here you see how a box with a 4 pixel `rgb(80, 38, 41)` colored shadow looks like.

```
.boxshadow{ -moz-box-shadow:4px 4px 4px  
4px rgb(80, 38, 41); -webkit-box-  
shadow:4px 4px 4px 4px rgb(80, 38, 41);  
box-shadow:4px 4px 4px 4px rgb(80, 38, 41)  
}
```

Background

The CSS property to change the background color of an element to HunterLab 18.0327, 12.0128, 4.4245 is called "background". The background property can be set on classes, ids or directly on the HTML element.

```
.background, #background, body{  
background: rgb(80, 38, 41) }
```

If only the background color should be changed can be used:

```
.background{ background-color: rgb(80, 38,  
41) }
```

This example shows the color as background, it is applied via the CSS property "background".

To optimize and compress your CSS code, you can use our [online CSS compressor and optimizer](#) based on csstidy. If you want to create a linear or radial gradient as background or border, check our [CSS Gradient Generator](#).

Hey! You found this booklet interesting? Support Converting Colors with the new Membership Option!

The pro membership hides all ads, plus gives you double the colors in the color bucket, and more awesome pro features!

[Learn more, Memberships starting at \\$2.50/m!](#)

**Follow me
on Twitter!**

@ConvertingColor