

Converting Colors

HunterLab(18.0841, 11.5113,
4.0328)

Have a look what the booklet for
HunterLab(18.0841, 11.5113,
4.0328) contains.

HunterLab(18.1121, 11.3507, 4.1887)	3
<i>Conversions</i>	4
<i>Details</i>	6
<i>Harmonies</i>	12
<i>Previews</i>	24
<i>Color Blindness Simulation</i>	28
<i>CSS Examples</i>	31

Color

**HunterLab(18.1121, 11.3507,
4.1887)**

Conversions

Conversions Part 1

Format	Color
Hex	4F272A
RGB	79, 39, 42
RGB Percent	31%, 15%, 16%
CMY	0.6902, 0.8470, 0.8353
CMYK	0.00, 0.51, 0.47, 0.69
HSL	356°, 34%, 23%
HSV	356°, 51%, 31%
XYZ	4.3679, 3.2805, 2.5935
YIQ	51.3020, 22.8770, 9.4130

Conversions

Conversions Part 2

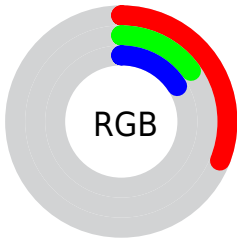
Format	Color
R_{YB}	79, 39, 42
Decimal	5187370
CIE _{Lab}	21.13, 19.03, 6.48
CIE _{LCh}	21, 20.106, 18.802
Yxy	3.2806, 0.4265, 0.3203
Android (android.graphics.Color)	4283377450 (0xFF4F272A)
YUV	51.3020, -4.5859, 24.2911
Hunter-Lab	18.1121, 11.3507, 4.1887

Details

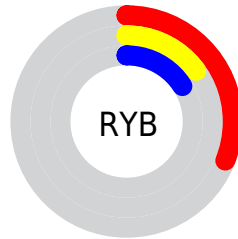
The HunterLab color **18.1121, 11.3507, 4.1887** is a dark color, and the websafe version is hex **663333**. A complement of this color would be **25.5835, -10.3225, -0.2631**, and the grayscale version is **18.3061, -0.9768, 0.9946**.

A 20% lighter version of the original color is **34.5412, 12.8042, 6.0309**, and **5.9777, 10.2369, 3.8626** is the 20% darker color. If you saturate the color by 10%, you get **16.6347, 13.9826, 4.9124**, and if you desaturate by 10%, it is **19.7785, 8.6893, 3.5264**.

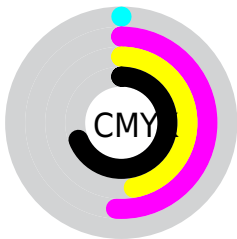
Distribution



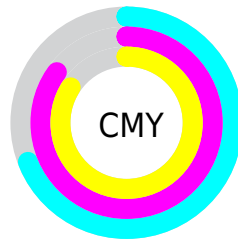
- Red (31%)
- Green (15%)
- Blue (16%)



- Red (31%)
- Yellow (15%)
- Blue (16%)



- Cyan (0%)
- Magenta (51%)
- Yellow (47%)
- Black (69%)



- Cyan (69%)
- Magenta (85%)
- Yellow (84%)

Brightness & Saturation Gradients

These gradients show how the HunterLab color 18.1121, 11.3507, 4.1887 changes by changing the brightness by 10 percent. The first figure shows a shift by +10% for each color and the second figure -10%.

Similar to the brightness gradients but the following saturation gradients show a change of the HunterLab color 18.1121, 11.3507, 4.1887 by changing the saturation by 10% instead.

■ 18.1121, 11.3507,
4.1887

■ 18.1121, 11.3507,
4.1887

■ 114.7383, 14.8672,
12.6224

■ 11.3135, 10.3737,
3.2599

■ 34.5669, 12.8288,
6.0020

■ 3.5440, 23.2121,
2.4808

■ 44.0283, 13.3782,
6.9080

0.0000, NaN, NaN

0.0000, NaN, NaN

■ 54.2233, 13.8243,
7.8231

0.0000, NaN, NaN

■ 65.1026, 14.1797,
8.7510

0.0000, NaN, NaN

■ 76.6255, 14.4545,
9.6937

0.0000, NaN, NaN

0.0000, NaN, NaN

■ 88.7579, 14.6566,

101.4706, 14.7923,
11.6287

18.1121, 11.3507,
4.1887

18.1121, 11.3507,
4.1887

16.6347, 13.9826,
4.9124

19.7785, 8.6893,
3.5264

15.3755, 16.4794,
5.6738

21.6045, 6.0666,
2.9329

14.3642, 18.6858,
6.4317

23.5664, 3.5141,
2.4082

13.6067, 20.4758,
7.1175

25.6443, 1.0438,
1.9472

12.9431, 22.2657,
7.5864

27.8219, -1.3443,
1.5429

■ 30.0861, -3.6559,
1.1882

■ 32.4264, -5.8995,
0.8762

■ 34.8339, -8.0839,
0.6009

■ 37.3017, -10.2177,
0.3570

Harmonies

Analogous

The Analogous color harmony consists of three colors that are next to each other on the color wheel.



18.1126, 11.8492, -1.2864



18.1121, 11.3507, 4.1887



18.1126, 7.3082, 7.4703

Triad

The Triadic color harmony groups three colors that are evenly spaced from another and form a triangle on the color wheel.



18.1126, 11.3496, 4.1890



18.1126, -8.8830, 6.8442



18.1126, -3.1618, -13.4905

Complementary

The Complementary color scheme is a pair of colors which are on the opposite of each other on the color wheel.



18.1121, 11.3507, 4.1887



25.5835, -10.3225, -0.2631

Split Complementary

Split-complementary colors differ from the complementary color scheme. The scheme consists of three colors, the original color and two neighbors of the complement color.



18.1126, -7.9810, -9.4154



18.1121, 11.3507, 4.1887



18.1126, -10.9846, 2.9973

Square

The Square scheme is like the rectangle color scheme, but the four colors are evenly spaced on the color wheel.



18.1126, 11.3496, 4.1890



18.1126, -4.5505, 8.6210



18.1126, -10.6775, -2.9359



18.1126, 2.9179, -12.8489

Rectangle

The Rectangle color scheme consists of four colors that form a rectangle on the color wheel.



18.1121, 11.3507, 4.1887



18.1126, 3.4128, 8.5427



18.1126, -10.6775, -2.9359



18.1126, -4.9673, -12.5847

Sweetspot

The Sweet Spot groups the original color and five complimentary colors.



18.1126, 11.3496, 4.1890



32.0854, 2.9245, 2.8229



18.8112, 15.3888, -11.4538



15.8677, 1.6362, 1.4421



66.9319, -3.5713, 3.6365



18.1947, -0.9708, 0.9886

Same Dimension

The Same Dimension uses a secret algorithm to generate beautiful new colors.



18.1126, 11.3496, 4.1890



21.2433, 19.0707, 6.6507



21.4594, 3.9435, 7.9883



13.0575, 0.2787, 0.9322



16.8569, 28.9673, 10.1221



40.9652, 70.2545, 25.6930

Inverse Universe

The Inverse Universe completely reimagines the original color for something new.



18.1126, 11.3496, 4.1890



21.2433, 19.0707, 6.6507



21.1604, -3.3817, -7.7465



13.0575, 0.2787, 0.9322



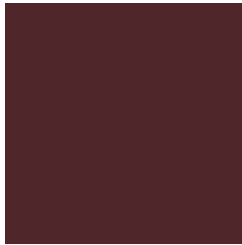
16.8569, 28.9673, 10.1221



40.9652, 70.2545, 25.6930

Previews

White Background



This preview shows how the HunterLab color 18.1121, 11.3507, 4.1887 looks on a white background.

Color Contrast Check

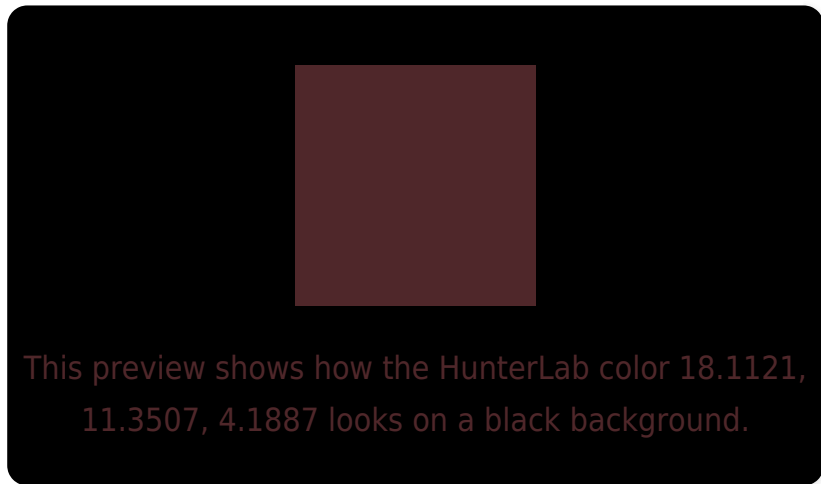
Large Text (above 18pt) WCAG AA ✓ Pass

Any Text WCAG AA ✓ Pass

Large Text (above 18pt) WCAG AAA ✓ Pass

Any Text WCAG AAA ✓ Pass

Black Background



Color Contrast Check

Large Text (above 18pt) WCAG AA × Fail

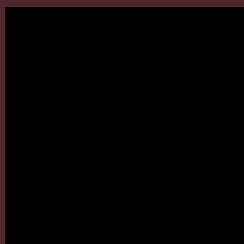
Any Text WCAG AA × Fail

Large Text (above 18pt) WCAG AAA × Fail

Any Text WCAG AAA × Fail

If you want to check with other color combinations, try the [Color Contrast Checker](#).

HunterLab 18.1121, 11.3507, 4.1887 Background



This preview shows how black text looks on a background with the HunterLab color 18.1121, 11.3507, 4.1887.



This preview shows how white text looks on a background with the HunterLab color 18.1121, 11.3507,

Color Blindness Simulation

Color vision deficiency is a very complex topic, and I could not describe the different causes any better than Wikipedia does, so if you want to learn more, you should check out their [article about color blindness](#).

Dichromacy



Original Color

18.1121, 11.3507, 4.1887

Protanopia

18.2700, -0.8496, 2.1684

Deuteranopia

18.1947, 0.9734, 4.6869



Tritanopia

18.1121, 11.3507, 4.1887

Trichromacy



Original Color

18.1121, 11.3507, 4.1887

Protanomaly

18.0400, 3.0244, 2.6741

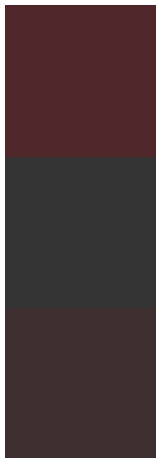
Deuteranomaly

17.9726, 4.8322, 4.2387

Tritanomaly

18.1121, 11.3507, 4.1887

Monochromacy



Original Color

18.1121, 11.3507, 4.1887

Achromatopsia

18.1947, -0.9708, 0.9886

Achromatomaly

17.9959, 2.9703, 1.9282

CSS Examples

Text

The CSS property to change the color of the text to HunterLab 18.1121, 11.3507, 4.1887 is called "color". The color property can be set on classes, ids or directly on the HTML element.

This example shows how text in the color `rgb(79, 39, 42)` looks like.

```
.text, #text, p{  
    color:rgb(79, 39, 42)  
}
```

If you want to add a text shadow in that color use the text-shadow property, you can generate a text shadow directly with our [CSS Text Shadow Generator](#).

Here you see how black text with a 4 pixel rgb(79, 39, 42) colored shadow looks like.

```
.shadow{ text-shadow: 4px 4px 2px rgb(79, 39, 42) }
```

Border

The CSS property to change the border of an element to HunterLab 18.1121, 11.3507, 4.1887 is called "border". The border property can be set on classes, ids or directly on the HTML element.

This example shows the color as border, it can be applied via the CSS property "border" or "border-color".

```
.border, #border, table{ border:4px solid rgb(79, 39, 42) }
```


If only the border color should be changed use the property `border-color`.

```
.border{ border-color:rgb(79, 39, 42) }
```

If you want to add a box shadow in that color use:

Here you see how a box with a 4 pixel `rgb(79, 39, 42)` colored shadow looks like.

```
.boxshadow{ -moz-box-shadow:4px 4px 4px  
4px rgb(79, 39, 42); -webkit-box-  
shadow:4px 4px 4px 4px rgb(79, 39, 42);  
box-shadow:4px 4px 4px 4px rgb(79, 39, 42)  
}
```

Background

The CSS property to change the background color of an element to HunterLab 18.1121, 11.3507, 4.1887 is called "background". The background property can be set on classes, ids or directly on the HTML element.

```
.background, #background, body{  
background: rgb(79, 39, 42) }
```

If only the background color should be changed can be used:

```
.background{ background-color: rgb(79, 39,  
42) }
```

This example shows the color as background, it is applied via the CSS property "background".

To optimize and compress your CSS code, you can use our [online CSS compressor and optimizer](#) based on csstidy. If you want to create a linear or radial gradient as background or border, check our [CSS Gradient Generator](#).

Hey! You found this booklet interesting? Support Converting Colors with the new Membership Option!

The pro membership hides all ads, plus gives you double the colors in the color bucket, and more awesome pro features!

[Learn more, Memberships starting at \\$2.50/m!](#)

**Follow me
on Twitter!**

@ConvertingColor