

Converting Colors

HunterLab(18.1845, 3.0437,
6.3242)

Have a look what the booklet for
HunterLab(18.1845, 3.0437, 6.3242)
contains.

HunterLab(18.1845, 3.0437, 6.3242)	3
<i>Conversions</i>	4
<i>Details</i>	6
<i>Harmonies</i>	12
<i>Previews</i>	24
<i>Color Blindness Simulation</i>	28
<i>CSS Examples</i>	31

Color

**HunterLab(18.1845, 3.0437,
6.3242)**

Conversions

Conversions Part 1

Format	Color
Hex	422F22
RGB	66, 47, 34
RGB Percent	26%, 18%, 13%
CMY	0.7412, 0.8157, 0.8667
CMYK	0.00, 0.29, 0.48, 0.74
HSL	24°, 32%, 20%
HSV	24°, 48%, 26%
XYZ	3.5520, 3.3068, 1.9644
YIQ	51.1990, 15.4970, -0.0150

Conversions

Conversions Part 2

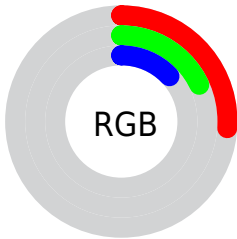
Format	Color
R_{YB}	66, 56, 34
Decimal	4337442
CIE _{Lab}	21.23, 6.68, 11.74
CIE _{LCh}	21, 13.506, 60.365
Yxy	3.3069, 0.4026, 0.3748
Android (android.graphics.Color)	4282527522 (0xFF422F22)
YUV	51.1990, -8.4791, 12.9805
Hunter-Lab	18.1845, 3.0437, 6.3242

Details

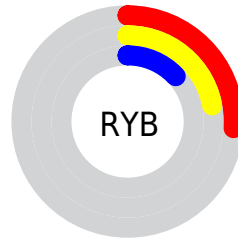
The HunterLab color **18.1845, 3.0437, 6.3242** is a dark color, and the websafe version is hex **333333**. A complement of this color would be **18.1093, -2.9481, -5.7676**, and the grayscale version is **18.2858, -0.9757, 0.9935**.

A 20% lighter version of the original color is **34.6751, 2.9440, 9.0938**, and **3.9929, 6.8379, 2.5801** is the 20% darker color. If you saturate the color by 10%, you get **17.2426, 4.1552, 7.0480**, and if you desaturate by 10%, it is **19.1736, 2.0130, 5.4753**.

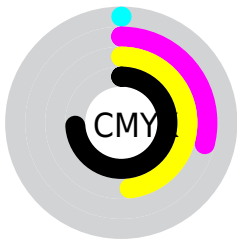
Distribution



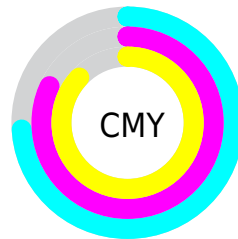
- Red (26%)
- Green (18%)
- Blue (13%)



- Red (26%)
- Yellow (22%)
- Blue (13%)



- Cyan (0%)
- Magenta (29%)
- Yellow (48%)
- Black (74%)



- Cyan (74%)
- Magenta (82%)
- Yellow (87%)

Brightness & Saturation Gradients

These gradients show how the HunterLab color 18.1845, 3.0437, 6.3242 changes by changing the brightness by 10 percent. The first figure shows a shift by +10% for each color and the second figure -10%.

Similar to the brightness gradients but the following saturation gradients show a change of the HunterLab color 18.1845, 3.0437, 6.3242 by changing the saturation by 10% instead.

■ 18.1845, 3.0437,
6.3242

■ 18.1845, 3.0437,
6.3242

■ 114.8721, 1.0717,
17.5329

■ 11.3754, 2.8775,
5.1831

■ 34.6567, 3.0548,
8.9593

■ 3.6952, 7.6783,
2.5866

■ 44.1256, 2.9392,
10.2097

0.0000, NaN, NaN

0.0000, NaN, NaN

■ 54.3276, 2.7577,
11.4395

0.0000, NaN, NaN

■ 65.2134, 2.5178,
12.6586

0.0000, NaN, NaN

■ 76.7425, 2.2251,
13.8735

0.0000, NaN, NaN

0.0000, NaN, NaN

■ 88.8808, 1.8842,

15.0888

0.0000, NaN, NaN

101.5991, 1.4988,
16.3078

18.1845, 3.0437,
6.3242

18.1845, 3.0437,
6.3242

17.2426, 4.1552,
7.0480

19.1736, 2.0130,
5.4753

16.3510, 5.3501,
7.6315

20.2044, 1.0628,
4.5143

15.5149, 6.6242,
8.0611

21.2737, 0.1883,
3.4537

14.7381, 7.9630,
8.3429

22.3783, -0.6153,
2.3048

14.0115, 9.2857,
8.6748

23.5152, -1.3533,
1.0774

■ 13.9057, 9.4822,
8.7347

■ 24.6819, -2.0309,
-0.2202

■ 25.8759, -2.6531,
-1.5806

■ 27.0954, -3.2247,
-2.9975

■ 28.3384, -3.7502,
-4.4655

Harmonies

Analogous

The Analogous color harmony consists of three colors that are next to each other on the color wheel.



18.1849, 6.2495, 4.3513



18.1845, 3.0437, 6.3242



18.1849, -1.0209, 6.9500

Triad

The Triadic color harmony groups three colors that are evenly spaced from another and form a triangle on the color wheel.



18.1849, 3.0429, 6.3244



18.1849, -8.1234, 0.9426



18.1849, 3.1362, -6.6344

Complementary

The Complementary color scheme is a pair of colors which are on the opposite of each other on the color wheel.



18.1845, 3.0437, 6.3242



18.1093, -2.9481, -5.7676

Split Complementary

Split-complementary colors differ from the complementary color scheme. The scheme consists of three colors, the original color and two neighbors of the complement color.



18.1849, -0.9216, -8.0882



18.1845, 3.0437, 6.3242



18.1849, -7.2160, -3.1684

Square

The Square scheme is like the rectangle color scheme, but the four colors are evenly spaced on the color wheel.



18.1849, 3.0429, 6.3244



18.1849, -7.2586, 4.2859



18.1849, -4.6649, -6.7004



18.1849, 6.3066, -3.0685

Rectangle

The Rectangle color scheme consists of four colors that form a rectangle on the color wheel.



18.1845, 3.0437, 6.3242



18.1849, -3.6034, 6.6565



18.1849, -4.6649, -6.7004



18.1849, 1.8196, -7.4172

Sweetspot

The Sweet Spot groups the original color and five complimentary colors.



18.1849, 3.0429, 6.3244



28.4448, -0.0606, 4.1347



16.0038, 10.6519, -2.5198



14.4165, 0.0152, 2.1676



63.7533, -3.4017, 3.4638



15.6573, -0.8354, 0.8507

Same Dimension

The Same Dimension uses a secret algorithm to generate beautiful new colors.



18.1849, 3.0429, 6.3244



22.4783, 5.7902, 9.4620



21.9240, -3.3417, 9.3582



11.8668, -0.3249, 1.2247



20.0285, 15.3658, 12.6105



48.3977, 42.9916, 30.5751

Inverse Universe

The Inverse Universe completely reimagines the original color for something new.



18.1093, -2.9481, -5.7676



22.3465, -3.8474, -10.0509



14.3843, 3.5042, -12.3201



11.8602, -0.9120, 0.0441



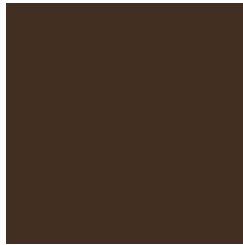
19.5960, -1.1142, -22.0880



47.1597, 0.4656, -59.9506

Previews

White Background



This preview shows how the HunterLab color 18.1845, 3.0437, 6.3242 looks on a white background.

Color Contrast Check

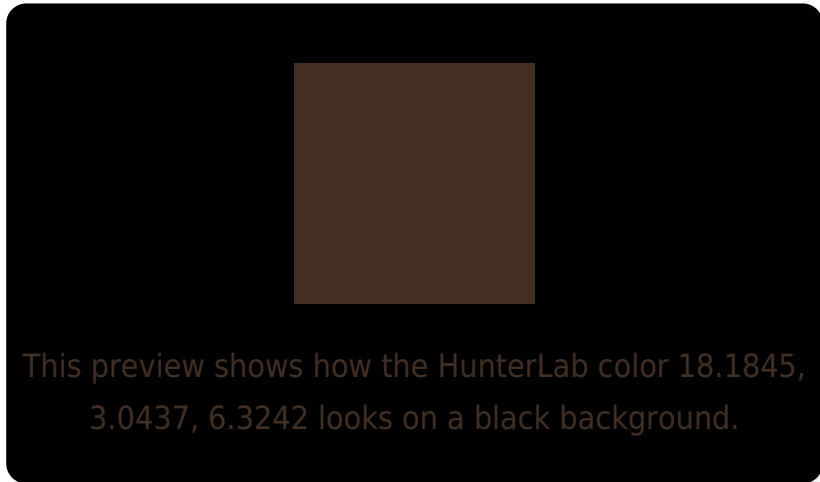
Large Text (above 18pt) WCAG AA ✓ Pass

Any Text WCAG AA ✓ Pass

Large Text (above 18pt) WCAG AAA ✓ Pass

Any Text WCAG AAA ✓ Pass

Black Background



Color Contrast Check

Large Text (above 18pt) WCAG AA × Fail

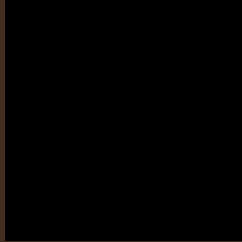
Any Text WCAG AA × Fail

Large Text (above 18pt) WCAG AAA × Fail

Any Text WCAG AAA × Fail

If you want to check with other color combinations, try the [Color Contrast Checker](#).

HunterLab 18.1845, 3.0437, 6.3242 Background



This preview shows how black text looks on a background with the HunterLab color 18.1845, 3.0437, 6.3242.

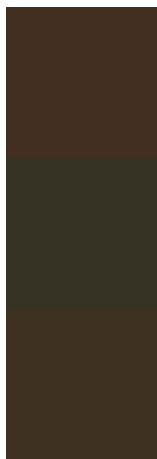


This preview shows how white text looks on a background with the HunterLab color 18.1845, 3.0437,

Color Blindness Simulation

Color vision deficiency is a very complex topic, and I could not describe the different causes any better than Wikipedia does, so if you want to learn more, you should check out their [article about color blindness](#).

Dichromacy



Original Color

18.1845, 3.0437, 6.3242

Protanopia

18.1859, -1.6155, 5.7362

Deuteranopia

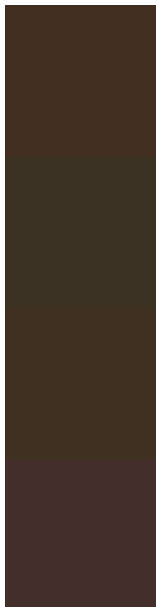
18.2654, 1.0048, 6.3602



Tritanopia

18.1434, 5.7085, 1.7843

Trichromacy



Original Color

18.1845, 3.0437, 6.3242

Protanomaly

18.2548, -0.1898, 6.0806

Deuteranomaly

18.1278, 1.7120, 6.2505

Tritanomaly

18.2459, 4.7203, 3.5825

Monochromacy



Original Color

18.1845, 3.0437, 6.3242

Achromatopsia

18.1947, -0.9708, 0.9886

Achromatomaly

18.1973, -0.0132, 3.1240

CSS Examples

Text

The CSS property to change the color of the text to HunterLab 18.1845, 3.0437, 6.3242 is called "color". The color property can be set on classes, ids or directly on the HTML element.

This example shows how text in the color `rgb(66, 47, 34)` looks like.

```
.text, #text, p{  
    color:rgb(66, 47, 34)  
}
```

If you want to add a text shadow in that color use the text-shadow property, you can generate a text shadow directly with our [CSS Text Shadow Generator](#).

Here you see how black text with a 4 pixel rgb(66, 47, 34) colored shadow looks like.

```
.shadow{ text-shadow: 4px 4px 2px rgb(66, 47, 34) }
```

Border

The CSS property to change the border of an element to HunterLab 18.1845, 3.0437, 6.3242 is called "border".

The border property can be set on classes, ids or directly on the HTML element.

This example shows the color as border, it can be applied via the CSS property "border" or "border-color".

```
.border, #border, table{ border:4px solid rgb(66, 47, 34) }
```


If only the border color should be changed use the property border-color.

```
.border{ border-color:rgb(66, 47, 34) }
```

If you want to add a box shadow in that color use:

Here you see how a box with a 4 pixel rgb(66, 47, 34) colored shadow looks like.

```
.boxshadow{ -moz-box-shadow:4px 4px 4px  
4px rgb(66, 47, 34); -webkit-box-  
shadow:4px 4px 4px 4px rgb(66, 47, 34);  
box-shadow:4px 4px 4px 4px rgb(66, 47, 34)  
}
```

Background

The CSS property to change the background color of an element to HunterLab 18.1845, 3.0437, 6.3242 is called "background". The background property can be set on classes, ids or directly on the HTML element.

```
.background, #background, body{  
background: rgb(66, 47, 34) }
```

If only the background color should be changed can be used:

```
.background{ background-color: rgb(66, 47,  
34) }
```

This example shows the color as background, it is applied via the CSS property "background".

To optimize and compress your CSS code, you can use our [online CSS compressor and optimizer](#) based on csstidy. If you want to create a linear or radial gradient as background or border, check our [CSS Gradient Generator](#).

Hey! You found this booklet interesting? Support Converting Colors with the new Membership Option!

The pro membership hides all ads, plus gives you double the colors in the color bucket, and more awesome pro features!

[Learn more, Memberships starting at \\$2.50/m!](#)

**Follow me
on Twitter!**

@ConvertingColor