

# Converting Colors

HunterLab(18.2344, 2.3848,  
4.8725)

Have a look what the booklet for  
HunterLab(18.2344, 2.3848, 4.8725)  
contains.

<b>HunterLab(18.2315, 2.2632, 4.7453)</b> .....	3
<i><b>Conversions</b></i> .....	4
<i><b>Details</b></i> .....	6
<i><b>Harmonies</b></i> .....	12
<i><b>Previews</b></i> .....	24
<i><b>Color Blindness Simulation</b></i> .....	28
<i><b>CSS Examples</b></i> .....	31

# Color

**HunterLab(18.2315, 2.2632,  
4.7453)**

# Conversions

## Conversions Part 1

Format	Color
Hex	3F3028
RGB	63, 48, 40
RGB Percent	25%, 19%, 16%
CMY	0.7529, 0.8118, 0.8431
CMYK	0.00, 0.24, 0.37, 0.75
HSL	21°, 22%, 20%
HSV	21°, 37%, 25%
XYZ	3.4899, 3.3239, 2.4651
YIQ	51.5730, 11.5080, 0.6920

# Conversions

## Conversions Part 2

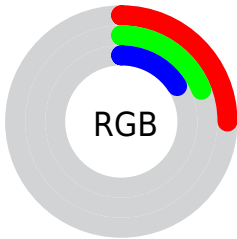
<b>Format</b>	<b>Color</b>
<b>R<sub>YB</sub></b>	63, 52, 40
Decimal	4141096
CIE <sub>Lab</sub>	21.30, 5.42, 7.73
CIE <sub>LCh</sub>	21, 9.439, 54.942
Yxy	3.3240, 0.3761, 0.3582
Android (android.graphics.Color)	4282331176 (0xFF3F3028)
YUV	51.5730, -5.7055, 10.0215
Hunter-Lab	18.2315, 2.2632, 4.7453

# Details

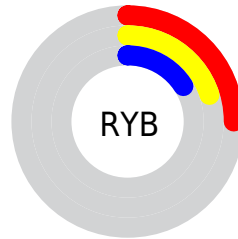
The HunterLab color **18.2315, 2.2632, 4.7453** is a dark color, and the websafe version is hex **333333**. A complement of this color would be **18.8209, -3.1713, -3.2725**, and the grayscale version is **18.4035, -0.9820, 0.9999**.

A 20% lighter version of the original color is **34.6998, 2.0229, 6.7326**, and **3.7208, 6.3721, 2.4043** is the 20% darker color. If you saturate the color by 10%, you get **17.2162, 3.3716, 5.5334**, and if you desaturate by 10%, it is **19.2931, 1.2274, 3.8707**.

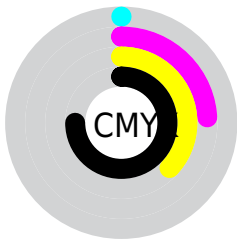
# Distribution



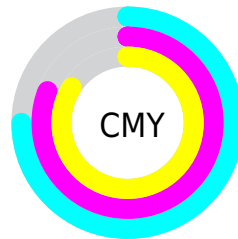
- Red (25%)
- Green (19%)
- Blue (16%)



- Red (25%)
- Yellow (20%)
- Blue (16%)



- Cyan (0%)
- Magenta (24%)
- Yellow (37%)
- Black (75%)



- Cyan (75%)
- Magenta (81%)
- Yellow (84%)

# Brightness & Saturation Gradients

These gradients show how the HunterLab color 18.2315, 2.2632, 4.7453 changes by changing the brightness by 10 percent. The first figure shows a shift by +10% for each color and the second figure -10%.

Similar to the brightness gradients but the following saturation gradients show a change of the HunterLab color 18.2315, 2.2632, 4.7453 by changing the saturation by 10% instead.



■ 18.2315, 2.2632,  
4.7453

■ 18.2315, 2.2632,  
4.7453

■ 114.9590, -0.3011,  
13.8226

■ 11.4156, 2.1929,  
3.7235

■ 34.7149, 2.1105,  
6.7474

■ 3.7900, 6.0312,  
2.6530

■ 44.1887, 1.9227,  
7.7330

0.0000, NaN, NaN

■ 54.3953, 1.6737,  
8.7211

0.0000, NaN, NaN

0.0000, NaN, NaN

■ 65.2853, 1.3703,  
9.7167

0.0000, NaN, NaN

■ 76.8184, 1.0174,  
10.7229

0.0000, NaN, NaN

0.0000, NaN, NaN

■ 88.9605, 0.6191,

11.7417

0.0000, NaN, NaN

101.6825, 0.1787,  
12.7746

18.2315, 2.2632,  
4.7453

18.2315, 2.2632,  
4.7453

17.2162, 3.3716,  
5.5334

19.2931, 1.2274,  
3.8707

16.2509, 4.5566,  
6.2212

20.3954, 0.2624,  
2.9202

15.3414, 5.8166,  
6.7943

21.5350, -0.6370,  
1.9040

14.4936, 7.1461,  
7.2375

22.7086, -1.4762,  
0.8302

13.7133, 8.5308,  
7.5440

23.9132, -2.2602,  
-0.2942

■ 12.9941, 9.8912,  
7.8917

■ 25.1464, -2.9940,  
-1.4635

■ 12.7571, 10.3503,  
8.0420

■ 26.4058, -3.6824,  
-2.6726

■ 27.6895, -4.3296,  
-3.9176

■ 28.9957, -4.9397,  
-5.1950

# Harmonies

## Analogous

The Analogous color harmony consists of three colors that are next to each other on the color wheel.



18.2319, 4.2340, 3.0455



18.2315, 2.2632, 4.7453



18.2319, -0.4909, 5.4370

# Triad

The Triadic color harmony groups three colors that are evenly spaced from another and form a triangle on the color wheel.



18.2319, 2.2625, 4.7456



18.2319, -6.0896, 1.4435



18.2319, 1.3811, -4.3602

# Complementary

The Complementary color scheme is a pair of colors which are on the opposite of each other on the color wheel.



18.2315, 2.2632, 4.7453



18.8209, -3.1713, -3.2725

# Split Complementary

Split-complementary colors differ from the complementary color scheme. The scheme consists of three colors, the original color and two neighbors of the complement color.



18.2319, -1.4517, -4.9618



18.2315, 2.2632, 4.7453



18.2319, -5.6556, -1.3312

# Square

The Square scheme is like the rectangle color scheme, but the four colors are evenly spaced on the color wheel.



18.2319, 2.2625, 4.7456



18.2319, -5.2227, 3.7255



18.2319, -3.9990, -3.7802



18.2319, 3.7038, -2.2427



# Rectangle

The Rectangle color scheme consists of four colors that form a rectangle on the color wheel.



18.2315, 2.2632, 4.7453



18.2319, -2.3574, 5.3234



18.2319, -3.9990, -3.7802



18.2319, 0.4523, -4.7589

# Sweetspot

The Sweet Spot groups the original color and five complimentary colors.



18.2319, 2.2625, 4.7456



27.1773, -0.2566, 3.1329



16.8921, 7.4904, -2.2940



13.9144, -0.1106, 1.6308



62.6995, -3.3455, 3.4066



14.8260, -0.7911, 0.8055



# Same Dimension

The Same Dimension uses a secret algorithm to generate beautiful new colors.



18.2319, 2.2625, 4.7456



22.3960, 4.2815, 7.1154



20.8688, -2.2599, 7.1161



11.0737, -0.2457, 1.0905



18.6445, 17.0704, 11.7875



45.6497, 48.1521, 28.9721



# Inverse Universe

The Inverse Universe completely reimagines the original color for something new.



18.8209, -3.1713, -3.2725



23.3380, -4.4675, -5.7751



16.1215, 1.3148, -7.3379



11.1466, -0.9132, 0.1034



20.5144, -3.4177, -18.2635

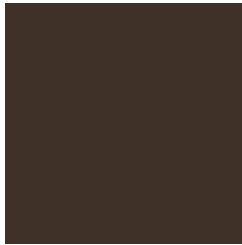


50.4142, -5.9406, -50.1892



# Previews

## White Background



This preview shows how the HunterLab color 18.2315, 2.2632, 4.7453 looks on a white background.

## Color Contrast Check

Large Text (above 18pt) WCAG AA ✓ Pass

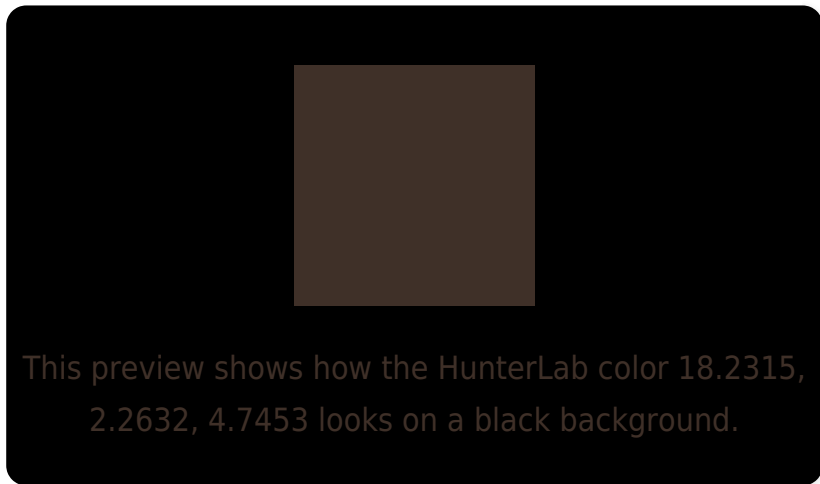
Any Text WCAG AA ✓ Pass

Large Text (above 18pt) WCAG AAA ✓ Pass

Any Text WCAG AAA ✓ Pass



# Black Background



## Color Contrast Check

Large Text (above 18pt) WCAG AA × Fail

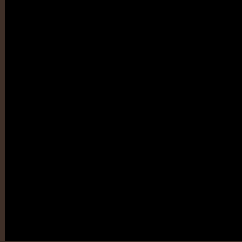
Any Text WCAG AA × Fail

Large Text (above 18pt) WCAG AAA × Fail

Any Text WCAG AAA × Fail

If you want to check with other color combinations, try the [Color Contrast Checker](#).

# HunterLab 18.2315, 2.2632, 4.7453 Background



This preview shows how black text looks on a background with the HunterLab color 18.2315, 2.2632, 4.7453.



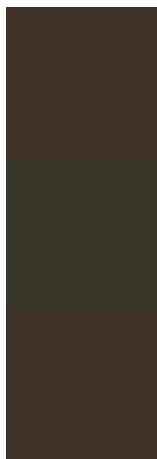
This preview shows how white text looks on a background with the HunterLab color 18.2315, 2.2632,

4.7453.

# Color Blindness Simulation

Color vision deficiency is a very complex topic, and I could not describe the different causes any better than Wikipedia does, so if you want to learn more, you should check out their [article about color blindness](#).

## Dichromacy



### Original Color

18.2315, 2.2632, 4.7453

### Protanopia

18.1990, -1.3897, 4.3553

### Deuteranopia

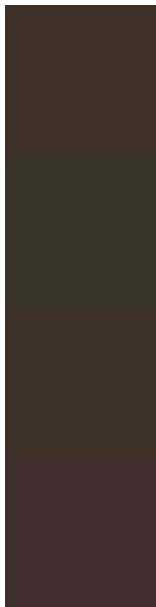
18.1947, 0.9734, 4.6869



## Tritanopia

18.3120, 4.0846, 1.5850

# Trichromacy



## Original Color

18.2315, 2.2632, 4.7453

## Protanomaly

18.1966, -0.1770, 4.3742

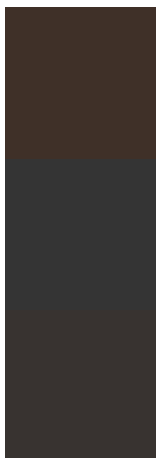
## Deuteranomaly

18.2809, 1.2634, 4.7759

## Tritanomaly

18.2216, 3.6131, 2.8809

# Monochromacy



## Original Color

18.2315, 2.2632, 4.7453

## Achromatopsia

18.5310, -0.9888, 1.0068

## Achromatomaly

18.4981, -0.0627, 2.4347

# CSS Examples

## Text

The CSS property to change the color of the text to HunterLab 18.2315, 2.2632, 4.7453 is called "color". The color property can be set on classes, ids or directly on the HTML element.

This example shows how text in the color `rgb(63, 48, 40)` looks like.

```
.text, #text, p{  
    color:rgb(63, 48, 40)  
}
```

If you want to add a text shadow in that color use the text-shadow property, you can generate a text shadow directly with our [CSS Text Shadow Generator](#).

Here you see how black text with a 4 pixel rgb(63, 48, 40) colored shadow looks like.

```
.shadow{ text-shadow: 4px 4px 2px rgb(63, 48, 40) }
```

## Border

The CSS property to change the border of an element to HunterLab 18.2315, 2.2632, 4.7453 is called "border".

The border property can be set on classes, ids or directly on the HTML element.

This example shows the color as border, it can be applied via the CSS property "border" or "border-color".

```
.border, #border, table{ border:4px solid rgb(63, 48, 40) }
```



If only the border color should be changed use the property border-color.

```
.border{ border-color:rgb(63, 48, 40) }
```

If you want to add a box shadow in that color use:

Here you see how a box with a 4 pixel rgb(63, 48, 40) colored shadow looks like.

```
.boxshadow{ -moz-box-shadow:4px 4px 4px  
4px rgb(63, 48, 40); -webkit-box-  
shadow:4px 4px 4px 4px rgb(63, 48, 40);  
box-shadow:4px 4px 4px 4px rgb(63, 48, 40)  
}
```

# Background

The CSS property to change the background color of an element to HunterLab 18.2315, 2.2632, 4.7453 is called "background". The background property can be set on classes, ids or directly on the HTML element.

```
.background, #background, body{  
background: rgb(63, 48, 40) }
```

If only the background color should be changed can be used:

```
.background{ background-color: rgb(63, 48,  
40) }
```

This example shows the color as background, it is applied via the CSS property "background".

To optimize and compress your CSS code, you can use our [online CSS compressor and optimizer](#) based on csstidy. If you want to create a linear or radial gradient as background or border, check our [CSS Gradient Generator](#).

Hey! You found this booklet interesting? Support Converting Colors with the new Membership Option!

The pro membership hides all ads, plus gives you double the colors in the color bucket, and more awesome pro features!

**[Learn more, Memberships starting at \\$2.50/m!](#)**

**Follow me  
on Twitter!**

@ConvertingColor