

# Converting Colors

HunterLab(18.2551, 3.7806,  
4.3446)

Have a look what the booklet for  
HunterLab(18.2551, 3.7806, 4.3446)  
contains.

<b>HunterLab(18.3261, 3.7851, 4.2719)</b> .....	3
<i><b>Conversions</b></i> .....	4
<i><b>Details</b></i> .....	6
<i><b>Harmonies</b></i> .....	12
<i><b>Previews</b></i> .....	24
<i><b>Color Blindness Simulation</b></i> .....	28
<i><b>CSS Examples</b></i> .....	31

# Color

**HunterLab(18.3261, 3.7851,  
4.2719)**

# Conversions

## Conversions Part 1

Format	Color
Hex	422F2A
RGB	66, 47, 42
RGB Percent	26%, 18%, 16%
CMY	0.7412, 0.8157, 0.8353
CMYK	0.00, 0.29, 0.36, 0.74
HSL	13°, 22%, 21%
HSV	13°, 36%, 26%
XYZ	3.6812, 3.3585, 2.6447
YIQ	52.1110, 12.9290, 2.4730

# Conversions

## Conversions Part 2

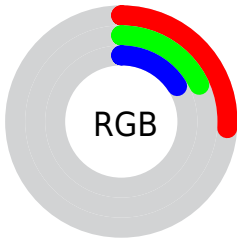
<b>Format</b>	<b>Color</b>
<b>R<sub>YB</sub></b>	66, 48, 42
Decimal	4337450
CIE Lab	21.43, 7.85, 6.61
CIE LCh	21, 10.260, 40.086
Yxy	3.3586, 0.3801, 0.3468
Android (android.graphics.Color)	4282527530 (0xFF422F2A)
YUV	52.1110, -4.9847, 12.1807
Hunter-Lab	18.3261, 3.7851, 4.2719

# Details

The HunterLab color **18.3261, 3.7851, 4.2719** is a dark color, and the websafe version is hex **333333**. A complement of this color would be **20.5498, -4.6318, -2.2895**, and the grayscale version is **18.5820, -0.9915, 1.0096**.

A 20% lighter version of the original color is **34.8736, 4.0011, 6.2291**, and **4.2680, 7.3091, 2.7579** is the 20% darker color. If you saturate the color by 10%, you get **17.0944, 5.3394, 5.0031**, and if you desaturate by 10%, it is **19.6288, 2.3055, 3.4916**.

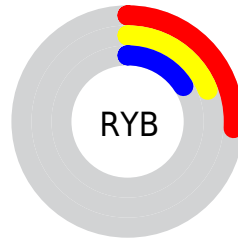
# Distribution



Red (26%)

Green (18%)

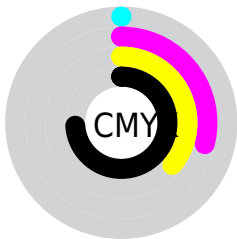
Blue (16%)



Red (26%)

Yellow (19%)

Blue (16%)

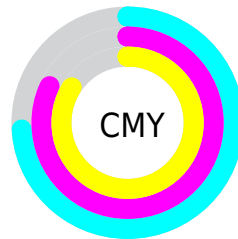


Cyan (0%)

Magenta (29%)

Yellow (36%)

Black (74%)



Cyan (74%)

Magenta (82%)

Yellow (84%)

# Brightness & Saturation Gradients

These gradients show how the HunterLab color 18.3261, 3.7851, 4.2719 changes by changing the brightness by 10 percent. The first figure shows a shift by +10% for each color and the second figure -10%.

Similar to the brightness gradients but the following saturation gradients show a change of the HunterLab color 18.3261, 3.7851, 4.2719 by changing the saturation by 10% instead.



■ 18.3261, 3.7851,  
4.2719

■ 18.3261, 3.7851,  
4.2719

■ 115.1336, 2.3457,  
12.7728

■ 11.4965, 3.5350,  
3.3265

■ 34.8322, 3.9419,  
6.1038

■ 3.9738, 8.3953,  
2.7817

■ 44.3157, 3.8911,  
7.0179

0.0000, NaN, NaN

0.0000, NaN, NaN

■ 54.5314, 3.7704,  
7.9407

0.0000, NaN, NaN

■ 65.4300, 3.5878,  
8.8758

0.0000, NaN, NaN

■ 76.9712, 3.3496,  
9.8253

0.0000, NaN, NaN

0.0000, NaN, NaN

■ 89.1209, 3.0607,

101.8502, 2.7249,  
11.7731

18.3261, 3.7851,  
4.2719

18.3261, 3.7851,  
4.2719

17.0944, 5.3394,  
5.0031

19.6288, 2.3055,  
3.4916

15.9420, 6.9667,  
5.6702

20.9931, 0.9017,  
2.6722

14.8801, 8.6537,  
6.2555

22.4122, -0.4314,  
1.8222

13.9208, 10.3756,  
6.7378

23.8804, -1.6995,  
0.9475

13.0762, 12.0902,  
7.0973

25.3925, -2.9088,  
0.0528

■ 12.3448, 13.6798,  
7.5153

■ 26.9443, -4.0657,  
-0.8589

■ 12.1069, 14.2056,  
7.7089

■ 28.5322, -5.1759,  
-1.7850

■ 30.1532, -6.2450,  
-2.7238

■ 31.8045, -7.2777,  
-3.6739

# Harmonies

## Analogous

The Analogous color harmony consists of three colors that are next to each other on the color wheel.



18.3265, 5.2353, 1.9586



18.3261, 3.7851, 4.2719



18.3265, 1.0859, 5.5498

# Triad

The Triadic color harmony groups three colors that are evenly spaced from another and form a triangle on the color wheel.



18.3265, 3.7844, 4.2722



18.3265, -6.2297, 2.8175



18.3265, 0.0717, -5.4737

# Complementary

The Complementary color scheme is a pair of colors which are on the opposite of each other on the color wheel.



18.3261, 3.7851, 4.2719



20.5498, -4.6318, -2.2895

# Split Complementary

Split-complementary colors differ from the complementary color scheme. The scheme consists of three colors, the original color and two neighbors of the complement color.



18.3265, -2.9560, -5.1411



18.3261, 3.7851, 4.2719



18.3265, -6.4615, -0.0185

# Square

The Square scheme is like the rectangle color scheme, but the four colors are evenly spaced on the color wheel.



18.3265, 3.7844, 4.2722



18.3265, -4.6447, 4.8112



18.3265, -5.3003, -3.0212



18.3265, 2.9999, -3.8666



# Rectangle

The Rectangle color scheme consists of four colors that form a rectangle on the color wheel.



18.3261, 3.7851, 4.2719



18.3265, -0.9878, 5.7912



18.3265, -5.3003, -3.0212



18.3265, -0.9699, -5.5906

# Sweetspot

The Sweet Spot groups the original color and five complimentary colors.



18.3265, 3.7844, 4.2722



28.5721, 0.3193, 2.9793



17.7575, 8.3533, -3.7469



14.5019, 0.2009, 1.5408



63.7533, -3.4017, 3.4638



15.6573, -0.8354, 0.8507



# Same Dimension

The Same Dimension uses a secret algorithm to generate beautiful new colors.



18.3265, 3.7844, 4.2722



22.5988, 6.9444, 6.5528



21.0544, -1.0811, 6.7861



11.7222, -0.0793, 1.0649



17.4444, 22.4019, 11.1414



42.3386, 60.2790, 27.1441



# Inverse Universe

The Inverse Universe completely reimagines the original color for something new.



20.5498, -4.6318, -2.2895



26.2318, -6.9066, -4.1922



17.6040, 0.0679, -6.5108



12.0088, -1.1541, 0.2212



24.7546, -8.8072, -11.9289

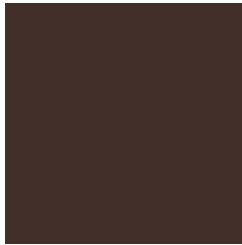


60.9091, -20.5583, -31.7516



# Previews

## White Background



This preview shows how the HunterLab color 18.3261, 3.7851, 4.2719 looks on a white background.

## Color Contrast Check

Large Text (above 18pt) WCAG AA ✓ Pass

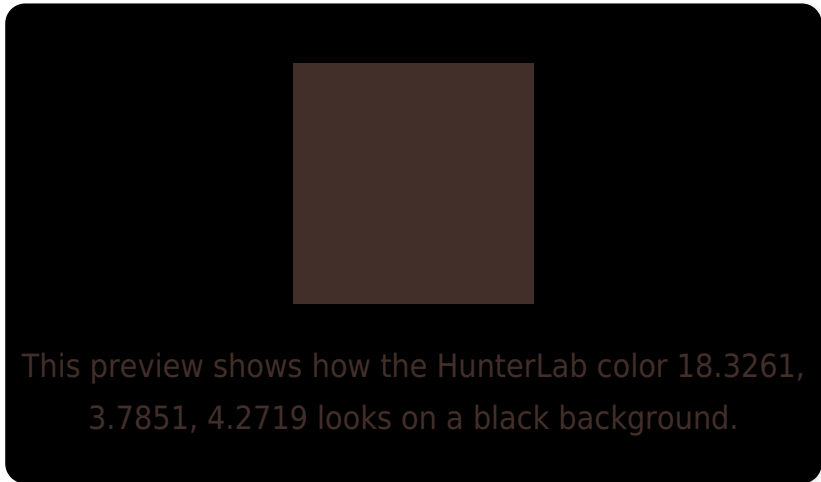
Any Text WCAG AA ✓ Pass

Large Text (above 18pt) WCAG AAA ✓ Pass

Any Text WCAG AAA ✓ Pass



# Black Background



## Color Contrast Check

Large Text (above 18pt) WCAG AA × Fail

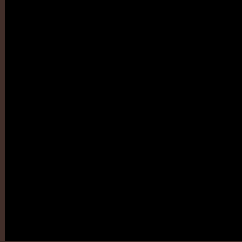
Any Text WCAG AA × Fail

Large Text (above 18pt) WCAG AAA × Fail

Any Text WCAG AAA × Fail

If you want to check with other color combinations, try the [Color Contrast Checker](#).

# HunterLab 18.3261, 3.7851, 4.2719 Background



This preview shows how black text looks on a background with the HunterLab color 18.3261, 3.7851, 4.2719.



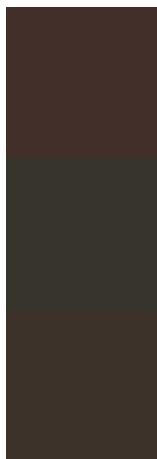
This preview shows how white text looks on a background with the HunterLab color 18.3261, 3.7851,



# Color Blindness Simulation

Color vision deficiency is a very complex topic, and I could not describe the different causes any better than Wikipedia does, so if you want to learn more, you should check out their [article about color blindness](#).

## Dichromacy



### Original Color

18.3261, 3.7851, 4.2719

### Protanopia

18.4989, -1.4577, 3.7362

### Deuteranopia

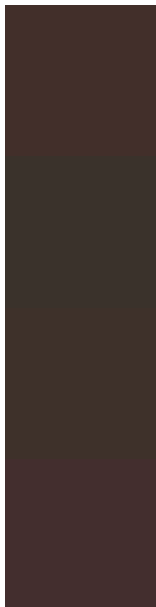
18.4636, 0.7716, 4.3566



## Tritanopia

18.3549, 5.2820, 2.0166

# Trichromacy



## Original Color

18.3261, 3.7851, 4.2719

## Protanomaly

18.3171, 0.3137, 3.8946

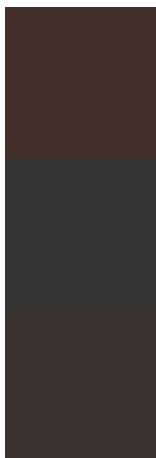
## Deuteranomaly

18.4063, 1.7586, 4.3167

## Tritanomaly

18.2881, 4.9380, 2.9757

# Monochromacy



## Original Color

18.3261, 3.7851, 4.2719

## Achromatopsia

18.5310, -0.9888, 1.0068

## Achromatomaly

18.3425, 0.6126, 2.2745

# CSS Examples

## Text

The CSS property to change the color of the text to HunterLab 18.3261, 3.7851, 4.2719 is called "color". The color property can be set on classes, ids or directly on the HTML element.

This example shows how text in the color `rgb(66, 47, 42)` looks like.

```
.text, #text, p{  
    color:rgb(66, 47, 42)  
}
```

If you want to add a text shadow in that color use the text-shadow property, you can generate a text shadow directly with our [CSS Text Shadow Generator](#).

Here you see how black text with a 4 pixel rgb(66, 47, 42) colored shadow looks like.

```
.shadow{ text-shadow: 4px 4px 2px rgb(66, 47, 42) }
```

## Border

The CSS property to change the border of an element to HunterLab 18.3261, 3.7851, 4.2719 is called "border". The border property can be set on classes, ids or directly on the HTML element.

This example shows the color as border, it can be applied via the CSS property "border" or "border-color".

```
.border, #border, table{ border:4px solid rgb(66, 47, 42) }
```



If only the border color should be changed use the property `border-color`.

```
.border{ border-color:rgb(66, 47, 42) }
```

If you want to add a box shadow in that color use:

Here you see how a box with a 4 pixel `rgb(66, 47, 42)` colored shadow looks like.

```
.boxshadow{ -moz-box-shadow:4px 4px 4px  
4px rgb(66, 47, 42); -webkit-box-  
shadow:4px 4px 4px 4px rgb(66, 47, 42);  
box-shadow:4px 4px 4px 4px rgb(66, 47, 42)  
}
```

# Background

The CSS property to change the background color of an element to HunterLab 18.3261, 3.7851, 4.2719 is called "background". The background property can be set on classes, ids or directly on the HTML element.

```
.background, #background, body{  
background: rgb(66, 47, 42) }
```

If only the background color should be changed can be used:

```
.background{ background-color: rgb(66, 47,  
42) }
```

This example shows the color as background, it is applied via the CSS property "background".

To optimize and compress your CSS code, you can use our [online CSS compressor and optimizer](#) based on csstidy. If you want to create a linear or radial gradient as background or border, check our [CSS Gradient Generator](#).

Hey! You found this booklet interesting? Support Converting Colors with the new Membership Option!

The pro membership hides all ads, plus gives you double the colors in the color bucket, and more awesome pro features!

**[Learn more, Memberships starting at \\$2.50/m!](#)**

**Follow me  
on Twitter!**

@ConvertingColor