

Converting Colors

HunterLab(18.2752, 10.3996,
2.2749)

Have a look what the booklet for
HunterLab(18.2752, 10.3996,
2.2749) contains.

HunterLab(18.2641, 10.1306, 2.3541)	3
<i>Conversions</i>	4
<i>Details</i>	6
<i>Harmonies</i>	12
<i>Previews</i>	24
<i>Color Blindness Simulation</i>	28
<i>CSS Examples</i>	31

Color

**HunterLab(18.2641, 10.1306,
2.3541)**

Conversions

Conversions Part 1

Format	Color
Hex	4C2930
RGB	76, 41, 48
RGB Percent	30%, 16%, 19%
CMY	0.7020, 0.8392, 0.8118
CMYK	0.00, 0.46, 0.37, 0.70
HSL	348°, 30%, 23%
HSV	348°, 46%, 30%
XYZ	4.3069, 3.3358, 3.2132
YIQ	52.2630, 18.6130, 9.5970

Conversions

Conversions Part 2

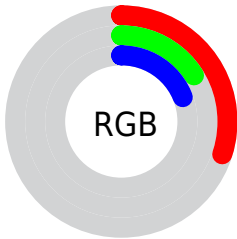
Format	Color
RYB	76, 41, 48
Decimal	4991280
CIELab	21.34, 17.30, 2.58
CIElCh	21, 17.492, 8.474
Yxy	3.3359, 0.3967, 0.3073
Android (android.graphics.Color)	4283181360 (0xFF4C2930)
YUV	52.2630, -2.1017, 20.8173
Hunter-Lab	18.2641, 10.1306, 2.3541

Details

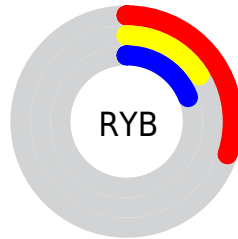
The HunterLab color **18.2641, 10.1306, 2.3541** is a dark color, and the websafe version is hex **663333**. A complement of this color would be **24.6375, -9.9823, 1.4568**, and the grayscale version is **18.6224, -0.9936, 1.0118**.

A 20% lighter version of the original color is **34.7277, 11.3546, 3.5183**, and **5.8316, 9.9869, 3.7683** is the 20% darker color. If you saturate the color by 10%, you get **16.7728, 12.7064, 2.8412**, and if you desaturate by 10%, it is **19.9176, 7.5341, 1.9865**.

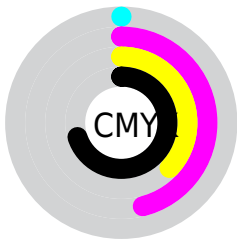
Distribution



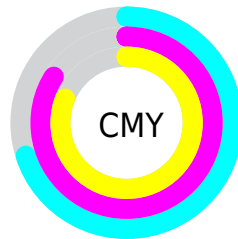
- Red (30%)
- Green (16%)
- Blue (19%)



- Red (30%)
- Yellow (16%)
- Blue (19%)



- Cyan (0%)
- Magenta (46%)
- Yellow (37%)
- Black (70%)



- Cyan (70%)
- Magenta (84%)
- Yellow (81%)

Brightness & Saturation Gradients

These gradients show how the HunterLab color 18.2641, 10.1306, 2.3541 changes by changing the brightness by 10 percent. The first figure shows a shift by +10% for each color and the second figure -10%.

Similar to the brightness gradients but the following saturation gradients show a change of the HunterLab color 18.2641, 10.1306, 2.3541 by changing the saturation by 10% instead.

■ 18.2641, 10.1306,
2.3541

■ 18.2641, 10.1306,
2.3541

■ 115.0192, 12.8974,
8.8455

■ 11.4435, 9.2560,
1.7697

■ 34.7554, 11.4134,
3.6014

■ 3.8544, 19.3537,
2.6981

■ 44.2325, 11.8723,
4.2676

0.0000, NaN, NaN

0.0000, NaN, NaN

■ 54.4422, 12.2324,
4.9625

0.0000, NaN, NaN

■ 65.3352, 12.5058,
5.6854

0.0000, NaN, NaN

■ 76.8711, 12.7022,
6.4359

0.0000, NaN, NaN

0.0000, NaN, NaN

■ 89.0159, 12.8290,

101.7403, 12.8924,
8.0166

18.2641, 10.1306,
2.3541

18.2641, 10.1306,
2.3541

16.7728, 12.7064,
2.8412

19.9176, 7.5341,
1.9865

15.4692, 15.1794,
3.4497

21.7082, 4.9692,
1.7265

14.3813, 17.4229,
4.1690

23.6162, 2.4594,
1.5613

13.5331, 19.2794,
4.9668

25.6250, 0.0137,
1.4772

12.8220, 20.9822,
5.7009

27.7212, -2.3677,
1.4622

■ 12.5362, 21.7482,
5.9331

■ 29.8937, -4.6894,
1.5057

■ 32.1337, -6.9578,
1.5988

■ 34.4338, -9.1798,
1.7342

■ 36.7880, -11.3623,
1.9059

Harmonies

Analogous

The Analogous color harmony consists of three colors that are next to each other on the color wheel.



18.2645, 9.4048, -2.8954



18.2641, 10.1306, 2.3541



18.2645, 7.6260, 6.0197

Triad

The Triadic color harmony groups three colors that are evenly spaced from another and form a triangle on the color wheel.



18.2645, 10.1297, 2.3545



18.2645, -6.8457, 7.0313



18.2645, -4.5367, -10.3960

Complementary

The Complementary color scheme is a pair of colors which are on the opposite of each other on the color wheel.



18.2641, 10.1306, 2.3541



24.6375, -9.9823, 1.4568

Split Complementary

Split-complementary colors differ from the complementary color scheme. The scheme consists of three colors, the original color and two neighbors of the complement color.



18.2645, -8.2311, -6.0528



18.2641, 10.1306, 2.3541



18.2645, -9.4556, 4.1807

Square

The Square scheme is like the rectangle color scheme, but the four colors are evenly spaced on the color wheel.



18.2645, 10.1297, 2.3545



18.2645, -2.4406, 8.1742



18.2645, -9.9325, -0.4795



18.2645, 0.5372, -11.2947

Rectangle

The Rectangle color scheme consists of four colors that form a rectangle on the color wheel.



18.2641, 10.1306, 2.3541



18.2645, 4.6130, 7.4355



18.2645, -9.9325, -0.4795



18.2645, -5.9637, -9.2416

Sweetspot

The Sweet Spot groups the original color and five complimentary colors.



18.2645, 10.1297, 2.3545



31.5723, 2.7520, 2.0379



18.3659, 12.0991, -10.5444



16.0174, 1.6216, 1.0546



66.9319, -3.5713, 3.6365



18.1947, -0.9708, 0.9886

Same Dimension

The Same Dimension uses a secret algorithm to generate beautiful new colors.



18.2645, 10.1297, 2.3545



21.9511, 17.1261, 3.8277



20.2690, 4.9216, 6.4388



13.0684, 0.3373, 0.7772



16.9609, 29.3521, 8.5865



41.1543, 70.9552, 22.8939

Inverse Universe

The Inverse Universe completely reimagines the original color for something new.



18.2645, 10.1297, 2.3545



21.9511, 17.1261, 3.8277



21.9809, -4.8614, -4.9836



13.0684, 0.3373, 0.7772



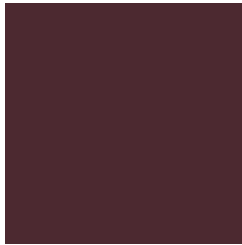
16.9609, 29.3521, 8.5865



41.1543, 70.9552, 22.8939

Previews

White Background



This preview shows how the HunterLab color 18.2641, 10.1306, 2.3541 looks on a white background.

Color Contrast Check

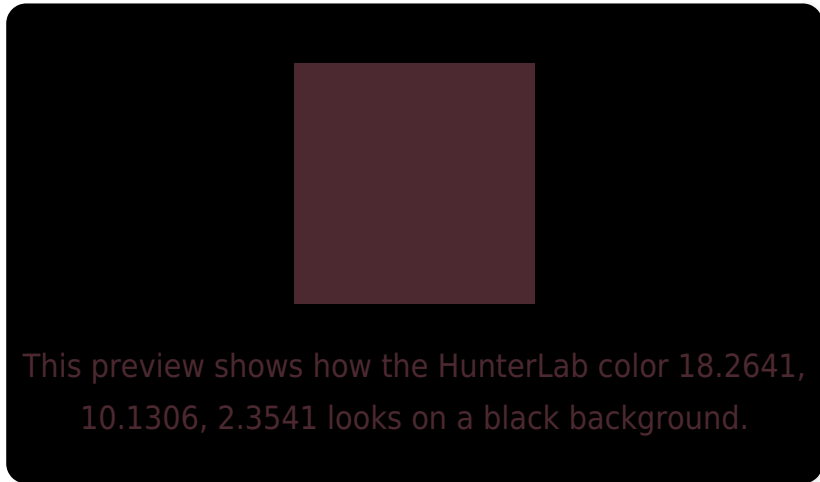
Large Text (above 18pt) WCAG AA ✓ Pass

Any Text WCAG AA ✓ Pass

Large Text (above 18pt) WCAG AAA ✓ Pass

Any Text WCAG AAA ✓ Pass

Black Background



Color Contrast Check

Large Text (above 18pt) WCAG AA × Fail

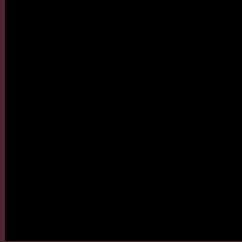
Any Text WCAG AA × Fail

Large Text (above 18pt) WCAG AAA × Fail

Any Text WCAG AAA × Fail

If you want to check with other color combinations, try the [Color Contrast Checker](#).

HunterLab 18.2641, 10.1306, 2.3541 Background



This preview shows how black text looks on a background with the HunterLab color 18.2641, 10.1306, 2.3541.



This preview shows how white text looks on a background with the HunterLab color 18.2641, 10.1306,

Color Blindness Simulation

Color vision deficiency is a very complex topic, and I could not describe the different causes any better than Wikipedia does, so if you want to learn more, you should check out their [article about color blindness](#).

Dichromacy



Original Color

18.2641, 10.1306, 2.3541

Protanopia

18.3414, -0.3138, 0.0146

Deuteranopia

18.4615, 0.9276, 3.0910



Tritanopia

18.3899, 9.3815, 3.4919

Trichromacy



Original Color

18.2641, 10.1306, 2.3541

Protanomaly

18.0916, 3.4723, 0.5617

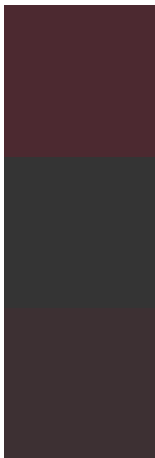
Deuteranomaly

18.3360, 4.0246, 2.6730

Tritanomaly

18.4111, 9.4856, 3.1871

Monochromacy



Original Color

18.2641, 10.1306, 2.3541

Achromatopsia

18.5310, -0.9888, 1.0068

Achromatomaly

18.2894, 2.9233, 1.1679

CSS Examples

Text

The CSS property to change the color of the text to HunterLab 18.2641, 10.1306, 2.3541 is called "color". The color property can be set on classes, ids or directly on the HTML element.

This example shows how text in the color `rgb(76, 41, 48)` looks like.

```
.text, #text, p{  
    color:rgb(76, 41, 48)  
}
```

If you want to add a text shadow in that color use the text-shadow property, you can generate a text shadow directly with our [CSS Text Shadow Generator](#).

Here you see how black text with a 4 pixel rgb(76, 41, 48) colored shadow looks like.

```
.shadow{ text-shadow: 4px 4px 2px rgb(76, 41, 48) }
```

Border

The CSS property to change the border of an element to HunterLab 18.2641, 10.1306, 2.3541 is called "border". The border property can be set on classes, ids or directly on the HTML element.

This example shows the color as border, it can be applied via the CSS property "border" or "border-color".

```
.border, #border, table{ border:4px solid rgb(76, 41, 48) }
```


If only the border color should be changed use the property `border-color`.

```
.border{ border-color:rgb(76, 41, 48) }
```

If you want to add a box shadow in that color use:

Here you see how a box with a 4 pixel `rgb(76, 41, 48)` colored shadow looks like.

```
.boxshadow{ -moz-box-shadow:4px 4px 4px  
4px rgb(76, 41, 48); -webkit-box-  
shadow:4px 4px 4px 4px rgb(76, 41, 48);  
box-shadow:4px 4px 4px 4px rgb(76, 41, 48)  
}
```

Background

The CSS property to change the background color of an element to HunterLab 18.2641, 10.1306, 2.3541 is called "background". The background property can be set on classes, ids or directly on the HTML element.

```
.background, #background, body{  
background: rgb(76, 41, 48) }
```

If only the background color should be changed can be used:

```
.background{ background-color: rgb(76, 41,  
48) }
```

This example shows the color as background, it is applied via the CSS property "background".

To optimize and compress your CSS code, you can use our [online CSS compressor and optimizer](#) based on csstidy. If you want to create a linear or radial gradient as background or border, check our [CSS Gradient Generator](#).

Hey! You found this booklet interesting? Support Converting Colors with the new Membership Option!

The pro membership hides all ads, plus gives you double the colors in the color bucket, and more awesome pro features!

[Learn more, Memberships starting at \\$2.50/m!](#)

**Follow me
on Twitter!**

@ConvertingColor