

Converting Colors

HunterLab(18.3132, 5.8554,
3.2682)

Have a look what the booklet for
HunterLab(18.3132, 5.8554, 3.2682)
contains.

HunterLab(18.2522, 5.8694, 3.2852)	3
<i>Conversions</i>	4
<i>Details</i>	6
<i>Harmonies</i>	12
<i>Previews</i>	24
<i>Color Blindness Simulation</i>	28
<i>CSS Examples</i>	31

Color

**HunterLab(18.2522, 5.8694,
3.2852)**

Conversions

Conversions Part 1

Format	Color
Hex	452D2D
RGB	69, 45, 45
RGB Percent	27%, 18%, 18%
CMY	0.7294, 0.8235, 0.8235
CMYK	0.00, 0.35, 0.35, 0.73
HSL	0°, 21%, 22%
HSV	0°, 35%, 27%
XYZ	3.8663, 3.3314, 2.9219
YIQ	52.1760, 14.3040, 5.0880

Conversions

Conversions Part 2

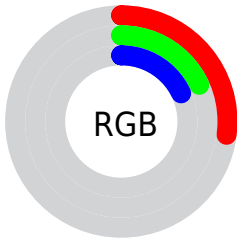
Format	Color
RYB	69, 45, 45
Decimal	4533549
CIELab	21.33, 11.07, 4.48
CIELCh	21, 11.943, 22.015
Yxy	3.3316, 0.3821, 0.3292
Android (android.graphics.Color)	4282723629 (0xFF452D2D)
YUV	52.1760, -3.5378, 14.7546
Hunter-Lab	18.2522, 5.8694, 3.2852

Details

The HunterLab color **18.2522, 5.8694, 3.2852** is a dark color, and the websafe version is hex **333333**. A complement of this color would be **22.8990, -6.6757, -0.5844**, and the grayscale version is **18.5988, -0.9924, 1.0105**.

A 20% lighter version of the original color is **34.7693, 6.4102, 4.6593**, and **4.8271, 8.2666, 3.1192** is the 20% darker color. If you saturate the color by 10%, you get **16.7289, 8.0923, 3.9208**, and if you desaturate by 10%, it is **19.8983, 3.7105, 2.6809**.

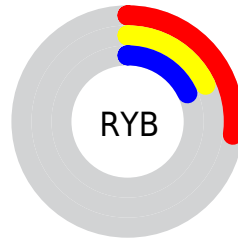
Distribution



Red (27%)

Green (18%)

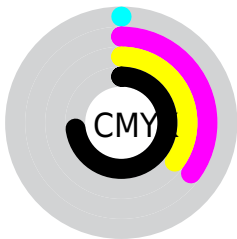
Blue (18%)



Red (27%)

Yellow (18%)

Blue (18%)

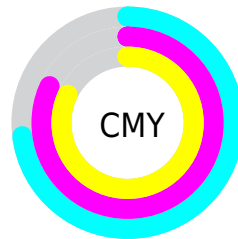


Cyan (0%)

Magenta (35%)

Yellow (35%)

Black (73%)



Cyan (73%)

Magenta (82%)

Yellow (82%)

Brightness & Saturation Gradients

These gradients show how the HunterLab color 18.2522, 5.8694, 3.2852 changes by changing the brightness by 10 percent. The first figure shows a shift by +10% for each color and the second figure -10%.

Similar to the brightness gradients but the following saturation gradients show a change of the HunterLab color 18.2522, 5.8694, 3.2852 by changing the saturation by 10% instead.

■ 18.2522, 5.8694,
3.2852

■ 18.2522, 5.8694,
3.2852

■ 114.9972, 5.9060,
10.7094

■ 11.4333, 5.3900,
2.5328

■ 34.7406, 6.4281,
4.8026

■ 3.8310, 12.3891,
2.6817

■ 44.2165, 6.5567,
5.5837

0.0000, NaN, NaN

0.0000, NaN, NaN

■ 54.4251, 6.6044,
6.3844

0.0000, NaN, NaN

■ 65.3170, 6.5810,
7.2060

0.0000, NaN, NaN

■ 76.8519, 6.4940,
8.0491

0.0000, NaN, NaN

0.0000, NaN, NaN

■ 88.9957, 6.3495,

8.9140

0.0000, NaN, NaN

101.7192, 6.1522,
9.8008

18.2522, 5.8694,
3.2852

18.2522, 5.8694,
3.2852

16.7289, 8.0923,
3.9208

19.8983, 3.7105,
2.6809

15.3486, 10.3494,
4.5777

21.6481, 1.6303,
2.1100

14.1360, 12.5782,
5.2371

23.4874, -0.3711,
1.5718

13.1167, 14.6784,
5.8674

25.4041, -2.2987,
1.0641

12.3140, 16.5140,
6.4245

27.3886, -4.1600,
0.5833

■ 11.6247, 18.2457,
6.9552

■ 29.4331, -5.9634,
0.1263

■ 11.2486, 19.2614,
7.2685

■ 31.5311, -7.7171,
-0.3101

■ 33.6773, -9.4283,
-0.7288

■ 35.8674, -11.1037,
-1.1324

Harmonies

Analogous

The Analogous color harmony consists of three colors that are next to each other on the color wheel.



18.2526, 6.3688, 0.0585



18.2522, 5.8694, 3.2852



18.2526, 3.4663, 5.4447

Triad

The Triadic color harmony groups three colors that are evenly spaced from another and form a triangle on the color wheel.



18.2526, 5.8686, 3.2855



18.2526, -6.0985, 4.5875



18.2526, -1.9231, -6.7701

Complementary

The Complementary color scheme is a pair of colors which are on the opposite of each other on the color wheel.



18.2522, 5.8694, 3.2852



22.8990, -6.6757, -0.5844

Split Complementary

Split-complementary colors differ from the complementary color scheme. The scheme consists of three colors, the original color and two neighbors of the complement color.



18.2526, -5.0283, -4.9702



18.2522, 5.8694, 3.2852



18.2526, -7.3145, 1.8816

Square

The Square scheme is like the rectangle color scheme, but the four colors are evenly spaced on the color wheel.



18.2526, 5.8686, 3.2855



18.2526, -3.4887, 6.0891



18.2526, -6.9384, -1.6406



18.2526, 1.6827, -6.1947

Rectangle

The Rectangle color scheme consists of four colors that form a rectangle on the color wheel.



18.2522, 5.8694, 3.2852



18.2526, 1.2036, 6.1966



18.2526, -6.9384, -1.6406



18.2526, -3.0558, -6.4123

Sweetspot

The Sweet Spot groups the original color and five complimentary colors.



18.2526, 5.8686, 3.2855



29.1639, 0.9661, 2.4301



18.8989, 9.1161, -5.8583



15.0949, 0.5925, 1.2888



64.8100, -3.4581, 3.5212



16.4960, -0.8802, 0.8963

Same Dimension

The Same Dimension uses a secret algorithm to generate beautiful new colors.



18.2526, 5.8686, 3.2855



21.9484, 10.1917, 5.0016



20.9307, 0.8187, 5.8792



12.3075, 0.2117, 0.9598



16.3652, 28.0238, 10.5748



40.4018, 69.1874, 26.1067

Inverse Universe

The Inverse Universe completely reimagines the original color for something new.



22.8990, -6.6757, -0.5844



29.3860, -10.0544, -1.2487



19.7834, -1.9632, -4.7174



12.9552, -1.5162, 0.4273



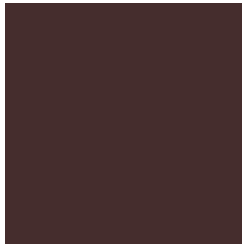
31.4920, -16.6943, -3.3241



77.7472, -41.2145, -8.2069

Previews

White Background



This preview shows how the HunterLab color 18.2522, 5.8694, 3.2852 looks on a white background.

Color Contrast Check

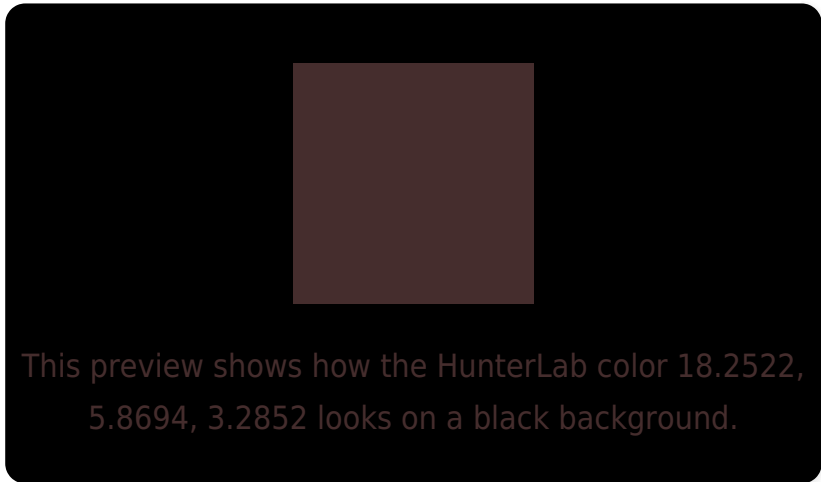
Large Text (above 18pt) WCAG AA ✓ Pass

Any Text WCAG AA ✓ Pass

Large Text (above 18pt) WCAG AAA ✓ Pass

Any Text WCAG AAA ✓ Pass

Black Background



Color Contrast Check

Large Text (above 18pt) WCAG AA × Fail

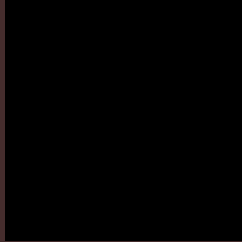
Any Text WCAG AA × Fail

Large Text (above 18pt) WCAG AAA × Fail

Any Text WCAG AAA × Fail

If you want to check with other color combinations, try the [Color Contrast Checker](#).

HunterLab 18.2522, 5.8694, 3.2852 Background



This preview shows how black text looks on a background with the HunterLab color 18.2522, 5.8694, 3.2852.

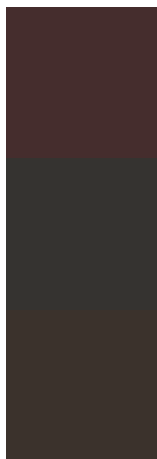


This preview shows how white text looks on a background with the HunterLab color 18.2522, 5.8694,

Color Blindness Simulation

Color vision deficiency is a very complex topic, and I could not describe the different causes any better than Wikipedia does, so if you want to learn more, you should check out their [article about color blindness](#).

Dichromacy



Original Color

18.2522, 5.8694, 3.2852

Protanopia

18.2700, -0.8496, 2.1684

Deuteranopia

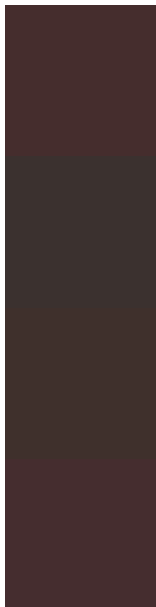
18.4197, 0.7028, 3.6924



Tritanopia

18.3177, 6.2029, 2.3449

Trichromacy



Original Color

18.2522, 5.8694, 3.2852

Protanomaly

18.2529, 1.4541, 2.5372

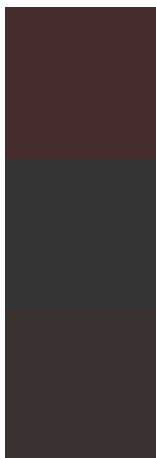
Deuteranomaly

18.3099, 2.6779, 3.6133

Tritanomaly

18.2954, 6.0894, 2.6648

Monochromacy



Original Color

18.2522, 5.8694, 3.2852

Achromatopsia

18.5310, -0.9888, 1.0068

Achromatomaly

18.2152, 1.4185, 1.7908

CSS Examples

Text

The CSS property to change the color of the text to HunterLab 18.2522, 5.8694, 3.2852 is called "color". The color property can be set on classes, ids or directly on the HTML element.

This example shows how text in the color `rgb(69, 45, 45)` looks like.

```
.text, #text, p{  
    color:rgb(69, 45, 45)  
}
```

If you want to add a text shadow in that color use the text-shadow property, you can generate a text shadow directly with our [CSS Text Shadow Generator](#).

Here you see how black text with a 4 pixel rgb(69, 45, 45) colored shadow looks like.

```
.shadow{ text-shadow: 4px 4px 2px rgb(69, 45, 45) }
```

Border

The CSS property to change the border of an element to HunterLab 18.2522, 5.8694, 3.2852 is called "border". The border property can be set on classes, ids or directly on the HTML element.

This example shows the color as border, it can be applied via the CSS property "border" or "border-color".

```
.border, #border, table{ border:4px solid rgb(69, 45, 45) }
```


If only the border color should be changed use the property border-color.

```
.border{ border-color:rgb(69, 45, 45) }
```

If you want to add a box shadow in that color use:

Here you see how a box with a 4 pixel rgb(69, 45, 45) colored shadow looks like.

```
.boxshadow{ -moz-box-shadow:4px 4px 4px  
4px rgb(69, 45, 45); -webkit-box-  
shadow:4px 4px 4px 4px rgb(69, 45, 45);  
box-shadow:4px 4px 4px 4px rgb(69, 45, 45)  
}
```

Background

The CSS property to change the background color of an element to HunterLab 18.2522, 5.8694, 3.2852 is called "background". The background property can be set on classes, ids or directly on the HTML element.

```
.background, #background, body{  
background: rgb(69, 45, 45) }
```

If only the background color should be changed can be used:

```
.background{ background-color: rgb(69, 45,  
45) }
```

This example shows the color as background, it is applied via the CSS property "background".

To optimize and compress your CSS code, you can use our [online CSS compressor and optimizer](#) based on csstidy. If you want to create a linear or radial gradient as background or border, check our [CSS Gradient Generator](#).

Hey! You found this booklet interesting? Support Converting Colors with the new Membership Option!

The pro membership hides all ads, plus gives you double the colors in the color bucket, and more awesome pro features!

[Learn more, Memberships starting at \\$2.50/m!](#)

**Follow me
on Twitter!**

@ConvertingColor