

# Converting Colors

HunterLab(18.3222, 4.6208,  
2.7990)

Have a look what the booklet for  
HunterLab(18.3222, 4.6208, 2.7990)  
contains.

<b>HunterLab(18.2139, 4.7474, 2.5522)</b> .....	3
<i><b>Conversions</b></i> .....	4
<i><b>Details</b></i> .....	6
<i><b>Harmonies</b></i> .....	12
<i><b>Previews</b></i> .....	24
<i><b>Color Blindness Simulation</b></i> .....	28
<i><b>CSS Examples</b></i> .....	31

# Color

**HunterLab(18.2139, 4.7474,  
2.5522)**

# Conversions

## Conversions Part 1

Format	Color
Hex	422E2F
RGB	66, 46, 47
RGB Percent	26%, 18%, 18%
CMY	0.7412, 0.8196, 0.8157
CMYK	0.00, 0.30, 0.29, 0.74
HSL	357°, 18%, 22%
HSV	357°, 30%, 26%
XYZ	3.7368, 3.3175, 3.1327
YIQ	52.0940, 11.5990, 4.5510

# Conversions

## Conversions Part 2

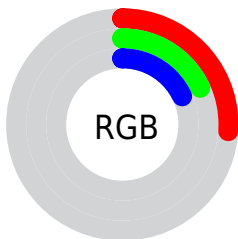
<b>Format</b>	<b>Color</b>
<b>RYB</b>	66, 46, 47
Decimal	4337199
CIELab	21.27, 9.36, 2.98
CIELCh	21, 9.820, 17.666
Yxy	3.3176, 0.3668, 0.3257
Android (android.graphics.Color)	4282527279 (0xFF422E2F)
YUV	52.0940, -2.5113, 12.1956
Hunter-Lab	18.2139, 4.7474, 2.5522

# Details

The HunterLab color **18.2139, 4.7474, 2.5522** is a dark color, and the websafe version is hex **333333**. A complement of this color would be **22.0431, -5.9480, 0.0267**, and the grayscale version is **18.5684, -0.9908, 1.0089**.

A 20% lighter version of the original color is **34.7699, 5.2404, 3.8577**, and **4.5461, 7.7854, 2.9376** is the 20% darker color. If you saturate the color by 10%, you get **16.7154, 6.8541, 3.0663**, and if you desaturate by 10%, it is **19.8188, 2.7003, 2.0854**.

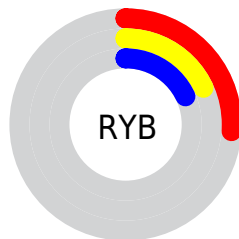
# Distribution



Red (26%)

Green (18%)

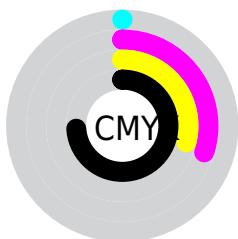
Blue (18%)



Red (26%)

Yellow (18%)

Blue (18%)

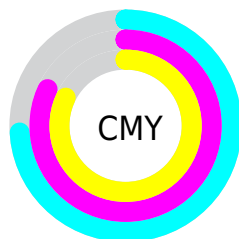


Cyan (0%)

Magenta (30%)

Yellow (29%)

Black (74%)



Cyan (74%)

Magenta (82%)

Yellow (82%)

# Brightness & Saturation Gradients

These gradients show how the HunterLab color 18.2139, 4.7474, 2.5522 changes by changing the brightness by 10 percent. The first figure shows a shift by +10% for each color and the second figure -10%.

Similar to the brightness gradients but the following saturation gradients show a change of the HunterLab color 18.2139, 4.7474, 2.5522 by changing the saturation by 10% instead.



■ 18.2139, 4.7474,  
2.5522

■ 18.2139, 4.7474,  
2.5522

■ 114.9264, 4.0094,  
9.2375

■ 11.4005, 4.3867,  
1.9330

■ 34.6931, 5.0964,  
3.8555

■ 3.7548, 10.6579,  
2.6283

■ 44.1651, 5.1310,  
4.5456

0.0000, NaN, NaN

0.0000, NaN, NaN

■ 54.3699, 5.0902,  
5.2624

0.0000, NaN, NaN

■ 65.2584, 4.9831,  
6.0059

0.0000, NaN, NaN

■ 76.7900, 4.8165,  
6.7757

0.0000, NaN, NaN

0.0000, NaN, NaN

■ 88.9307, 4.5960,

101.6513, 4.3257,  
8.3920

18.2139, 4.7474,  
2.5522

18.2139, 4.7474,  
2.5522

16.7154, 6.8541,  
3.0663

19.8188, 2.7003,  
2.0854

15.3400, 9.0009,  
3.6256

21.5137, 0.7221,  
1.6623

14.1094, 11.1430,  
4.2228

23.2867, -1.1890,  
1.2791

13.0470, 13.2042,  
4.8400

25.1278, -3.0381,  
0.9312

12.1758, 15.0734,  
5.4462

27.0289, -4.8319,  
0.6139

■ 11.4794, 16.7265,  
5.9756

■ 28.9833, -6.5775,  
0.3233

■ 10.7957, 18.5548,  
6.4574

■ 30.9855, -8.2818,  
0.0555

■ 33.0311, -9.9511,  
-0.1925

■ 35.1162, -11.5908,  
-0.4235

# Harmonies

## Analogous

The Analogous color harmony consists of three colors that are next to each other on the color wheel.



18.2143, 4.8997, -0.1979



18.2139, 4.7474, 2.5522



18.2143, 3.0023, 4.5429

# Triad

The Triadic color harmony groups three colors that are evenly spaced from another and form a triangle on the color wheel.



18.2143, 4.7467, 2.5525



18.2143, -4.9751, 4.2607



18.2143, -2.1675, -5.0994

# Complementary

The Complementary color scheme is a pair of colors which are on the opposite of each other on the color wheel.



18.2139, 4.7474, 2.5522



22.0431, -5.9480, 0.0267

# Split Complementary

Split-complementary colors differ from the complementary color scheme. The scheme consists of three colors, the original color and two neighbors of the complement color.



18.2143, -4.6338, -3.4601



18.2139, 4.7474, 2.5522



18.2143, -6.1843, 2.1057

# Square

The Square scheme is like the rectangle color scheme, but the four colors are evenly spaced on the color wheel.



18.2143, 4.7467, 2.5525



18.2143, -2.6607, 5.4159



18.2143, -6.0635, -0.7213



18.2143, 0.7788, -4.9285



# Rectangle

The Rectangle color scheme consists of four colors that form a rectangle on the color wheel.



18.2139, 4.7474, 2.5522



18.2143, 1.2307, 5.3058



18.2143, -6.0635, -0.7213



18.2143, -3.0764, -4.7322

# Sweetspot

The Sweet Spot groups the original color and five complimentary colors.



18.2143, 4.7467, 2.5525



28.5616, 0.7196, 2.1429



18.6314, 7.0626, -4.7979



14.4575, 0.4553, 1.1091



63.7533, -3.4017, 3.4638



15.6573, -0.8354, 0.8507



# Same Dimension

The Same Dimension uses a secret algorithm to generate beautiful new colors.



18.2143, 4.7467, 2.5525



22.5536, 8.2687, 3.8503



20.2188, 0.8682, 4.8937



11.5748, 0.2000, 0.8440



15.9578, 27.3946, 9.7965



39.9198, 68.4256, 25.3169



# Inverse Universe

The Inverse Universe completely reimagines the original color for something new.



18.2143, 4.7467, 2.5525



22.5536, 8.2687, 3.8503



19.7498, -2.2663, -3.3432



11.5748, 0.2000, 0.8440



15.9578, 27.3946, 9.7965

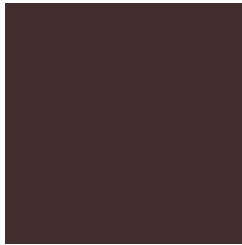


39.9198, 68.4256, 25.3169



# Previews

## White Background



This preview shows how the HunterLab color 18.2139, 4.7474, 2.5522 looks on a white background.

## Color Contrast Check

Large Text (above 18pt) WCAG AA ✓ Pass

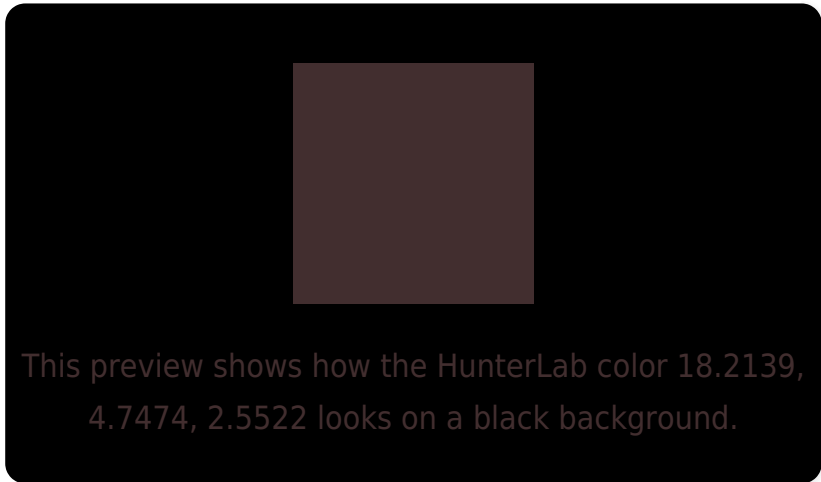
Any Text WCAG AA ✓ Pass

Large Text (above 18pt) WCAG AAA ✓ Pass

Any Text WCAG AAA ✓ Pass



# Black Background



## Color Contrast Check

Large Text (above 18pt) WCAG AA × Fail

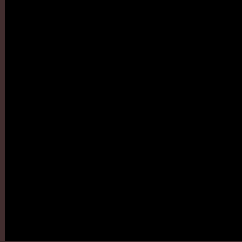
Any Text WCAG AA × Fail

Large Text (above 18pt) WCAG AAA × Fail

Any Text WCAG AAA × Fail

If you want to check with other color combinations, try the [Color Contrast Checker](#).

## HunterLab 18.2139, 4.7474, 2.5522 Background



This preview shows how black text looks on a background with the HunterLab color 18.2139, 4.7474, 2.5522.



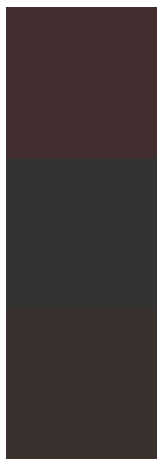
This preview shows how white text looks on a background with the HunterLab color 18.2139, 4.7474,



# Color Blindness Simulation

Color vision deficiency is a very complex topic, and I could not describe the different causes any better than Wikipedia does, so if you want to learn more, you should check out their [article about color blindness](#).

## Dichromacy



### Original Color

18.2139, 4.7474, 2.5522

### Protanopia

18.3162, -0.5974, 1.5078

### Deuteranopia

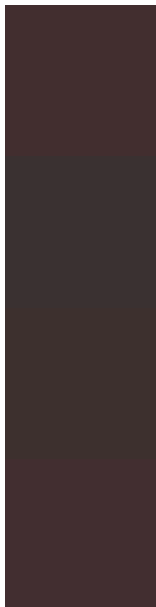
18.1478, 1.0577, 2.7565



## Tritanopia

18.2592, 4.9810, 1.9032

# Trichromacy



## Original Color

18.2139, 4.7474, 2.5522

## Protanomaly

18.2152, 1.4185, 1.7908

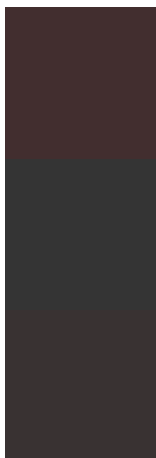
## Deuteranomaly

18.1749, 2.3185, 2.8078

## Tritanomaly

18.2363, 4.8630, 2.2309

# Monochromacy



## Original Color

18.2139, 4.7474, 2.5522

## Achromatopsia

18.5310, -0.9888, 1.0068

## Achromatomaly

18.3884, 0.8602, 1.6162

# CSS Examples

## Text

The CSS property to change the color of the text to HunterLab 18.2139, 4.7474, 2.5522 is called "color". The color property can be set on classes, ids or directly on the HTML element.

This example shows how text in the color `rgb(66, 46, 47)` looks like.

```
.text, #text, p{  
    color:rgb(66, 46, 47)  
}
```

If you want to add a text shadow in that color use the text-shadow property, you can generate a text shadow directly with our [CSS Text Shadow Generator](#).

Here you see how black text with a 4 pixel rgb(66, 46, 47) colored shadow looks like.

```
.shadow{ text-shadow: 4px 4px 2px rgb(66, 46, 47) }
```

## Border

The CSS property to change the border of an element to HunterLab 18.2139, 4.7474, 2.5522 is called "border".

The border property can be set on classes, ids or directly on the HTML element.

This example shows the color as border, it can be applied via the CSS property "border" or "border-color".

```
.border, #border, table{ border:4px solid rgb(66, 46, 47) }
```



If only the border color should be changed use the property `border-color`.

```
.border{ border-color:rgb(66, 46, 47) }
```

If you want to add a box shadow in that color use:

Here you see how a box with a 4 pixel `rgb(66, 46, 47)` colored shadow looks like.

```
.boxshadow{ -moz-box-shadow:4px 4px 4px  
4px rgb(66, 46, 47); -webkit-box-  
shadow:4px 4px 4px 4px rgb(66, 46, 47);  
box-shadow:4px 4px 4px 4px rgb(66, 46, 47)  
}
```

# Background

The CSS property to change the background color of an element to HunterLab 18.2139, 4.7474, 2.5522 is called "background". The background property can be set on classes, ids or directly on the HTML element.

```
.background, #background, body{  
background: rgb(66, 46, 47) }
```

If only the background color should be changed can be used:

```
.background{ background-color: rgb(66, 46,  
47) }
```

This example shows the color as background, it is applied via the CSS property "background".

To optimize and compress your CSS code, you can use our [online CSS compressor and optimizer](#) based on csstidy. If you want to create a linear or radial gradient as background or border, check our [CSS Gradient Generator](#).

Hey! You found this booklet interesting? Support Converting Colors with the new Membership Option!

The pro membership hides all ads, plus gives you double the colors in the color bucket, and more awesome pro features!

**[Learn more, Memberships starting at \\$2.50/m!](#)**

**Follow me  
on Twitter!**

@ConvertingColor