

Converting Colors

HunterLab(18.3777, 11.7090,
5.1348)

Have a look what the booklet for
HunterLab(18.3777, 11.7090,
5.1348) contains.

| | |
|--|----|
| HunterLab(18.3128, 11.8337, 4.9919) | 3 |
| <i>Conversions</i> | 4 |
| <i>Details</i> | 6 |
| <i>Harmonies</i> | 12 |
| <i>Previews</i> | 24 |
| <i>Color Blindness Simulation</i> | 28 |
| <i>CSS Examples</i> | 31 |

Color

**HunterLab(18.3128, 11.8337,
4.9919)**

Conversions

Conversions Part 1

| Format | Color |
|---------------|--------------------------|
| Hex | 512728 |
| RGB | 81, 39, 40 |
| RGB Percent | 32%, 15%, 16% |
| CMY | 0.6824, 0.8470, 0.8431 |
| CMYK | 0.00, 0.52, 0.51, 0.68 |
| HSL | 359°, 35%, 24% |
| HSV | 359°, 52%, 32% |
| XYZ | 4.5019, 3.3536, 2.4175 |
| YIQ | 51.6720, 24.7110, 9.2150 |

Conversions

Conversions Part 2

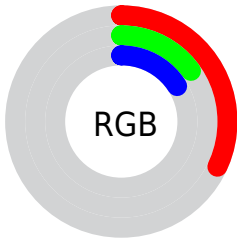
| Format | Color |
|-------------------------------------|------------------------------|
| R_{YB} | 81, 39, 40 |
| Decimal | 5318440 |
| CIE Lab | 21.41, 19.67, 8.28 |
| CIE LCh | 21, 21.339, 22.843 |
| Yxy | 3.3538, 0.4382, 0.3265 |
| Android (android.graphics.Color) | 4283508520 (0xFF512728) |
| YUV | 51.6720, -5.7543, 25.7207 |
| Hunter-Lab | 18.3128, 11.8337, 4.9919 |

Details

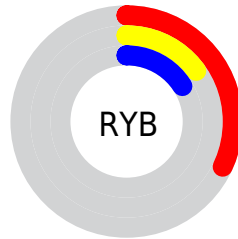
The HunterLab color **18.3128, 11.8337, 4.9919** is a dark color, and the websafe version is hex **663333**. A complement of this color would be **26.2592, -10.4206, -1.1385**, and the grayscale version is **18.4340, -0.9836, 1.0016**.

A 20% lighter version of the original color is **34.8417, 13.6259, 7.0829**, and **6.1243, 10.4880, 3.9574** is the 20% darker color. If you saturate the color by 10%, you get **16.8197, 14.5309, 5.7783**, and if you desaturate by 10%, it is **20.0081, 9.1073, 4.2315**.

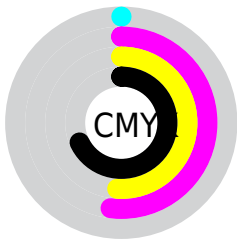
Distribution



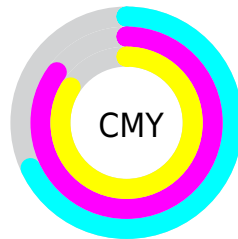
- Red (32%)
- Green (15%)
- Blue (16%)



- Red (32%)
- Yellow (15%)
- Blue (16%)



- Cyan (0%)
- Magenta (52%)
- Yellow (51%)
- Black (68%)



- Cyan (68%)
- Magenta (85%)
- Yellow (84%)

Brightness & Saturation Gradients

These gradients show how the HunterLab color 18.3128, 11.8337, 4.9919 changes by changing the brightness by 10 percent. The first figure shows a shift by +10% for each color and the second figure -10%.

Similar to the brightness gradients but the following saturation gradients show a change of the HunterLab color 18.3128, 11.8337, 4.9919 by changing the saturation by 10% instead.

■ 18.3128, 11.8337,
4.9919

■ 18.3128, 11.8337,
4.9919

■ 115.1092, 15.5916,
14.3597

■ 11.4852, 10.8267,
3.9304

■ 34.8157, 13.3719,
7.0793

■ 3.9486, 21.4907,
2.7640

■ 44.2979, 13.9501,
8.1008

0.0000, NaN, NaN

0.0000, NaN, NaN

■ 54.5123, 14.4239,
9.1219

0.0000, NaN, NaN

■ 65.4097, 14.8061,
10.1481

0.0000, NaN, NaN

■ 76.9498, 15.1067,
11.1829

0.0000, NaN, NaN

0.0000, NaN, NaN

■ 89.0984, 15.3336,

12.2288

0.0000, NaN, NaN

101.8267, 15.4934,
13.2874

18.3128, 11.8337,
4.9919

18.3128, 11.8337,
4.9919

16.8197, 14.5309,
5.7783

20.0081, 9.1073,
4.2315

15.5597, 17.0826,
6.5554

21.8740, 6.4269,
3.5141

14.5633, 19.3206,
7.2717

23.8851, 3.8269,
2.8468

13.8239, 21.1418,
7.8575

26.0198, 1.3201,
2.2297

13.2422, 22.7095,
8.3099

28.2604, -1.0940,
1.6592

■ 30.5928, -3.4223,
1.1305

■ 33.0055, -5.6742,
0.6385

■ 35.4892, -7.8601,
0.1780

■ 38.0364, -9.9894,
-0.2553

Harmonies

Analogous

The Analogous color harmony consists of three colors that are next to each other on the color wheel.



18.3133, 12.9386, -0.5261



18.3128, 11.8337, 4.9919



18.3133, 7.0838, 8.0997

Triad

The Triadic color harmony groups three colors that are evenly spaced from another and form a triangle on the color wheel.



18.3133, 11.8326, 4.9922



18.3133, -9.8088, 6.7624



18.3133, -2.4897, -14.8863

Complementary

The Complementary color scheme is a pair of colors which are on the opposite of each other on the color wheel.



18.3128, 11.8337, 4.9919



26.2592, -10.4206, -1.1385

Split Complementary

Split-complementary colors differ from the complementary color scheme. The scheme consists of three colors, the original color and two neighbors of the complement color.



18.3133, -7.8490, -11.0380



18.3128, 11.8337, 4.9919



18.3133, -11.6807, 2.3993

Square

The Square scheme is like the rectangle color scheme, but the four colors are evenly spaced on the color wheel.



18.3133, 11.8326, 4.9922



18.3133, -5.5251, 8.8487



18.3133, -11.0160, -4.1688



18.3133, 4.0609, -13.4494

Rectangle

The Rectangle color scheme consists of four colors that form a rectangle on the color wheel.



18.3128, 11.8337, 4.9919



18.3133, 2.8045, 9.0380



18.3133, -11.0160, -4.1688



18.3133, -4.4767, -14.1333

Sweetspot

The Sweet Spot groups the original color and five complimentary colors.



18.3133, 11.8326, 4.9922



32.6107, 3.2438, 3.2788



19.3221, 16.8615, -11.6858



16.4501, 1.8376, 1.7155



67.9972, -3.6282, 3.6944



19.0543, -1.0167, 1.0353

Same Dimension

The Same Dimension uses a secret algorithm to generate beautiful new colors.



18.3133, 11.8326, 4.9922



21.5347, 19.7369, 7.7713



22.3225, 3.3418, 8.7147



13.8040, 0.2882, 1.0580



17.2671, 29.6019, 10.9132



41.4442, 71.0037, 26.5543

Inverse Universe

The Inverse Universe completely reimagines the original color for something new.



18.3133, 11.8326, 4.9922



21.5347, 19.7369, 7.7713



20.9904, -2.6134, -9.1001



13.8040, 0.2882, 1.0580



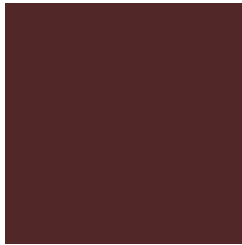
17.2671, 29.6019, 10.9132



41.4442, 71.0037, 26.5543

Previews

White Background



This preview shows how the HunterLab color 18.3128, 11.8337, 4.9919 looks on a white background.

Color Contrast Check

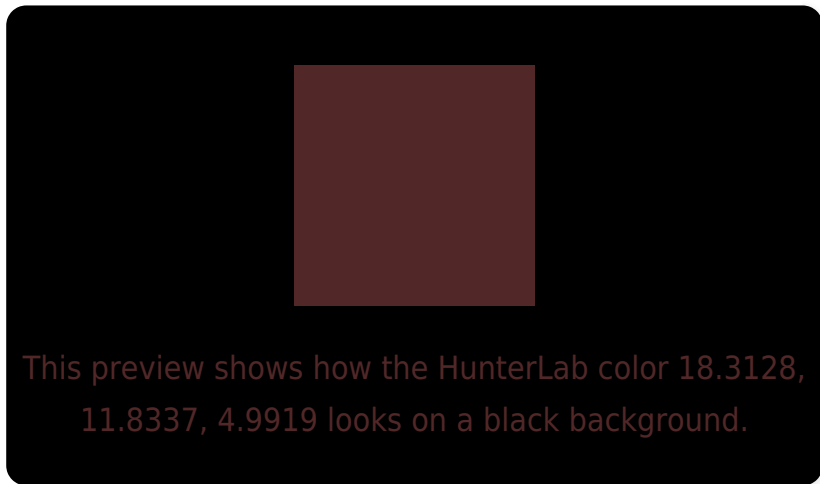
Large Text (above 18pt) WCAG AA ✓ Pass

Any Text WCAG AA ✓ Pass

Large Text (above 18pt) WCAG AAA ✓ Pass

Any Text WCAG AAA ✓ Pass

Black Background



Color Contrast Check

Large Text (above 18pt) WCAG AA × Fail

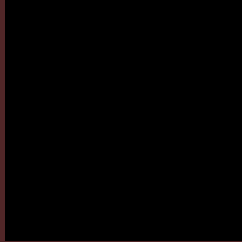
Any Text WCAG AA × Fail

Large Text (above 18pt) WCAG AAA × Fail

Any Text WCAG AAA × Fail

If you want to check with other color combinations, try the [Color Contrast Checker](#).

HunterLab 18.3128, 11.8337, 4.9919 Background



This preview shows how black text looks on a background with the HunterLab color 18.3128, 11.8337, 4.9919.



This preview shows how white text looks on a background with the HunterLab color 18.3128, 11.8337,

Color Blindness Simulation

Color vision deficiency is a very complex topic, and I could not describe the different causes any better than Wikipedia does, so if you want to learn more, you should check out their [article about color blindness](#).

Dichromacy



Original Color

18.3128, 11.8337, 4.9919

Protanopia

18.5405, -1.2290, 3.1373

Deuteranopia

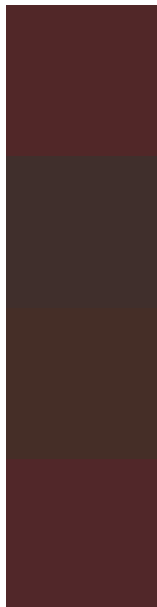
18.5615, 0.9553, 5.5968



Tritanopia

18.3316, 11.9236, 4.7196

Trichromacy



Original Color

18.3128, 11.8337, 4.9919

Protanomaly

18.1793, 3.3917, 3.4899

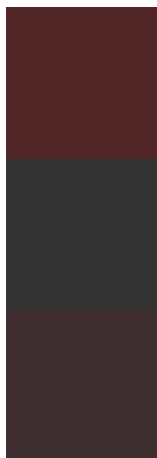
Deuteranomaly

18.3458, 4.8431, 5.1861

Tritanomaly

18.3316, 11.9236, 4.7196

Monochromacy



Original Color

18.3128, 11.8337, 4.9919

Achromatopsia

18.5310, -0.9888, 1.0068

Achromatomaly

18.1747, 3.5503, 2.1391

CSS Examples

Text

The CSS property to change the color of the text to HunterLab 18.3128, 11.8337, 4.9919 is called "color". The color property can be set on classes, ids or directly on the HTML element.

This example shows how text in the color `rgb(81, 39, 40)` looks like.

```
.text, #text, p{  
    color:rgb(81, 39, 40)  
}
```

If you want to add a text shadow in that color use the text-shadow property, you can generate a text shadow directly with our [CSS Text Shadow Generator](#).

Here you see how black text with a 4 pixel rgb(81, 39, 40) colored shadow looks like.

```
.shadow{ text-shadow: 4px 4px 2px rgb(81, 39, 40) }
```

Border

The CSS property to change the border of an element to HunterLab 18.3128, 11.8337, 4.9919 is called "border". The border property can be set on classes, ids or directly on the HTML element.

This example shows the color as border, it can be applied via the CSS property "border" or "border-color".

```
.border, #border, table{ border:4px solid rgb(81, 39, 40) }
```


If only the border color should be changed use the property `border-color`.

```
.border{ border-color:rgb(81, 39, 40) }
```

If you want to add a box shadow in that color use:

Here you see how a box with a 4 pixel `rgb(81, 39, 40)` colored shadow looks like.

```
.boxshadow{ -moz-box-shadow:4px 4px 4px  
4px rgb(81, 39, 40); -webkit-box-  
shadow:4px 4px 4px 4px rgb(81, 39, 40);  
box-shadow:4px 4px 4px 4px rgb(81, 39, 40)  
}
```

Background

The CSS property to change the background color of an element to HunterLab 18.3128, 11.8337, 4.9919 is called "background". The background property can be set on classes, ids or directly on the HTML element.

```
.background, #background, body{  
background: rgb(81, 39, 40) }
```

If only the background color should be changed can be used:

```
.background{ background-color: rgb(81, 39,  
40) }
```

This example shows the color as background, it is applied via the CSS property "background".

To optimize and compress your CSS code, you can use our [online CSS compressor and optimizer](#) based on csstidy. If you want to create a linear or radial gradient as background or border, check our [CSS Gradient Generator](#).

Hey! You found this booklet interesting? Support Converting Colors with the new Membership Option!

The pro membership hides all ads, plus gives you double the colors in the color bucket, and more awesome pro features!

[Learn more, Memberships starting at \\$2.50/m!](#)

**Follow me
on Twitter!**

@ConvertingColor