

Converting Colors

HunterLab(18.4141, 7.6611,
4.6042)

Have a look what the booklet for
HunterLab(18.4141, 7.6611, 4.6042)
contains.

HunterLab(18.4860, 7.4801, 4.7936)	3
<i>Conversions</i>	4
<i>Details</i>	6
<i>Harmonies</i>	12
<i>Previews</i>	24
<i>Color Blindness Simulation</i>	28
<i>CSS Examples</i>	31

Color

**HunterLab(18.4860, 7.4801,
4.7936)**

Conversions

Conversions Part 1

Format	Color
Hex	4A2C29
RGB	74, 44, 41
RGB Percent	29%, 17%, 16%
CMY	0.7098, 0.8274, 0.8392
CMYK	0.00, 0.41, 0.45, 0.71
HSL	5°, 29%, 23%
HSV	5°, 45%, 29%
XYZ	4.1250, 3.4173, 2.5400
YIQ	52.6280, 18.8430, 5.4270

Conversions

Conversions Part 2

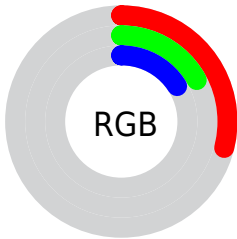
Format	Color
R_{YB}	74, 44, 41
Decimal	4860969
CIE _{Lab}	21.64, 13.45, 7.76
CIE _{LCh}	22, 15.530, 29.964
Yxy	3.4175, 0.4091, 0.3389
Android (android.graphics.Color)	4283051049 (0xFF4A2C29)
YUV	52.6280, -5.7326, 18.7432
Hunter-Lab	18.4860, 7.4801, 4.7936

Details

The HunterLab color **18.4860, 7.4801, 4.7936** is a dark color, and the websafe version is hex **663333**. A complement of this color would be **23.3925, -7.3343, -2.1345**, and the grayscale version is **18.7574, -1.0008, 1.0191**.

A 20% lighter version of the original color is **35.0276, 8.2521, 6.8259**, and **5.3973, 9.2430, 3.4876** is the 20% darker color. If you saturate the color by 10%, you get **17.0570, 9.6787, 5.5238**, and if you desaturate by 10%, it is **20.0415, 5.3440, 4.0418**.

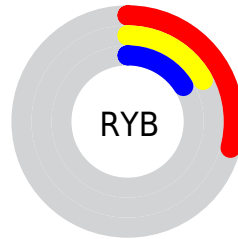
Distribution



Red (29%)

Green (17%)

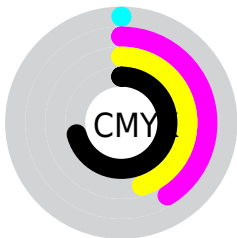
Blue (16%)



Red (29%)

Yellow (17%)

Blue (16%)

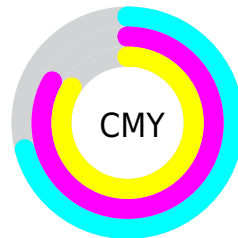


Cyan (0%)

Magenta (41%)

Yellow (45%)

Black (71%)



Cyan (71%)

Magenta (83%)

Yellow (84%)

Brightness & Saturation Gradients

These gradients show how the HunterLab color 18.4860, 7.4801, 4.7936 changes by changing the brightness by 10 percent. The first figure shows a shift by +10% for each color and the second figure -10%.

Similar to the brightness gradients but the following saturation gradients show a change of the HunterLab color 18.4860, 7.4801, 4.7936 by changing the saturation by 10% instead.

■ 18.4860, 7.4801,
4.7936

■ 18.4860, 7.4801,
4.7936

■ 115.4284, 8.5554,
13.8873

■ 11.6335, 6.8476,
3.7539

■ 35.0302, 8.3156,
6.7989

■ 4.2659, 13.5148,
2.9862

■ 44.5303, 8.5699,
7.7864

0.0000, NaN, NaN

0.0000, NaN, NaN

■ 54.7613, 8.7363,
8.7764

0.0000, NaN, NaN

■ 65.6742, 8.8257,
9.7740

0.0000, NaN, NaN

■ 77.2290, 8.8463,
10.7821

0.0000, NaN, NaN

0.0000, NaN, NaN

■ 89.3916, 8.8047,

11.8028

0.0000, NaN, NaN

102.1331, 8.7063,
12.8376

18.4860, 7.4801,
4.7936

18.4860, 7.4801,
4.7936

17.0570, 9.6787,
5.5238

20.0415, 5.3440,
4.0418

15.7731, 11.9043,
6.2098

21.7048, 3.2909,
3.2816

14.6565, 14.0892,
6.8216

23.4615, 1.3245,
2.5216

13.7288, 16.1338,
7.3217

25.2996, -0.5579,
1.7664

12.9989, 17.8780,
7.7989

27.2088, -2.3629,
1.0182

■ 12.6569, 18.7082,
8.1267

■ 29.1810, -4.0987,
0.2775

■ 31.2094, -5.7735,
-0.4558

■ 33.2882, -7.3953,
-1.1824

■ 35.4127, -8.9713,
-1.9031

Harmonies

Analogous

The Analogous color harmony consists of three colors that are next to each other on the color wheel.



18.4865, 8.9074, 1.0008



18.4860, 7.4801, 4.7936



18.4865, 3.7397, 6.9923

Triad

The Triadic color harmony groups three colors that are evenly spaced from another and form a triangle on the color wheel.



18.4865, 7.4792, 4.7939



18.4865, -8.1553, 4.8012



18.4865, -0.9931, -9.7736

Complementary

The Complementary color scheme is a pair of colors which are on the opposite of each other on the color wheel.



18.4860, 7.4801, 4.7936



23.3925, -7.3343, -2.1345

Split Complementary

Split-complementary colors differ from the complementary color scheme. The scheme consists of three colors, the original color and two neighbors of the complement color.



18.4865, -5.2825, -8.0522



18.4860, 7.4801, 4.7936



18.4865, -9.1584, 1.0117

Square

The Square scheme is like the rectangle color scheme, but the four colors are evenly spaced on the color wheel.



18.4865, 7.4792, 4.7939



18.4865, -5.2736, 6.9957



18.4865, -8.1601, -3.8040



18.4865, 3.7288, -8.0601

Rectangle

The Rectangle color scheme consists of four colors that form a rectangle on the color wheel.



18.4860, 7.4801, 4.7936



18.4865, 0.6084, 7.6104



18.4865, -8.1601, -3.8040



18.4865, -2.5308, -9.5728

Sweetspot

The Sweet Spot groups the original color and five complimentary colors.



18.4865, 7.4792, 4.7939



31.2228, 1.4732, 3.2195



18.7080, 12.7005, -7.2760



15.5283, 0.8989, 1.6794



65.8695, -3.5146, 3.5788



17.3419, -0.9253, 0.9422

Same Dimension

The Same Dimension uses a secret algorithm to generate beautiful new colors.



18.4865, 7.4792, 4.7939



22.2413, 13.2196, 7.4324



22.0770, 0.6057, 7.9803



13.1284, 0.1102, 1.1109



17.3960, 26.8154, 11.1888



41.5598, 67.8837, 26.7974

Inverse Universe

The Inverse Universe completely reimagines the original color for something new.



23.3925, -7.3343, -2.1345



30.1464, -10.9779, -3.8104



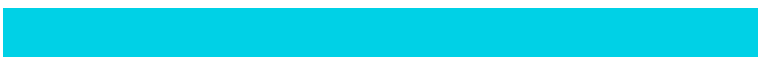
19.1691, -0.9092, -8.2422



13.6707, -1.4959, 0.3527



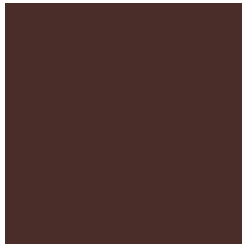
29.5621, -13.7646, -7.2362



71.4851, -32.9067, -18.3140

Previews

White Background



This preview shows how the HunterLab color 18.4860, 7.4801, 4.7936 looks on a white background.

Color Contrast Check

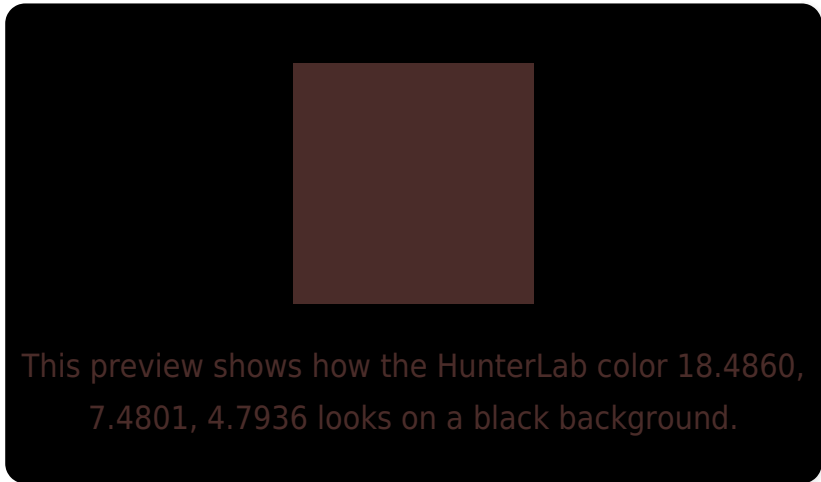
Large Text (above 18pt) WCAG AA ✓ Pass

Any Text WCAG AA ✓ Pass

Large Text (above 18pt) WCAG AAA ✓ Pass

Any Text WCAG AAA ✓ Pass

Black Background



Color Contrast Check

Large Text (above 18pt) WCAG AA × Fail

Any Text WCAG AA × Fail

Large Text (above 18pt) WCAG AAA × Fail

Any Text WCAG AAA × Fail

If you want to check with other color combinations, try the [Color Contrast Checker](#).

HunterLab 18.4860, 7.4801, 4.7936 Background



This preview shows how black text looks on a background with the HunterLab color 18.4860, 7.4801, 4.7936.

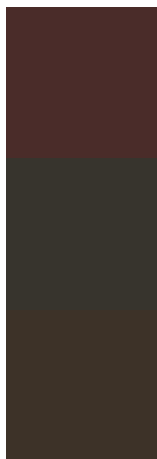


This preview shows how white text looks on a background with the HunterLab color 18.4860, 7.4801,

Color Blindness Simulation

Color vision deficiency is a very complex topic, and I could not describe the different causes any better than Wikipedia does, so if you want to learn more, you should check out their [article about color blindness](#).

Dichromacy



Original Color

18.4860, 7.4801, 4.7936

Protanopia

18.5948, -1.0816, 3.5232

Deuteranopia

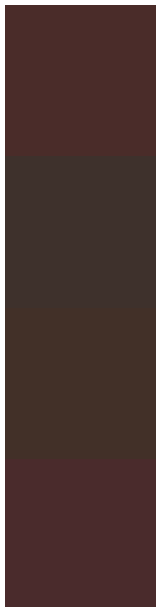
18.5108, 0.8559, 4.9913



Tritanopia

18.3871, 8.4118, 3.1426

Trichromacy



Original Color

18.4860, 7.4801, 4.7936

Protanomaly

18.4462, 1.9707, 3.7419

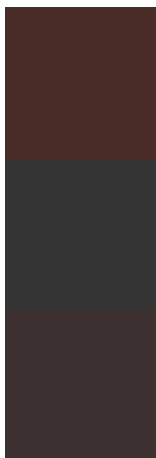
Deuteranomaly

18.5077, 3.1685, 5.0288

Tritanomaly

18.3452, 8.2032, 3.7466

Monochromacy



Original Color

18.4860, 7.4801, 4.7936

Achromatopsia

18.8683, -1.0068, 1.0252

Achromatomaly

18.6951, 1.8420, 2.3368

CSS Examples

Text

The CSS property to change the color of the text to HunterLab 18.4860, 7.4801, 4.7936 is called "color". The color property can be set on classes, ids or directly on the HTML element.

This example shows how text in the color `rgb(74, 44, 41)` looks like.

```
.text, #text, p{  
    color:rgb(74, 44, 41)  
}
```

If you want to add a text shadow in that color use the text-shadow property, you can generate a text shadow directly with our [CSS Text Shadow Generator](#).

Here you see how black text with a 4 pixel rgb(74, 44, 41) colored shadow looks like.

```
.shadow{ text-shadow: 4px 4px 2px rgb(74, 44, 41) }
```

Border

The CSS property to change the border of an element to HunterLab 18.4860, 7.4801, 4.7936 is called "border".

The border property can be set on classes, ids or directly on the HTML element.

This example shows the color as border, it can be applied via the CSS property "border" or "border-color".

```
.border, #border, table{ border:4px solid rgb(74, 44, 41) }
```


If only the border color should be changed use the property border-color.

```
.border{ border-color:rgb(74, 44, 41) }
```

If you want to add a box shadow in that color use:

Here you see how a box with a 4 pixel rgb(74, 44, 41) colored shadow looks like.

```
.boxshadow{ -moz-box-shadow:4px 4px 4px  
4px rgb(74, 44, 41); -webkit-box-  
shadow:4px 4px 4px 4px rgb(74, 44, 41);  
box-shadow:4px 4px 4px 4px rgb(74, 44, 41)  
}
```

Background

The CSS property to change the background color of an element to HunterLab 18.4860, 7.4801, 4.7936 is called "background". The background property can be set on classes, ids or directly on the HTML element.

```
.background, #background, body{  
background: rgb(74, 44, 41) }
```

If only the background color should be changed can be used:

```
.background{ background-color: rgb(74, 44,  
41) }
```

This example shows the color as background, it is applied via the CSS property "background".

To optimize and compress your CSS code, you can use our [online CSS compressor and optimizer](#) based on csstidy. If you want to create a linear or radial gradient as background or border, check our [CSS Gradient Generator](#).

Hey! You found this booklet interesting? Support Converting Colors with the new Membership Option!

The pro membership hides all ads, plus gives you double the colors in the color bucket, and more awesome pro features!

[Learn more, Memberships starting at \\$2.50/m!](#)

**Follow me
on Twitter!**

@ConvertingColor