

Converting Colors

HunterLab(18.4164, 7.4855,
3.8393)

Have a look what the booklet for
HunterLab(18.4164, 7.4855, 3.8393)
contains.

HunterLab(18.4382, 7.4538, 3.8297)	3
<i>Conversions</i>	4
<i>Details</i>	6
<i>Harmonies</i>	12
<i>Previews</i>	24
<i>Color Blindness Simulation</i>	28
<i>CSS Examples</i>	31

Color

**HunterLab(18.4382, 7.4538,
3.8297)**

Conversions

Conversions Part 1

Format	Color
Hex	492C2C
RGB	73, 44, 44
RGB Percent	29%, 17%, 17%
CMY	0.7137, 0.8274, 0.8275
CMYK	0.00, 0.40, 0.40, 0.71
HSL	0°, 25%, 23%
HSV	0°, 40%, 29%
XYZ	4.1030, 3.3997, 2.8228
YIQ	52.6710, 17.2840, 6.1480

Conversions

Conversions Part 2

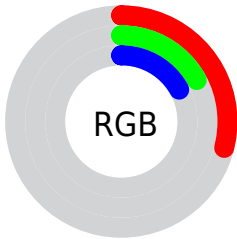
Format	Color
R_YB	73, 44, 44
Decimal	4795436
CIE Lab	21.58, 13.42, 5.60
CIE LCh	22, 14.541, 22.641
Yxy	3.3998, 0.3974, 0.3293
Android (android.graphics.Color)	4282985516 (0xFF492C2C)
YUV	52.6710, -4.2748, 17.8285
Hunter-Lab	18.4382, 7.4538, 3.8297

Details

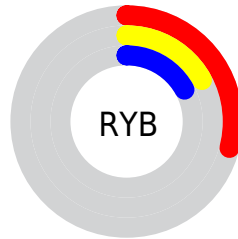
The HunterLab color **18.4382, 7.4538, 3.8297** is a dark color, and the websafe version is hex **663333**. A complement of this color would be **24.0445, -7.7524, -0.8627**, and the grayscale version is **18.7674, -1.0014, 1.0197**.

A 20% lighter version of the original color is **34.9922, 8.2804, 5.6931**, and **5.2538, 8.9972, 3.3948** is the 20% darker color. If you saturate the color by 10%, you get **16.8904, 9.8529, 4.5227**, and if you desaturate by 10%, it is **20.1302, 5.1085, 3.1663**.

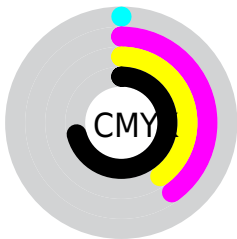
Distribution



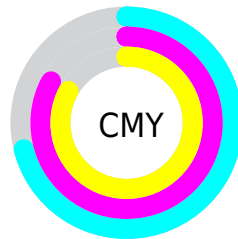
- Red (29%)
- Green (17%)
- Blue (17%)



- Red (29%)
- Yellow (17%)
- Blue (17%)



- Cyan (0%)
- Magenta (40%)
- Yellow (40%)
- Black (71%)



- Cyan (71%)
- Magenta (83%)
- Yellow (83%)

Brightness & Saturation Gradients

These gradients show how the HunterLab color 18.4382, 7.4538, 3.8297 changes by changing the brightness by 10 percent. The first figure shows a shift by +10% for each color and the second figure -10%.

Similar to the brightness gradients but the following saturation gradients show a change of the HunterLab color 18.4382, 7.4538, 3.8297 by changing the saturation by 10% instead.

■ 18.4382, 7.4538,
3.8297

■ 18.4382, 7.4538,
3.8297

■ 115.3404, 8.5191,
11.8195

■ 11.5925, 6.8224,
2.9751

■ 34.9710, 8.2870,
5.5113

■ 4.1808, 13.7643,
2.9266

■ 44.4662, 8.5401,
6.3622

0.0000, NaN, NaN

0.0000, NaN, NaN

■ 54.6926, 8.7054,
7.2270

0.0000, NaN, NaN

■ 65.6013, 8.7936,
8.1083

0.0000, NaN, NaN

■ 77.1519, 8.8131,
9.0076

0.0000, NaN, NaN

0.0000, NaN, NaN

■ 89.3107, 8.7705,

102.0486, 8.6710,
10.8628

18.4382, 7.4538,
3.8297

18.4382, 7.4538,
3.8297

16.8904, 9.8529,
4.5227

20.1302, 5.1085,
3.1663

15.5106, 12.2575,
5.2290

21.9435, 2.8431,
2.5379

14.3268, 14.5775,
5.9210

23.8610, 0.6633,
1.9456

13.3661, 16.6805,
6.5564

25.8682, -1.4337,
1.3875

12.6325, 18.4495,
7.0963

27.9533, -3.4551,
0.8604

■ 11.9221, 20.3247,
7.6735

■ 30.1070, -5.4097,
0.3607

■ 11.9020, 20.3803,
7.6907

■ 32.3214, -7.3066,
-0.1154

■ 34.5904, -9.1541,
-0.5710

■ 36.9087, -10.9599,
-1.0090

Harmonies

Analogous

The Analogous color harmony consists of three colors that are next to each other on the color wheel.



18.4386, 8.1368, -0.0526



18.4382, 7.4538, 3.8297



18.4386, 4.4110, 6.3051

Triad

The Triadic color harmony groups three colors that are evenly spaced from another and form a triangle on the color wheel.



18.4386, 7.4529, 3.8300



18.4386, -7.2150, 5.2346



18.4386, -2.0516, -8.8452

Complementary

The Complementary color scheme is a pair of colors which are on the opposite of each other on the color wheel.



18.4382, 7.4538, 3.8297



24.0445, -7.7524, -0.8627

Split Complementary

Split-complementary colors differ from the complementary color scheme. The scheme consists of three colors, the original color and two neighbors of the complement color.



18.4386, -5.8237, -6.5706



18.4382, 7.4538, 3.8297



18.4386, -8.6186, 2.0010

Square

The Square scheme is like the rectangle color scheme, but the four colors are evenly spaced on the color wheel.



18.4386, 7.4529, 3.8300



18.4386, -4.1173, 6.9741



18.4386, -8.1341, -2.3558



18.4386, 2.3718, -8.0311

Rectangle

The Rectangle color scheme consists of four colors that form a rectangle on the color wheel.



18.4382, 7.4538, 3.8297



18.4386, 1.5967, 7.1315



18.4386, -8.1341, -2.3558



18.4386, -3.4317, -8.4013

Sweetspot

The Sweet Spot groups the original color and five complimentary colors.



18.4386, 7.4529, 3.8300



30.3547, 1.6260, 2.7373



19.2325, 11.3656, -7.3820



15.6096, 0.9106, 1.4326



65.8695, -3.5146, 3.5788



17.3419, -0.9253, 0.9422

Same Dimension

The Same Dimension uses a secret algorithm to generate beautiful new colors.



18.4386, 7.4529, 3.8300



21.9603, 12.8491, 5.8932



21.6220, 1.2981, 6.8119



12.3075, 0.2117, 0.9598



16.3652, 28.0238, 10.5748



40.4018, 69.1874, 26.1067

Inverse Universe

The Inverse Universe completely reimagines the original color for something new.



24.0445, -7.7524, -0.8627



30.8808, -11.6177, -1.6650



20.2319, -2.0586, -6.0413



12.9552, -1.5162, 0.4273



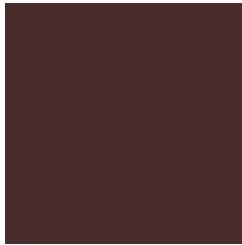
31.4920, -16.6943, -3.3241



77.7472, -41.2145, -8.2069

Previews

White Background



This preview shows how the HunterLab color 18.4382, 7.4538, 3.8297 looks on a white background.

Color Contrast Check

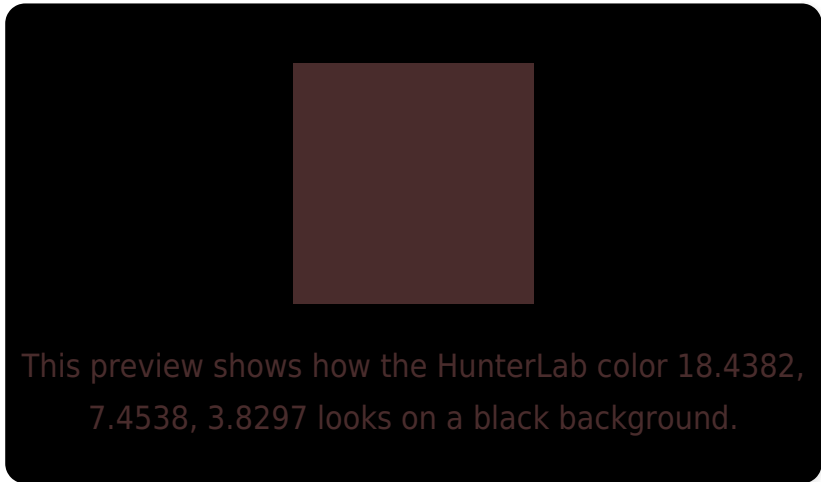
Large Text (above 18pt) WCAG AA ✓ Pass

Any Text WCAG AA ✓ Pass

Large Text (above 18pt) WCAG AAA ✓ Pass

Any Text WCAG AAA ✓ Pass

Black Background



Color Contrast Check

Large Text (above 18pt) WCAG AA × Fail

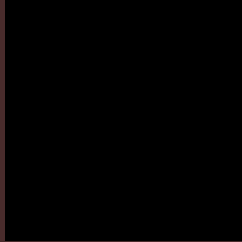
Any Text WCAG AA × Fail

Large Text (above 18pt) WCAG AAA × Fail

Any Text WCAG AAA × Fail

If you want to check with other color combinations, try the [Color Contrast Checker](#).

HunterLab 18.4382, 7.4538, 3.8297 Background



This preview shows how black text looks on a background with the HunterLab color 18.4382, 7.4538, 3.8297.

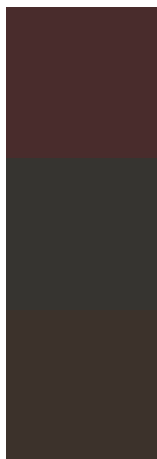


This preview shows how white text looks on a background with the HunterLab color 18.4382, 7.4538,

Color Blindness Simulation

Color vision deficiency is a very complex topic, and I could not describe the different causes any better than Wikipedia does, so if you want to learn more, you should check out their [article about color blindness](#).

Dichromacy



Original Color

18.4382, 7.4538, 3.8297

Protanopia

18.5840, -0.9905, 2.5128

Deuteranopia

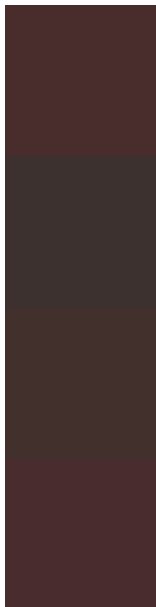
18.4832, 0.8772, 4.0732



Tritanopia

18.5015, 7.7711, 2.9184

Trichromacy



Original Color

18.4382, 7.4538, 3.8297

Protanomaly

18.4227, 2.0198, 2.7323

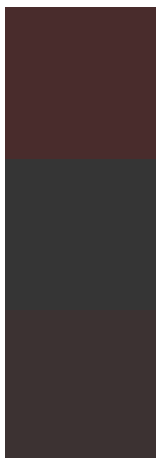
Deuteranomaly

18.4720, 3.1670, 4.1020

Tritanomaly

18.4800, 7.6631, 3.2286

Monochromacy



Original Color

18.4382, 7.4538, 3.8297

Achromatopsia

18.8683, -1.0068, 1.0252

Achromatomaly

18.6337, 1.6834, 1.9098

CSS Examples

Text

The CSS property to change the color of the text to HunterLab 18.4382, 7.4538, 3.8297 is called "color". The color property can be set on classes, ids or directly on the HTML element.

This example shows how text in the color `rgb(73, 44, 44)` looks like.

```
.text, #text, p{  
    color:rgb(73, 44, 44)  
}
```

If you want to add a text shadow in that color use the text-shadow property, you can generate a text shadow directly with our [CSS Text Shadow Generator](#).

Here you see how black text with a 4 pixel rgb(73, 44, 44) colored shadow looks like.

```
.shadow{ text-shadow: 4px 4px 2px rgb(73, 44, 44) }
```

Border

The CSS property to change the border of an element to HunterLab 18.4382, 7.4538, 3.8297 is called "border".

The border property can be set on classes, ids or directly on the HTML element.

This example shows the color as border, it can be applied via the CSS property "border" or "border-color".

```
.border, #border, table{ border:4px solid rgb(73, 44, 44) }
```


If only the border color should be changed use the property border-color.

```
.border{ border-color:rgb(73, 44, 44) }
```

If you want to add a box shadow in that color use:

Here you see how a box with a 4 pixel rgb(73, 44, 44) colored shadow looks like.

```
.boxshadow{ -moz-box-shadow:4px 4px 4px  
4px rgb(73, 44, 44); -webkit-box-  
shadow:4px 4px 4px 4px rgb(73, 44, 44);  
box-shadow:4px 4px 4px 4px rgb(73, 44, 44)  
}
```

Background

The CSS property to change the background color of an element to HunterLab 18.4382, 7.4538, 3.8297 is called "background". The background property can be set on classes, ids or directly on the HTML element.

```
.background, #background, body{  
background: rgb(73, 44, 44) }
```

If only the background color should be changed can be used:

```
.background{ background-color: rgb(73, 44,  
44) }
```

This example shows the color as background, it is applied via the CSS property "background".

To optimize and compress your CSS code, you can use our [online CSS compressor and optimizer](#) based on csstidy. If you want to create a linear or radial gradient as background or border, check our [CSS Gradient Generator](#).

Hey! You found this booklet interesting? Support Converting Colors with the new Membership Option!

The pro membership hides all ads, plus gives you double the colors in the color bucket, and more awesome pro features!

[Learn more, Memberships starting at \\$2.50/m!](#)

**Follow me
on Twitter!**

@ConvertingColor