

Converting Colors

HunterLab(18.4338, 6.6073,
1.3066)

Have a look what the booklet for
HunterLab(18.4338, 6.6073, 1.3066)
contains.

HunterLab(18.3875, 6.5572, 1.3461)	3
<i>Conversions</i>	4
<i>Details</i>	6
<i>Harmonies</i>	12
<i>Previews</i>	24
<i>Color Blindness Simulation</i>	28
<i>CSS Examples</i>	31

Color

**HunterLab(18.3875, 6.5572,
1.3461)**

Conversions

Conversions Part 1

Format	Color
Hex	452D33
RGB	69, 45, 51
RGB Percent	27%, 18%, 20%
CMY	0.7294, 0.8235, 0.8000
CMYK	0.00, 0.35, 0.26, 0.73
HSL	345°, 21%, 22%
HSV	345°, 35%, 27%
XYZ	3.9902, 3.3810, 3.5743
YIQ	52.8600, 12.3780, 6.9540

Conversions

Conversions Part 2

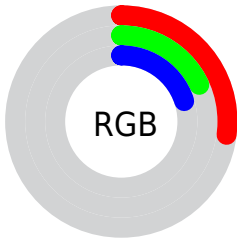
Format	Color
RYB	69, 45, 51
Decimal	4533555
CIE Lab	21.51, 12.10, 0.63
CIE LCh	22, 12.112, 2.999
Yxy	3.3812, 0.3645, 0.3089
Android (android.graphics.Color)	4282723635 (0xFF452D33)
YUV	52.8600, -0.9170, 14.1548
Hunter-Lab	18.3875, 6.5572, 1.3461

Details

The HunterLab color **18.3875, 6.5572, 1.3461** is a dark color, and the websafe version is hex **333333**. A complement of this color would be **22.7444, -7.5656, 1.6232**, and the grayscale version is **18.8215, -1.0043, 1.0226**.

A 20% lighter version of the original color is **34.9239, 7.2186, 2.4467**, and **5.0777, 8.9116, 1.6084** is the 20% darker color. If you saturate the color by 10%, you get **16.8933, 8.9014, 1.5571**, and if you desaturate by 10%, it is **19.9993, 4.2370, 1.2390**.

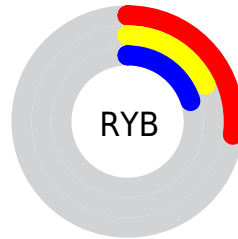
Distribution



 Red (27%)

 Green (18%)

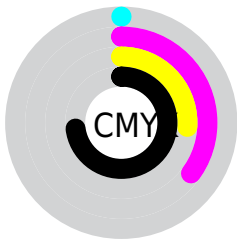
 Blue (20%)



 Red (27%)

 Yellow (18%)

 Blue (20%)

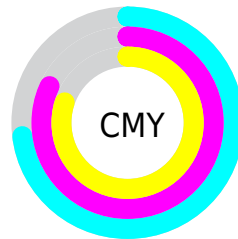


 Cyan (0%)

 Magenta (35%)

 Yellow (26%)

 Black (73%)



 Cyan (73%)

 Magenta (82%)

 Yellow (80%)

Brightness & Saturation Gradients

These gradients show how the HunterLab color 18.3875, 6.5572, 1.3461 changes by changing the brightness by 10 percent. The first figure shows a shift by +10% for each color and the second figure -10%.

Similar to the brightness gradients but the following saturation gradients show a change of the HunterLab color 18.3875, 6.5572, 1.3461 by changing the saturation by 10% instead.

■ 18.3875, 6.5572,
1.3461

■ 18.3875, 6.5572,
1.3461

■ 115.2469, 7.0400,
6.9147

■ 11.5491, 6.0118,
0.9235

■ 34.9082, 7.2351,
2.3295

■ 4.0885, 12.6730,
0.8650

■ 44.3981, 7.4177,
2.8823

0.0000, NaN, NaN

0.0000, NaN, NaN

■ 54.6197, 7.5164,
3.4723

0.0000, NaN, NaN

■ 65.5238, 7.5414,
4.0974

0.0000, NaN, NaN

■ 77.0702, 7.5006,
4.7556

0.0000, NaN, NaN

0.0000, NaN, NaN

■ 89.2249, 7.4002,

5.4455

0.0000, NaN, NaN

101.9589, 7.2453,
6.1656

18.3875, 6.5572,
1.3461

18.3875, 6.5572,
1.3461

16.8933, 8.9014,
1.5571

19.9993, 4.2370,
1.2390

15.5352, 11.2323,
1.8848

21.7107, 1.9628,
1.2199

14.3359, 13.4812,
2.3396

23.5085, -0.2587,
1.2758

13.3190, 15.5461,
2.9219

25.3814, -2.4272,
1.3948

12.5060, 17.2955,
3.6154

27.3203, -4.5462,
1.5671

■ 11.8056, 18.9416,
4.2944

■ 29.3175, -6.6208,
1.7847

■ 11.4301, 19.9352,
4.5885

■ 31.3670, -8.6566,
2.0407

■ 33.4636, -10.6593,
2.3299

■ 35.6031, -12.6339,
2.6476

Harmonies

Analogous

The Analogous color harmony consists of three colors that are next to each other on the color wheel.



18.3879, 5.6912, -2.2919



18.3875, 6.5572, 1.3461



18.3879, 5.2753, 4.2754

Triad

The Triadic color harmony groups three colors that are evenly spaced from another and form a triangle on the color wheel.



18.3879, 6.5565, 1.3465



18.3879, -4.6470, 5.7620



18.3879, -4.0582, -5.9886

Complementary

The Complementary color scheme is a pair of colors which are on the opposite of each other on the color wheel.



18.3875, 6.5572, 1.3461



22.7444, -7.5656, 1.6232

Split Complementary

Split-complementary colors differ from the complementary color scheme. The scheme consists of three colors, the original color and two neighbors of the complement color.



18.3879, -6.5006, -3.0147



18.3875, 6.5572, 1.3461



18.3879, -6.8215, 3.7788

Square

The Square scheme is like the rectangle color scheme, but the four colors are evenly spaced on the color wheel.



18.3879, 6.5565, 1.3465



18.3879, -1.3475, 6.4934



18.3879, -7.4731, 0.6485



18.3879, -0.6139, -6.9830

Rectangle

The Rectangle color scheme consists of four colors that form a rectangle on the color wheel.



18.3875, 6.5572, 1.3461



18.3879, 3.4306, 5.5705



18.3879, -7.4731, 0.6485



18.3879, -5.0143, -5.1621

Sweetspot

The Sweet Spot groups the original color and five complimentary colors.



18.3879, 6.5565, 1.3465



29.2215, 1.2771, 1.6059



18.3395, 7.4473, -6.7710



15.1267, 0.7642, 0.8335



64.8100, -3.4581, 3.5212



16.4960, -0.8802, 0.8963

Same Dimension

The Same Dimension uses a secret algorithm to generate beautiful new colors.



18.3879, 6.5565, 1.3465



22.1578, 11.2293, 1.9858



19.5512, 3.3261, 4.5763



12.3275, 0.3201, 0.6736



16.5760, 28.8067, 7.4574



40.7621, 70.5243, 20.7734

Inverse Universe

The Inverse Universe completely reimagines the original color for something new.



18.3879, 6.5565, 1.3465



22.1578, 11.2293, 1.9858



21.3136, -4.3518, -2.6050



12.3275, 0.3201, 0.6736



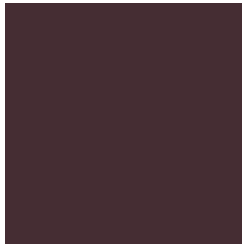
16.5760, 28.8067, 7.4574



40.7621, 70.5243, 20.7734

Previews

White Background



This preview shows how the HunterLab color 18.3875, 6.5572, 1.3461 looks on a white background.

Color Contrast Check

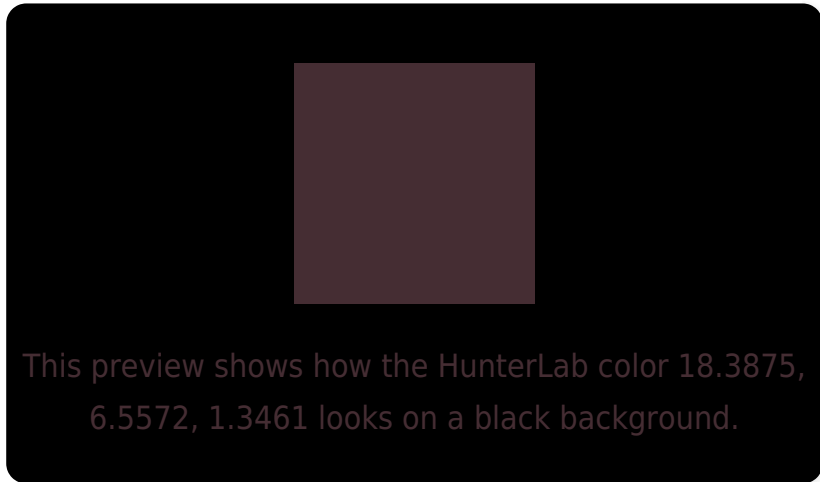
Large Text (above 18pt) WCAG AA ✓ Pass

Any Text WCAG AA ✓ Pass

Large Text (above 18pt) WCAG AAA ✓ Pass

Any Text WCAG AAA ✓ Pass

Black Background



Color Contrast Check

Large Text (above 18pt) WCAG AA × Fail

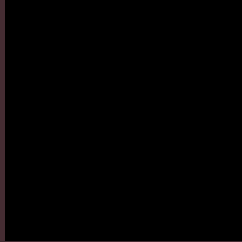
Any Text WCAG AA × Fail

Large Text (above 18pt) WCAG AAA × Fail

Any Text WCAG AAA × Fail

If you want to check with other color combinations, try the [Color Contrast Checker](#).

HunterLab 18.3875, 6.5572, 1.3461 Background



This preview shows how black text looks on a background with the HunterLab color 18.3875, 6.5572, 1.3461.

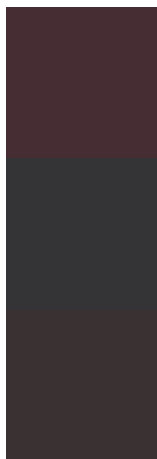


This preview shows how white text looks on a background with the HunterLab color 18.3875, 6.5572,

Color Blindness Simulation

Color vision deficiency is a very complex topic, and I could not describe the different causes any better than Wikipedia does, so if you want to learn more, you should check out their [article about color blindness](#).

Dichromacy



Original Color

18.3875, 6.5572, 1.3461

Protanopia

18.6061, -0.5780, -0.0628

Deuteranopia

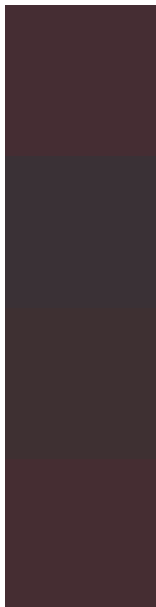
18.4690, 1.1317, 1.7130



Tritanopia

18.3405, 6.3187, 2.0185

Trichromacy



Original Color

18.3875, 6.5572, 1.3461

Protanomaly

18.3371, 2.0687, 0.0511

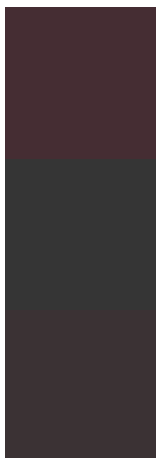
Deuteranomaly

18.3530, 3.0831, 1.6145

Tritanomaly

18.3637, 6.4368, 1.6855

Monochromacy



Original Color

18.3875, 6.5572, 1.3461

Achromatopsia

18.8683, -1.0068, 1.0252

Achromatomaly

18.5982, 1.6599, 1.1322

CSS Examples

Text

The CSS property to change the color of the text to HunterLab 18.3875, 6.5572, 1.3461 is called "color". The color property can be set on classes, ids or directly on the HTML element.

This example shows how text in the color `rgb(69, 45, 51)` looks like.

```
.text, #text, p{  
    color:rgb(69, 45, 51)  
}
```

If you want to add a text shadow in that color use the text-shadow property, you can generate a text shadow directly with our [CSS Text Shadow Generator](#).

Here you see how black text with a 4 pixel rgb(69, 45, 51) colored shadow looks like.

```
.shadow{ text-shadow: 4px 4px 2px rgb(69, 45, 51) }
```

Border

The CSS property to change the border of an element to HunterLab 18.3875, 6.5572, 1.3461 is called "border". The border property can be set on classes, ids or directly on the HTML element.

This example shows the color as border, it can be applied via the CSS property "border" or "border-color".

```
.border, #border, table{ border:4px solid rgb(69, 45, 51) }
```


If only the border color should be changed use the property border-color.

```
.border{ border-color:rgb(69, 45, 51) }
```

If you want to add a box shadow in that color use:

Here you see how a box with a 4 pixel rgb(69, 45, 51) colored shadow looks like.

```
.boxshadow{ -moz-box-shadow:4px 4px 4px  
4px rgb(69, 45, 51); -webkit-box-  
shadow:4px 4px 4px 4px rgb(69, 45, 51);  
box-shadow:4px 4px 4px 4px rgb(69, 45, 51)  
}
```

Background

The CSS property to change the background color of an element to HunterLab 18.3875, 6.5572, 1.3461 is called "background". The background property can be set on classes, ids or directly on the HTML element.

```
.background, #background, body{  
background: rgb(69, 45, 51) }
```

If only the background color should be changed can be used:

```
.background{ background-color: rgb(69, 45,  
51) }
```

This example shows the color as background, it is applied via the CSS property "background".

To optimize and compress your CSS code, you can use our [online CSS compressor and optimizer](#) based on csstidy. If you want to create a linear or radial gradient as background or border, check our [CSS Gradient Generator](#).

Hey! You found this booklet
interesting? Support Converting
Colors with the new Membership
Option!

The pro membership hides all ads, plus gives you
double the colors in the color bucket, and more
awesome pro features!

[Learn more, Memberships starting at \\$2.50/m!](#)

**Follow me
on Twitter!**

@ConvertingColor