

Converting Colors

HunterLab(18.4659, 2.1434,
6.2408)

Have a look what the booklet for
HunterLab(18.4659, 2.1434, 6.2408)
contains.

HunterLab(18.5521, 1.9951, 6.3848)	3
<i>Conversions</i>	4
<i>Details</i>	6
<i>Harmonies</i>	12
<i>Previews</i>	24
<i>Color Blindness Simulation</i>	28
<i>CSS Examples</i>	31

Color

**HunterLab(18.5521, 1.9951,
6.3848)**

Conversions

Conversions Part 1

Format	Color
Hex	413123
RGB	65, 49, 35
RGB Percent	25%, 19%, 14%
CMY	0.7451, 0.8078, 0.8627
CMYK	0.00, 0.25, 0.46, 0.75
HSL	28°, 30%, 20%
HSV	28°, 46%, 25%
XYZ	3.5817, 3.4418, 2.0657
YIQ	52.1880, 14.0300, -0.9620

Conversions

Conversions Part 2

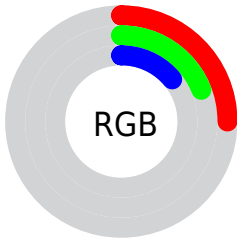
Format	Color
RYB	65, 61, 35
Decimal	4272419
CIELab	21.73, 4.99, 11.72
CIElCh	22, 12.733, 66.941
Yxy	3.4420, 0.3941, 0.3787
Android (android.graphics.Color)	4282462499 (0xFF413123)
YUV	52.1880, -8.4737, 11.2361
Hunter-Lab	18.5521, 1.9951, 6.3848

Details

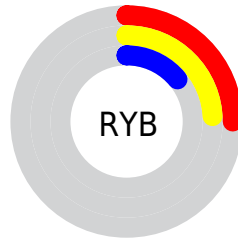
The HunterLab color **18.5521, 1.9951, 6.3848** is a dark color, and the websafe version is hex **333333**. A complement of this color would be **17.6254, -2.1729, -6.0003**, and the grayscale version is **18.6190, -0.9935, 1.0116**.

A 20% lighter version of the original color is **35.1298, 1.9338, 8.8717**, and **4.3834, 4.9611, 2.7879** is the 20% darker color. If you saturate the color by 10%, you get **17.6861, 2.9059, 7.1598**, and if you desaturate by 10%, it is **19.4562, 1.1634, 5.4758**.

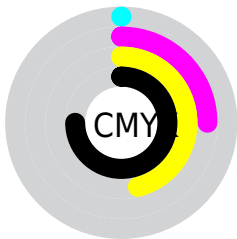
Distribution



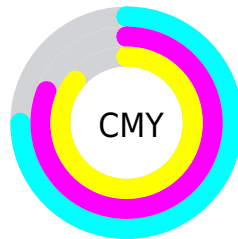
- Red (25%)
- Green (19%)
- Blue (14%)



- Red (25%)
- Yellow (24%)
- Blue (14%)



- Cyan (0%)
- Magenta (25%)
- Yellow (46%)
- Black (75%)



- Cyan (75%)
- Magenta (81%)
- Yellow (86%)

Brightness & Saturation Gradients

These gradients show how the HunterLab color 18.5521, 1.9951, 6.3848 changes by changing the brightness by 10 percent. The first figure shows a shift by +10% for each color and the second figure -10%.

Similar to the brightness gradients but the following saturation gradients show a change of the HunterLab color 18.5521, 1.9951, 6.3848 by changing the saturation by 10% instead.

■ 18.5521, 1.9951,
6.3848

■ 18.5521, 1.9951,
6.3848

■ 115.5501, -0.7958,
17.5724

■ 11.6901, 1.9630,
5.1640

■ 35.1119, 1.7785,
9.0098

■ 4.3807, 4.7269,
3.0665

■ 44.6188, 1.5630,
10.2572

0.0000, NaN, NaN

0.0000, NaN, NaN

■ 54.8561, 1.2882,
11.4848

0.0000, NaN, NaN

■ 65.7750, 0.9606,
12.7022

0.0000, NaN, NaN

■ 77.3354, 0.5849,
13.9157

0.0000, NaN, NaN

0.0000, NaN, NaN

■ 89.5033, 0.1649,

15.1300

0.0000, NaN, NaN

102.2499, -0.2962,
16.3481

18.5521, 1.9951,
6.3848

18.5521, 1.9951,
6.3848

17.6861, 2.9059,
7.1598

19.4562, 1.1634,
5.4758

16.8600, 3.9000,
7.7879

20.3942, 0.4097,
4.4443

16.0775, 4.9761,
8.2575

21.3640, -0.2707,
3.3020

15.3417, 6.1298,
8.5619

22.3631, -0.8824,
2.0594

14.6446, 7.2981,
8.8610

23.3894, -1.4303,
0.7260

■ 14.3857, 7.7414,
9.0000

■ 24.4409, -1.9189,
-0.6896

■ 25.5159, -2.3529,
-2.1799

■ 26.6128, -2.7365,
-3.7381

■ 27.7301, -3.0737,
-5.3583

Harmonies

Analogous

The Analogous color harmony consists of three colors that are next to each other on the color wheel.



18.5525, 5.2951, 4.7586



18.5521, 1.9951, 6.3848



18.5525, -1.8758, 6.7222

Triad

The Triadic color harmony groups three colors that are evenly spaced from another and form a triangle on the color wheel.



18.5525, 1.9943, 6.3850



18.5525, -7.7738, 0.1398



18.5525, 3.6642, -5.5359

Complementary

The Complementary color scheme is a pair of colors which are on the opposite of each other on the color wheel.



18.5521, 1.9951, 6.3848



17.6254, -2.1729, -6.0003

Split Complementary

Split-complementary colors differ from the complementary color scheme. The scheme consists of three colors, the original color and two neighbors of the complement color.



18.5525, -0.0891, -7.4150



18.5521, 1.9951, 6.3848



18.5525, -6.5375, -3.7331

Square

The Square scheme is like the rectangle color scheme, but the four colors are evenly spaced on the color wheel.



18.5525, 1.9943, 6.3850



18.5525, -7.3146, 3.5586



18.5525, -3.7986, -6.6957



18.5525, 6.3127, -1.9612

Rectangle

The Rectangle color scheme consists of four colors that form a rectangle on the color wheel.



18.5521, 1.9951, 6.3848



18.5525, -4.2228, 6.2488



18.5525, -3.7986, -6.6957



18.5525, 2.4786, -6.4167

Sweetspot

The Sweet Spot groups the original color and five complimentary colors.



18.5525, 1.9943, 6.3850



27.9185, -0.4810, 4.0403



16.0155, 9.6289, -1.5576



14.5850, -0.2078, 2.2049



63.7533, -3.4017, 3.4638



15.6573, -0.8354, 0.8507

Same Dimension

The Same Dimension uses a secret algorithm to generate beautiful new colors.



18.5525, 1.9943, 6.3850



22.8191, 3.9146, 9.3942



22.1630, -4.0181, 9.3324



11.9112, -0.3996, 1.2734



21.0473, 12.9172, 13.1954



50.9507, 36.5687, 32.0358

Inverse Universe

The Inverse Universe completely reimagines the original color for something new.



17.6254, -2.1729, -6.0003



21.3478, -2.6315, -10.2722



14.1450, 3.9958, -12.1764



11.8150, -0.8379, -0.0101



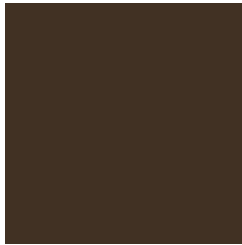
18.1336, 1.4051, -25.6986



43.3093, 7.4039, -70.1157

Previews

White Background



This preview shows how the HunterLab color 18.5521, 1.9951, 6.3848 looks on a white background.

Color Contrast Check

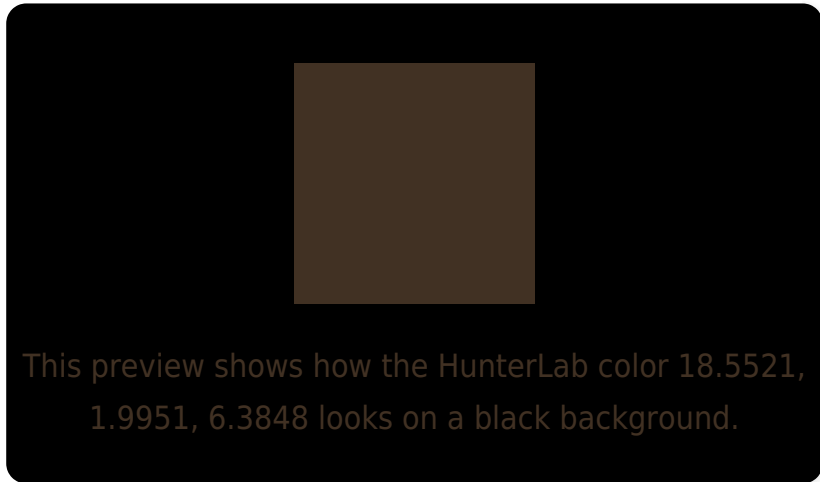
Large Text (above 18pt) WCAG AA ✓ Pass

Any Text WCAG AA ✓ Pass

Large Text (above 18pt) WCAG AAA ✓ Pass

Any Text WCAG AAA ✓ Pass

Black Background



Color Contrast Check

Large Text (above 18pt) WCAG AA × Fail

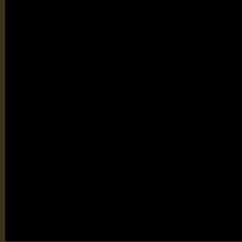
Any Text WCAG AA × Fail

Large Text (above 18pt) WCAG AAA × Fail

Any Text WCAG AAA × Fail

If you want to check with other color combinations, try the [Color Contrast Checker](#).

HunterLab 18.5521, 1.9951, 6.3848 Background



This preview shows how black text looks on a background with the HunterLab color 18.5521, 1.9951, 6.3848.



This preview shows how white text looks on a background with the HunterLab color 18.5521, 1.9951,

Color Blindness Simulation

Color vision deficiency is a very complex topic, and I could not describe the different causes any better than Wikipedia does, so if you want to learn more, you should check out their [article about color blindness](#).

Dichromacy



Original Color

18.5521, 1.9951, 6.3848

Protanopia

18.5044, -1.7330, 6.0241

Deuteranopia

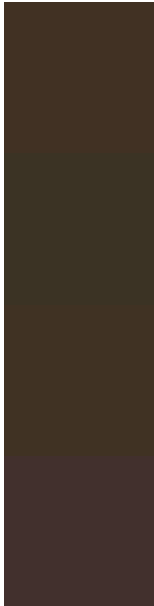
18.5992, 0.9826, 6.4091



Tritanopia

18.5211, 4.7975, 1.4705

Trichromacy



Original Color

18.5521, 1.9951, 6.3848

Protanomaly

18.5063, -0.4995, 6.0475

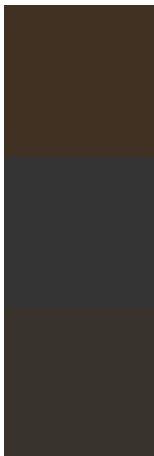
Deuteranomaly

18.6883, 1.2824, 6.4934

Tritanomaly

18.6054, 3.6805, 3.6176

Monochromacy



Original Color

18.5521, 1.9951, 6.3848

Achromatopsia

18.5310, -0.9888, 1.0068

Achromatomaly

18.5331, -0.0299, 3.1505

CSS Examples

Text

The CSS property to change the color of the text to HunterLab 18.5521, 1.9951, 6.3848 is called "color". The color property can be set on classes, ids or directly on the HTML element.

This example shows how text in the color `rgb(65, 49, 35)` looks like.

```
.text, #text, p{  
    color:rgb(65, 49, 35)  
}
```

If you want to add a text shadow in that color use the text-shadow property, you can generate a text shadow directly with our [CSS Text Shadow Generator](#).

Here you see how black text with a 4 pixel rgb(65, 49, 35) colored shadow looks like.

```
.shadow{ text-shadow: 4px 4px 2px rgb(65, 49, 35) }
```

Border

The CSS property to change the border of an element to HunterLab 18.5521, 1.9951, 6.3848 is called "border". The border property can be set on classes, ids or directly on the HTML element.

This example shows the color as border, it can be applied via the CSS property "border" or "border-color".

```
.border, #border, table{ border:4px solid rgb(65, 49, 35) }
```


If only the border color should be changed use the property `border-color`.

```
.border{ border-color:rgb(65, 49, 35) }
```

If you want to add a box shadow in that color use:

Here you see how a box with a 4 pixel `rgb(65, 49, 35)` colored shadow looks like.

```
.boxshadow{ -moz-box-shadow:4px 4px 4px  
4px rgb(65, 49, 35); -webkit-box-  
shadow:4px 4px 4px 4px rgb(65, 49, 35);  
box-shadow:4px 4px 4px 4px rgb(65, 49, 35)  
}
```

Background

The CSS property to change the background color of an element to HunterLab 18.5521, 1.9951, 6.3848 is called "background". The background property can be set on classes, ids or directly on the HTML element.

```
.background, #background, body{  
background: rgb(65, 49, 35) }
```

If only the background color should be changed can be used:

```
.background{ background-color: rgb(65, 49,  
35) }
```

This example shows the color as background, it is applied via the CSS property "background".

To optimize and compress your CSS code, you can use our [online CSS compressor and optimizer](#) based on csstidy. If you want to create a linear or radial gradient as background or border, check our [CSS Gradient Generator](#).

Hey! You found this booklet
interesting? Support Converting
Colors with the new Membership
Option!

The pro membership hides all ads, plus gives you
double the colors in the color bucket, and more
awesome pro features!

[Learn more, Memberships starting at \\$2.50/m!](#)

**Follow me
on Twitter!**

@ConvertingColor