

Converting Colors

HunterLab(18.4976, 7.6804,
2.3782)

Have a look what the booklet for
HunterLab(18.4976, 7.6804, 2.3782)
contains.

HunterLab(18.4413, 7.6796, 2.1558)	3
<i>Conversions</i>	4
<i>Details</i>	6
<i>Harmonies</i>	12
<i>Previews</i>	24
<i>Color Blindness Simulation</i>	28
<i>CSS Examples</i>	31

Color

**HunterLab(18.4413, 7.6796,
2.1558)**

Conversions

Conversions Part 1

Format	Color
Hex	482C31
RGB	72, 44, 49
RGB Percent	28%, 17%, 19%
CMY	0.7176, 0.8274, 0.8078
CMYK	0.00, 0.39, 0.32, 0.72
HSL	349°, 24%, 23%
HSV	349°, 39%, 28%
XYZ	4.1275, 3.4008, 3.3446
YIQ	52.9420, 15.0830, 7.4910

Conversions

Conversions Part 2

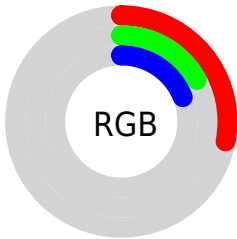
Format	Color
RYB	72, 44, 49
Decimal	4729905
CIELab	21.58, 13.75, 2.16
CIElCh	22, 13.921, 8.934
Yxy	3.4010, 0.3796, 0.3128
Android (android.graphics.Color)	4282919985 (0xFF482C31)
YUV	52.9420, -1.9434, 16.7139
Hunter-Lab	18.4413, 7.6796, 2.1558

Details

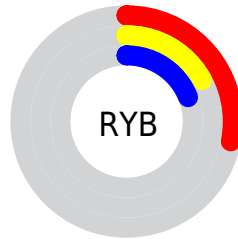
The HunterLab color **18.4413, 7.6796, 2.1558** is a dark color, and the websafe version is hex **663333**. A complement of this color would be **23.6125, -8.2918, 1.0705**, and the grayscale version is **18.8518, -1.0059, 1.0243**.

A 20% lighter version of the original color is **34.9335, 8.3935, 3.2979**, and **5.4175, 9.3182, 3.1871** is the 20% darker color. If you saturate the color by 10%, you get **16.9222, 10.1060, 2.5677**, and if you desaturate by 10%, it is **20.0950, 5.2747, 1.8419**.

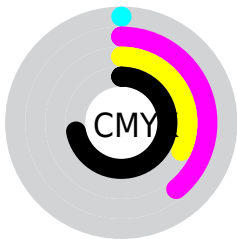
Distribution



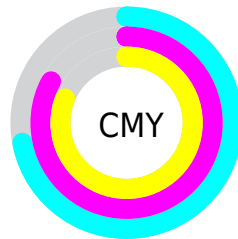
- Red (28%)
- Green (17%)
- Blue (19%)



- Red (28%)
- Yellow (17%)
- Blue (19%)



- Cyan (0%)
- Magenta (39%)
- Yellow (32%)
- Black (72%)



- Cyan (72%)
- Magenta (83%)
- Yellow (81%)

Brightness & Saturation Gradients

These gradients show how the HunterLab color 18.4413, 7.6796, 2.1558 changes by changing the brightness by 10 percent. The first figure shows a shift by +10% for each color and the second figure -10%.

Similar to the brightness gradients but the following saturation gradients show a change of the HunterLab color 18.4413, 7.6796, 2.1558 by changing the saturation by 10% instead.

■ 18.4413, 7.6796,
2.1558

■ 18.4413, 7.6796,
2.1558

■ 115.3461, 8.8906,
8.4526

■ 11.5952, 7.0270,
1.6063

■ 34.9748, 8.5516,
3.3469

■ 4.1864, 14.0904,
2.3685

■ 44.4703, 8.8224,
3.9891

0.0000, NaN, NaN

0.0000, NaN, NaN

■ 54.6970, 9.0043,
4.6619

0.0000, NaN, NaN

■ 65.6060, 9.1083,
5.3643

0.0000, NaN, NaN

■ 77.1569, 9.1429,
6.0954

0.0000, NaN, NaN

0.0000, NaN, NaN

■ 89.3160, 9.1147,

102.0541, 9.0291,
7.6404

18.4413, 7.6796,
2.1558

18.4413, 7.6796,
2.1558

16.9222, 10.1060,
2.5677

20.0950, 5.2747,
1.8419

15.5592, 12.5042,
3.0831

21.8623, 2.9207,
1.6147

14.3781, 14.7869,
3.6997

23.7276, 0.6274,
1.4631

13.4044, 16.8297,
4.4003

25.6775, -1.6038,
1.3763

12.6488, 18.5153,
5.1399

27.7013, -3.7766,
1.3447

■ 11.9395, 20.3267,
5.7349

■ 29.7903, -5.8968,
1.3601

■ 11.8592, 20.5511,
5.7883

■ 31.9372, -7.9711,
1.4155

■ 34.1362, -10.0058,
1.5054

■ 36.3823, -12.0072,
1.6248

Harmonies

Analogous

The Analogous color harmony consists of three colors that are next to each other on the color wheel.



18.4417, 7.1617, -1.9726



18.4413, 7.6796, 2.1558



18.4417, 5.7181, 5.2041

Triad

The Triadic color harmony groups three colors that are evenly spaced from another and form a triangle on the color wheel.



18.4417, 7.6788, 2.1561



18.4417, -5.7851, 6.0306



18.4417, -3.7956, -7.6878

Complementary

The Complementary color scheme is a pair of colors which are on the opposite of each other on the color wheel.



18.4413, 7.6796, 2.1558



23.6125, -8.2918, 1.0705

Split Complementary

Split-complementary colors differ from the complementary color scheme. The scheme consists of three colors, the original color and two neighbors of the complement color.



18.4417, -6.8493, -4.4984



18.4413, 7.6796, 2.1558



18.4417, -7.9245, 3.5543

Square

The Square scheme is like the rectangle color scheme, but the four colors are evenly spaced on the color wheel.



18.4417, 7.6788, 2.1561



18.4417, -2.2210, 7.0889



18.4417, -8.2959, -0.2280



18.4417, 0.2845, -8.2986

Rectangle

The Rectangle color scheme consists of four colors that form a rectangle on the color wheel.



18.4413, 7.6796, 2.1558



18.4417, 3.3646, 6.4411



18.4417, -8.2959, -0.2280



18.4417, -4.9654, -6.8524

Sweetspot

The Sweet Spot groups the original color and five complimentary colors.



18.4417, 7.6788, 2.1561



30.4067, 1.9062, 1.9918



18.5957, 9.4637, -7.9234



15.6375, 1.0606, 1.0332



65.8695, -3.5146, 3.5788



17.3419, -0.9253, 0.9422

Same Dimension

The Same Dimension uses a secret algorithm to generate beautiful new colors.



18.4417, 7.6788, 2.1561



22.3262, 13.3341, 3.3879



20.2331, 3.3590, 5.5431



12.3217, 0.2889, 0.7561



16.4953, 28.5086, 8.6441



40.5950, 69.9062, 23.2385

Inverse Universe

The Inverse Universe completely reimagines the original color for something new.



18.4417, 7.6788, 2.1561



22.3262, 13.3341, 3.3879



21.3852, -4.0914, -3.8919



12.3217, 0.2889, 0.7561



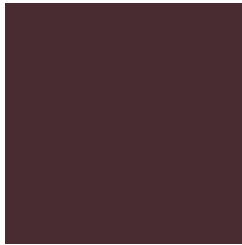
16.4953, 28.5086, 8.6441



40.5950, 69.9062, 23.2385

Previews

White Background



This preview shows how the HunterLab color 18.4413, 7.6796, 2.1558 looks on a white background.

Color Contrast Check

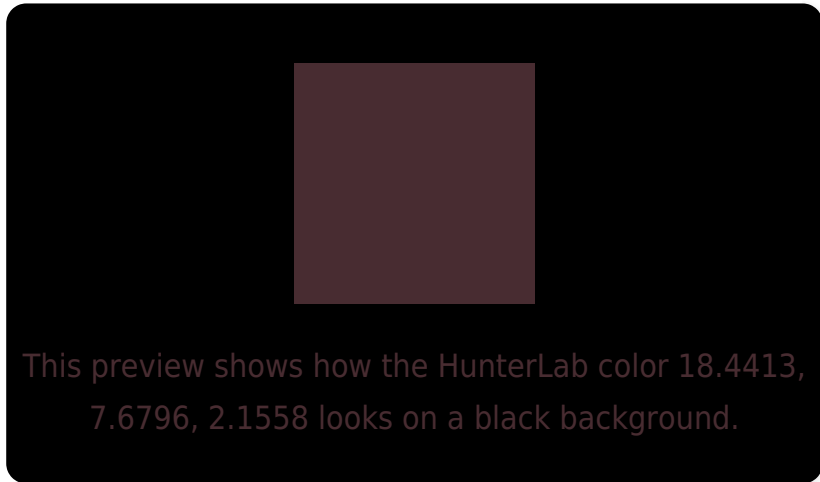
Large Text (above 18pt) WCAG AA ✓ Pass

Any Text WCAG AA ✓ Pass

Large Text (above 18pt) WCAG AAA ✓ Pass

Any Text WCAG AAA ✓ Pass

Black Background



Color Contrast Check

Large Text (above 18pt) WCAG AA × Fail

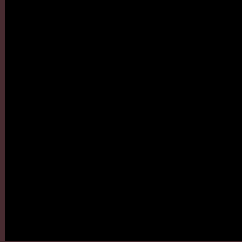
Any Text WCAG AA × Fail

Large Text (above 18pt) WCAG AAA × Fail

Any Text WCAG AAA × Fail

If you want to check with other color combinations, try the [Color Contrast Checker](#).

HunterLab 18.4413, 7.6796, 2.1558 Background



This preview shows how black text looks on a background with the HunterLab color 18.4413, 7.6796, 2.1558.

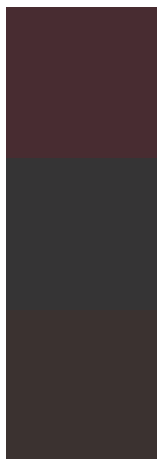


This preview shows how white text looks on a background with the HunterLab color 18.4413, 7.6796,

Color Blindness Simulation

Color vision deficiency is a very complex topic, and I could not describe the different causes any better than Wikipedia does, so if you want to learn more, you should check out their [article about color blindness](#).

Dichromacy



Original Color

18.4413, 7.6796, 2.1558

Protanopia

18.6277, -0.6044, 0.7472

Deuteranopia

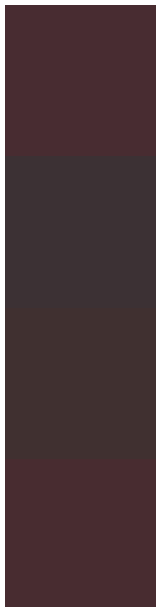
18.5052, 1.1620, 2.4639



Tritanopia

18.4187, 7.5660, 2.4806

Trichromacy



Original Color

18.4413, 7.6796, 2.1558

Protanomaly

18.4532, 2.3523, 0.9736

Deuteranomaly

18.4859, 3.4232, 2.4823

Tritanomaly

18.4187, 7.5660, 2.4806

Monochromacy



Original Color

18.4413, 7.6796, 2.1558

Achromatopsia

18.8683, -1.0068, 1.0252

Achromatomaly

18.6810, 1.9354, 1.2339

CSS Examples

Text

The CSS property to change the color of the text to HunterLab 18.4413, 7.6796, 2.1558 is called "color". The color property can be set on classes, ids or directly on the HTML element.

This example shows how text in the color `rgb(72, 44, 49)` looks like.

```
.text, #text, p{  
    color:rgb(72, 44, 49)  
}
```

If you want to add a text shadow in that color use the text-shadow property, you can generate a text shadow directly with our [CSS Text Shadow Generator](#).

Here you see how black text with a 4 pixel rgb(72, 44, 49) colored shadow looks like.

```
.shadow{ text-shadow: 4px 4px 2px rgb(72, 44, 49) }
```

Border

The CSS property to change the border of an element to HunterLab 18.4413, 7.6796, 2.1558 is called "border".

The border property can be set on classes, ids or directly on the HTML element.

This example shows the color as border, it can be applied via the CSS property "border" or "border-color".

```
.border, #border, table{ border:4px solid rgb(72, 44, 49) }
```


If only the border color should be changed use the property border-color.

```
.border{ border-color:rgb(72, 44, 49) }
```

If you want to add a box shadow in that color use:

Here you see how a box with a 4 pixel rgb(72, 44, 49) colored shadow looks like.

```
.boxshadow{ -moz-box-shadow:4px 4px 4px  
4px rgb(72, 44, 49); -webkit-box-  
shadow:4px 4px 4px 4px rgb(72, 44, 49);  
box-shadow:4px 4px 4px 4px rgb(72, 44, 49)  
}
```

Background

The CSS property to change the background color of an element to HunterLab 18.4413, 7.6796, 2.1558 is called "background". The background property can be set on classes, ids or directly on the HTML element.

```
.background, #background, body{  
background: rgb(72, 44, 49) }
```

If only the background color should be changed can be used:

```
.background{ background-color: rgb(72, 44,  
49) }
```

This example shows the color as background, it is applied via the CSS property "background".

To optimize and compress your CSS code, you can use our [online CSS compressor and optimizer](#) based on csstidy. If you want to create a linear or radial gradient as background or border, check our [CSS Gradient Generator](#).

Hey! You found this booklet interesting? Support Converting Colors with the new Membership Option!

The pro membership hides all ads, plus gives you double the colors in the color bucket, and more awesome pro features!

[Learn more, Memberships starting at \\$2.50/m!](#)

**Follow me
on Twitter!**

@ConvertingColor