

Converting Colors

HunterLab(18.5467, 6.5219,
3.3265)

Have a look what the booklet for
HunterLab(18.5467, 6.5219, 3.3265)
contains.

HunterLab(18.4760, 6.6022, 3.2058)	3
<i>Conversions</i>	4
<i>Details</i>	6
<i>Harmonies</i>	12
<i>Previews</i>	24
<i>Color Blindness Simulation</i>	28
<i>CSS Examples</i>	31

Color

**HunterLab(18.4760, 6.6022,
3.2058)**

Conversions

Conversions Part 1

Format	Color
Hex	472D2E
RGB	71, 45, 46
RGB Percent	28%, 18%, 18%
CMY	0.7216, 0.8235, 0.8196
CMYK	0.00, 0.37, 0.35, 0.72
HSL	358°, 22%, 23%
HSV	358°, 37%, 28%
XYZ	4.0301, 3.4136, 3.0313
YIQ	52.8880, 15.1750, 5.8230

Conversions

Conversions Part 2

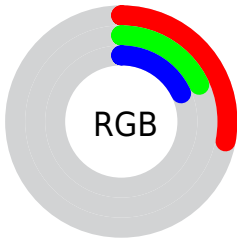
Format	Color
R_{YB}	71, 45, 46
Decimal	4664622
CIE _{Lab}	21.63, 12.15, 4.26
CIE _{LCh}	22, 12.881, 19.330
Yxy	3.4138, 0.3847, 0.3259
Android (android.graphics.Color)	4282854702 (0xFF472D2E)
YUV	52.8880, -3.3958, 15.8842
Hunter-Lab	18.4760, 6.6022, 3.2058

Details

The HunterLab color **18.4760, 6.6022, 3.2058** is a dark color, and the websafe version is hex **333333**. A complement of this color would be **23.4662, -7.2841, -0.3085**, and the grayscale version is **18.8384, -1.0052, 1.0235**.

A 20% lighter version of the original color is **34.9971, 7.1956, 4.5375**, and **5.1109, 8.7525, 3.3025** is the 20% darker color. If you saturate the color by 10%, you get **16.9328, 8.9249, 3.8165**, and if you desaturate by 10%, it is **20.1498, 4.3336, 2.6425**.

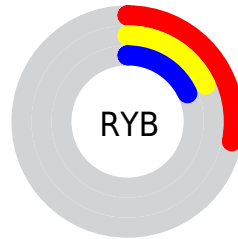
Distribution



Red (28%)

Green (18%)

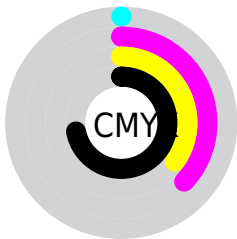
Blue (18%)



Red (28%)

Yellow (18%)

Blue (18%)

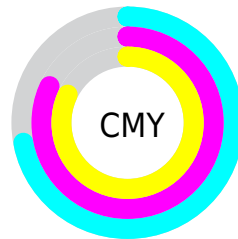


Cyan (0%)

Magenta (37%)

Yellow (35%)

Black (72%)



Cyan (72%)

Magenta (82%)

Yellow (82%)

Brightness & Saturation Gradients

These gradients show how the HunterLab color 18.4760, 6.6022, 3.2058 changes by changing the brightness by 10 percent. The first figure shows a shift by +10% for each color and the second figure -10%.

Similar to the brightness gradients but the following saturation gradients show a change of the HunterLab color 18.4760, 6.6022, 3.2058 by changing the saturation by 10% instead.

■ 18.4760, 6.6022,
3.2058

■ 18.4760, 6.6022,
3.2058

■ 115.4100, 7.1028,
10.5295

■ 11.6249, 6.0548,
2.4728

■ 35.0178, 7.2842,
4.6931

■ 4.2483, 12.2401,
2.9738

■ 44.5168, 7.4689,
5.4618

0.0000, NaN, NaN

0.0000, NaN, NaN

■ 54.7469, 7.5696,
6.2511

0.0000, NaN, NaN

■ 65.6590, 7.5966,
7.0622

0.0000, NaN, NaN

■ 77.2128, 7.5578,
7.8955

0.0000, NaN, NaN

0.0000, NaN, NaN

■ 89.3747, 7.4593,

102.1154, 7.3063,
9.6293

18.4760, 6.6022,
3.2058

18.4760, 6.6022,
3.2058

16.9328, 8.9249,
3.8165

20.1498, 4.3336,
2.6425

15.5417, 11.2640,
4.4664

21.9339, 2.1388,
2.1260

14.3286, 13.5457,
5.1383

23.8128, 0.0211,
1.6539

13.3200, 15.6569,
5.8007

25.7737, -2.0231,
1.2218

12.5383, 17.4531,
6.4074

27.8064, -4.0005,
0.8249

■ 11.8439, 19.2447,
6.9111

■ 29.9022, -5.9192,
0.4585

■ 11.5999, 19.9167,
7.0963

■ 32.0545, -7.7871,
0.1185

■ 34.2573, -9.6119,
-0.1988

■ 36.5061, -11.4001,
-0.4966

Harmonies

Analogous

The Analogous color harmony consists of three colors that are next to each other on the color wheel.



18.4764, 6.9396, -0.3585



18.4760, 6.6022, 3.2058



18.4764, 4.1362, 5.6234

Triad

The Triadic color harmony groups three colors that are evenly spaced from another and form a triangle on the color wheel.



18.4764, 6.6014, 3.2061



18.4764, -6.3168, 5.0623



18.4764, -2.3493, -7.4261

Complementary

The Complementary color scheme is a pair of colors which are on the opposite of each other on the color wheel.



18.4760, 6.6022, 3.2058



23.4662, -7.2841, -0.3085

Split Complementary

Split-complementary colors differ from the complementary color scheme. The scheme consists of three colors, the original color and two neighbors of the complement color.



18.4764, -5.6062, -5.2347



18.4760, 6.6022, 3.2058



18.4764, -7.7679, 2.2733

Square

The Square scheme is like the rectangle color scheme, but the four colors are evenly spaced on the color wheel.



18.4764, 6.6014, 3.2061



18.4764, -3.3944, 6.5319



18.4764, -7.5189, -1.5038



18.4764, 1.5507, -7.0321

Rectangle

The Rectangle color scheme consists of four colors that form a rectangle on the color wheel.



18.4760, 6.6022, 3.2058



18.4764, 1.7238, 6.4943



18.4764, -7.5189, -1.5038



18.4764, -3.5497, -6.9522

Sweetspot

The Sweet Spot groups the original color and five complimentary colors.



18.4764, 6.6014, 3.2061



29.7747, 1.3397, 2.4391



19.0337, 9.6427, -6.6719



14.9863, 0.7463, 1.2481



64.8100, -3.4581, 3.5212



16.4960, -0.8802, 0.8963

Same Dimension

The Same Dimension uses a secret algorithm to generate beautiful new colors.



18.4764, 6.6014, 3.2061



22.1927, 11.3288, 4.8882



21.0378, 1.5404, 5.9930



12.3105, 0.2283, 0.9162



16.3904, 28.1200, 10.1952



40.4251, 69.2764, 25.7555

Inverse Universe

The Inverse Universe completely reimagines the original color for something new.



18.4764, 6.6014, 3.2061



22.1927, 11.3288, 4.8882



20.4251, -2.5426, -4.7630



12.3105, 0.2283, 0.9162



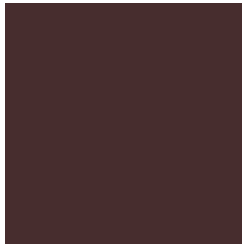
16.3904, 28.1200, 10.1952



40.4251, 69.2764, 25.7555

Previews

White Background



This preview shows how the HunterLab color 18.4760, 6.6022, 3.2058 looks on a white background.

Color Contrast Check

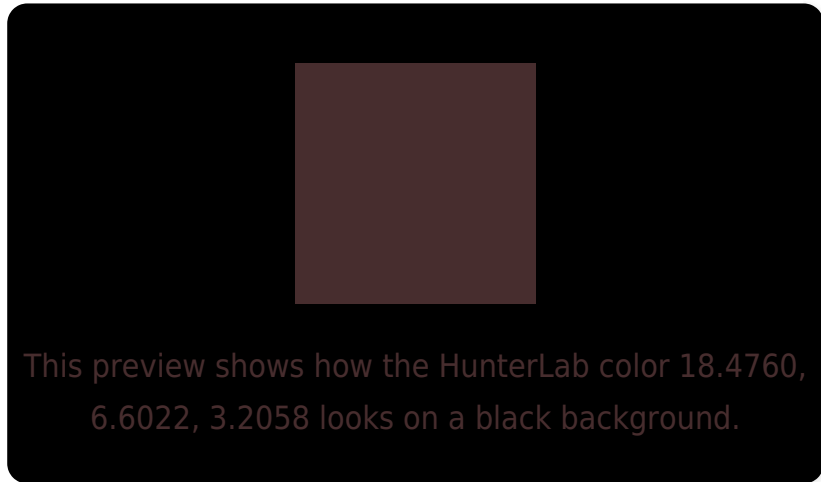
Large Text (above 18pt) WCAG AA ✓ Pass

Any Text WCAG AA ✓ Pass

Large Text (above 18pt) WCAG AAA ✓ Pass

Any Text WCAG AAA ✓ Pass

Black Background



Color Contrast Check

Large Text (above 18pt) WCAG AA × Fail

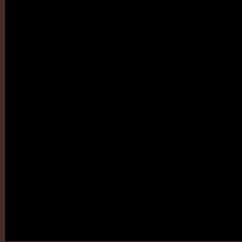
Any Text WCAG AA × Fail

Large Text (above 18pt) WCAG AAA × Fail

Any Text WCAG AAA × Fail

If you want to check with other color combinations, try the [Color Contrast Checker](#).

HunterLab 18.4760, 6.6022, 3.2058 Background



This preview shows how black text looks on a background with the HunterLab color 18.4760, 6.6022, 3.2058.

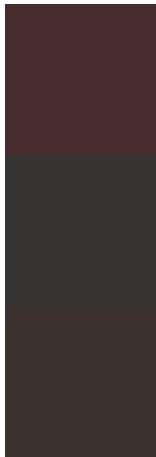


This preview shows how white text looks on a background with the HunterLab color 18.4760, 6.6022,

Color Blindness Simulation

Color vision deficiency is a very complex topic, and I could not describe the different causes any better than Wikipedia does, so if you want to learn more, you should check out their [article about color blindness](#).

Dichromacy



Original Color

18.4760, 6.6022, 3.2058

Protanopia

18.6294, -0.7422, 1.8625

Deuteranopia

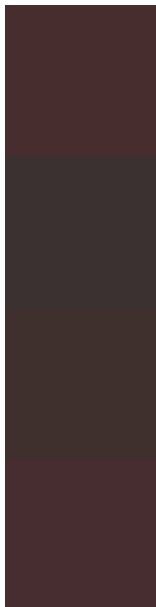
18.5238, 1.0956, 3.4872



Tritanopia

18.5196, 6.8231, 2.5789

Trichromacy



Original Color

18.4760, 6.6022, 3.2058

Protanomaly

18.3822, 1.9750, 1.9894

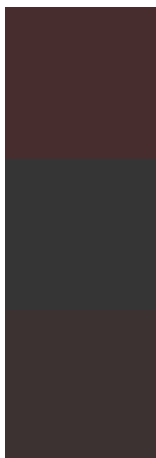
Deuteranomaly

18.4211, 3.0828, 3.4144

Tritanomaly

18.4976, 6.7115, 2.8956

Monochromacy



Original Color

18.4760, 6.6022, 3.2058

Achromatopsia

18.8683, -1.0068, 1.0252

Achromatomaly

18.6337, 1.6834, 1.9098

CSS Examples

Text

The CSS property to change the color of the text to HunterLab 18.4760, 6.6022, 3.2058 is called "color". The color property can be set on classes, ids or directly on the HTML element.

This example shows how text in the color `rgb(71, 45, 46)` looks like.

```
.text, #text, p{  
    color:rgb(71, 45, 46)  
}
```

If you want to add a text shadow in that color use the text-shadow property, you can generate a text shadow directly with our [CSS Text Shadow Generator](#).

Here you see how black text with a 4 pixel rgb(71, 45, 46) colored shadow looks like.

```
.shadow{ text-shadow: 4px 4px 2px rgb(71, 45, 46) }
```

Border

The CSS property to change the border of an element to HunterLab 18.4760, 6.6022, 3.2058 is called "border". The border property can be set on classes, ids or directly on the HTML element.

This example shows the color as border, it can be applied via the CSS property "border" or "border-color".

```
.border, #border, table{ border:4px solid rgb(71, 45, 46) }
```


If only the border color should be changed use the property border-color.

```
.border{ border-color:rgb(71, 45, 46) }
```

If you want to add a box shadow in that color use:

Here you see how a box with a 4 pixel rgb(71, 45, 46) colored shadow looks like.

```
.boxshadow{ -moz-box-shadow:4px 4px 4px  
4px rgb(71, 45, 46); -webkit-box-  
shadow:4px 4px 4px 4px rgb(71, 45, 46);  
box-shadow:4px 4px 4px 4px rgb(71, 45, 46)  
}
```

Background

The CSS property to change the background color of an element to HunterLab 18.4760, 6.6022, 3.2058 is called "background". The background property can be set on classes, ids or directly on the HTML element.

```
.background, #background, body{  
background: rgb(71, 45, 46) }
```

If only the background color should be changed can be used:

```
.background{ background-color: rgb(71, 45,  
46) }
```

This example shows the color as background, it is applied via the CSS property "background".

To optimize and compress your CSS code, you can use our [online CSS compressor and optimizer](#) based on csstidy. If you want to create a linear or radial gradient as background or border, check our [CSS Gradient Generator](#).

Hey! You found this booklet interesting? Support Converting Colors with the new Membership Option!

The pro membership hides all ads, plus gives you double the colors in the color bucket, and more awesome pro features!

[Learn more, Memberships starting at \\$2.50/m!](#)

**Follow me
on Twitter!**

@ConvertingColor