

Converting Colors

HunterLab(18.5786, 1.0548,
5.3374)

Have a look what the booklet for
HunterLab(18.5786, 1.0548, 5.3374)
contains.

HunterLab(18.5791, 1.0499, 5.3413)	3
<i>Conversions</i>	4
<i>Details</i>	6
<i>Harmonies</i>	12
<i>Previews</i>	24
<i>Color Blindness Simulation</i>	28
<i>CSS Examples</i>	31

Color

**HunterLab(18.5791, 1.0499,
5.3413)**

Conversions

Conversions Part 1

Format	Color
Hex	3E3227
RGB	62, 50, 39
RGB Percent	24%, 20%, 15%
CMY	0.7569, 0.8039, 0.8471
CMYK	0.00, 0.19, 0.37, 0.76
HSL	29°, 23%, 20%
HSV	29°, 37%, 24%
XYZ	3.4934, 3.4518, 2.4016
YIQ	52.3340, 10.6830, -0.8770

Conversions

Conversions Part 2

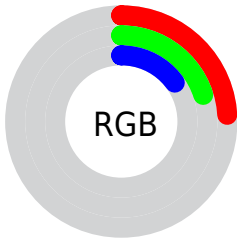
Format	Color
RYB	62, 60, 39
Decimal	4076071
CIELab	21.77, 3.44, 9.03
CIELCh	22, 9.665, 69.140
Yxy	3.4520, 0.3738, 0.3693
Android (android.graphics.Color)	4282266151 (0xFF3E3227)
YUV	52.3340, -6.5737, 8.4771
Hunter-Lab	18.5791, 1.0499, 5.3413

Details

The HunterLab color **18.5791, 1.0499, 5.3413** is a dark color, and the websafe version is hex **333333**. A complement of this color would be **17.7389, -1.9622, -4.3363**, and the grayscale version is **18.6628, -0.9958, 1.0140**.

A 20% lighter version of the original color is **35.1010, 0.6828, 7.4735**, and **4.2930, 3.4531, 2.7058** is the 20% darker color. If you saturate the color by 10%, you get **17.7407, 1.8109, 6.2036**, and if you desaturate by 10%, it is **19.4498, 0.3604, 4.3614**.

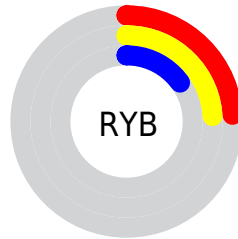
Distribution



Red (24%)

Green (20%)

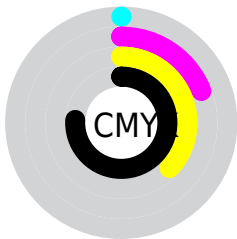
Blue (15%)



Red (24%)

Yellow (24%)

Blue (15%)

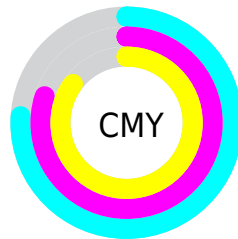


Cyan (0%)

Magenta (19%)

Yellow (37%)

Black (76%)



Cyan (76%)

Magenta (80%)

Yellow (85%)

Brightness & Saturation Gradients

These gradients show how the HunterLab color 18.5791, 1.0499, 5.3413 changes by changing the brightness by 10 percent. The first figure shows a shift by +10% for each color and the second figure -10%.

Similar to the brightness gradients but the following saturation gradients show a change of the HunterLab color 18.5791, 1.0499, 5.3413 by changing the saturation by 10% instead.

■ 18.5791, 1.0499,
5.3413

■ 18.5791, 1.0499,
5.3413

■ 115.5997, -2.4746,
15.0997

■ 11.7133, 1.1382,
4.2139

■ 35.1453, 0.6294,
7.5421

■ 4.4267, 3.1512,
3.0987

■ 44.6550, 0.3243,
8.6119

0.0000, NaN, NaN

0.0000, NaN, NaN

■ 54.8949, -0.0340,
9.6774

0.0000, NaN, NaN

■ 65.8162, -0.4402,
10.7448

0.0000, NaN, NaN

■ 77.3788, -0.8903,
11.8184

0.0000, NaN, NaN

0.0000, NaN, NaN

■ 89.5489, -1.3811,

12.9008

0.0000, NaN, NaN

102.2976, -1.9099,
13.9941

18.5791, 1.0499,
5.3413

18.5791, 1.0499,
5.3413

17.7407, 1.8109,
6.2036

19.4498, 0.3604,
4.3614

16.9358, 2.6484,
6.9363

20.3492, -0.2594,
3.2736

16.1675, 3.5633,
7.5285

21.2755, -0.8143,
2.0881

15.4387, 4.5556,
7.9699

22.2269, -1.3087,
0.8137

14.7514, 5.6178,
8.2647

23.2015, -1.7468,
-0.5413

■ 14.0963, 6.6843,
8.5856

■ 24.1979, -2.1328,
-1.9698

■ 13.9118, 6.9903,
8.6948

■ 25.2145, -2.4708,
-3.4653

■ 26.2501, -2.7643,
-5.0223

■ 27.3034, -3.0169,
-6.6355

Harmonies

Analogous

The Analogous color harmony consists of three colors that are next to each other on the color wheel.



18.5795, 3.5654, 4.0763



18.5791, 1.0499, 5.3413



18.5795, -1.8757, 5.5490

Triad

The Triadic color harmony groups three colors that are evenly spaced from another and form a triangle on the color wheel.



18.5795, 1.0492, 5.3416



18.5795, -6.2165, 0.1429



18.5795, 2.6857, -3.6257

Complementary

The Complementary color scheme is a pair of colors which are on the opposite of each other on the color wheel.



18.5791, 1.0499, 5.3413



17.7389, -1.9622, -4.3363

Split Complementary

Split-complementary colors differ from the complementary color scheme. The scheme consists of three colors, the original color and two neighbors of the complement color.



18.5795, -0.0922, -5.0715



18.5791, 1.0499, 5.3413



18.5795, -5.1491, -2.6852

Square

The Square scheme is like the rectangle color scheme, but the four colors are evenly spaced on the color wheel.



18.5795, 1.0492, 5.3416



18.5795, -5.9526, 2.8142



18.5795, -2.9494, -4.7030



18.5795, 4.5500, -0.9925

Rectangle

The Rectangle color scheme consists of four colors that form a rectangle on the color wheel.



18.5791, 1.0499, 5.3413



18.5795, -3.6478, 5.0972



18.5795, -2.9494, -4.7030



18.5795, 1.8211, -4.2839

Sweetspot

The Sweet Spot groups the original color and five complimentary colors.



18.5795, 1.0492, 5.3416



27.4740, -0.7600, 3.4539



16.4821, 7.0641, -1.0979



14.0711, -0.3767, 1.8001



62.6995, -3.3455, 3.4066



14.8260, -0.7911, 0.8055

Same Dimension

The Same Dimension uses a secret algorithm to generate beautiful new colors.



18.5795, 1.0492, 5.3416



23.3629, 2.3837, 8.1682



21.2911, -3.4385, 7.7139



11.1611, -0.3931, 1.1866



20.7001, 12.0250, 12.9658



50.8312, 34.8104, 31.9313

Inverse Universe

The Inverse Universe completely reimagines the original color for something new.



17.7389, -1.9622, -4.3363



21.9753, -2.5530, -7.8264



15.1033, 2.6100, -8.5386



11.0576, -0.7672, -0.0033



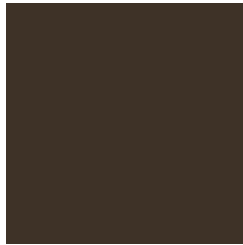
17.4055, 1.7798, -25.5974



42.0657, 8.6188, -71.1839

Previews

White Background



This preview shows how the HunterLab color 18.5791, 1.0499, 5.3413 looks on a white background.

Color Contrast Check

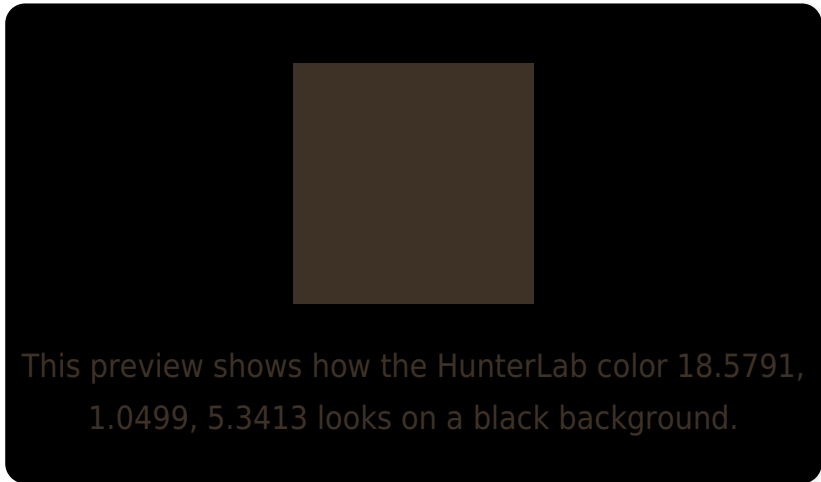
Large Text (above 18pt) WCAG AA ✓ Pass

Any Text WCAG AA ✓ Pass

Large Text (above 18pt) WCAG AAA ✓ Pass

Any Text WCAG AAA ✓ Pass

Black Background



Color Contrast Check

Large Text (above 18pt) WCAG AA × Fail

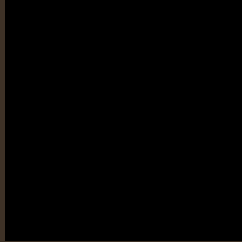
Any Text WCAG AA × Fail

Large Text (above 18pt) WCAG AAA × Fail

Any Text WCAG AAA × Fail

If you want to check with other color combinations, try the [Color Contrast Checker](#).

HunterLab 18.5791, 1.0499, 5.3413 Background



This preview shows how black text looks on a background with the HunterLab color 18.5791, 1.0499, 5.3413.

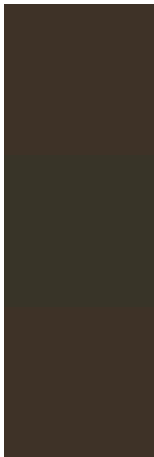


This preview shows how white text looks on a background with the HunterLab color 18.5791, 1.0499,

Color Blindness Simulation

Color vision deficiency is a very complex topic, and I could not describe the different causes any better than Wikipedia does, so if you want to learn more, you should check out their [article about color blindness](#).

Dichromacy



Original Color

18.5791, 1.0499, 5.3413

Protanopia

18.5740, -1.3494, 5.0135

Deuteranopia

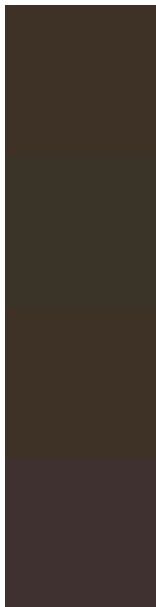
18.5791, 1.0499, 5.3413



Tritanopia

18.4895, 3.6214, 1.0386

Trichromacy



Original Color

18.5791, 1.0499, 5.3413

Protanomaly

18.4943, -0.4013, 4.9534

Deuteranomaly

18.5791, 1.0499, 5.3413

Tritanomaly

18.5974, 2.5962, 2.9313

Monochromacy



Original Color

18.5791, 1.0499, 5.3413

Achromatopsia

18.5310, -0.9888, 1.0068

Achromatomaly

18.4760, -0.1826, 2.7516

CSS Examples

Text

The CSS property to change the color of the text to HunterLab 18.5791, 1.0499, 5.3413 is called "color". The color property can be set on classes, ids or directly on the HTML element.

This example shows how text in the color `rgb(62, 50, 39)` looks like.

```
.text, #text, p{  
    color:rgb(62, 50, 39)  
}
```

If you want to add a text shadow in that color use the text-shadow property, you can generate a text shadow directly with our [CSS Text Shadow Generator](#).

Here you see how black text with a 4 pixel rgb(62, 50, 39) colored shadow looks like.

```
.shadow{ text-shadow: 4px 4px 2px rgb(62, 50, 39) }
```

Border

The CSS property to change the border of an element to HunterLab 18.5791, 1.0499, 5.3413 is called "border". The border property can be set on classes, ids or directly on the HTML element.

This example shows the color as border, it can be applied via the CSS property "border" or "border-color".

```
.border, #border, table{ border:4px solid rgb(62, 50, 39) }
```


If only the border color should be changed use the property `border-color`.

```
.border{ border-color:rgb(62, 50, 39) }
```

If you want to add a box shadow in that color use:

Here you see how a box with a 4 pixel `rgb(62, 50, 39)` colored shadow looks like.

```
.boxshadow{ -moz-box-shadow:4px 4px 4px  
4px rgb(62, 50, 39); -webkit-box-  
shadow:4px 4px 4px 4px rgb(62, 50, 39);  
box-shadow:4px 4px 4px 4px rgb(62, 50, 39)  
}
```

Background

The CSS property to change the background color of an element to HunterLab 18.5791, 1.0499, 5.3413 is called "background". The background property can be set on classes, ids or directly on the HTML element.

```
.background, #background, body{  
background: rgb(62, 50, 39) }
```

If only the background color should be changed can be used:

```
.background{ background-color: rgb(62, 50,  
39) }
```

This example shows the color as background, it is applied via the CSS property "background".

To optimize and compress your CSS code, you can use our [online CSS compressor and optimizer](#) based on csstidy. If you want to create a linear or radial gradient as background or border, check our [CSS Gradient Generator](#).

Hey! You found this booklet
interesting? Support Converting
Colors with the new Membership
Option!

The pro membership hides all ads, plus gives you
double the colors in the color bucket, and more
awesome pro features!

[Learn more, Memberships starting at \\$2.50/m!](#)

**Follow me
on Twitter!**

@ConvertingColor