

Converting Colors

HunterLab(18.5793, 1.2945,
5.6734)

Have a look what the booklet for
HunterLab(18.5793, 1.2945, 5.6734)
contains.

| | |
|---|----|
| HunterLab(18.6491, 1.2504, 5.6836) | 3 |
| <i>Conversions</i> | 4 |
| <i>Details</i> | 6 |
| <i>Harmonies</i> | 12 |
| <i>Previews</i> | 24 |
| <i>Color Blindness Simulation</i> | 28 |
| <i>CSS Examples</i> | 31 |

Color

**HunterLab(18.6491, 1.2504,
5.6836)**

Conversions

Conversions Part 1

| Format | Color |
|-------------|---------------------------|
| Hex | 3F3226 |
| RGB | 63, 50, 38 |
| RGB Percent | 25%, 20%, 15% |
| CMY | 0.7529, 0.8039, 0.8510 |
| CMYK | 0.00, 0.21, 0.40, 0.75 |
| HSL | 29°, 25%, 20% |
| HSV | 29°, 40%, 25% |
| XYZ | 3.5403, 3.4779, 2.3184 |
| YIQ | 52.5190, 11.6000, -0.9760 |

Conversions

Conversions Part 2

| Format | Color |
|-------------------------------------|--|
| RYB | 63, 61, 38 |
| Decimal | 4141606 |
| CIELab | 21.86, 3.77, 9.85 |
| CIELCh | 22, 10.548, 69.038 |
| Yxy | 3.4781, 0.3792, 0.3725 |
| Android (android.graphics.Color) | 4282331686 (0xFF3F3226) |
| YUV | 52.5190, -7.1579, 9.1918 |
| Hunter-Lab | 18.6491, 1.2504, 5.6836 |

Details

The HunterLab color **18.6491, 1.2504, 5.6836** is a dark color, and the websafe version is hex **333333**. A complement of this color would be **17.7157, -1.9812, -4.8568**, and the grayscale version is **18.7269, -0.9992, 1.0175**.

A 20% lighter version of the original color is **35.1707, 0.8755, 7.8916**, and **4.6415, 3.1406, 2.9150** is the 20% darker color. If you saturate the color by 10%, you get **17.8062, 2.0419, 6.5286**, and if you desaturate by 10%, it is **19.5255, 0.5328, 4.7149**.

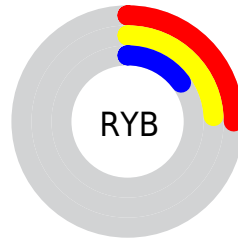
Distribution



Red (25%)

Green (20%)

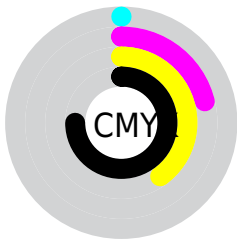
Blue (15%)



Red (25%)

Yellow (24%)

Blue (15%)

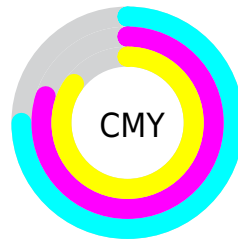


Cyan (0%)

Magenta (21%)

Yellow (40%)

Black (75%)



Cyan (75%)

Magenta (80%)

Yellow (85%)

Brightness & Saturation Gradients

These gradients show how the HunterLab color 18.6491, 1.2504, 5.6836 changes by changing the brightness by 10 percent. The first figure shows a shift by +10% for each color and the second figure -10%.

Similar to the brightness gradients but the following saturation gradients show a change of the HunterLab color 18.6491, 1.2504, 5.6836 by changing the saturation by 10% instead.

■ 18.6491, 1.2504,
5.6836

■ 18.6491, 1.2504,
5.6836

■ 115.7284, -2.1205,
15.8729

■ 11.7733, 1.3136,
4.5070

■ 35.2319, 0.8725,
8.0113

■ 4.5437, 3.3762,
3.1806

■ 44.7487, 0.5861,
9.1346

0.0000, NaN, NaN

0.0000, NaN, NaN

■ 54.9953, 0.2453,
10.2490

0.0000, NaN, NaN

■ 65.9229, -0.1444,
11.3617

0.0000, NaN, NaN

■ 77.4914, -0.5790,
12.4777

0.0000, NaN, NaN

0.0000, NaN, NaN

■ 89.6671, -1.0549,

13.6001

0.0000, NaN, NaN

102.4212, -1.5695,
14.7313

18.6491, 1.2504,
5.6836

18.6491, 1.2504,
5.6836

17.8062, 2.0419,
6.5286

19.5255, 0.5328,
4.7149

16.9982, 2.9123,
7.2377

20.4316, -0.1125,
3.6328

16.2281, 3.8620,
7.8000

21.3657, -0.6903,
2.4478

15.4990, 4.8902,
8.2051

22.3258, -1.2050,
1.1693

14.8110, 5.9799,
8.4839

23.3101, -1.6612,
-0.1941

■ 14.1544, 7.0613,
8.8214

■ 24.3168, -2.0630,
-1.6349

■ 14.1340, 7.0954,
8.8335

■ 25.3446, -2.4145,
-3.1461

■ 26.3920, -2.7197,
-4.7218

■ 27.4578, -2.9822,
-6.3567

Harmonies

Analogous

The Analogous color harmony consists of three colors that are next to each other on the color wheel.



18.6495, 4.0121, 4.3294



18.6491, 1.2504, 5.6836



18.6495, -1.9501, 5.9078

Triad

The Triadic color harmony groups three colors that are evenly spaced from another and form a triangle on the color wheel.



18.6495, 1.2497, 5.6839



18.6495, -6.6762, 0.0749



18.6495, 3.0272, -4.1103

Complementary

The Complementary color scheme is a pair of colors which are on the opposite of each other on the color wheel.



18.6491, 1.2504, 5.6836



17.7157, -1.9812, -4.8568

Split Complementary

Split-complementary colors differ from the complementary color scheme. The scheme consists of three colors, the original color and two neighbors of the complement color.



18.6495, -0.0225, -5.7168



18.6491, 1.2504, 5.6836



18.6495, -5.5259, -3.0472

Square

The Square scheme is like the rectangle color scheme, but the four colors are evenly spaced on the color wheel.



18.6495, 1.2497, 5.6839



18.6495, -6.3860, 2.9845



18.6495, -3.1404, -5.2980



18.6495, 5.0853, -1.1956

Rectangle

The Rectangle color scheme consists of four colors that form a rectangle on the color wheel.



18.6491, 1.2504, 5.6836



18.6495, -3.8814, 5.4305



18.6495, -3.1404, -5.2980



18.6495, 2.0761, -4.8418

Sweetspot

The Sweet Spot groups the original color and five complimentary colors.



18.6495, 1.2497, 5.6839



27.3507, -0.6909, 3.6220



16.3859, 7.7955, -1.2392



14.0163, -0.3462, 1.8755



62.6995, -3.3455, 3.4066



14.8260, -0.7911, 0.8055

Same Dimension

The Same Dimension uses a secret algorithm to generate beautiful new colors.



18.6495, 1.2497, 5.6839



23.0410, 2.6899, 8.5033



21.5872, -3.6157, 8.2022



11.1623, -0.3951, 1.1879



20.7305, 11.9553, 12.9833



50.9096, 34.6223, 31.9764

Inverse Universe

The Inverse Universe completely reimagines the original color for something new.



17.7157, -1.9812, -4.8568



21.5339, -2.4822, -8.5342



14.8697, 2.9875, -9.5357



11.0564, -0.7652, -0.0047



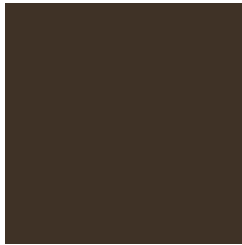
17.3659, 1.8518, -25.7034



41.9604, 8.8213, -71.4894

Previews

White Background



This preview shows how the HunterLab color 18.6491, 1.2504, 5.6836 looks on a white background.

Color Contrast Check

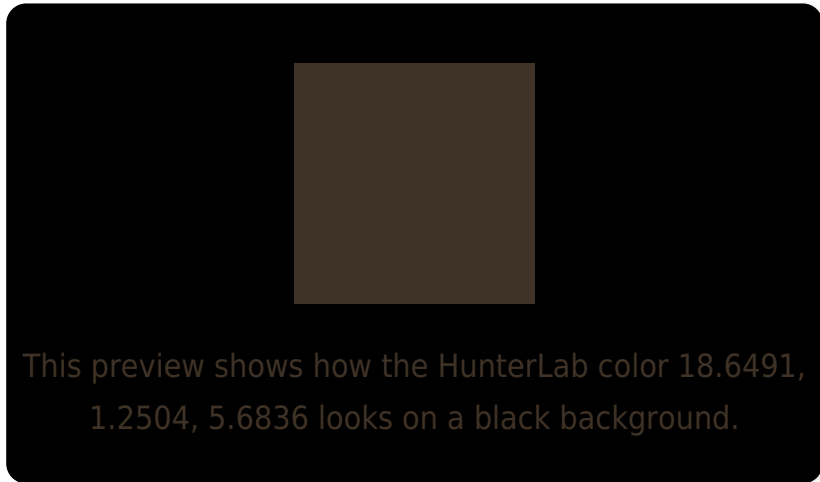
Large Text (above 18pt) WCAG AA ✓ Pass

Any Text WCAG AA ✓ Pass

Large Text (above 18pt) WCAG AAA ✓ Pass

Any Text WCAG AAA ✓ Pass

Black Background



Color Contrast Check

Large Text (above 18pt) WCAG AA × Fail

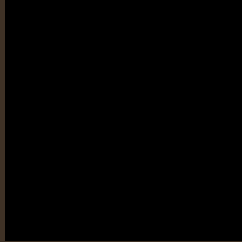
Any Text WCAG AA × Fail

Large Text (above 18pt) WCAG AAA × Fail

Any Text WCAG AAA × Fail

If you want to check with other color combinations, try the [Color Contrast Checker](#).

HunterLab 18.6491, 1.2504, 5.6836 Background



This preview shows how black text looks on a background with the HunterLab color 18.6491, 1.2504, 5.6836.

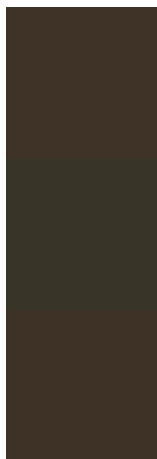


This preview shows how white text looks on a background with the HunterLab color 18.6491, 1.2504,

Color Blindness Simulation

Color vision deficiency is a very complex topic, and I could not describe the different causes any better than Wikipedia does, so if you want to learn more, you should check out their [article about color blindness](#).

Dichromacy



Original Color

18.6491, 1.2504, 5.6836

Protanopia

18.5559, -1.4489, 5.2756

Deuteranopia

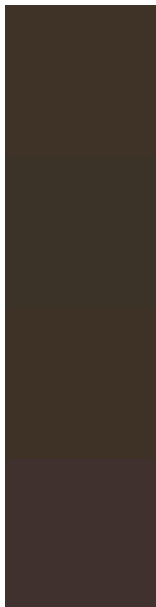
18.5615, 0.9553, 5.5968



Tritanopia

18.5791, 3.9102, 1.1491

Trichromacy



Original Color

18.6491, 1.2504, 5.6836

Protanomaly

18.5579, -0.2188, 5.2990

Deuteranomaly

18.5615, 0.9553, 5.5968

Tritanomaly

18.6865, 2.8884, 3.0322

Monochromacy



Original Color

18.6491, 1.2504, 5.6836

Achromatopsia

18.8683, -1.0068, 1.0252

Achromatomaly

18.8129, -0.1993, 2.7762

CSS Examples

Text

The CSS property to change the color of the text to HunterLab 18.6491, 1.2504, 5.6836 is called "color". The color property can be set on classes, ids or directly on the HTML element.

This example shows how text in the color `rgb(63, 50, 38)` looks like.

```
.text, #text, p{  
    color:rgb(63, 50, 38)  
}
```

If you want to add a text shadow in that color use the text-shadow property, you can generate a text shadow directly with our [CSS Text Shadow Generator](#).

Here you see how black text with a 4 pixel rgb(63, 50, 38) colored shadow looks like.

```
.shadow{ text-shadow: 4px 4px 2px rgb(63, 50, 38) }
```

Border

The CSS property to change the border of an element to HunterLab 18.6491, 1.2504, 5.6836 is called "border". The border property can be set on classes, ids or directly on the HTML element.

This example shows the color as border, it can be applied via the CSS property "border" or "border-color".

```
.border, #border, table{ border:4px solid rgb(63, 50, 38) }
```


If only the border color should be changed use the property `border-color`.

```
.border{ border-color:rgb(63, 50, 38) }
```

If you want to add a box shadow in that color use:

Here you see how a box with a 4 pixel `rgb(63, 50, 38)` colored shadow looks like.

```
.boxshadow{ -moz-box-shadow:4px 4px 4px  
4px rgb(63, 50, 38); -webkit-box-  
shadow:4px 4px 4px 4px rgb(63, 50, 38);  
box-shadow:4px 4px 4px 4px rgb(63, 50, 38)  
}
```

Background

The CSS property to change the background color of an element to HunterLab 18.6491, 1.2504, 5.6836 is called "background". The background property can be set on classes, ids or directly on the HTML element.

```
.background, #background, body{  
background: rgb(63, 50, 38) }
```

If only the background color should be changed can be used:

```
.background{ background-color: rgb(63, 50,  
38) }
```

This example shows the color as background, it is applied via the CSS property "background".

To optimize and compress your CSS code, you can use our [online CSS compressor and optimizer](#) based on csstidy. If you want to create a linear or radial gradient as background or border, check our [CSS Gradient Generator](#).

Hey! You found this booklet interesting? Support Converting Colors with the new Membership Option!

The pro membership hides all ads, plus gives you double the colors in the color bucket, and more awesome pro features!

[Learn more, Memberships starting at \\$2.50/m!](#)

**Follow me
on Twitter!**

@ConvertingColor