

Converting Colors

HunterLab(18.5982, 8.7246,
7.2932)

Have a look what the booklet for
HunterLab(18.5982, 8.7246, 7.2932)
contains.

HunterLab(18.6931, 8.8161, 7.3387)	3
<i>Conversions</i>	4
<i>Details</i>	6
<i>Harmonies</i>	12
<i>Previews</i>	24
<i>Color Blindness Simulation</i>	28
<i>CSS Examples</i>	31

Color

**HunterLab(18.6931, 8.8161,
7.3387)**

Conversions

Conversions Part 1

Format	Color
Hex	4F2B20
RGB	79, 43, 32
RGB Percent	31%, 17%, 13%
CMY	0.6902, 0.8314, 0.8745
CMYK	0.00, 0.46, 0.59, 0.69
HSL	14°, 42%, 22%
HSV	14°, 59%, 31%
XYZ	4.3491, 3.4943, 1.8118
YIQ	52.5100, 24.9870, 4.2110

Conversions

Conversions Part 2

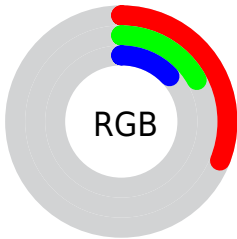
Format	Color
RYB	79, 46, 32
Decimal	5188384
CIELab	21.92, 15.37, 14.33
CIELCh	22, 21.012, 42.989
Yxy	3.4945, 0.4504, 0.3619
Android (android.graphics.Color)	4283378464 (0xFF4F2B20)
YUV	52.5100, -10.1114, 23.2317
Hunter-Lab	18.6931, 8.8161, 7.3387

Details

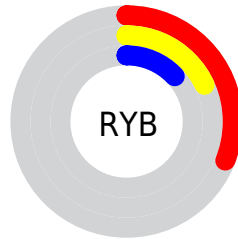
The HunterLab color **18.6931, 8.8161, 7.3387** is a dark color, and the websafe version is hex **663333**. A complement of this color would be **22.3732, -6.6498, -5.9329**, and the grayscale version is **18.7304, -0.9994, 1.0177**.

A 20% lighter version of the original color is **35.2312, 9.6963, 10.3724**, and **5.6862, 9.7379, 3.6743** is the 20% darker color. If you saturate the color by 10%, you get **17.4608, 10.8510, 7.9962**, and if you desaturate by 10%, it is **20.0397, 6.8512, 6.5551**.

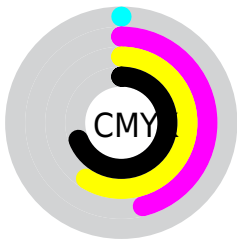
Distribution



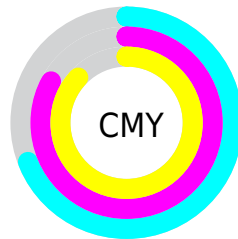
- Red (31%)
- Green (17%)
- Blue (13%)



- Red (31%)
- Yellow (18%)
- Blue (13%)



- Cyan (0%)
- Magenta (46%)
- Yellow (59%)
- Black (69%)



- Cyan (69%)
- Magenta (83%)
- Yellow (87%)

Brightness & Saturation Gradients

These gradients show how the HunterLab color 18.6931, 8.8161, 7.3387 changes by changing the brightness by 10 percent. The first figure shows a shift by +10% for each color and the second figure -10%.

Similar to the brightness gradients but the following saturation gradients show a change of the HunterLab color 18.6931, 8.8161, 7.3387 by changing the saturation by 10% instead.

■ 18.6931, 8.8161,
7.3387

■ 18.6931, 8.8161,
7.3387

■ 115.8093, 10.7070,
19.9470

■ 11.8111, 8.0676,
6.0804

■ 35.2863, 9.8659,
10.3852

■ 4.6158, 14.2633,
3.2310

■ 44.8077, 10.2187,
11.8094

0.0000, NaN, NaN

■ 55.0584, 10.4785,
13.1984

0.0000, NaN, NaN

■ 65.9899, 10.6567,
14.5649

0.0000, NaN, NaN

■ 77.5622, 10.7623,
15.9176

0.0000, NaN, NaN

■ 89.7414, 10.8022,

0.0000, NaN, NaN

17.2628

0.0000, NaN, NaN

102.4988, 10.7822,
18.6048

18.6931, 8.8161,
7.3387

18.6931, 8.8161,
7.3387

17.4608, 10.8510,
7.9962

20.0397, 6.8512,
6.5551

16.3557, 12.9244,
8.4989

21.4856, 4.9781,
5.6694

15.3927, 14.9766,
8.8290

23.0193, 3.2023,
4.7025

14.5676, 16.8557,
9.2247

24.6306, 1.5233,
3.6709

14.5294, 16.9440,
9.2496

26.3106, -0.0638,
2.5873

■ 28.0517, -1.5663,
1.4612

■ 29.8475, -2.9919,
0.3001

■ 31.6927, -4.3488,
-0.8907

■ 33.5827, -5.6446,
-2.1068

Harmonies

Analogous

The Analogous color harmony consists of three colors that are next to each other on the color wheel.



18.6936, 12.4733, 3.4480



18.6931, 8.8161, 7.3387



18.6936, 2.7158, 9.0741

Triad

The Triadic color harmony groups three colors that are evenly spaced from another and form a triangle on the color wheel.



18.6936, 8.8150, 7.3390



18.6936, -11.3146, 4.1112



18.6936, 1.8305, -14.2388

Complementary

The Complementary color scheme is a pair of colors which are on the opposite of each other on the color wheel.



18.6931, 8.8161, 7.3387



22.3732, -6.6498, -5.9329

Split Complementary

Split-complementary colors differ from the complementary color scheme. The scheme consists of three colors, the original color and two neighbors of the complement color.



18.6936, -4.4436, -13.8759



18.6931, 8.8161, 7.3387



18.6936, -11.4851, -1.7907

Square

The Square scheme is like the rectangle color scheme, but the four colors are evenly spaced on the color wheel.



18.6936, 8.8150, 7.3390



18.6936, -8.6279, 7.6840



18.6936, -9.1296, -8.7801



18.6936, 8.0927, -9.6496

Rectangle

The Rectangle color scheme consists of four colors that form a rectangle on the color wheel.



18.6931, 8.8161, 7.3387



18.6936, -1.6318, 9.3061



18.6936, -9.1296, -8.7801



18.6936, -0.3565, -14.7276

Sweetspot

The Sweet Spot groups the original color and five complimentary colors.



18.6936, 8.8150, 7.3390



32.2932, 1.8034, 4.6665



17.6439, 17.5358, -7.2162



15.9387, 1.0791, 2.4454



66.9319, -3.5713, 3.6365



18.1947, -0.9708, 0.9886

Same Dimension

The Same Dimension uses a secret algorithm to generate beautiful new colors.



18.6936, 8.8150, 7.3390



22.1636, 15.2256, 10.7126



23.9118, -1.0815, 11.3270



13.2507, -0.0996, 1.2470



18.6360, 22.9754, 11.8856



43.9921, 60.0746, 28.1594

Inverse Universe

The Inverse Universe completely reimagines the original color for something new.



22.3732, -6.6498, -5.9329



27.8092, -9.0384, -9.8228



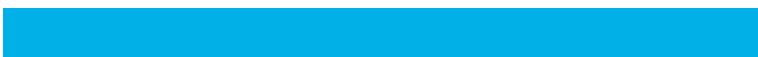
16.4712, 2.9029, -16.4266



13.5433, -1.2905, 0.2022



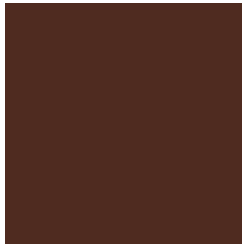
25.3487, -8.2260, -13.9260



60.5378, -18.3852, -35.9786

Previews

White Background



This preview shows how the HunterLab color 18.6931, 8.8161, 7.3387 looks on a white background.

Color Contrast Check

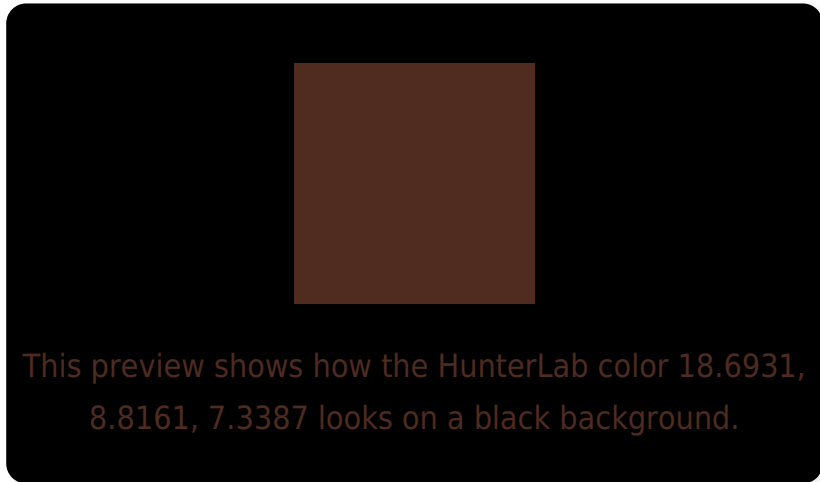
Large Text (above 18pt) WCAG AA ✓ Pass

Any Text WCAG AA ✓ Pass

Large Text (above 18pt) WCAG AAA ✓ Pass

Any Text WCAG AAA ✓ Pass

Black Background



Color Contrast Check

Large Text (above 18pt) WCAG AA × Fail

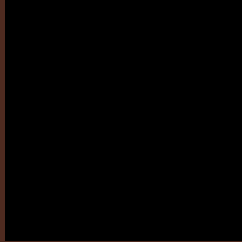
Any Text WCAG AA × Fail

Large Text (above 18pt) WCAG AAA × Fail

Any Text WCAG AAA × Fail

If you want to check with other color combinations, try the [Color Contrast Checker](#).

HunterLab 18.6931, 8.8161, 7.3387 Background



This preview shows how black text looks on a background with the HunterLab color 18.6931, 8.8161, 7.3387.

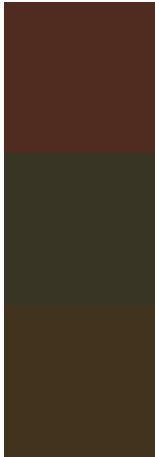


This preview shows how white text looks on a background with the HunterLab color 18.6931, 8.8161,

Color Blindness Simulation

Color vision deficiency is a very complex topic, and I could not describe the different causes any better than Wikipedia does, so if you want to learn more, you should check out their [article about color blindness](#).

Dichromacy



Original Color

18.6931, 8.8161, 7.3387

Protanopia

18.8240, -1.8498, 6.3098

Deuteranopia

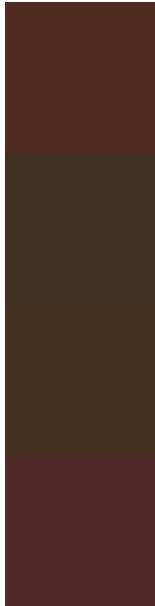
18.9346, 0.7847, 7.8350



Tritanopia

18.6365, 11.0217, 4.0958

Trichromacy



Original Color

18.6931, 8.8161, 7.3387

Protanomaly

18.5521, 1.9951, 6.3848

Deuteranomaly

18.7481, 3.6566, 7.5170

Tritanomaly

18.7473, 10.2216, 5.3821

Monochromacy



Original Color

18.6931, 8.8161, 7.3387

Achromatopsia

18.8683, -1.0068, 1.0252

Achromatomaly

18.4668, 2.0803, 3.4448

CSS Examples

Text

The CSS property to change the color of the text to HunterLab 18.6931, 8.8161, 7.3387 is called "color". The color property can be set on classes, ids or directly on the HTML element.

This example shows how text in the color `rgb(79, 43, 32)` looks like.

```
.text, #text, p{  
    color:rgb(79, 43, 32)  
}
```

If you want to add a text shadow in that color use the text-shadow property, you can generate a text shadow directly with our [CSS Text Shadow Generator](#).

Here you see how black text with a 4 pixel rgb(79, 43, 32) colored shadow looks like.

```
.shadow{ text-shadow: 4px 4px 2px rgb(79, 43, 32) }
```

Border

The CSS property to change the border of an element to HunterLab 18.6931, 8.8161, 7.3387 is called "border".

The border property can be set on classes, ids or directly on the HTML element.

This example shows the color as border, it can be applied via the CSS property "border" or "border-color".

```
.border, #border, table{ border:4px solid rgb(79, 43, 32) }
```


If only the border color should be changed use the property `border-color`.

```
.border{ border-color:rgb(79, 43, 32) }
```

If you want to add a box shadow in that color use:

Here you see how a box with a 4 pixel `rgb(79, 43, 32)` colored shadow looks like.

```
.boxshadow{ -moz-box-shadow:4px 4px 4px  
4px rgb(79, 43, 32); -webkit-box-  
shadow:4px 4px 4px 4px rgb(79, 43, 32);  
box-shadow:4px 4px 4px 4px rgb(79, 43, 32)  
}
```

Background

The CSS property to change the background color of an element to HunterLab 18.6931, 8.8161, 7.3387 is called "background". The background property can be set on classes, ids or directly on the HTML element.

```
.background, #background, body{  
background: rgb(79, 43, 32) }
```

If only the background color should be changed can be used:

```
.background{ background-color: rgb(79, 43,  
32) }
```

This example shows the color as background, it is applied via the CSS property "background".

To optimize and compress your CSS code, you can use our [online CSS compressor and optimizer](#) based on csstidy. If you want to create a linear or radial gradient as background or border, check our [CSS Gradient Generator](#).

Hey! You found this booklet interesting? Support Converting Colors with the new Membership Option!

The pro membership hides all ads, plus gives you double the colors in the color bucket, and more awesome pro features!

[Learn more, Memberships starting at \\$2.50/m!](#)

**Follow me
on Twitter!**

@ConvertingColor