

Converting Colors

HunterLab(18.6482, 7.6515,
3.9111)

Have a look what the booklet for
HunterLab(18.6482, 7.6515, 3.9111)
contains.

HunterLab(18.5447, 7.7746, 3.9449)	3
<i>Conversions</i>	4
<i>Details</i>	6
<i>Harmonies</i>	12
<i>Previews</i>	24
<i>Color Blindness Simulation</i>	28
<i>CSS Examples</i>	31

Color

**HunterLab(18.5447, 7.7746,
3.9449)**

Conversions

Conversions Part 1

Format	Color
Hex	4A2C2C
RGB	74, 44, 44
RGB Percent	29%, 17%, 17%
CMY	0.7098, 0.8274, 0.8274
CMYK	0.00, 0.41, 0.41, 0.71
HSL	0°, 25%, 23%
HSV	0°, 41%, 29%
XYZ	4.1793, 3.4391, 2.8264
YIQ	52.9700, 17.8800, 6.3600

Conversions

Conversions Part 2

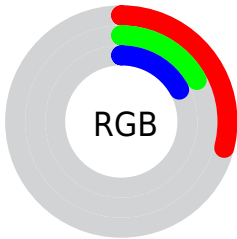
Format	Color
R_YB	74, 44, 44
Decimal	4860972
CIE Lab	21.72, 13.88, 5.82
CIE LCh	22, 15.051, 22.757
Yxy	3.4392, 0.4001, 0.3293
Android (android.graphics.Color)	4283051052 (0xFF4A2C2C)
YUV	52.9700, -4.4222, 18.4433
Hunter-Lab	18.5447, 7.7746, 3.9449

Details

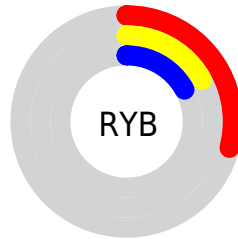
The HunterLab color **18.5447, 7.7746, 3.9449** is a dark color, and the websafe version is hex **663333**. A complement of this color would be **24.3459, -7.9739, -0.9152**, and the grayscale version is **18.8688, -1.0068, 1.0252**.

A 20% lighter version of the original color is **35.0980, 8.6172, 5.8124**, and **5.3973, 9.2430, 3.4876** is the 20% darker color. If you saturate the color by 10%, you get **16.9867, 10.2152, 4.6510**, and if you desaturate by 10%, it is **20.2517, 5.3854, 3.2679**.

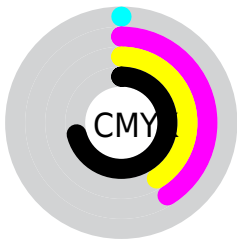
Distribution



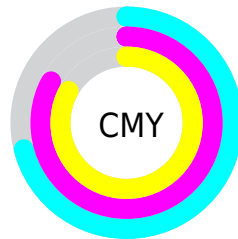
- Red (29%)
- Green (17%)
- Blue (17%)



- Red (29%)
- Yellow (17%)
- Blue (17%)



- Cyan (0%)
- Magenta (41%)
- Yellow (41%)
- Black (71%)



- Cyan (71%)
- Magenta (83%)
- Yellow (83%)

Brightness & Saturation Gradients

These gradients show how the HunterLab color 18.5447, 7.7746, 3.9449 changes by changing the brightness by 10 percent. The first figure shows a shift by +10% for each color and the second figure -10%.

Similar to the brightness gradients but the following saturation gradients show a change of the HunterLab color 18.5447, 7.7746, 3.9449 by changing the saturation by 10% instead.

■ 18.5447, 7.7746,
3.9449

■ 18.5447, 7.7746,
3.9449

■ 115.5365, 9.0311,
12.0496

■ 11.6838, 7.1162,
3.0700

■ 35.1028, 8.6579,
5.6595

■ 4.3680, 13.6124,
3.0576

■ 44.6089, 8.9341,
6.5246

0.0000, NaN, NaN

0.0000, NaN, NaN

■ 54.8455, 9.1212,
7.4025

0.0000, NaN, NaN

■ 65.7638, 9.2303,
8.2960

0.0000, NaN, NaN

■ 77.3235, 9.2698,
9.2067

0.0000, NaN, NaN

0.0000, NaN, NaN

■ 89.4908, 9.2463,

102.2369, 9.1652,
11.0831

18.5447, 7.7746,
3.9449

18.5447, 7.7746,
3.9449

16.9867, 10.2152,
4.6510

20.2517, 5.3854,
3.2679

15.6021, 12.6548,
5.3687

22.0841, 3.0763,
2.6262

14.4199, 14.9972,
6.0684

24.0240, 0.8542,
2.0214

13.4674, 17.1038,
6.7055

26.0562, -1.2831,
1.4516

12.7407, 18.8719,
7.2456

28.1687, -3.3428,
0.9137

■ 12.0663, 20.6617,
7.7969

■ 30.3518, -5.3337,
0.4039

■ 32.5973, -7.2651,
-0.0815

■ 34.8987, -9.1456,
-0.5458

■ 37.2507, -10.9831,
-0.9921

Harmonies

Analogous

The Analogous color harmony consists of three colors that are next to each other on the color wheel.



18.5452, 8.4970, -0.0693



18.5447, 7.7746, 3.9449



18.5452, 4.5989, 6.4819

Triad

The Triadic color harmony groups three colors that are evenly spaced from another and form a triangle on the color wheel.



18.5452, 7.7737, 3.9452



18.5452, -7.4459, 5.3679



18.5452, -2.0793, -9.2731

Complementary

The Complementary color scheme is a pair of colors which are on the opposite of each other on the color wheel.



18.5447, 7.7746, 3.9449



24.3459, -7.9739, -0.9152

Split Complementary

Split-complementary colors differ from the complementary color scheme. The scheme consists of three colors, the original color and two neighbors of the complement color.



18.5452, -5.9875, -6.9006



18.5447, 7.7746, 3.9449



18.5452, -8.8863, 2.0271

Square

The Square scheme is like the rectangle color scheme, but the four colors are evenly spaced on the color wheel.



18.5452, 7.7737, 3.9452



18.5452, -4.2506, 7.1546



18.5452, -8.3793, -2.5019



18.5452, 2.5116, -8.4067

Rectangle

The Rectangle color scheme consists of four colors that form a rectangle on the color wheel.



18.5447, 7.7746, 3.9449



18.5452, 1.6711, 7.3222



18.5452, -8.3793, -2.5019



18.5452, -3.5100, -8.8118

Sweetspot

The Sweet Spot groups the original color and five complimentary colors.



18.5452, 7.7737, 3.9452



31.2028, 1.6843, 2.8181



19.3692, 11.8208, -7.6891



15.6096, 0.9106, 1.4326



65.8695, -3.5146, 3.5788



17.3419, -0.9253, 0.9422

Same Dimension

The Same Dimension uses a secret algorithm to generate beautiful new colors.



18.5452, 7.7737, 3.9452



22.3457, 13.6041, 6.1741



21.8304, 1.3936, 7.0043



13.0511, 0.2438, 1.0243



16.8075, 28.7813, 10.8606



40.9154, 70.0669, 26.4385

Inverse Universe

The Inverse Universe completely reimagines the original color for something new.



24.3459, -7.9739, -0.9152



31.7097, -12.1182, -1.7729



20.3908, -2.0798, -6.3093



13.7520, -1.6260, 0.4481



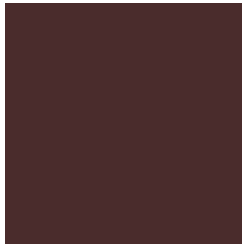
32.3432, -17.1456, -3.4138



78.7357, -41.7386, -8.3111

Previews

White Background



This preview shows how the HunterLab color 18.5447, 7.7746, 3.9449 looks on a white background.

Color Contrast Check

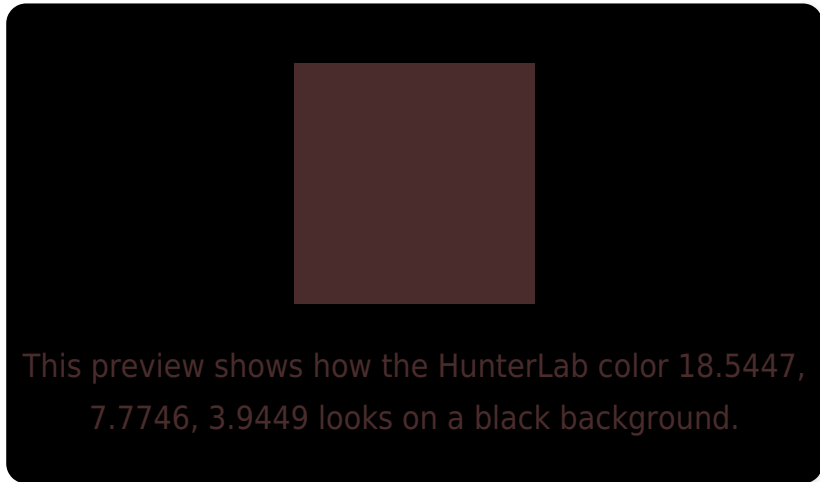
Large Text (above 18pt) WCAG AA ✓ Pass

Any Text WCAG AA ✓ Pass

Large Text (above 18pt) WCAG AAA ✓ Pass

Any Text WCAG AAA ✓ Pass

Black Background



Color Contrast Check

Large Text (above 18pt) WCAG AA × Fail

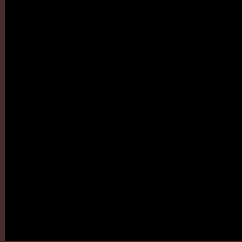
Any Text WCAG AA × Fail

Large Text (above 18pt) WCAG AAA × Fail

Any Text WCAG AAA × Fail

If you want to check with other color combinations, try the [Color Contrast Checker](#).

HunterLab 18.5447, 7.7746, 3.9449 Background



This preview shows how black text looks on a background with the HunterLab color 18.5447, 7.7746, 3.9449.

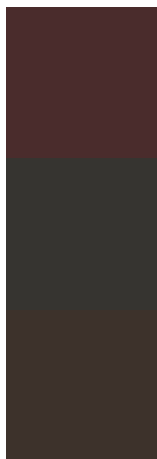


This preview shows how white text looks on a background with the HunterLab color 18.5447, 7.7746,

Color Blindness Simulation

Color vision deficiency is a very complex topic, and I could not describe the different causes any better than Wikipedia does, so if you want to learn more, you should check out their [article about color blindness](#).

Dichromacy



Original Color

18.5447, 7.7746, 3.9449

Protanopia

18.5840, -0.9905, 2.5128

Deuteranopia

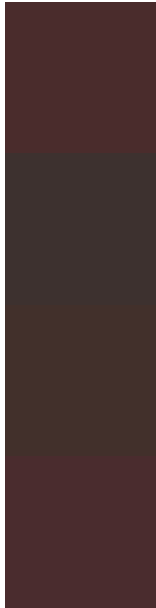
18.5680, 1.1632, 4.1640



Tritanopia

18.6076, 8.0892, 3.0385

Trichromacy



Original Color

18.5447, 7.7746, 3.9449

Protanomaly

18.4227, 2.0198, 2.7323

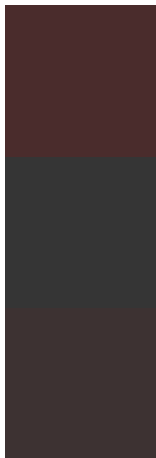
Deuteranomaly

18.5649, 3.4688, 4.2013

Tritanomaly

18.5862, 7.9821, 3.3471

Monochromacy



Original Color

18.5447, 7.7746, 3.9449

Achromatopsia

18.8683, -1.0068, 1.0252

Achromatomaly

18.7179, 1.9635, 2.0098

CSS Examples

Text

The CSS property to change the color of the text to HunterLab 18.5447, 7.7746, 3.9449 is called "color". The color property can be set on classes, ids or directly on the HTML element.

This example shows how text in the color `rgb(74, 44, 44)` looks like.

```
.text, #text, p{  
    color:rgb(74, 44, 44)  
}
```

If you want to add a text shadow in that color use the text-shadow property, you can generate a text shadow directly with our [CSS Text Shadow Generator](#).

Here you see how black text with a 4 pixel rgb(74, 44, 44) colored shadow looks like.

```
.shadow{ text-shadow: 4px 4px 2px rgb(74, 44, 44) }
```

Border

The CSS property to change the border of an element to HunterLab 18.5447, 7.7746, 3.9449 is called "border". The border property can be set on classes, ids or directly on the HTML element.

This example shows the color as border, it can be applied via the CSS property "border" or "border-color".

```
.border, #border, table{ border:4px solid rgb(74, 44, 44) }
```


If only the border color should be changed use the property border-color.

```
.border{ border-color:rgb(74, 44, 44) }
```

If you want to add a box shadow in that color use:

Here you see how a box with a 4 pixel rgb(74, 44, 44) colored shadow looks like.

```
.boxshadow{ -moz-box-shadow:4px 4px 4px  
4px rgb(74, 44, 44); -webkit-box-  
shadow:4px 4px 4px 4px rgb(74, 44, 44);  
box-shadow:4px 4px 4px 4px rgb(74, 44, 44)  
}
```

Background

The CSS property to change the background color of an element to HunterLab 18.5447, 7.7746, 3.9449 is called "background". The background property can be set on classes, ids or directly on the HTML element.

```
.background, #background, body{  
background: rgb(74, 44, 44) }
```

If only the background color should be changed can be used:

```
.background{ background-color: rgb(74, 44,  
44) }
```

This example shows the color as background, it is applied via the CSS property "background".

To optimize and compress your CSS code, you can use our [online CSS compressor and optimizer](#) based on csstidy. If you want to create a linear or radial gradient as background or border, check our [CSS Gradient Generator](#).

Hey! You found this booklet interesting? Support Converting Colors with the new Membership Option!

The pro membership hides all ads, plus gives you double the colors in the color bucket, and more awesome pro features!

[Learn more, Memberships starting at \\$2.50/m!](#)

**Follow me
on Twitter!**

@ConvertingColor