

Converting Colors

HunterLab(18.6869, 11.0267,
5.1961)

Have a look what the booklet for
HunterLab(18.6869, 11.0267,
5.1961) contains.

HunterLab(18.6957, 11.0729, 5.0612)	3
<i>Conversions</i>	4
<i>Details</i>	6
<i>Harmonies</i>	12
<i>Previews</i>	24
<i>Color Blindness Simulation</i>	28
<i>CSS Examples</i>	31

Color

**HunterLab(18.6957, 11.0729,
5.0612)**

Conversions

Conversions Part 1

Format	Color
Hex	512929
RGB	81, 41, 41
RGB Percent	32%, 16%, 16%
CMY	0.6824, 0.8392, 0.8392
CMYK	0.00, 0.49, 0.49, 0.68
HSL	0°, 33%, 24%
HSV	0°, 49%, 32%
XYZ	4.5865, 3.4953, 2.5307
YIQ	52.9600, 23.8400, 8.4800

Conversions

Conversions Part 2

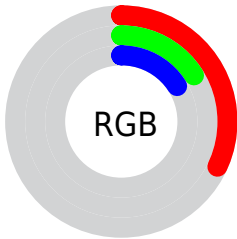
Format	Color
RYB	81, 41, 41
Decimal	5318953
CIELab	21.93, 18.55, 8.32
CIELCh	22, 20.330, 24.144
Yxy	3.4955, 0.4322, 0.3294
Android (android.graphics.Color)	4283509033 (0xFF512929)
YUV	52.9600, -5.8963, 24.5911
Hunter-Lab	18.6957, 11.0729, 5.0612

Details

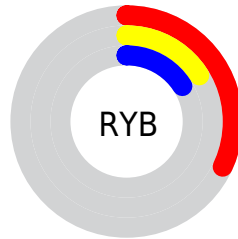
The HunterLab color **18.6957, 11.0729, 5.0612** is a dark color, and the websafe version is hex **663333**. A complement of this color would be **26.3629, -9.9656, -1.4372**, and the grayscale version is **18.8688, -1.0068, 1.0252**.

A 20% lighter version of the original color is **35.2048, 12.4367, 7.0834**, and **6.1243, 10.4880, 3.9574** is the 20% darker color. If you saturate the color by 10%, you get **17.1491, 13.7851, 5.8592**, and if you desaturate by 10%, it is **20.4379, 8.3601, 4.2784**.

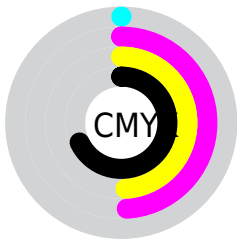
Distribution



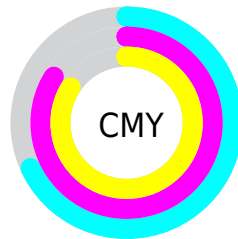
- Red (32%)
- Green (16%)
- Blue (16%)



- Red (32%)
- Yellow (16%)
- Blue (16%)



- Cyan (0%)
- Magenta (49%)
- Yellow (49%)
- Black (68%)



- Cyan (68%)
- Magenta (84%)
- Yellow (84%)

Brightness & Saturation Gradients

These gradients show how the HunterLab color 18.6957, 11.0729, 5.0612 changes by changing the brightness by 10 percent. The first figure shows a shift by +10% for each color and the second figure -10%.

Similar to the brightness gradients but the following saturation gradients show a change of the HunterLab color 18.6957, 11.0729, 5.0612 by changing the saturation by 10% instead.

■ 18.6957, 11.0729,
5.0612

■ 18.6957, 11.0729,
5.0612

■ 115.8141, 14.3212,
14.4458

■ 11.8133, 10.1368,
3.9711

■ 35.2895, 12.4767,
7.1508

■ 4.6200, 17.2512,
3.2340

■ 44.8112, 12.9931,
8.1742

0.0000, NaN, NaN

0.0000, NaN, NaN

■ 55.0622, 13.4084,
9.1973

0.0000, NaN, NaN

■ 65.9939, 13.7350,
10.2256

0.0000, NaN, NaN

■ 77.5663, 13.9826,
11.2626

0.0000, NaN, NaN

0.0000, NaN, NaN

■ 89.7458, 14.1588,

12.3106

0.0000, NaN, NaN

102.5034, 14.2699,
13.3713

18.6957, 11.0729,
5.0612

18.6957, 11.0729,
5.0612

17.1491, 13.7851,
5.8592

20.4379, 8.3601,
4.2784

15.8289, 16.3930,
6.6379

22.3449, 5.7110,
3.5281

14.7670, 18.7383,
7.3472

24.3921, 3.1522,
2.8183

13.9820, 20.6461,
7.9298

26.5586, 0.6916,
2.1499

13.2717, 22.5243,
8.5081

28.8278, -1.6741,
1.5207

■ 13.2266, 22.6491,
8.5467

■ 31.1861, -3.9534,
0.9269

■ 33.6225, -6.1566,
0.3643

■ 36.1282, -8.2941,
-0.1714

■ 38.6959, -10.3759,
-0.6839

Harmonies

Analogous

The Analogous color harmony consists of three colors that are next to each other on the color wheel.



18.6962, 12.2899, -0.1677



18.6957, 11.0729, 5.0612



18.6962, 6.4503, 8.0356

Triad

The Triadic color harmony groups three colors that are evenly spaced from another and form a triangle on the color wheel.



18.6962, 11.0718, 5.0615



18.6962, -9.6556, 6.4837



18.6962, -2.1907, -14.0012

Complementary

The Complementary color scheme is a pair of colors which are on the opposite of each other on the color wheel.



18.6957, 11.0729, 5.0612



26.3629, -9.9656, -1.4372

Split Complementary

Split-complementary colors differ from the complementary color scheme. The scheme consists of three colors, the original color and two neighbors of the complement color.



18.6962, -7.4376, -10.5983



18.6957, 11.0729, 5.0612



18.6962, -11.3744, 2.1302

Square

The Square scheme is like the rectangle color scheme, but the four colors are evenly spaced on the color wheel.



18.6962, 11.0718, 5.0615



18.6962, -5.5970, 8.6514



18.6962, -10.6181, -4.1973



18.6962, 4.0923, -12.4446

Rectangle

The Rectangle color scheme consists of four colors that form a rectangle on the color wheel.



18.6957, 11.0729, 5.0612



18.6962, 2.3457, 8.9309



18.6962, -10.6181, -4.1973



18.6962, -4.1232, -13.3726

Sweetspot

The Sweet Spot groups the original color and five complimentary colors.



18.6962, 11.0718, 5.0615



32.8907, 2.8555, 3.3326



19.8225, 16.3819, -10.7827



16.5766, 1.6547, 1.7518



67.9972, -3.6282, 3.6944



19.0543, -1.0167, 1.0353

Same Dimension

The Same Dimension uses a secret algorithm to generate beautiful new colors.



18.6962, 11.0718, 5.0615



22.0629, 18.5546, 7.8128



22.9062, 2.4803, 8.7280



13.8019, 0.2763, 1.0894



17.2517, 29.5422, 11.1476



41.4300, 70.9485, 26.7710

Inverse Universe

The Inverse Universe completely reimagines the original color for something new.



26.3629, -9.9656, -1.4372



33.9595, -14.6304, -2.4526



20.9833, -2.1119, -9.1030



14.5565, -1.7369, 0.4690



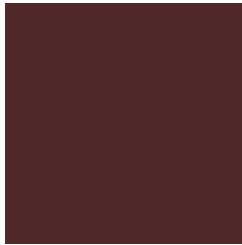
33.1983, -17.5991, -3.5037



79.7268, -42.2645, -8.4146

Previews

White Background



This preview shows how the HunterLab color 18.6957, 11.0729, 5.0612 looks on a white background.

Color Contrast Check

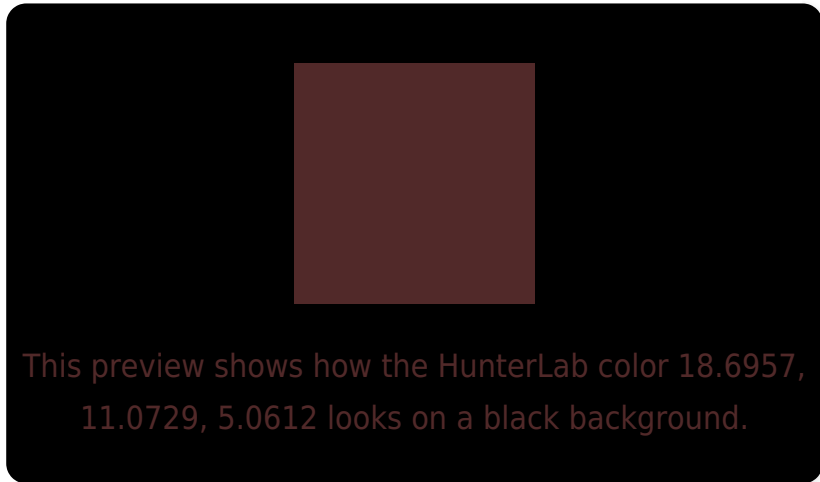
Large Text (above 18pt) WCAG AA ✓ Pass

Any Text WCAG AA ✓ Pass

Large Text (above 18pt) WCAG AAA ✓ Pass

Any Text WCAG AAA ✓ Pass

Black Background



Color Contrast Check

Large Text (above 18pt) WCAG AA × Fail

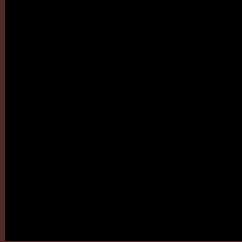
Any Text WCAG AA × Fail

Large Text (above 18pt) WCAG AAA × Fail

Any Text WCAG AAA × Fail

If you want to check with other color combinations, try the [Color Contrast Checker](#).

HunterLab 18.6957, 11.0729, 5.0612 Background



This preview shows how black text looks on a background with the HunterLab color 18.6957, 11.0729, 5.0612.

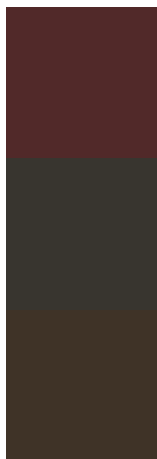


This preview shows how white text looks on a background with the HunterLab color 18.6957, 11.0729,

Color Blindness Simulation

Color vision deficiency is a very complex topic, and I could not describe the different causes any better than Wikipedia does, so if you want to learn more, you should check out their [article about color blindness](#).

Dichromacy



Original Color

18.6957, 11.0729, 5.0612

Protanopia

18.9531, -0.9859, 3.2487

Deuteranopia

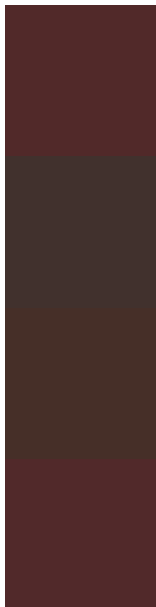
18.8968, 0.9357, 5.6381



Tritanopia

18.7340, 11.2576, 4.5077

Trichromacy



Original Color

18.6957, 11.0729, 5.0612

Protanomaly

18.7347, 2.9618, 3.7393

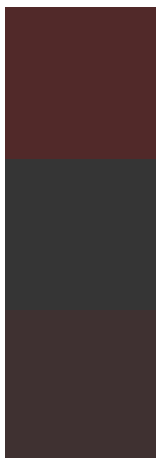
Deuteranomaly

18.6771, 4.8300, 5.2205

Tritanomaly

18.7146, 11.1642, 4.7876

Monochromacy



Original Color

18.6957, 11.0729, 5.0612

Achromatopsia

18.8683, -1.0068, 1.0252

Achromatomaly

18.6417, 2.8304, 2.2948

CSS Examples

Text

The CSS property to change the color of the text to HunterLab 18.6957, 11.0729, 5.0612 is called "color". The color property can be set on classes, ids or directly on the HTML element.

This example shows how text in the color `rgb(81, 41, 41)` looks like.

```
.text, #text, p{  
    color:rgb(81, 41, 41)  
}
```

If you want to add a text shadow in that color use the text-shadow property, you can generate a text shadow directly with our [CSS Text Shadow Generator](#).

Here you see how black text with a 4 pixel rgb(81, 41, 41) colored shadow looks like.

```
.shadow{ text-shadow: 4px 4px 2px rgb(81, 41, 41) }
```

Border

The CSS property to change the border of an element to HunterLab 18.6957, 11.0729, 5.0612 is called "border". The border property can be set on classes, ids or directly on the HTML element.

This example shows the color as border, it can be applied via the CSS property "border" or "border-color".

```
.border, #border, table{ border:4px solid rgb(81, 41, 41) }
```


If only the border color should be changed use the property `border-color`.

```
.border{ border-color:rgb(81, 41, 41) }
```

If you want to add a box shadow in that color use:

Here you see how a box with a 4 pixel `rgb(81, 41, 41)` colored shadow looks like.

```
.boxshadow{ -moz-box-shadow:4px 4px 4px  
4px rgb(81, 41, 41); -webkit-box-  
shadow:4px 4px 4px 4px rgb(81, 41, 41);  
box-shadow:4px 4px 4px 4px rgb(81, 41, 41)  
}
```

Background

The CSS property to change the background color of an element to HunterLab 18.6957, 11.0729, 5.0612 is called "background". The background property can be set on classes, ids or directly on the HTML element.

```
.background, #background, body{  
background: rgb(81, 41, 41) }
```

If only the background color should be changed can be used:

```
.background{ background-color: rgb(81, 41,  
41) }
```

This example shows the color as background, it is applied via the CSS property "background".

To optimize and compress your CSS code, you can use our [online CSS compressor and optimizer](#) based on csstidy. If you want to create a linear or radial gradient as background or border, check our [CSS Gradient Generator](#).

Hey! You found this booklet interesting? Support Converting Colors with the new Membership Option!

The pro membership hides all ads, plus gives you double the colors in the color bucket, and more awesome pro features!

[Learn more, Memberships starting at \\$2.50/m!](#)

**Follow me
on Twitter!**

@ConvertingColor