

Converting Colors

HunterLab(18.7042, 7.3412,
3.1292)

Have a look what the booklet for
HunterLab(18.7042, 7.3412, 3.1292)
contains.

HunterLab(18.7042, 7.3412, 3.1292)	3
<i>Conversions</i>	4
<i>Details</i>	6
<i>Harmonies</i>	12
<i>Previews</i>	24
<i>Color Blindness Simulation</i>	28
<i>CSS Examples</i>	31

Color

**HunterLab(18.7042, 7.3412,
3.1292)**

Conversions

Conversions Part 1

Format	Color
Hex	492D2F
RGB	73, 45, 47
RGB Percent	29%, 18%, 18%
CMY	0.7137, 0.8235, 0.8157
CMYK	0.00, 0.38, 0.36, 0.71
HSL	356°, 24%, 23%
HSV	356°, 38%, 29%
XYZ	4.1991, 3.4985, 3.1433
YIQ	53.6000, 16.0460, 6.5580

Conversions

Conversions Part 2

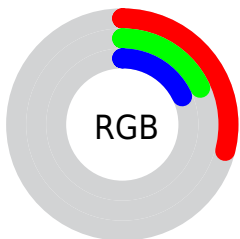
Format	Color
RYB	73, 45, 47
Decimal	4795695
CIELab	21.94, 13.23, 4.06
CIELCh	22, 13.835, 17.062
Yxy	3.4986, 0.3873, 0.3227
Android (android.graphics.Color)	4282985775 (0xFF492D2F)
YUV	53.6000, -3.2538, 17.0138
Hunter-Lab	18.7042, 7.3412, 3.1292

Details

The HunterLab color **18.7042, 7.3412, 3.1292** is a dark color, and the websafe version is hex **663333**. A complement of this color would be **24.0374, -7.8898, -0.0310**, and the grayscale version is **19.0784, -1.0180, 1.0366**.

A 20% lighter version of the original color is **35.3319, 8.3187, 4.5389**, and **5.3973, 9.2430, 3.4876** is the 20% darker color. If you saturate the color by 10%, you get **17.1419, 9.7596, 3.7217**, and if you desaturate by 10%, it is **20.4053, 4.9662, 2.5988**.

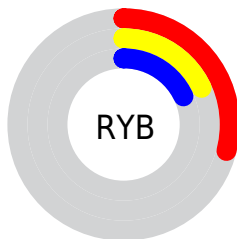
Distribution



Red (29%)

Green (18%)

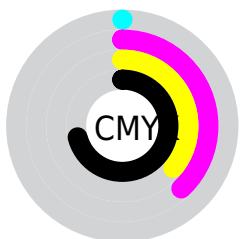
Blue (18%)



Red (29%)

Yellow (18%)

Blue (18%)

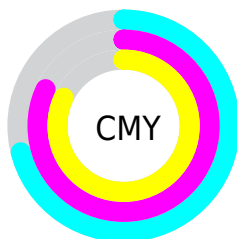


Cyan (0%)

Magenta (38%)

Yellow (36%)

Black (71%)



Cyan (71%)

Magenta (82%)

Yellow (82%)

Brightness & Saturation Gradients

These gradients show how the HunterLab color 18.7042, 7.3412, 3.1292 changes by changing the brightness by 10 percent. The first figure shows a shift by +10% for each color and the second figure -10%.

Similar to the brightness gradients but the following saturation gradients show a change of the HunterLab color 18.7042, 7.3412, 3.1292 by changing the saturation by 10% instead.

■ 18.7042, 7.3412,
3.1292

■ 18.7042, 7.3412,
3.1292

■ 115.8296, 8.2949,
10.3576

■ 11.8206, 6.7285,
2.4146

■ 35.3000, 8.1427,
4.5882

■ 4.6337, 12.1904,
3.2436

■ 44.8225, 8.3822,
5.3450

0.0000, NaN, NaN

0.0000, NaN, NaN

■ 55.0743, 8.5347,
6.1235

0.0000, NaN, NaN

■ 66.0068, 8.6110,
6.9246

0.0000, NaN, NaN

■ 77.5800, 8.6193,
7.7486

0.0000, NaN, NaN

0.0000, NaN, NaN

■ 89.7601, 8.5660,

102.5184, 8.4565,
9.4653

18.7042, 7.3412,
3.1292

18.7042, 7.3412,
3.1292

17.1419, 9.7596,
3.7217

20.4053, 4.9662,
2.5988

15.7410, 12.1756,
4.3701

22.2235, 2.6603,
2.1279

14.5290, 14.5037,
5.0581

24.1422, 0.4295,
1.7120

13.5326, 16.6181,
5.7537

26.1477, -1.7276,
1.3451

12.7686, 18.3814,
6.4051

28.2290, -3.8172,
1.0208

■ 12.0683, 20.2264,
6.8980

■ 30.3769, -5.8469,
0.7333

■ 11.9494, 20.5593,
6.9808

■ 32.5840, -7.8247,
0.4774

■ 34.8444, -9.7582,
0.2488

■ 37.1529, -11.6543,
0.0436

Harmonies

Analogous

The Analogous color harmony consists of three colors that are next to each other on the color wheel.



18.7046, 7.5158, -0.7799



18.7042, 7.3412, 3.1292



18.7046, 4.8099, 5.8036

Triad

The Triadic color harmony groups three colors that are evenly spaced from another and form a triangle on the color wheel.



18.7046, 7.3403, 3.1295



18.7046, -6.5378, 5.5216



18.7046, -2.7685, -8.0942

Complementary

The Complementary color scheme is a pair of colors which are on the opposite of each other on the color wheel.



18.7042, 7.3412, 3.1292



24.0374, -7.8898, -0.0310

Split Complementary

Split-complementary colors differ from the complementary color scheme. The scheme consists of three colors, the original color and two neighbors of the complement color.



18.7046, -6.1756, -5.5044



18.7042, 7.3412, 3.1292



18.7046, -8.2194, 2.6537

Square

The Square scheme is like the rectangle color scheme, but the four colors are evenly spaced on the color wheel.



18.7046, 7.3403, 3.1295



18.7046, -3.3040, 6.9616



18.7046, -8.0929, -1.3723



18.7046, 1.4233, -7.8873

Rectangle

The Rectangle color scheme consists of four colors that form a rectangle on the color wheel.



18.7042, 7.3412, 3.1292



18.7046, 2.2447, 6.7890



18.7046, -8.0929, -1.3723



18.7046, -4.0357, -7.5015

Sweetspot

The Sweet Spot groups the original color and five complimentary colors.



18.7046, 7.3403, 3.1295



30.3752, 1.7373, 2.4414



19.1964, 10.2516, -7.4603



15.6206, 0.9702, 1.2741



65.8695, -3.5146, 3.5788



17.3419, -0.9253, 0.9422

Same Dimension

The Same Dimension uses a secret algorithm to generate beautiful new colors.



18.7046, 7.3403, 3.1295



22.4237, 12.5057, 4.7933



21.2120, 2.1616, 6.1687



12.3131, 0.2425, 0.8787



16.4123, 28.2013, 9.8706



40.4484, 69.3631, 25.4086

Inverse Universe

The Inverse Universe completely reimagines the original color for something new.



18.7046, 7.3403, 3.1295



22.4237, 12.5057, 4.7933



21.0054, -3.0101, -4.9012



12.3131, 0.2425, 0.8787



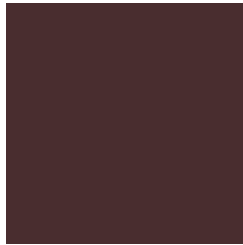
16.4123, 28.2013, 9.8706



40.4484, 69.3631, 25.4086

Previews

White Background



This preview shows how the HunterLab color 18.7042, 7.3412, 3.1292 looks on a white background.

Color Contrast Check

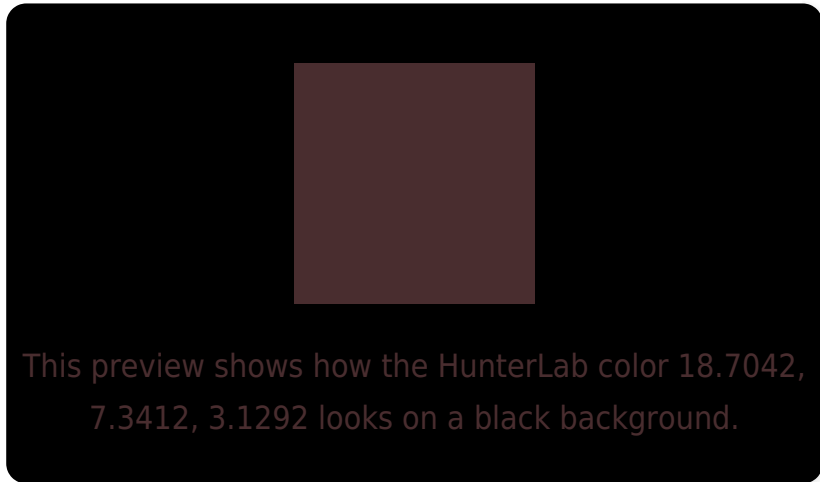
Large Text (above 18pt) WCAG AA ✓ Pass

Any Text WCAG AA ✓ Pass

Large Text (above 18pt) WCAG AAA ✓ Pass

Any Text WCAG AAA ✓ Pass

Black Background



Color Contrast Check

Large Text (above 18pt) WCAG AA × Fail

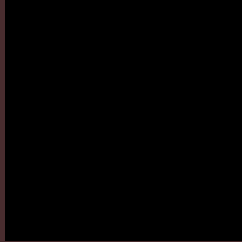
Any Text WCAG AA × Fail

Large Text (above 18pt) WCAG AAA × Fail

Any Text WCAG AAA × Fail

If you want to check with other color combinations, try the [Color Contrast Checker](#).

HunterLab 18.7042, 7.3412, 3.1292 Background



This preview shows how black text looks on a background with the HunterLab color 18.7042, 7.3412, 3.1292.

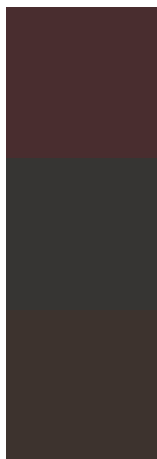


This preview shows how white text looks on a background with the HunterLab color 18.7042, 7.3412,

Color Blindness Simulation

Color vision deficiency is a very complex topic, and I could not describe the different causes any better than Wikipedia does, so if you want to learn more, you should check out their [article about color blindness](#).

Dichromacy



Original Color

18.7042, 7.3412, 3.1292

Protanopia

18.8931, -1.0160, 1.7954

Deuteranopia

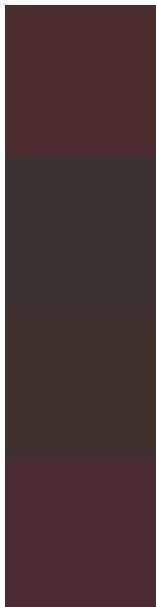
18.8600, 1.0806, 3.5147



Tritanopia

18.7260, 7.4509, 2.8157

Trichromacy



Original Color

18.7042, 7.3412, 3.1292

Protanomaly

18.7179, 1.9635, 2.0098

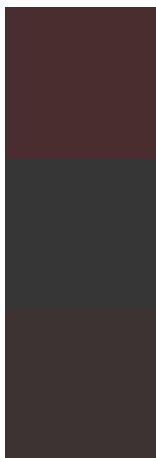
Deuteranomaly

18.7555, 3.0712, 3.4399

Tritanomaly

18.7260, 7.4509, 2.8157

Monochromacy



Original Color

18.7042, 7.3412, 3.1292

Achromatopsia

19.2066, -1.0248, 1.0435

Achromatomaly

18.9704, 1.6714, 1.9301

CSS Examples

Text

The CSS property to change the color of the text to HunterLab 18.7042, 7.3412, 3.1292 is called "color". The color property can be set on classes, ids or directly on the HTML element.

This example shows how text in the color `rgb(73, 45, 47)` looks like.

```
.text, #text, p{  
    color:rgb(73, 45, 47)  
}
```

If you want to add a text shadow in that color use the text-shadow property, you can generate a text shadow directly with our [CSS Text Shadow Generator](#).

Here you see how black text with a 4 pixel rgb(73, 45, 47) colored shadow looks like.

```
.shadow{ text-shadow: 4px 4px 2px rgb(73, 45, 47) }
```

Border

The CSS property to change the border of an element to HunterLab 18.7042, 7.3412, 3.1292 is called "border".

The border property can be set on classes, ids or directly on the HTML element.

This example shows the color as border, it can be applied via the CSS property "border" or "border-color".

```
.border, #border, table{ border:4px solid rgb(73, 45, 47) }
```


If only the border color should be changed use the property `border-color`.

```
.border{ border-color:rgb(73, 45, 47) }
```

If you want to add a box shadow in that color use:

Here you see how a box with a 4 pixel `rgb(73, 45, 47)` colored shadow looks like.

```
.boxshadow{ -moz-box-shadow:4px 4px 4px  
4px rgb(73, 45, 47); -webkit-box-  
shadow:4px 4px 4px 4px rgb(73, 45, 47);  
box-shadow:4px 4px 4px 4px rgb(73, 45, 47)  
}
```

Background

The CSS property to change the background color of an element to HunterLab 18.7042, 7.3412, 3.1292 is called "background". The background property can be set on classes, ids or directly on the HTML element.

```
.background, #background, body{  
background: rgb(73, 45, 47) }
```

If only the background color should be changed can be used:

```
.background{ background-color: rgb(73, 45,  
47) }
```

This example shows the color as background, it is applied via the CSS property "background".

To optimize and compress your CSS code, you can use our [online CSS compressor and optimizer](#) based on csstidy. If you want to create a linear or radial gradient as background or border, check our [CSS Gradient Generator](#).

Hey! You found this booklet interesting? Support Converting Colors with the new Membership Option!

The pro membership hides all ads, plus gives you double the colors in the color bucket, and more awesome pro features!

[Learn more, Memberships starting at \\$2.50/m!](#)

**Follow me
on Twitter!**

@ConvertingColor