

Converting Colors

HunterLab(18.7086, 1.8644,
5.9537)

Have a look what the booklet for
HunterLab(18.7086, 1.8644, 5.9537)
contains.

HunterLab(18.8111, 1.7583, 6.1055)	3
<i>Conversions</i>	4
<i>Details</i>	6
<i>Harmonies</i>	12
<i>Previews</i>	24
<i>Color Blindness Simulation</i>	28
<i>CSS Examples</i>	31

Color

**HunterLab(18.8111, 1.7583,
6.1055)**

Conversions

Conversions Part 1

Format	Color
Hex	413225
RGB	65, 50, 37
RGB Percent	25%, 20%, 15%
CMY	0.7451, 0.8039, 0.8549
CMYK	0.00, 0.23, 0.43, 0.75
HSL	28°, 27%, 20%
HSV	28°, 43%, 25%
XYZ	3.6545, 3.5386, 2.2407
YIQ	53.0030, 13.1130, -0.8630

Conversions

Conversions Part 2

Format	Color
RYB	65, 61, 37
Decimal	4272677
CIELab	22.08, 4.61, 10.85
CIELCh	22, 11.791, 67.008
Yxy	3.5387, 0.3874, 0.3751
Android (android.graphics.Color)	4282462757 (0xFF413225)
YUV	53.0030, -7.8895, 10.5214
Hunter-Lab	18.8111, 1.7583, 6.1055

Details

The HunterLab color **18.8111, 1.7583, 6.1055** is a dark color, and the websafe version is hex **333333**. A complement of this color would be **17.9745, -2.2092, -5.4589**, and the grayscale version is **18.8923, -1.0080, 1.0265**.

A 20% lighter version of the original color is **35.4293, 1.7083, 8.5025**, and **4.8534, 3.7135, 3.0557** is the 20% darker color. If you saturate the color by 10%, you get **17.9304, 2.6504, 6.9217**, and if you desaturate by 10%, it is **19.7293, 0.9445, 5.1597**.

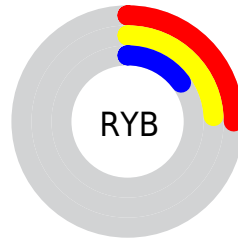
Distribution



Red (25%)

Green (20%)

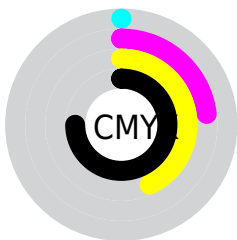
Blue (15%)



Red (25%)

Yellow (24%)

Blue (15%)

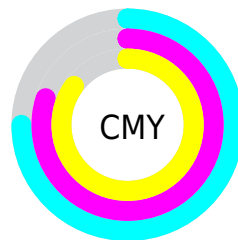


Cyan (0%)

Magenta (23%)

Yellow (43%)

Black (75%)



Cyan (75%)

Magenta (80%)

Yellow (85%)

Brightness & Saturation Gradients

These gradients show how the HunterLab color 18.8111, 1.7583, 6.1055 changes by changing the brightness by 10 percent. The first figure shows a shift by +10% for each color and the second figure -10%.

Similar to the brightness gradients but the following saturation gradients show a change of the HunterLab color 18.8111, 1.7583, 6.1055 by changing the saturation by 10% instead.

■ 18.8111, 1.7583,
6.1055

■ 18.8111, 1.7583,
6.1055

■ 116.0258, -1.2296,
16.8263

■ 11.9124, 1.7594,
4.8659

■ 35.4320, 1.4864,
8.5893

■ 4.8031, 3.9217,
3.3622

■ 44.9655, 1.2467,
9.7784

0.0000, NaN, NaN

0.0000, NaN, NaN

■ 55.2274, 0.9495,
10.9531

0.0000, NaN, NaN

■ 66.1694, 0.6009,
12.1219

0.0000, NaN, NaN

■ 77.7516, 0.2053,
13.2902

0.0000, NaN, NaN

0.0000, NaN, NaN

■ 89.9403, -0.2336,

14.4620

0.0000, NaN, NaN

102.7067, -0.7127,
15.6400

18.8111, 1.7583,
6.1055

18.8111, 1.7583,
6.1055

17.9304, 2.6504,
6.9217

19.7293, 0.9445,
5.1597

17.0889, 3.6253,
7.5953

20.6807, 0.2075,
4.0956

16.2902, 4.6826,
8.1142

21.6634, -0.4576,
2.9246

15.5379, 5.8198,
8.4680

22.6748, -1.0556,
1.6570

14.8288, 6.9990,
8.7432

23.7129, -1.5912,
0.3021

■ 14.3583, 7.8032,
8.9841

■ 24.7758, -2.0690,
-1.1321

■ 25.8618, -2.4936,
-2.6382

■ 26.9693, -2.8691,
-4.2098

■ 28.0969, -3.1995,
-5.8413

Harmonies

Analogous

The Analogous color harmony consists of three colors that are next to each other on the color wheel.



18.8115, 4.8081, 4.5516



18.8111, 1.7583, 6.1055



18.8115, -1.8366, 6.4287

Triad

The Triadic color harmony groups three colors that are evenly spaced from another and form a triangle on the color wheel.



18.8115, 1.7576, 6.1058



18.8115, -7.3556, 0.2081



18.8115, 3.3165, -4.9852

Complementary

The Complementary color scheme is a pair of colors which are on the opposite of each other on the color wheel.



18.8111, 1.7583, 6.1055



17.9745, -2.2092, -5.4589

Split Complementary

Split-complementary colors differ from the complementary color scheme. The scheme consists of three colors, the original color and two neighbors of the complement color.



18.8115, -0.1582, -6.6954



18.8111, 1.7583, 6.1055



18.8115, -6.1876, -3.3550

Square

The Square scheme is like the rectangle color scheme, but the four colors are evenly spaced on the color wheel.



18.8115, 1.7576, 6.1058



18.8115, -6.9263, 3.4043



18.8115, -3.6163, -6.0489



18.8115, 5.7541, -1.7148

Rectangle

The Rectangle color scheme consists of four colors that form a rectangle on the color wheel.



18.8111, 1.7583, 6.1055



18.8115, -4.0271, 5.9699



18.8115, -3.6163, -6.0489



18.8115, 2.2214, -5.7870

Sweetspot

The Sweet Spot groups the original color and five complimentary colors.



18.8115, 1.7576, 6.1058



28.0458, -0.5551, 3.8690



16.4272, 8.9625, -1.6178



14.6430, -0.2414, 2.1256



63.7533, -3.4017, 3.4638



15.6573, -0.8354, 0.8507

Same Dimension

The Same Dimension uses a secret algorithm to generate beautiful new colors.



18.8115, 1.7576, 6.1058



23.1394, 3.5741, 9.0871



22.0889, -3.7070, 8.8481



11.9094, -0.3967, 1.2715



21.0054, 13.0149, 13.1713



50.8447, 36.8270, 31.9750

Inverse Universe

The Inverse Universe completely reimagines the original color for something new.



17.9745, -2.2092, -5.4589



21.7928, -2.7499, -9.5227



14.7884, 3.3678, -10.8787



11.8168, -0.8408, -0.0079



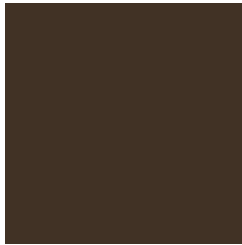
18.1900, 1.3042, -25.5514



43.4570, 7.1258, -69.7001

Previews

White Background



This preview shows how the HunterLab color 18.8111, 1.7583, 6.1055 looks on a white background.

Color Contrast Check

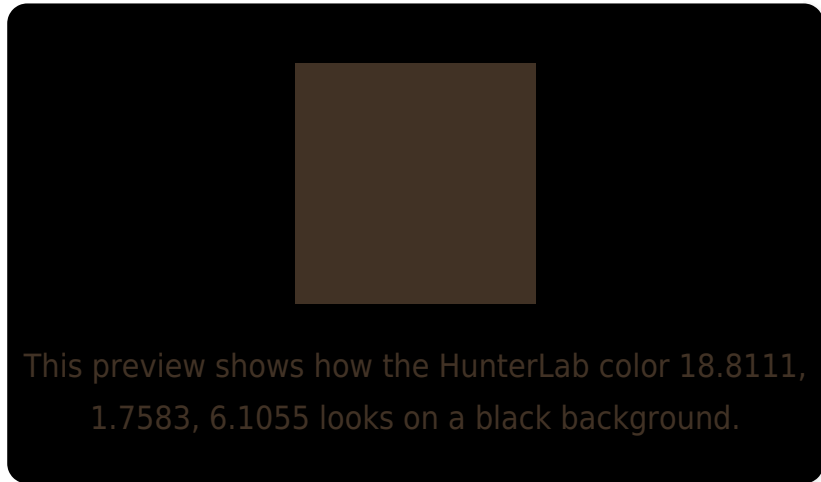
Large Text (above 18pt) WCAG AA ✓ Pass

Any Text WCAG AA ✓ Pass

Large Text (above 18pt) WCAG AAA ✓ Pass

Any Text WCAG AAA ✓ Pass

Black Background



Color Contrast Check

Large Text (above 18pt) WCAG AA × Fail

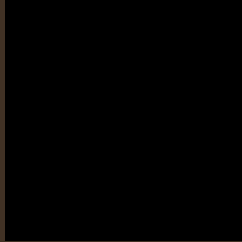
Any Text WCAG AA × Fail

Large Text (above 18pt) WCAG AAA × Fail

Any Text WCAG AAA × Fail

If you want to check with other color combinations, try the [Color Contrast Checker](#).

HunterLab 18.8111, 1.7583, 6.1055 Background



This preview shows how black text looks on a background with the HunterLab color 18.8111, 1.7583, 6.1055.

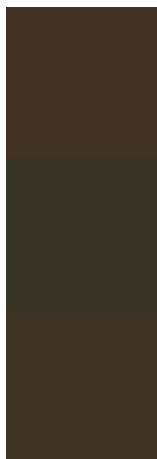


This preview shows how white text looks on a background with the HunterLab color 18.8111, 1.7583,

Color Blindness Simulation

Color vision deficiency is a very complex topic, and I could not describe the different causes any better than Wikipedia does, so if you want to learn more, you should check out their [article about color blindness](#).

Dichromacy



Original Color

18.8111, 1.7583, 6.1055

Protanopia

18.8574, -1.6658, 5.8252

Deuteranopia

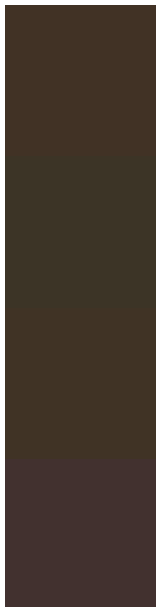
18.8626, 0.7517, 6.1347



Tritanopia

18.7619, 4.4952, 1.3730

Trichromacy



Original Color

18.8111, 1.7583, 6.1055

Protanomaly

18.8589, -0.4309, 5.8482

Deuteranomaly

18.9505, 1.0485, 6.2195

Tritanomaly

18.8683, 3.4801, 3.2368

Monochromacy



Original Color

18.8111, 1.7583, 6.1055

Achromatopsia

18.8683, -1.0068, 1.0252

Achromatomaly

18.7912, -0.3174, 3.0881

CSS Examples

Text

The CSS property to change the color of the text to HunterLab 18.8111, 1.7583, 6.1055 is called "color". The color property can be set on classes, ids or directly on the HTML element.

This example shows how text in the color `rgb(65, 50, 37)` looks like.

```
.text, #text, p{  
    color:rgb(65, 50, 37)  
}
```

If you want to add a text shadow in that color use the text-shadow property, you can generate a text shadow directly with our [CSS Text Shadow Generator](#).

Here you see how black text with a 4 pixel rgb(65, 50, 37) colored shadow looks like.

```
.shadow{ text-shadow: 4px 4px 2px rgb(65, 50, 37) }
```

Border

The CSS property to change the border of an element to HunterLab 18.8111, 1.7583, 6.1055 is called "border". The border property can be set on classes, ids or directly on the HTML element.

This example shows the color as border, it can be applied via the CSS property "border" or "border-color".

```
.border, #border, table{ border:4px solid rgb(65, 50, 37) }
```


If only the border color should be changed use the property `border-color`.

```
.border{ border-color:rgb(65, 50, 37) }
```

If you want to add a box shadow in that color use:

Here you see how a box with a 4 pixel `rgb(65, 50, 37)` colored shadow looks like.

```
.boxshadow{ -moz-box-shadow:4px 4px 4px  
4px rgb(65, 50, 37); -webkit-box-  
shadow:4px 4px 4px 4px rgb(65, 50, 37);  
box-shadow:4px 4px 4px 4px rgb(65, 50, 37)  
}
```

Background

The CSS property to change the background color of an element to HunterLab 18.8111, 1.7583, 6.1055 is called "background". The background property can be set on classes, ids or directly on the HTML element.

```
.background, #background, body{  
background: rgb(65, 50, 37) }
```

If only the background color should be changed can be used:

```
.background{ background-color: rgb(65, 50,  
37) }
```

This example shows the color as background, it is applied via the CSS property "background".

To optimize and compress your CSS code, you can use our [online CSS compressor and optimizer](#) based on csstidy. If you want to create a linear or radial gradient as background or border, check our [CSS Gradient Generator](#).

Hey! You found this booklet interesting? Support Converting Colors with the new Membership Option!

The pro membership hides all ads, plus gives you double the colors in the color bucket, and more awesome pro features!

[Learn more, Memberships starting at \\$2.50/m!](#)

**Follow me
on Twitter!**

@ConvertingColor