

Converting Colors

HunterLab(18.7486, 4.7377,
2.9418)

Have a look what the booklet for
HunterLab(18.7486, 4.7377, 2.9418)
contains.

HunterLab(18.8580, 4.6175, 2.9094)	3
<i>Conversions</i>	4
<i>Details</i>	6
<i>Harmonies</i>	12
<i>Previews</i>	24
<i>Color Blindness Simulation</i>	28
<i>CSS Examples</i>	31

Color

**HunterLab(18.8580, 4.6175,
2.9094)**

Conversions

Conversions Part 1

Format	Color
Hex	443030
RGB	68, 48, 48
RGB Percent	27%, 19%, 19%
CMY	0.7333, 0.8118, 0.8118
CMYK	0.00, 0.29, 0.29, 0.73
HSL	0°, 17%, 23%
HSV	0°, 29%, 27%
XYZ	3.9743, 3.5562, 3.2733
YIQ	53.9800, 11.9200, 4.2400

Conversions

Conversions Part 2

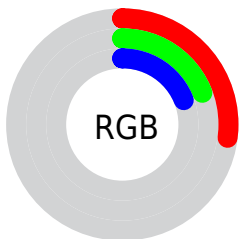
Format	Color
R_{YB}	68, 48, 48
Decimal	4468784
CIE Lab	22.15, 9.12, 3.58
CIE LCh	22, 9.798, 21.450
Yxy	3.5564, 0.3679, 0.3292
Android (android.graphics.Color)	4282658864 (0xFF443030)
YUV	53.9800, -2.9481, 12.2955
Hunter-Lab	18.8580, 4.6175, 2.9094

Details

The HunterLab color **18.8580, 4.6175, 2.9094** is a dark color, and the websafe version is hex **333333**. A complement of this color would be **22.7592, -5.8734, -0.3256**, and the grayscale version is **19.2070, -1.0248, 1.0436**.

A 20% lighter version of the original color is **35.4901, 5.0834, 4.2666**, and **4.8271, 8.2666, 3.1192** is the 20% darker color. If you saturate the color by 10%, you get **17.2926, 6.7701, 3.5185**, and if you desaturate by 10%, it is **20.5339, 2.5361, 2.3332**.

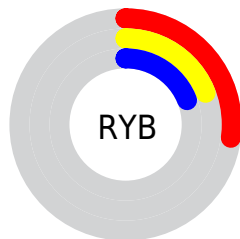
Distribution



Red (27%)

Green (19%)

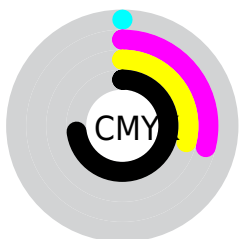
Blue (19%)



Red (27%)

Yellow (19%)

Blue (19%)

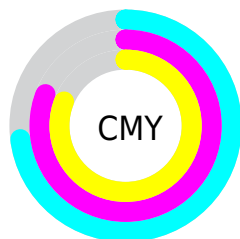


Cyan (0%)

Magenta (29%)

Yellow (29%)

Black (73%)



Cyan (73%)

Magenta (81%)

Yellow (81%)

Brightness & Saturation Gradients

These gradients show how the HunterLab color 18.8580, 4.6175, 2.9094 changes by changing the brightness by 10 percent. The first figure shows a shift by +10% for each color and the second figure -10%.

Similar to the brightness gradients but the following saturation gradients show a change of the HunterLab color 18.8580, 4.6175, 2.9094 by changing the saturation by 10% instead.

■ 18.8580, 4.6175,
2.9094

■ 18.8580, 4.6175,
2.9094

■ 116.1118, 3.7171,
9.9081

■ 11.9526, 4.2866,
2.2366

■ 35.4900, 4.9188,
4.3015

■ 4.8755, 7.8899,
3.3116

■ 45.0282, 4.9332,
5.0300

0.0000, NaN, NaN

0.0000, NaN, NaN

■ 55.2946, 4.8740,
5.7825

0.0000, NaN, NaN

■ 66.2408, 4.7498,
6.5594

0.0000, NaN, NaN

■ 77.8268, 4.5672,
7.3606

0.0000, NaN, NaN

0.0000, NaN, NaN

■ 90.0193, 4.3316,

102.7893, 4.0470,
9.0353

■ 18.8580, 4.6175,
2.9094

■ 18.8580, 4.6175,
2.9094

■ 17.2926, 6.7701,
3.5185

■ 20.5339, 2.5361,
2.3332

■ 15.8556, 8.9765,
4.1543

■ 22.3033, 0.5333,
1.7895

■ 14.5695, 11.1927,
4.8042

■ 24.1538, -1.3944,
1.2769

■ 13.4592, 13.3419,
5.4443

■ 26.0749, -3.2535,
0.7923

■ 12.5493, 15.3091,
6.0379

■ 28.0582, -5.0520,
0.3325

■ 11.8369, 17.0085,
6.5559

■ 30.0968, -6.7981,
-0.1057

■ 11.1293, 18.8639,
7.1268

■ 32.1850, -8.4992,
-0.5253

■ 11.0863, 18.9830,
7.1636

■ 34.3181, -10.1622,
-0.9288

■ 36.4922, -11.7932,
-1.3187

Harmonies

Analogous

The Analogous color harmony consists of three colors that are next to each other on the color wheel.



18.8584, 4.9885, 0.1996



18.8580, 4.6175, 2.9094



18.8584, 2.6911, 4.8051

Triad

The Triadic color harmony groups three colors that are evenly spaced from another and form a triangle on the color wheel.



18.8584, 4.6168, 2.9097



18.8584, -5.2750, 4.1122



18.8584, -1.8501, -5.1853

Complementary

The Complementary color scheme is a pair of colors which are on the opposite of each other on the color wheel.



18.8580, 4.6175, 2.9094



22.7592, -5.8734, -0.3256

Split Complementary

Split-complementary colors differ from the complementary color scheme. The scheme consists of three colors, the original color and two neighbors of the complement color.



18.8584, -4.4409, -3.7435



18.8580, 4.6175, 2.9094



18.8584, -6.3364, 1.8176

Square

The Square scheme is like the rectangle color scheme, but the four colors are evenly spaced on the color wheel.



18.8584, 4.6168, 2.9097



18.8584, -3.0535, 5.4208



18.8584, -6.0408, -1.0735



18.8584, 1.1302, -4.7720

Rectangle

The Rectangle color scheme consists of four colors that form a rectangle on the color wheel.



18.8580, 4.6175, 2.9094



18.8584, 0.8470, 5.4904



18.8584, -6.0408, -1.0735



18.8584, -2.7925, -4.8943

Sweetspot

The Sweet Spot groups the original color and five complimentary colors.



18.8584, 4.6168, 2.9097



29.4124, 0.6955, 2.3574



19.3913, 7.3433, -4.6438



15.2092, 0.4674, 1.2551



64.8100, -3.4581, 3.5212



16.4960, -0.8802, 0.8963

Same Dimension

The Same Dimension uses a secret algorithm to generate beautiful new colors.



18.8584, 4.6168, 2.9097



23.3869, 8.0865, 4.3999



21.1388, 0.4189, 5.1897



11.5713, 0.1802, 0.8961



15.9250, 27.2695, 10.2903



39.8894, 68.3095, 25.7755

Inverse Universe

The Inverse Universe completely reimagines the original color for something new.



22.7592, -5.8734, -0.3256



29.6841, -8.9376, -0.8529



20.1789, -1.9164, -3.6681



12.1665, -1.4078, 0.4067



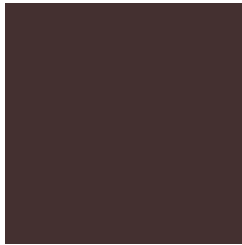
30.6444, -16.2447, -3.2351



76.7600, -40.6906, -8.1041

Previews

White Background



This preview shows how the HunterLab color 18.8580, 4.6175, 2.9094 looks on a white background.

Color Contrast Check

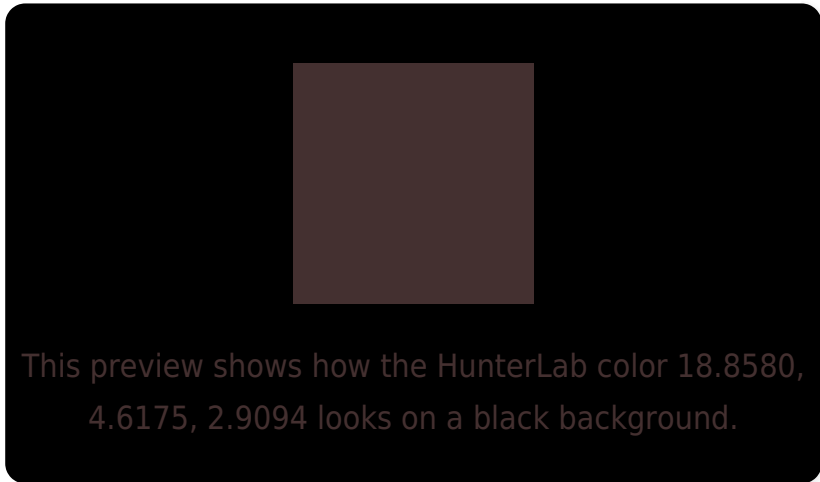
Large Text (above 18pt) WCAG AA ✓ Pass

Any Text WCAG AA ✓ Pass

Large Text (above 18pt) WCAG AAA ✓ Pass

Any Text WCAG AAA ✓ Pass

Black Background



Color Contrast Check

Large Text (above 18pt) WCAG AA × Fail

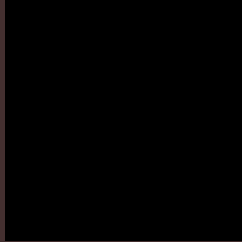
Any Text WCAG AA × Fail

Large Text (above 18pt) WCAG AAA × Fail

Any Text WCAG AAA × Fail

If you want to check with other color combinations, try the [Color Contrast Checker](#).

HunterLab 18.8580, 4.6175, 2.9094 Background



This preview shows how black text looks on a background with the HunterLab color 18.8580, 4.6175, 2.9094.



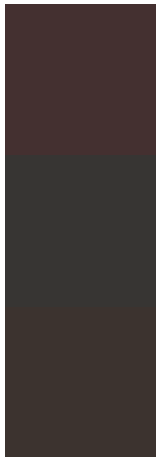
This preview shows how white text looks on a background with the HunterLab color 18.8580, 4.6175,

2.9094.

Color Blindness Simulation

Color vision deficiency is a very complex topic, and I could not describe the different causes any better than Wikipedia does, so if you want to learn more, you should check out their [article about color blindness](#).

Dichromacy



Original Color

18.8580, 4.6175, 2.9094

Protanopia

18.9669, -0.7596, 1.8836

Deuteranopia

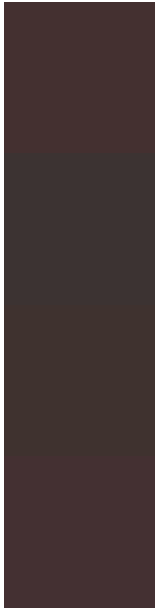
18.7977, 0.9129, 3.1167



Tritanopia

18.9258, 4.9681, 1.9373

Trichromacy



Original Color

18.8580, 4.6175, 2.9094

Protanomaly

18.8643, 1.2699, 2.1620

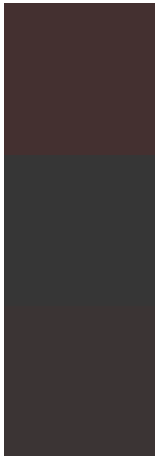
Deuteranomaly

18.8234, 2.1798, 3.1662

Tritanomaly

18.9027, 4.8490, 2.2677

Monochromacy



Original Color

18.8580, 4.6175, 2.9094

Achromatopsia

19.2066, -1.0248, 1.0435

Achromatomaly

19.0623, 0.8332, 1.6558

CSS Examples

Text

The CSS property to change the color of the text to HunterLab 18.8580, 4.6175, 2.9094 is called "color". The color property can be set on classes, ids or directly on the HTML element.

This example shows how text in the color `rgb(68, 48, 48)` looks like.

```
.text, #text, p{  
    color:rgb(68, 48, 48)  
}
```

If you want to add a text shadow in that color use the text-shadow property, you can generate a text shadow directly with our [CSS Text Shadow Generator](#).

Here you see how black text with a 4 pixel rgb(68, 48, 48) colored shadow looks like.

```
.shadow{ text-shadow: 4px 4px 2px rgb(68, 48, 48) }
```

Border

The CSS property to change the border of an element to HunterLab 18.8580, 4.6175, 2.9094 is called "border".

The border property can be set on classes, ids or directly on the HTML element.

This example shows the color as border, it can be applied via the CSS property "border" or "border-color".

```
.border, #border, table{ border:4px solid rgb(68, 48, 48) }
```


If only the border color should be changed use the property `border-color`.

```
.border{ border-color:rgb(68, 48, 48) }
```

If you want to add a box shadow in that color use:

Here you see how a box with a 4 pixel `rgb(68, 48, 48)` colored shadow looks like.

```
.boxshadow{ -moz-box-shadow:4px 4px 4px  
4px rgb(68, 48, 48); -webkit-box-  
shadow:4px 4px 4px 4px rgb(68, 48, 48);  
box-shadow:4px 4px 4px 4px rgb(68, 48, 48)  
}
```

Background

The CSS property to change the background color of an element to HunterLab 18.8580, 4.6175, 2.9094 is called "background". The background property can be set on classes, ids or directly on the HTML element.

```
.background, #background, body{  
background: rgb(68, 48, 48) }
```

If only the background color should be changed can be used:

```
.background{ background-color: rgb(68, 48,  
48) }
```

This example shows the color as background, it is applied via the CSS property "background".

To optimize and compress your CSS code, you can use our [online CSS compressor and optimizer](#) based on csstidy. If you want to create a linear or radial gradient as background or border, check our [CSS Gradient Generator](#).

Hey! You found this booklet interesting? Support Converting Colors with the new Membership Option!

The pro membership hides all ads, plus gives you double the colors in the color bucket, and more awesome pro features!

[Learn more, Memberships starting at \\$2.50/m!](#)

**Follow me
on Twitter!**

@ConvertingColor