

Converting Colors

HunterLab(18.7494, 5.5501,
3.1735)

Have a look what the booklet for
HunterLab(18.7494, 5.5501, 3.1735)
contains.

HunterLab(18.8158, 5.5445, 3.2171)	3
<i>Conversions</i>	4
<i>Details</i>	6
<i>Harmonies</i>	12
<i>Previews</i>	24
<i>Color Blindness Simulation</i>	28
<i>CSS Examples</i>	31

Color

**HunterLab(18.8158, 5.5445,
3.2171)**

Conversions

Conversions Part 1

Format	Color
Hex	462F2F
RGB	70, 47, 47
RGB Percent	27%, 18%, 18%
CMY	0.7255, 0.8157, 0.8157
CMYK	0.00, 0.33, 0.33, 0.73
HSL	0°, 20%, 23%
HSV	0°, 33%, 27%
XYZ	4.0554, 3.5403, 3.1589
YIQ	53.8770, 13.7080, 4.8760

Conversions

Conversions Part 2

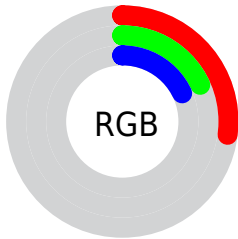
Format	Color
RYB	70, 47, 47
Decimal	4599599
CIELab	22.09, 10.54, 4.22
CIElCh	22, 11.349, 21.816
Yxy	3.5405, 0.3771, 0.3292
Android (android.graphics.Color)	4282789679 (0xFF462F2F)
YUV	53.8770, -3.3904, 14.1399
Hunter-Lab	18.8158, 5.5445, 3.2171

Details

The HunterLab color **18.8158, 5.5445, 3.2171** is a dark color, and the websafe version is hex **333333**. A complement of this color would be **23.2951, -6.5315, -0.5076**, and the grayscale version is **19.1731, -1.0230, 1.0417**.

A 20% lighter version of the original color is **35.4132, 6.0629, 4.5894**, and **4.9687, 8.5090, 3.2106** is the 20% darker color. If you saturate the color by 10%, you get **17.2425, 7.7945, 3.8582**, and if you desaturate by 10%, it is **20.5107, 3.3633, 2.6089**.

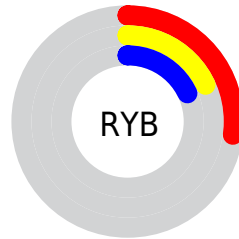
Distribution



Red (27%)

Green (18%)

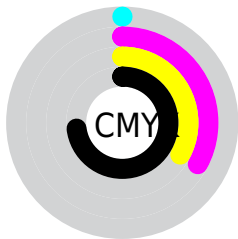
Blue (18%)



Red (27%)

Yellow (18%)

Blue (18%)

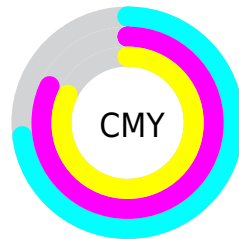


Cyan (0%)

Magenta (33%)

Yellow (33%)

Black (73%)



Cyan (73%)

Magenta (82%)

Yellow (82%)

Brightness & Saturation Gradients

These gradients show how the HunterLab color 18.8158, 5.5445, 3.2171 changes by changing the brightness by 10 percent. The first figure shows a shift by +10% for each color and the second figure -10%.

Similar to the brightness gradients but the following saturation gradients show a change of the HunterLab color 18.8158, 5.5445, 3.2171 by changing the saturation by 10% instead.

■ 18.8158, 5.5445,
3.2171

■ 18.8158, 5.5445,
3.2171

■ 116.0344, 5.2892,
10.5262

■ 11.9164, 5.1139,
2.4884

■ 35.4378, 6.0208,
4.6991

■ 4.8104, 9.2872,
3.3673

■ 44.9718, 6.1136,
5.4659

0.0000, NaN, NaN

0.0000, NaN, NaN

■ 55.2342, 6.1281,
6.2536

0.0000, NaN, NaN

■ 66.1766, 6.0735,
7.0632

0.0000, NaN, NaN

■ 77.7591, 5.9572,
7.8953

0.0000, NaN, NaN

0.0000, NaN, NaN

■ 89.9482, 5.7848,

8.7499

0.0000, NaN, NaN

102.7150, 5.5608,
9.6270

■ 18.8158, 5.5445,
3.2171

■ 18.8158, 5.5445,
3.2171

■ 17.2425, 7.7945,
3.8582

■ 20.5107, 3.3633,
2.6089

■ 15.8107, 10.0872,
4.5234

■ 22.3083, 1.2632,
2.0346

■ 14.5452, 12.3651,
5.1954

■ 24.1945, -0.7572,
1.4935

■ 13.4722, 14.5330,
5.8445

■ 26.1576, -2.7037,
0.9827

■ 12.6162, 16.4574,
6.4275

■ 28.1882, -4.5843,
0.4988

■ 11.9235, 18.1693,
6.9513

■ 30.2785, -6.4076,
0.0384

■ 11.4114, 19.5398,
7.3737

■ 32.4222, -8.1816,
-0.4017

■ 34.6141, -9.9139,
-0.8242

■ 36.8498, -11.6109,
-1.2318

Harmonies

Analogous

The Analogous color harmony consists of three colors that are next to each other on the color wheel.



18.8162, 6.0061, 0.1055



18.8158, 5.5445, 3.2171



18.8162, 3.2648, 5.3322

Triad

The Triadic color harmony groups three colors that are evenly spaced from another and form a triangle on the color wheel.



18.8162, 5.5437, 3.2174



18.8162, -5.9309, 4.5161



18.8162, -1.9381, -6.3360

Complementary

The Complementary color scheme is a pair of colors which are on the opposite of each other on the color wheel.



18.8158, 5.5445, 3.2171



23.2951, -6.5315, -0.5076

Split Complementary

Split-complementary colors differ from the complementary color scheme. The scheme consists of three colors, the original color and two neighbors of the complement color.



18.8162, -4.9250, -4.6285



18.8158, 5.5445, 3.2171



18.8162, -7.1195, 1.8988

Square

The Square scheme is like the rectangle color scheme, but the four colors are evenly spaced on the color wheel.



18.8162, 5.5437, 3.2174



18.8162, -3.4025, 5.9828



18.8162, -6.7649, -1.4696



18.8162, 1.5189, -5.8103

Rectangle

The Rectangle color scheme consists of four colors that form a rectangle on the color wheel.



18.8158, 5.5445, 3.2171



18.8162, 1.1058, 6.0786



18.8162, -6.7649, -1.4696



18.8162, -3.0267, -5.9947

Sweetspot

The Sweet Spot groups the original color and five complimentary colors.



18.8162, 5.5437, 3.2174



30.0205, 1.0053, 2.5051



19.4353, 8.6749, -5.5485



15.0950, 0.5925, 1.2888



64.8100, -3.4581, 3.5212



16.4960, -0.8802, 0.8963

Same Dimension

The Same Dimension uses a secret algorithm to generate beautiful new colors.



18.8162, 5.5437, 3.2174



23.1926, 9.6065, 4.8954



21.4105, 0.6923, 5.7579



12.3075, 0.2117, 0.9598



16.3653, 28.0235, 10.5748



40.4019, 69.1871, 26.1067

Inverse Universe

The Inverse Universe completely reimagines the original color for something new.



23.2951, -6.5315, -0.5076



30.3795, -9.8990, -1.1251



20.3060, -1.9892, -4.4409



12.9552, -1.5162, 0.4273



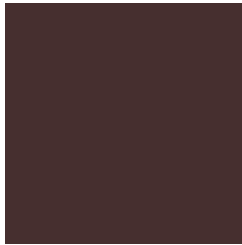
31.4916, -16.6938, -3.3246



77.7461, -41.2132, -8.2084

Previews

White Background



This preview shows how the HunterLab color 18.8158, 5.5445, 3.2171 looks on a white background.

Color Contrast Check

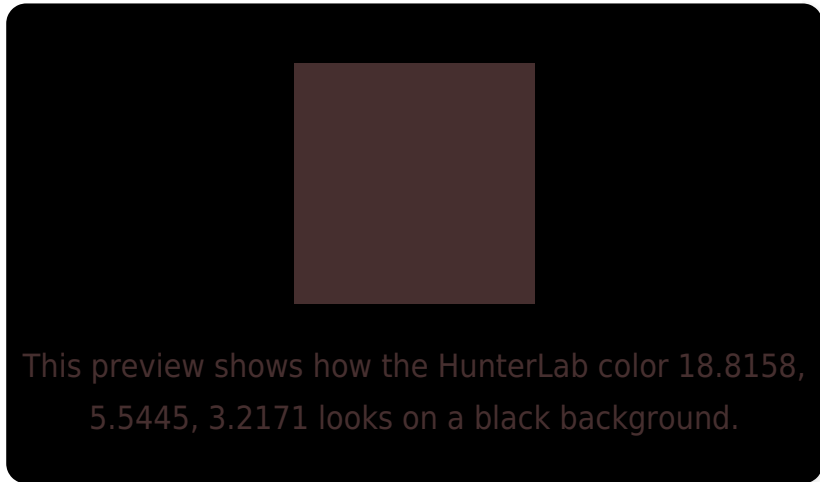
Large Text (above 18pt) WCAG AA ✓ Pass

Any Text WCAG AA ✓ Pass

Large Text (above 18pt) WCAG AAA ✓ Pass

Any Text WCAG AAA ✓ Pass

Black Background



Color Contrast Check

Large Text (above 18pt) WCAG AA × Fail

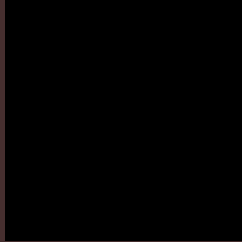
Any Text WCAG AA × Fail

Large Text (above 18pt) WCAG AAA × Fail

Any Text WCAG AAA × Fail

If you want to check with other color combinations, try the [Color Contrast Checker](#).

HunterLab 18.8158, 5.5445, 3.2171 Background



This preview shows how black text looks on a background with the HunterLab color 18.8158, 5.5445, 3.2171.

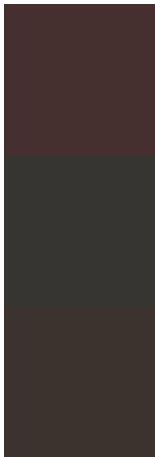


This preview shows how white text looks on a background with the HunterLab color 18.8158, 5.5445,

Color Blindness Simulation

Color vision deficiency is a very complex topic, and I could not describe the different causes any better than Wikipedia does, so if you want to learn more, you should check out their [article about color blindness](#).

Dichromacy



Original Color

18.8158, 5.5445, 3.2171

Protanopia

18.9439, -0.8855, 2.2132

Deuteranopia

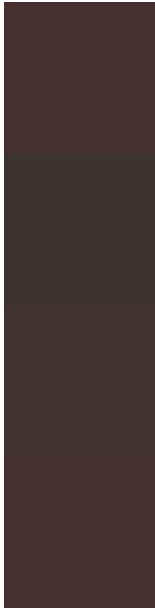
18.8600, 1.0806, 3.5147



Tritanopia

18.8823, 5.8849, 2.2630

Trichromacy



Original Color

18.8158, 5.5445, 3.2171

Protanomaly

18.8416, 1.1485, 2.4866

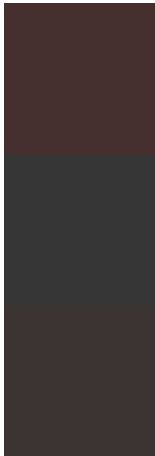
Deuteranomaly

18.8903, 2.3587, 3.5688

Tritanomaly

18.8597, 5.7692, 2.5874

Monochromacy



Original Color

18.8158, 5.5445, 3.2171

Achromatopsia

19.2066, -1.0248, 1.0435

Achromatomaly

18.8874, 1.3937, 1.8310

CSS Examples

Text

The CSS property to change the color of the text to HunterLab 18.8158, 5.5445, 3.2171 is called "color". The color property can be set on classes, ids or directly on the HTML element.

This example shows how text in the color `rgb(70, 47, 47)` looks like.

```
.text, #text, p{  
    color:rgb(70, 47, 47)  
}
```

If you want to add a text shadow in that color use the text-shadow property, you can generate a text shadow directly with our [CSS Text Shadow Generator](#).

Here you see how black text with a 4 pixel rgb(70, 47, 47) colored shadow looks like.

```
.shadow{ text-shadow: 4px 4px 2px rgb(70, 47, 47) }
```

Border

The CSS property to change the border of an element to HunterLab 18.8158, 5.5445, 3.2171 is called "border".

The border property can be set on classes, ids or directly on the HTML element.

This example shows the color as border, it can be applied via the CSS property "border" or "border-color".

```
.border, #border, table{ border:4px solid rgb(70, 47, 47) }
```


If only the border color should be changed use the property `border-color`.

```
.border{ border-color:rgb(70, 47, 47) }
```

If you want to add a box shadow in that color use:

Here you see how a box with a 4 pixel `rgb(70, 47, 47)` colored shadow looks like.

```
.boxshadow{ -moz-box-shadow:4px 4px 4px  
4px rgb(70, 47, 47); -webkit-box-  
shadow:4px 4px 4px 4px rgb(70, 47, 47);  
box-shadow:4px 4px 4px 4px rgb(70, 47, 47)  
}
```

Background

The CSS property to change the background color of an element to HunterLab 18.8158, 5.5445, 3.2171 is called "background". The background property can be set on classes, ids or directly on the HTML element.

```
.background, #background, body{  
background: rgb(70, 47, 47) }
```

If only the background color should be changed can be used:

```
.background{ background-color: rgb(70, 47,  
47) }
```

This example shows the color as background, it is applied via the CSS property "background".

To optimize and compress your CSS code, you can use our [online CSS compressor and optimizer](#) based on csstidy. If you want to create a linear or radial gradient as background or border, check our [CSS Gradient Generator](#).

Hey! You found this booklet interesting? Support Converting Colors with the new Membership Option!

The pro membership hides all ads, plus gives you double the colors in the color bucket, and more awesome pro features!

[Learn more, Memberships starting at \\$2.50/m!](#)

**Follow me
on Twitter!**

@ConvertingColor