

Converting Colors

HunterLab(18.7528, 8.9811,
8.0379)

Have a look what the booklet for
HunterLab(18.7528, 8.9811, 8.0379)
contains.

HunterLab(18.7668, 8.9506, 8.0484)	3
<i>Conversions</i>	4
<i>Details</i>	6
<i>Harmonies</i>	12
<i>Previews</i>	24
<i>Color Blindness Simulation</i>	28
<i>CSS Examples</i>	31

Color

**HunterLab(18.7668, 8.9506,
8.0484)**

Conversions

Conversions Part 1

Format	Color
Hex	502B1D
RGB	80, 43, 29
RGB Percent	31%, 17%, 11%
CMY	0.6863, 0.8314, 0.8863
CMYK	0.00, 0.46, 0.64, 0.69
HSL	16°, 47%, 21%
HSV	16°, 64%, 31%
XYZ	4.3939, 3.5219, 1.6106
YIQ	52.4670, 26.5460, 3.4900

Conversions

Conversions Part 2

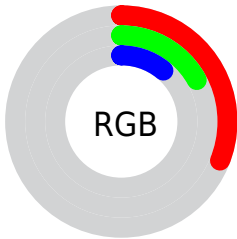
Format	Color
RYB	80, 48, 29
Decimal	5253917
CIELab	22.02, 15.55, 16.46
CIElCh	22, 22.648, 46.628
Yxy	3.5221, 0.4612, 0.3697
Android (android.graphics.Color)	4283443997 (0xFF502B1D)
YUV	52.4670, -11.5692, 24.1464
Hunter-Lab	18.7668, 8.9506, 8.0484

Details

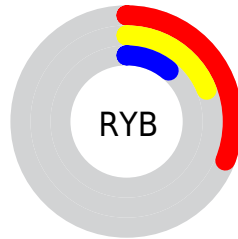
The HunterLab color **18.7668, 8.9506, 8.0484** is a dark color, and the websafe version is hex **663333**. A complement of this color would be **21.7636, -6.0770, -7.3713**, and the grayscale version is **18.7203, -0.9989, 1.0171**.

A 20% lighter version of the original color is **35.3996, 10.1105, 11.4328**, and **5.8316, 9.9869, 3.7683** is the 20% darker color. If you saturate the color by 10%, you get **17.5931, 10.9264, 8.6410**, and if you desaturate by 10%, it is **20.0486, 7.0491, 7.3011**.

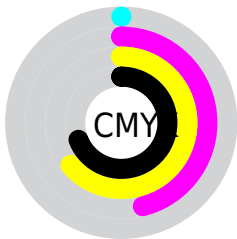
Distribution



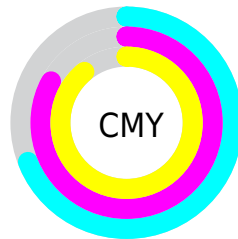
- Red (31%)
- Green (17%)
- Blue (11%)



- Red (31%)
- Yellow (19%)
- Blue (11%)



- Cyan (0%)
- Magenta (46%)
- Yellow (64%)
- Black (69%)



- Cyan (69%)
- Magenta (83%)
- Yellow (89%)

Brightness & Saturation Gradients

These gradients show how the HunterLab color 18.7668, 8.9506, 8.0484 changes by changing the brightness by 10 percent. The first figure shows a shift by +10% for each color and the second figure -10%.

Similar to the brightness gradients but the following saturation gradients show a change of the HunterLab color 18.7668, 8.9506, 8.0484 by changing the saturation by 10% instead.

■ 18.7668, 8.9506,
8.0484

■ 18.7668, 8.9506,
8.0484

■ 115.9446, 10.9130,
21.8409

■ 11.8744, 8.1925,
6.8221

■ 35.3774, 10.0186,
11.4470

■ 4.7337, 14.0641,
3.3136

■ 44.9063, 10.3800,
13.0189

0.0000, NaN, NaN

■ 55.1641, 10.6479,
14.5425

0.0000, NaN, NaN

■ 66.1021, 10.8341,
16.0333

0.0000, NaN, NaN

■ 77.6806, 10.9472,
17.5019

0.0000, NaN, NaN

■ 89.8657, 10.9944,

0.0000, NaN, NaN

18.9560

0.0000, NaN, NaN

102.6288, 10.9815,
20.4009

18.7668, 8.9506,
8.0484

18.7668, 8.9506,
8.0484

17.5931, 10.9264,
8.6410

20.0486, 7.0491,
7.3011

16.5387, 12.9474,
9.0527

21.4251, 5.2426,
6.4236

15.6117, 14.9391,
9.3361

22.8860, 3.5368,
5.4383

15.0928, 16.0989,
9.5819

24.4217, 1.9312,
4.3640

26.0240, 0.4213,
3.2159

■ 27.6858, -0.9998,
2.0063

■ 29.4011, -2.3397,
0.7446

■ 31.1648, -3.6063,
-0.5614

■ 32.9723, -4.8074,
-1.9058

Harmonies

Analogous

The Analogous color harmony consists of three colors that are next to each other on the color wheel.



18.7673, 13.3936, 4.2711



18.7668, 8.9506, 8.0484



18.7673, 2.1489, 9.5917

Triad

The Triadic color harmony groups three colors that are evenly spaced from another and form a triangle on the color wheel.



18.7673, 8.9495, 8.0487



18.7673, -12.1949, 3.6996



18.7673, 2.9260, -15.4315

Complementary

The Complementary color scheme is a pair of colors which are on the opposite of each other on the color wheel.



18.7668, 8.9506, 8.0484



21.7636, -6.0770, -7.3713

Split Complementary

Split-complementary colors differ from the complementary color scheme. The scheme consists of three colors, the original color and two neighbors of the complement color.



18.7673, -3.9585, -15.7599



18.7668, 8.9506, 8.0484



18.7673, -12.0492, -2.9384

Square

The Square scheme is like the rectangle color scheme, but the four colors are evenly spaced on the color wheel.



18.7673, 8.9495, 8.0487



18.7673, -9.6657, 7.7605



18.7673, -9.2339, -10.5896



18.7673, 9.5885, -9.8087

Rectangle

The Rectangle color scheme consists of four colors that form a rectangle on the color wheel.



18.7668, 8.9506, 8.0484



18.7673, -2.5017, 9.7036



18.7673, -9.2339, -10.5896



18.7673, 0.5456, -16.2202

Sweetspot

The Sweet Spot groups the original color and five complimentary colors.



18.7673, 8.9495, 8.0487



33.1102, 1.7265, 5.1599



17.2693, 18.8017, -6.9385



16.6767, 1.0571, 2.7602



67.9972, -3.6282, 3.6944



19.0543, -1.0167, 1.0353

Same Dimension

The Same Dimension uses a secret algorithm to generate beautiful new colors.



18.7673, 8.9495, 8.0487



22.5218, 15.7673, 11.7190



24.3732, -1.6174, 12.1626



14.0540, -0.1572, 1.3703



19.5970, 22.2252, 12.4647



45.6053, 57.6200, 29.1105

Inverse Universe

The Inverse Universe completely reimagines the original color for something new.



21.7636, -6.0770, -7.3713



27.1375, -8.0062, -12.3528



15.5543, 4.2715, -19.2698



14.2932, -1.3131, 0.1581



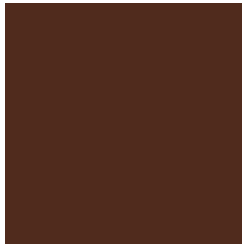
24.8158, -6.7398, -16.4684



58.2749, -14.2613, -42.0526

Previews

White Background



This preview shows how the HunterLab color 18.7668, 8.9506, 8.0484 looks on a white background.

Color Contrast Check

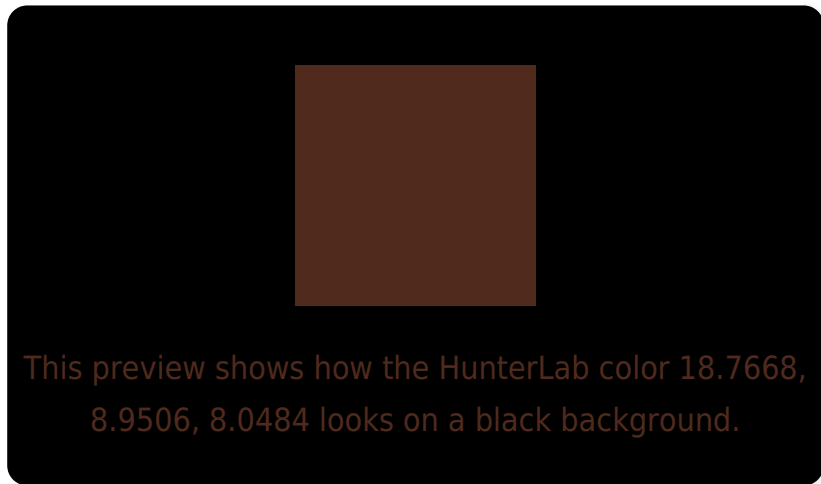
Large Text (above 18pt) WCAG AA ✓ Pass

Any Text WCAG AA ✓ Pass

Large Text (above 18pt) WCAG AAA ✓ Pass

Any Text WCAG AAA ✓ Pass

Black Background



Color Contrast Check

Large Text (above 18pt) WCAG AA × Fail

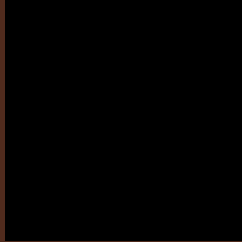
Any Text WCAG AA × Fail

Large Text (above 18pt) WCAG AAA × Fail

Any Text WCAG AAA × Fail

If you want to check with other color combinations, try the [Color Contrast Checker](#).

HunterLab 18.7668, 8.9506, 8.0484 Background



This preview shows how black text looks on a background with the HunterLab color 18.7668, 8.9506, 8.0484.

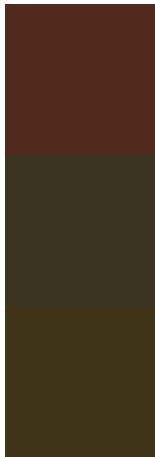


This preview shows how white text looks on a background with the HunterLab color 18.7668, 8.9506,

Color Blindness Simulation

Color vision deficiency is a very complex topic, and I could not describe the different causes any better than Wikipedia does, so if you want to learn more, you should check out their [article about color blindness](#).

Dichromacy



Original Color

18.7668, 8.9506, 8.0484

Protanopia

18.8562, -1.8298, 7.0629

Deuteranopia

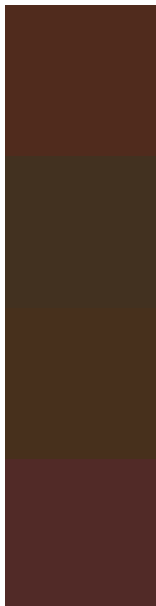
18.9869, 0.8844, 8.4772



Tritanopia

18.7538, 11.3532, 4.2213

Trichromacy



Original Color

18.7668, 8.9506, 8.0484

Protanomaly

18.5988, 2.0582, 7.1404

Deuteranomaly

18.8078, 3.7688, 8.1920

Tritanomaly

18.8461, 10.4699, 5.7575

Monochromacy



Original Color

18.7668, 8.9506, 8.0484

Achromatopsia

18.5310, -0.9888, 1.0068

Achromatomaly

18.4462, 1.9707, 3.7419

CSS Examples

Text

The CSS property to change the color of the text to HunterLab 18.7668, 8.9506, 8.0484 is called "color". The color property can be set on classes, ids or directly on the HTML element.

This example shows how text in the color `rgb(80, 43, 29)` looks like.

```
.text, #text, p{  
    color:rgb(80, 43, 29)  
}
```

If you want to add a text shadow in that color use the text-shadow property, you can generate a text shadow directly with our [CSS Text Shadow Generator](#).

Here you see how black text with a 4 pixel rgb(80, 43, 29) colored shadow looks like.

```
.shadow{ text-shadow: 4px 4px 2px rgb(80, 43, 29) }
```

Border

The CSS property to change the border of an element to HunterLab 18.7668, 8.9506, 8.0484 is called "border".

The border property can be set on classes, ids or directly on the HTML element.

This example shows the color as border, it can be applied via the CSS property "border" or "border-color".

```
.border, #border, table{ border:4px solid rgb(80, 43, 29) }
```


If only the border color should be changed use the property `border-color`.

```
.border{ border-color:rgb(80, 43, 29) }
```

If you want to add a box shadow in that color use:

Here you see how a box with a 4 pixel `rgb(80, 43, 29)` colored shadow looks like.

```
.boxshadow{ -moz-box-shadow:4px 4px 4px  
4px rgb(80, 43, 29); -webkit-box-  
shadow:4px 4px 4px 4px rgb(80, 43, 29);  
box-shadow:4px 4px 4px 4px rgb(80, 43, 29)  
}
```

Background

The CSS property to change the background color of an element to HunterLab 18.7668, 8.9506, 8.0484 is called "background". The background property can be set on classes, ids or directly on the HTML element.

```
.background, #background, body{  
background: rgb(80, 43, 29) }
```

If only the background color should be changed can be used:

```
.background{ background-color: rgb(80, 43,  
29) }
```

This example shows the color as background, it is applied via the CSS property "background".

To optimize and compress your CSS code, you can use our [online CSS compressor and optimizer](#) based on csstidy. If you want to create a linear or radial gradient as background or border, check our [CSS Gradient Generator](#).

Hey! You found this booklet interesting? Support Converting Colors with the new Membership Option!

The pro membership hides all ads, plus gives you double the colors in the color bucket, and more awesome pro features!

[Learn more, Memberships starting at \\$2.50/m!](#)

**Follow me
on Twitter!**

@ConvertingColor