

Converting Colors

HunterLab(18.8344, 1.0061,
5.5472)

Have a look what the booklet for
HunterLab(18.8344, 1.0061, 5.5472)
contains.

HunterLab(18.8968, 0.9357, 5.6381)	3
<i>Conversions</i>	4
<i>Details</i>	6
<i>Harmonies</i>	12
<i>Previews</i>	24
<i>Color Blindness Simulation</i>	28
<i>CSS Examples</i>	31

Color

**HunterLab(18.8968, 0.9357,
5.6381)**

Conversions

Conversions Part 1

Format	Color
Hex	3F3327
RGB	63, 51, 39
RGB Percent	25%, 20%, 15%
CMY	0.7529, 0.8000, 0.8471
CMYK	0.00, 0.19, 0.38, 0.75
HSL	30°, 24%, 20%
HSV	30°, 38%, 25%
XYZ	3.5999, 3.5709, 2.4190
YIQ	53.2200, 11.0040, -1.1880

Conversions

Conversions Part 2

Format	Color
RYB	63, 63, 39
Decimal	4141863
CIELab	22.20, 3.26, 9.64
CIELCh	22, 10.174, 71.292
Yxy	3.5711, 0.3754, 0.3724
Android (android.graphics.Color)	4282331943 (0xFF3F3327)
YUV	53.2200, -7.0105, 8.5771
Hunter-Lab	18.8968, 0.9357, 5.6381

Details

The HunterLab color **18.8968, 0.9357, 5.6381** is a dark color, and the websafe version is hex **333333**. A complement of this color would be **17.7701, -1.7896, -4.7718**, and the grayscale version is **18.9633, -1.0118, 1.0303**.

A 20% lighter version of the original color is **35.4528, 0.5434, 7.8284**, and **4.9698, 2.8979, 3.1131** is the 20% darker color. If you saturate the color by 10%, you get **18.0741, 1.6639, 6.5182**, and if you desaturate by 10%, it is **19.7509, 0.2809, 4.6314**.

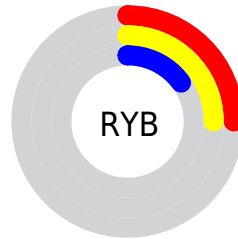
Distribution



 Red (25%)

 Green (20%)

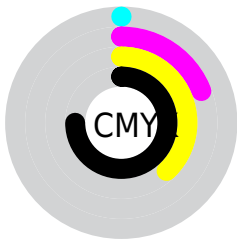
 Blue (15%)



 Red (25%)

 Yellow (25%)

 Blue (15%)

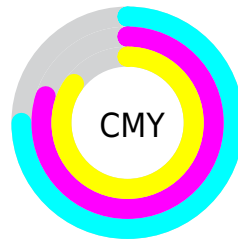


 Cyan (0%)

 Magenta (19%)

 Yellow (38%)

 Black (75%)



 Cyan (75%)

 Magenta (80%)

 Yellow (85%)

Brightness & Saturation Gradients

These gradients show how the HunterLab color 18.8968, 0.9357, 5.6381 changes by changing the brightness by 10 percent. The first figure shows a shift by +10% for each color and the second figure -10%.

Similar to the brightness gradients but the following saturation gradients show a change of the HunterLab color 18.8968, 0.9357, 5.6381 by changing the saturation by 10% instead.

■ 18.8968, 0.9357,
5.6381

■ 18.8968, 0.9357,
5.6381

■ 116.1829, -2.6925,
15.7129

■ 11.9860, 1.0421,
4.4488

■ 35.5378, 0.4856,
7.9299

■ 4.9345, 2.6182,
3.4541

■ 45.0800, 0.1678,
9.0387

0.0000, NaN, NaN

0.0000, NaN, NaN

■ 55.3501, -0.2023,
10.1402

0.0000, NaN, NaN

■ 66.2997, -0.6196,
11.2412

0.0000, NaN, NaN

■ 77.8891, -1.0801,
12.3463

0.0000, NaN, NaN

0.0000, NaN, NaN

■ 90.0846, -1.5807,

13.4586

0.0000, NaN, NaN

102.8575, -2.1189,
14.5802

18.8968, 0.9357,
5.6381

18.8968, 0.9357,
5.6381

18.0741, 1.6639,
6.5182

19.7509, 0.2809,
4.6314

17.2838, 2.4705,
7.2599

20.6330, -0.3021,
3.5081

16.5288, 3.3565,
7.8529

21.5415, -0.8181,
2.2783

15.8117, 4.3218,
8.2873

22.4746, -1.2713,
0.9514

15.1336, 5.3570,
8.5752

23.4306, -1.6662,
-0.4641

■ 14.4846, 6.3947,
8.8962

■ 24.4080, -2.0068,
-1.9607

■ 14.3641, 6.5905,
8.9665

■ 25.4055, -2.2971,
-3.5315

■ 26.4217, -2.5409,
-5.1703

■ 27.4556, -2.7416,
-6.8717

Harmonies

Analogous

The Analogous color harmony consists of three colors that are next to each other on the color wheel.



18.8972, 3.6668, 4.3921



18.8968, 0.9357, 5.6381



18.8972, -2.1591, 5.7754

Triad

The Triadic color harmony groups three colors that are evenly spaced from another and form a triangle on the color wheel.



18.8972, 0.9350, 5.6384



18.8972, -6.4916, -0.1123



18.8972, 3.0748, -3.7315

Complementary

The Complementary color scheme is a pair of colors which are on the opposite of each other on the color wheel.



18.8968, 0.9357, 5.6381



17.7701, -1.7896, -4.7718

Split Complementary

Split-complementary colors differ from the complementary color scheme. The scheme consists of three colors, the original color and two neighbors of the complement color.



18.8972, 0.1686, -5.3980



18.8968, 0.9357, 5.6381



18.8972, -5.2708, -3.0955

Square

The Square scheme is like the rectangle color scheme, but the four colors are evenly spaced on the color wheel.



18.8972, 0.9350, 5.6384



18.8972, -6.3156, 2.7537



18.8972, -2.8781, -5.1482



18.8972, 4.9559, -0.8761

Rectangle

The Rectangle color scheme consists of four colors that form a rectangle on the color wheel.



18.8968, 0.9357, 5.6381



18.8972, -3.9983, 5.2502



18.8972, -2.8781, -5.1482



18.8972, 2.1778, -4.4685

Sweetspot

The Sweet Spot groups the original color and five complimentary colors.



18.8972, 0.9350, 5.6384



27.5237, -0.8437, 3.5073



16.5736, 7.3236, -0.8635



14.0974, -0.4209, 1.8282



62.6995, -3.3455, 3.4066



14.8260, -0.7911, 0.8055

Same Dimension

The Same Dimension uses a secret algorithm to generate beautiful new colors.



18.8972, 0.9350, 5.6384



23.4414, 2.1468, 8.4391



21.8135, -3.8570, 8.1566



11.1757, -0.4177, 1.2026



21.0850, 11.1515, 13.1877



51.8280, 32.4477, 32.5042

Inverse Universe

The Inverse Universe completely reimagines the original color for something new.



17.7701, -1.7896, -4.7718



21.6245, -2.2052, -8.3823



14.9710, 3.1252, -9.3443



11.0428, -0.7428, -0.0211



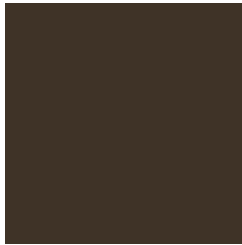
16.9146, 2.6856, -26.9392



40.7620, 11.1661, -75.0533

Previews

White Background



This preview shows how the HunterLab color 18.8968, 0.9357, 5.6381 looks on a white background.

Color Contrast Check

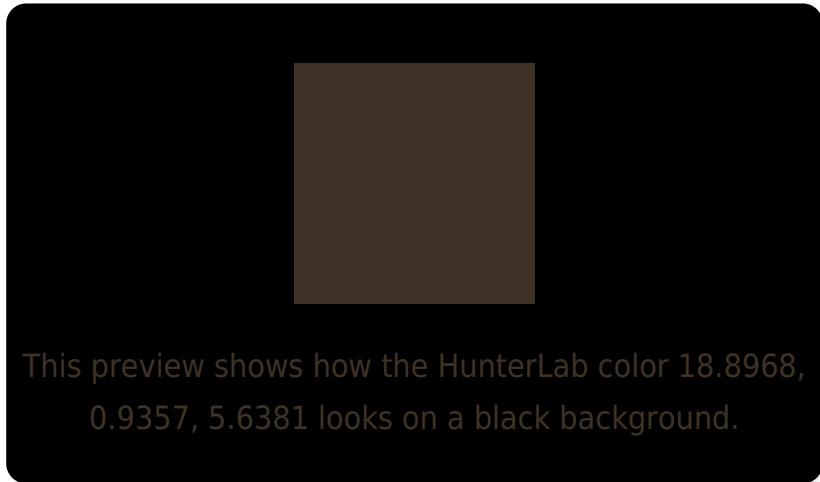
Large Text (above 18pt) WCAG AA ✓ Pass

Any Text WCAG AA ✓ Pass

Large Text (above 18pt) WCAG AAA ✓ Pass

Any Text WCAG AAA ✓ Pass

Black Background



Color Contrast Check

Large Text (above 18pt) WCAG AA × Fail

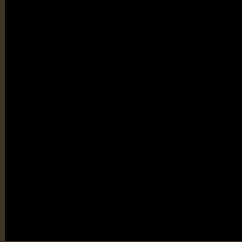
Any Text WCAG AA × Fail

Large Text (above 18pt) WCAG AAA × Fail

Any Text WCAG AAA × Fail

If you want to check with other color combinations, try the [Color Contrast Checker](#).

HunterLab 18.8968, 0.9357, 5.6381 Background



This preview shows how black text looks on a background with the HunterLab color 18.8968, 0.9357, 5.6381.

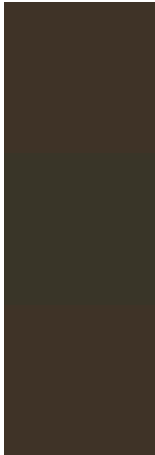


This preview shows how white text looks on a background with the HunterLab color 18.8968, 0.9357,

Color Blindness Simulation

Color vision deficiency is a very complex topic, and I could not describe the different causes any better than Wikipedia does, so if you want to learn more, you should check out their [article about color blindness](#).

Dichromacy



Original Color

18.8968, 0.9357, 5.6381

Protanopia

18.8925, -1.4723, 5.3156

Deuteranopia

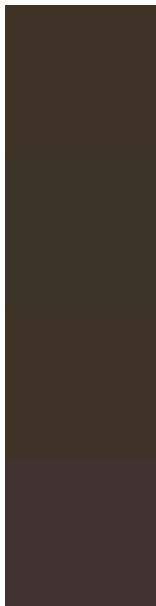
18.8968, 0.9357, 5.6381



Tritanopia

18.8246, 3.6137, 1.0545

Trichromacy



Original Color

18.8968, 0.9357, 5.6381

Protanomaly

18.8122, -0.5216, 5.2559

Deuteranomaly

18.8968, 0.9357, 5.6381

Tritanomaly

18.9330, 2.5847, 2.9549

Monochromacy



Original Color

18.8968, 0.9357, 5.6381

Achromatopsia

18.8683, -1.0068, 1.0252

Achromatomaly

18.8129, -0.1993, 2.7762

CSS Examples

Text

The CSS property to change the color of the text to HunterLab 18.8968, 0.9357, 5.6381 is called "color". The color property can be set on classes, ids or directly on the HTML element.

This example shows how text in the color `rgb(63, 51, 39)` looks like.

```
.text, #text, p{  
    color:rgb(63, 51, 39)  
}
```

If you want to add a text shadow in that color use the text-shadow property, you can generate a text shadow directly with our [CSS Text Shadow Generator](#).

Here you see how black text with a 4 pixel rgb(63, 51, 39) colored shadow looks like.

```
.shadow{ text-shadow: 4px 4px 2px rgb(63, 51, 39) }
```

Border

The CSS property to change the border of an element to HunterLab 18.8968, 0.9357, 5.6381 is called "border". The border property can be set on classes, ids or directly on the HTML element.

This example shows the color as border, it can be applied via the CSS property "border" or "border-color".

```
.border, #border, table{ border:4px solid rgb(63, 51, 39) }
```


If only the border color should be changed use the property `border-color`.

```
.border{ border-color:rgb(63, 51, 39) }
```

If you want to add a box shadow in that color use:

Here you see how a box with a 4 pixel `rgb(63, 51, 39)` colored shadow looks like.

```
.boxshadow{ -moz-box-shadow:4px 4px 4px  
4px rgb(63, 51, 39); -webkit-box-  
shadow:4px 4px 4px 4px rgb(63, 51, 39);  
box-shadow:4px 4px 4px 4px rgb(63, 51, 39)  
}
```

Background

The CSS property to change the background color of an element to HunterLab 18.8968, 0.9357, 5.6381 is called "background". The background property can be set on classes, ids or directly on the HTML element.

```
.background, #background, body{  
background: rgb(63, 51, 39) }
```

If only the background color should be changed can be used:

```
.background{ background-color: rgb(63, 51,  
39) }
```

This example shows the color as background, it is applied via the CSS property "background".

To optimize and compress your CSS code, you can use our [online CSS compressor and optimizer](#) based on csstidy. If you want to create a linear or radial gradient as background or border, check our [CSS Gradient Generator](#).

Hey! You found this booklet
interesting? Support Converting
Colors with the new Membership
Option!

The pro membership hides all ads, plus gives you
double the colors in the color bucket, and more
awesome pro features!

[Learn more, Memberships starting at \\$2.50/m!](#)

**Follow me
on Twitter!**

@ConvertingColor