

Converting Colors

HunterLab(18.9210, 5.5378,
1.6329)

Have a look what the booklet for
HunterLab(18.9210, 5.5378, 1.6329)
contains.

HunterLab(19.0448, 5.3902, 1.7155)	3
<i>Conversions</i>	4
<i>Details</i>	6
<i>Harmonies</i>	12
<i>Previews</i>	24
<i>Color Blindness Simulation</i>	28
<i>CSS Examples</i>	31

Color

**HunterLab(19.0448, 5.3902,
1.7155)**

Conversions

Conversions Part 1

Format	Color
Hex	453034
RGB	69, 48, 52
RGB Percent	27%, 19%, 20%
CMY	0.7294, 0.8118, 0.7961
CMYK	0.00, 0.30, 0.25, 0.73
HSL	349°, 18%, 23%
HSV	349°, 30%, 27%
XYZ	4.1310, 3.6270, 3.7312
YIQ	54.7350, 11.2320, 5.6960

Conversions

Conversions Part 2

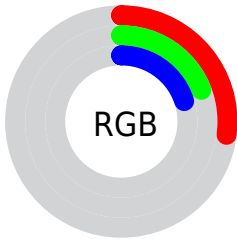
Format	Color
R_{YB}	69, 48, 52
Decimal	4534324
CIE _{Lab}	22.40, 10.29, 1.24
CIE _{LCh}	22, 10.361, 6.886
Yxy	3.6272, 0.3596, 0.3157
Android (android.graphics.Color)	4282724404 (0xFF453034)
YUV	54.7350, -1.3484, 12.5104
Hunter-Lab	19.0448, 5.3902, 1.7155

Details

The HunterLab color **19.0448, 5.3902, 1.7155** is a dark color, and the websafe version is hex **333333**. A complement of this color would be **22.9485, -6.7031, 1.1021**, and the grayscale version is **19.4580, -1.0382, 1.0572**.

A 20% lighter version of the original color is **35.6915, 5.9489, 2.9016**, and **5.1756, 8.0395, 1.3562** is the 20% darker color. If you saturate the color by 10%, you get **17.4891, 7.6890, 2.0028**, and if you desaturate by 10%, it is **20.7113, 3.1333, 1.5150**.

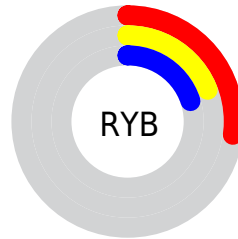
Distribution



Red (27%)

Green (19%)

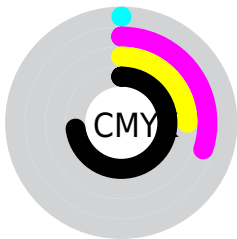
Blue (20%)



Red (27%)

Yellow (19%)

Blue (20%)

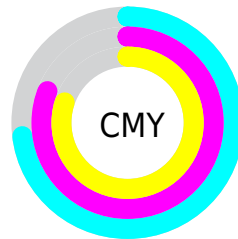


Cyan (0%)

Magenta (30%)

Yellow (25%)

Black (73%)



Cyan (73%)

Magenta (81%)

Yellow (80%)

Brightness & Saturation Gradients

These gradients show how the HunterLab color 19.0448, 5.3902, 1.7155 changes by changing the brightness by 10 percent. The first figure shows a shift by +10% for each color and the second figure -10%.

Similar to the brightness gradients but the following saturation gradients show a change of the HunterLab color 19.0448, 5.3902, 1.7155 by changing the saturation by 10% instead.

■ 19.0448, 5.3902,
1.7155

■ 19.0448, 5.3902,
1.7155

■ 116.4538, 5.0026,
7.5973

■ 12.1132, 4.9816,
1.2395

■ 35.7204, 5.8295,
2.7874

■ 5.1531, 8.4231,
1.2797

■ 45.2777, 5.9061,
3.3786

0.0000, NaN, NaN

0.0000, NaN, NaN

■ 55.5617, 5.9054,
4.0042

0.0000, NaN, NaN

■ 66.5244, 5.8367,
4.6626

0.0000, NaN, NaN

■ 78.1262, 5.7070,
5.3524

0.0000, NaN, NaN

0.0000, NaN, NaN

■ 90.3335, 5.5219,

103.1176, 5.2859,
6.8208

■ 19.0448, 5.3902,
1.7155

■ 19.0448, 5.3902,
1.7155

■ 17.4891, 7.6890,
2.0028

■ 20.7113, 3.1333,
1.5150

■ 16.0616, 10.0038,
2.3861

■ 22.4717, 0.9326,
1.3889

■ 14.7844, 12.2811,
2.8724

■ 24.3137, -1.2103,
1.3268

■ 13.6814, 14.4353,
3.4594

■ 26.2269, -3.2981,
1.3193

■ 12.7761, 16.3462,
4.1308

■ 28.2028, -5.3357,
1.3581

■ 12.0574, 17.9693,
4.8271

■ 30.2344, -7.3294,
1.4365

■ 11.3782, 19.7440,
5.3481

■ 32.3161, -9.2851,
1.5487

■ 34.4430, -11.2086,
1.6903

■ 36.6113, -13.1050,
1.8572

Harmonies

Analogous

The Analogous color harmony consists of three colors that are next to each other on the color wheel.



19.0452, 4.8914, -1.3715



19.0448, 5.3902, 1.7155



19.0452, 4.0835, 4.1862

Triad

The Triadic color harmony groups three colors that are evenly spaced from another and form a triangle on the color wheel.



19.0452, 5.3895, 1.7158



19.0452, -4.5244, 5.1000



19.0452, -3.3414, -5.0734

Complementary

The Complementary color scheme is a pair of colors which are on the opposite of each other on the color wheel.



19.0448, 5.3902, 1.7155



22.9485, -6.7031, 1.1021

Split Complementary

Split-complementary colors differ from the complementary color scheme. The scheme consists of three colors, the original color and two neighbors of the complement color.



19.0452, -5.6319, -2.7638



19.0448, 5.3902, 1.7155



19.0452, -6.2832, 3.1664

Square

The Square scheme is like the rectangle color scheme, but the four colors are evenly spaced on the color wheel.



19.0452, 5.3895, 1.7158



19.0452, -1.7393, 5.9233



19.0452, -6.6751, 0.3316



19.0452, -0.2842, -5.6308

Rectangle

The Rectangle color scheme consists of four colors that form a rectangle on the color wheel.



19.0448, 5.3902, 1.7155



19.0452, 2.4126, 5.2656



19.0452, -6.6751, 0.3316



19.0452, -4.2203, -4.4598

Sweetspot

The Sweet Spot groups the original color and five complimentary colors.



19.0452, 5.3895, 1.7158



29.4518, 0.9093, 1.7923



19.1331, 6.6148, -5.5416



15.2313, 0.5874, 0.9374



64.8100, -3.4581, 3.5212



16.4960, -0.8802, 0.8963

Same Dimension

The Same Dimension uses a secret algorithm to generate beautiful new colors.



19.0452, 5.3895, 1.7158



23.1088, 9.4031, 2.5199



20.3595, 2.2550, 4.4411



12.3226, 0.2941, 0.7424



16.5072, 28.5526, 8.4687



40.6187, 69.9941, 22.8878

Inverse Universe

The Inverse Universe completely reimagines the original color for something new.



19.0452, 5.3895, 1.7158



23.1088, 9.4031, 2.5199



21.4010, -3.6371, -2.4746



12.3226, 0.2941, 0.7424



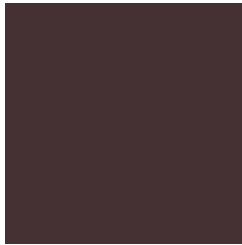
16.5072, 28.5526, 8.4687



40.6187, 69.9941, 22.8878

Previews

White Background



This preview shows how the HunterLab color 19.0448, 5.3902, 1.7155 looks on a white background.

Color Contrast Check

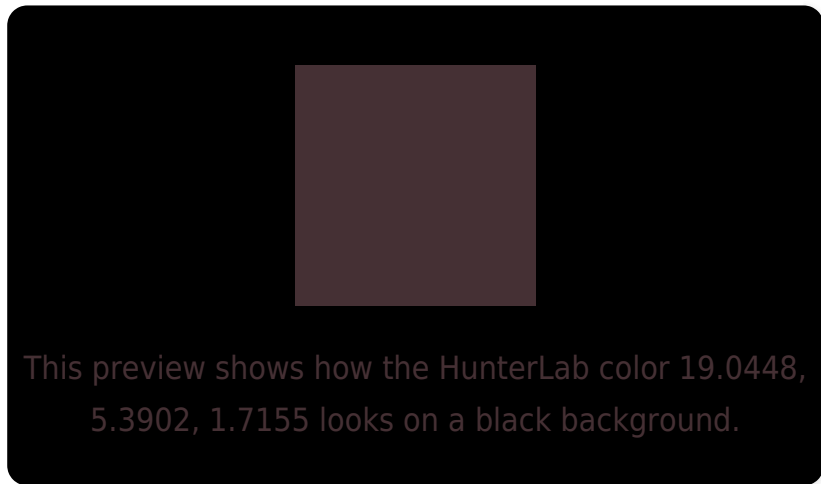
Large Text (above 18pt) WCAG AA ✓ Pass

Any Text WCAG AA ✓ Pass

Large Text (above 18pt) WCAG AAA ✓ Pass

Any Text WCAG AAA ✓ Pass

Black Background



Color Contrast Check

Large Text (above 18pt) WCAG AA × Fail

Any Text WCAG AA × Fail

Large Text (above 18pt) WCAG AAA × Fail

Any Text WCAG AAA × Fail

If you want to check with other color combinations, try the [Color Contrast Checker](#).

HunterLab 19.0448, 5.3902, 1.7155 Background



This preview shows how black text looks on a background with the HunterLab color 19.0448, 5.3902, 1.7155.

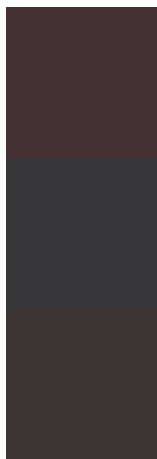


This preview shows how white text looks on a background with the HunterLab color 19.0448, 5.3902,

Color Blindness Simulation

Color vision deficiency is a very complex topic, and I could not describe the different causes any better than Wikipedia does, so if you want to learn more, you should check out their [article about color blindness](#).

Dichromacy



Original Color

19.0448, 5.3902, 1.7155

Protanopia

18.9903, -0.4849, 0.4086

Deuteranopia

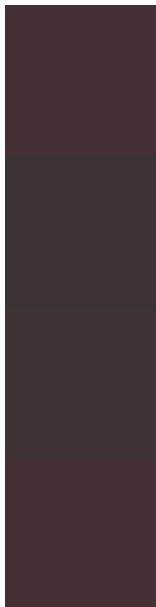
19.1198, 0.9806, 2.0865



Tritanopia

19.0448, 5.3902, 1.7155

Trichromacy



Original Color

19.0448, 5.3902, 1.7155

Protanomaly

18.8780, 1.5071, 0.6979

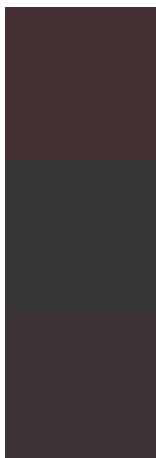
Deuteranomaly

19.1401, 2.2351, 2.1313

Tritanomaly

19.0448, 5.3902, 1.7155

Monochromacy



Original Color

19.0448, 5.3902, 1.7155

Achromatopsia

19.5459, -1.0429, 1.0620

Achromatomaly

19.1911, 1.3632, 1.0671

CSS Examples

Text

The CSS property to change the color of the text to HunterLab 19.0448, 5.3902, 1.7155 is called "color". The color property can be set on classes, ids or directly on the HTML element.

This example shows how text in the color `rgb(69, 48, 52)` looks like.

```
.text, #text, p{  
    color:rgb(69, 48, 52)  
}
```

If you want to add a text shadow in that color use the text-shadow property, you can generate a text shadow directly with our [CSS Text Shadow Generator](#).

Here you see how black text with a 4 pixel rgb(69, 48, 52) colored shadow looks like.

```
.shadow{ text-shadow: 4px 4px 2px rgb(69, 48, 52) }
```

Border

The CSS property to change the border of an element to HunterLab 19.0448, 5.3902, 1.7155 is called "border". The border property can be set on classes, ids or directly on the HTML element.

This example shows the color as border, it can be applied via the CSS property "border" or "border-color".

```
.border, #border, table{ border:4px solid rgb(69, 48, 52) }
```


If only the border color should be changed use the property border-color.

```
.border{ border-color:rgb(69, 48, 52) }
```

If you want to add a box shadow in that color use:

Here you see how a box with a 4 pixel rgb(69, 48, 52) colored shadow looks like.

```
.boxshadow{ -moz-box-shadow:4px 4px 4px  
4px rgb(69, 48, 52); -webkit-box-  
shadow:4px 4px 4px 4px rgb(69, 48, 52);  
box-shadow:4px 4px 4px 4px rgb(69, 48, 52)  
}
```

Background

The CSS property to change the background color of an element to HunterLab 19.0448, 5.3902, 1.7155 is called "background". The background property can be set on classes, ids or directly on the HTML element.

```
.background, #background, body{  
background: rgb(69, 48, 52) }
```

If only the background color should be changed can be used:

```
.background{ background-color: rgb(69, 48,  
52) }
```

This example shows the color as background, it is applied via the CSS property "background".

To optimize and compress your CSS code, you can use our [online CSS compressor and optimizer](#) based on csstidy. If you want to create a linear or radial gradient as background or border, check our [CSS Gradient Generator](#).

Hey! You found this booklet interesting? Support Converting Colors with the new Membership Option!

The pro membership hides all ads, plus gives you double the colors in the color bucket, and more awesome pro features!

[Learn more, Memberships starting at \\$2.50/m!](#)

**Follow me
on Twitter!**

@ConvertingColor