

Converting Colors

HunterLab(18.9470, 1.8152,
6.4491)

Have a look what the booklet for
HunterLab(18.9470, 1.8152, 6.4491)
contains.

HunterLab(18.8861, 1.9745, 6.4323)	3
<i>Conversions</i>	4
<i>Details</i>	6
<i>Harmonies</i>	12
<i>Previews</i>	24
<i>Color Blindness Simulation</i>	28
<i>CSS Examples</i>	31

Color

**HunterLab(18.8861, 1.9745,
6.4323)**

Conversions

Conversions Part 1

Format	Color
Hex	423224
RGB	66, 50, 36
RGB Percent	26%, 20%, 14%
CMY	0.7412, 0.8039, 0.8588
CMYK	0.00, 0.24, 0.45, 0.74
HSL	28°, 29%, 20%
HSV	28°, 45%, 26%
XYZ	3.7058, 3.5668, 2.1622
YIQ	53.1880, 14.0300, -0.9620

Conversions

Conversions Part 2

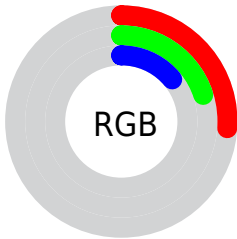
Format	Color
R_{YB}	66, 62, 36
Decimal	4338212
CIE Lab	22.19, 4.96, 11.68
CIE LCh	22, 12.684, 67.001
Yxy	3.5670, 0.3928, 0.3781
Android (android.graphics.Color)	4282528292 (0xFF423224)
YUV	53.1880, -8.4737, 11.2361
Hunter-Lab	18.8861, 1.9745, 6.4323

Details

The HunterLab color **18.8861, 1.9745, 6.4323** is a dark color, and the websafe version is hex **333333**. A complement of this color would be **17.9563, -2.2087, -5.9930**, and the grayscale version is **18.9566, -1.0115, 1.0299**.

A 20% lighter version of the original color is **35.5030, 1.9145, 8.9101**, and **4.9625, 4.0014, 3.1279** is the 20% darker color. If you saturate the color by 10%, you get **18.0024, 2.8970, 7.2293**, and if you desaturate by 10%, it is **19.8086, 1.1326, 5.4993**.

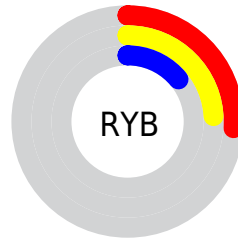
Distribution



Red (26%)

Green (20%)

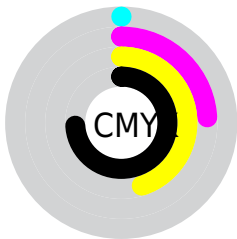
Blue (14%)



Red (26%)

Yellow (24%)

Blue (14%)

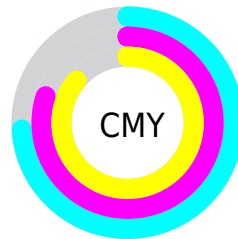


Cyan (0%)

Magenta (24%)

Yellow (45%)

Black (74%)



Cyan (74%)

Magenta (80%)

Yellow (86%)

Brightness & Saturation Gradients

These gradients show how the HunterLab color 18.8861, 1.9745, 6.4323 changes by changing the brightness by 10 percent. The first figure shows a shift by +10% for each color and the second figure -10%.

Similar to the brightness gradients but the following saturation gradients show a change of the HunterLab color 18.8861, 1.9745, 6.4323 by changing the saturation by 10% instead.

■ 18.8861, 1.9745,
6.4323

■ 18.8861, 1.9745,
6.4323

■ 116.1633, -0.8535,
17.5916

■ 11.9768, 1.9499,
5.1537

■ 35.5247, 1.7466,
9.0454

■ 4.9183, 4.1281,
3.4428

■ 45.0657, 1.5264,
10.2890

0.0000, NaN, NaN

0.0000, NaN, NaN

■ 55.3348, 1.2475,
11.5135

0.0000, NaN, NaN

■ 66.2835, 0.9160,
12.7284

0.0000, NaN, NaN

■ 77.8719, 0.5367,
13.9398

0.0000, NaN, NaN

0.0000, NaN, NaN

■ 90.0666, 0.1134,

15.1522

0.0000, NaN, NaN

102.8387, -0.3509,
16.3687

18.8861, 1.9745,
6.4323

18.8861, 1.9745,
6.4323

18.0024, 2.8970,
7.2293

19.8086, 1.1326,
5.4993

17.1592, 3.9043,
7.8769

20.7655, 0.3702,
4.4420

16.3603, 4.9955,
8.3634

21.7546, -0.3177,
3.2723

15.6091, 6.1671,
8.6790

22.7736, -0.9359,
2.0009

14.8988, 7.3616,
8.9666

23.8201, -1.4892,
0.6375

■ 14.5877, 7.8969,
9.1271

■ 24.8923, -1.9824,
-0.8093

■ 25.9882, -2.4202,
-2.3317

■ 27.1064, -2.8068,
-3.9231

■ 28.2454, -3.1464,
-5.5773

Harmonies

Analogous

The Analogous color harmony consists of three colors that are next to each other on the color wheel.



18.8865, 5.2791, 4.7964



18.8861, 1.9745, 6.4323



18.8865, -1.9032, 6.7703

Triad

The Triadic color harmony groups three colors that are evenly spaced from another and form a triangle on the color wheel.



18.8865, 1.9737, 6.4325



18.8865, -7.8135, 0.1488



18.8865, 3.6596, -5.5103

Complementary

The Complementary color scheme is a pair of colors which are on the opposite of each other on the color wheel.



18.8861, 1.9745, 6.4323



17.9563, -2.2087, -5.9930

Split Complementary

Split-complementary colors differ from the complementary color scheme. The scheme consists of three colors, the original color and two neighbors of the complement color.



18.8865, -0.0973, -7.3893



18.8861, 1.9745, 6.4323



18.8865, -6.5684, -3.7239

Square

The Square scheme is like the rectangle color scheme, but the four colors are evenly spaced on the color wheel.



18.8865, 1.9737, 6.4325



18.8865, -7.3557, 3.5794



18.8865, -3.8169, -6.6773



18.8865, 6.3057, -1.9378

Rectangle

The Rectangle color scheme consists of four colors that form a rectangle on the color wheel.



18.8861, 1.9745, 6.4323



18.8865, -4.2557, 6.2908



18.8865, -3.8169, -6.6773



18.8865, 2.4736, -6.3904

Sweetspot

The Sweet Spot groups the original color and five complimentary colors.



18.8865, 1.9737, 6.4325



28.7828, -0.4908, 4.1765



16.3340, 9.6369, -1.5593



14.5850, -0.2079, 2.2049



63.7533, -3.4017, 3.4638



15.6573, -0.8354, 0.8507

Same Dimension

The Same Dimension uses a secret algorithm to generate beautiful new colors.



18.8865, 1.9737, 6.4325



23.5051, 4.0679, 9.7099



22.5083, -4.0554, 9.4018



11.9112, -0.3996, 1.2734



21.0474, 12.9169, 13.1954



50.9511, 36.5677, 32.0360

Inverse Universe

The Inverse Universe completely reimagines the original color for something new.



17.9563, -2.2087, -5.9930



21.9817, -2.7067, -10.6500



14.4624, 3.9736, -12.1492



11.8150, -0.8379, -0.0101



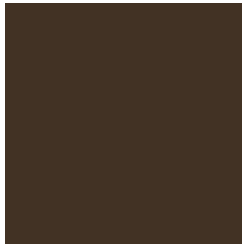
18.1334, 1.4054, -25.6991



43.3088, 7.4049, -70.1172

Previews

White Background



This preview shows how the HunterLab color 18.8861, 1.9745, 6.4323 looks on a white background.

Color Contrast Check

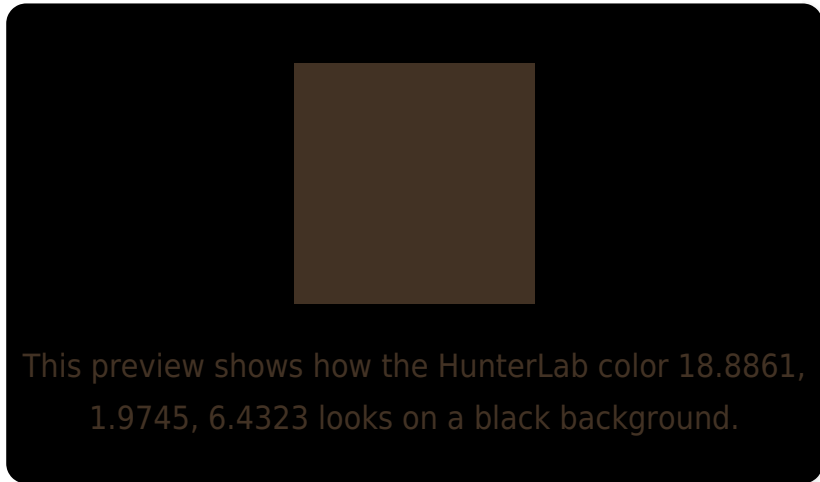
Large Text (above 18pt) WCAG AA ✓ Pass

Any Text WCAG AA ✓ Pass

Large Text (above 18pt) WCAG AAA ✓ Pass

Any Text WCAG AAA ✓ Pass

Black Background



Color Contrast Check

Large Text (above 18pt) WCAG AA × Fail

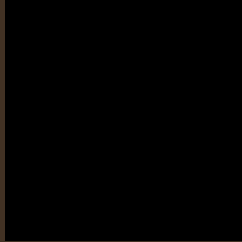
Any Text WCAG AA × Fail

Large Text (above 18pt) WCAG AAA × Fail

Any Text WCAG AAA × Fail

If you want to check with other color combinations, try the [Color Contrast Checker](#).

HunterLab 18.8861, 1.9745, 6.4323 Background



This preview shows how black text looks on a background with the HunterLab color 18.8861, 1.9745, 6.4323.

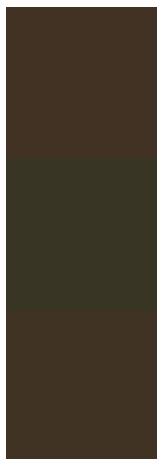


This preview shows how white text looks on a background with the HunterLab color 18.8861, 1.9745,

Color Blindness Simulation

Color vision deficiency is a very complex topic, and I could not describe the different causes any better than Wikipedia does, so if you want to learn more, you should check out their [article about color blindness](#).

Dichromacy



Original Color

18.8861, 1.9745, 6.4323

Protanopia

18.8405, -1.7590, 6.0706

Deuteranopia

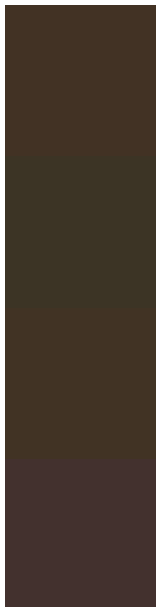
18.9341, 0.9606, 6.4575



Tritanopia

18.8551, 4.7913, 1.4863

Trichromacy



Original Color

18.8861, 1.9745, 6.4323

Protanomaly

18.8420, -0.5230, 6.0937

Deuteranomaly

19.0233, 1.2606, 6.5421

Tritanomaly

18.9398, 3.6695, 3.6434

Monochromacy



Original Color

18.8861, 1.9745, 6.4323

Achromatopsia

18.8683, -1.0068, 1.0252

Achromatomaly

18.8700, -0.0467, 3.1768

CSS Examples

Text

The CSS property to change the color of the text to HunterLab 18.8861, 1.9745, 6.4323 is called "color". The color property can be set on classes, ids or directly on the HTML element.

This example shows how text in the color `rgb(66, 50, 36)` looks like.

```
.text, #text, p{  
    color:rgb(66, 50, 36)  
}
```

If you want to add a text shadow in that color use the text-shadow property, you can generate a text shadow directly with our [CSS Text Shadow Generator](#).

Here you see how black text with a 4 pixel rgb(66, 50, 36) colored shadow looks like.

```
.shadow{ text-shadow: 4px 4px 2px rgb(66, 50, 36) }
```

Border

The CSS property to change the border of an element to HunterLab 18.8861, 1.9745, 6.4323 is called "border". The border property can be set on classes, ids or directly on the HTML element.

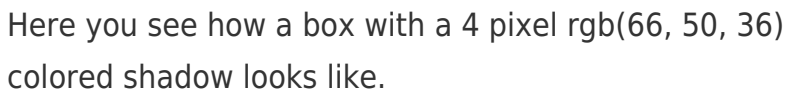
This example shows the color as border, it can be applied via the CSS property "border" or "border-color".

```
.border, #border, table{ border:4px solid rgb(66, 50, 36) }
```


If only the border color should be changed use the property `border-color`.

```
.border{ border-color:rgb(66, 50, 36) }
```

If you want to add a box shadow in that color use:



Here you see how a box with a 4 pixel `rgb(66, 50, 36)` colored shadow looks like.

```
.boxshadow{ -moz-box-shadow:4px 4px 4px  
4px rgb(66, 50, 36); -webkit-box-  
shadow:4px 4px 4px 4px rgb(66, 50, 36);  
box-shadow:4px 4px 4px 4px rgb(66, 50, 36)  
}
```

Background

The CSS property to change the background color of an element to HunterLab 18.8861, 1.9745, 6.4323 is called "background". The background property can be set on classes, ids or directly on the HTML element.

```
.background, #background, body{  
background: rgb(66, 50, 36) }
```

If only the background color should be changed can be used:

```
.background{ background-color: rgb(66, 50,  
36) }
```

This example shows the color as background, it is applied via the CSS property "background".

To optimize and compress your CSS code, you can use our [online CSS compressor and optimizer](#) based on csstidy. If you want to create a linear or radial gradient as background or border, check our [CSS Gradient Generator](#).

Hey! You found this booklet interesting? Support Converting Colors with the new Membership Option!

The pro membership hides all ads, plus gives you double the colors in the color bucket, and more awesome pro features!

[Learn more, Memberships starting at \\$2.50/m!](#)

**Follow me
on Twitter!**

@ConvertingColor