

Converting Colors

HunterLab(19.0122, 8.0313,
5.3138)

Have a look what the booklet for
HunterLab(19.0122, 8.0313, 5.3138)
contains.

| | |
|---|----|
| HunterLab(19.0122, 8.0313, 5.3138) | 3 |
| <i>Conversions</i> | 4 |
| <i>Details</i> | 6 |
| <i>Harmonies</i> | 12 |
| <i>Previews</i> | 24 |
| <i>Color Blindness Simulation</i> | 28 |
| <i>CSS Examples</i> | 31 |

Color

**HunterLab(19.0122, 8.0313,
5.3138)**

Conversions

Conversions Part 1

| Format | Color |
|-------------|--------------------------|
| Hex | 4D2D29 |
| RGB | 77, 45, 41 |
| RGB Percent | 30%, 18%, 16% |
| CMY | 0.6980, 0.8235, 0.8392 |
| CMYK | 0.00, 0.42, 0.47, 0.70 |
| HSL | 7°, 31%, 23% |
| HSV | 7°, 47%, 30% |
| XYZ | 4.3992, 3.6146, 2.5636 |
| YIQ | 54.1120, 20.3560, 5.5400 |

Conversions

Conversions Part 2

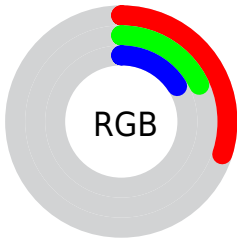
| Format | Color |
|-------------------------------------|------------------------------|
| R_{YB} | 77, 46, 41 |
| Decimal | 5057833 |
| CIE _{Lab} | 22.35, 14.20, 8.81 |
| CIE _{LCh} | 22, 16.708, 31.805 |
| Yxy | 3.6148, 0.4159, 0.3417 |
| Android (android.graphics.Color) | 4283247913 (0xFF4D2D29) |
| YUV | 54.1120, -6.4642, 20.0728 |
| Hunter-Lab | 19.0122, 8.0313, 5.3138 |

Details

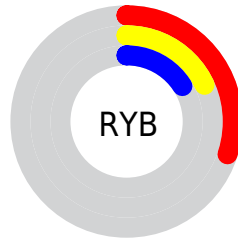
The HunterLab color **19.0122, 8.0313, 5.3138** is a dark color, and the websafe version is hex **663333**. A complement of this color would be **24.0251, -7.5966, -2.6559**, and the grayscale version is **19.2613, -1.0277, 1.0465**.

A 20% lighter version of the original color is **35.6977, 9.1481, 7.5342**, and **5.6862, 9.7379, 3.6743** is the 20% darker color. If you saturate the color by 10%, you get **17.5660, 10.2872, 6.0730**, and if you desaturate by 10%, it is **20.5895, 5.8398, 4.5172**.

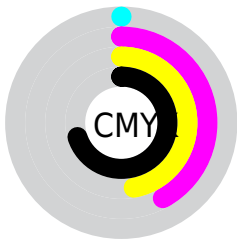
Distribution



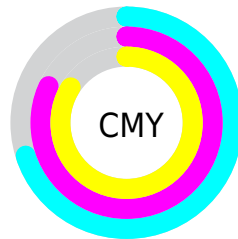
- Red (30%)
- Green (18%)
- Blue (16%)



- Red (30%)
- Yellow (18%)
- Blue (16%)



- Cyan (0%)
- Magenta (42%)
- Yellow (47%)
- Black (70%)



- Cyan (70%)
- Magenta (82%)
- Yellow (84%)

Brightness & Saturation Gradients

These gradients show how the HunterLab color 19.0122, 8.0313, 5.3138 changes by changing the brightness by 10 percent. The first figure shows a shift by +10% for each color and the second figure -10%.

Similar to the brightness gradients but the following saturation gradients show a change of the HunterLab color 19.0122, 8.0313, 5.3138 by changing the saturation by 10% instead.

■ 19.0122, 8.0313,
5.3138

■ 19.0122, 8.0313,
5.3138

■ 116.3942, 9.3815,
14.9530

■ 12.0852, 7.3633,
4.1736

■ 35.6803, 8.9359,
7.4761

■ 5.1058, 11.8456,
3.5741

■ 45.2342, 9.2230,
8.5309

0.0000, NaN, NaN

0.0000, NaN, NaN

■ 55.5152, 9.4209,
9.5830

0.0000, NaN, NaN

■ 66.4750, 9.5406,
10.6383

0.0000, NaN, NaN

■ 78.0740, 9.5904,
11.7007

0.0000, NaN, NaN

0.0000, NaN, NaN

■ 90.2787, 9.5771,

12.7729

0.0000, NaN, NaN

103.0604, 9.5059,
13.8565

19.0122, 8.0313,
5.3138

19.0122, 8.0313,
5.3138

17.5660, 10.2872,
6.0730

20.5895, 5.8398,
4.5172

16.2698, 12.5694,
6.7688

22.2787, 3.7353,
3.6995

15.1458, 14.8069,
7.3685

24.0651, 1.7222,
2.8718

14.2152, 16.8972,
7.8335

25.9361, -0.2016,
2.0410

13.4820, 18.6611,
8.3185

27.8813, -2.0429,
1.2107

■ 13.2801, 19.1464,
8.5183

■ 29.8920, -3.8098,
0.3828

■ 31.9611, -5.5111,
-0.4419

■ 34.0827, -7.1551,
-1.2634

■ 36.2518, -8.7494,
-2.0821

Harmonies

Analogous

The Analogous color harmony consists of three colors that are next to each other on the color wheel.



19.0127, 9.7803, 1.3255



19.0122, 8.0313, 5.3138



19.0127, 3.8295, 7.5441

Triad

The Triadic color harmony groups three colors that are evenly spaced from another and form a triangle on the color wheel.



19.0127, 8.0303, 5.3141



19.0127, -8.8900, 4.9267



19.0127, -0.7065, -10.8098

Complementary

The Complementary color scheme is a pair of colors which are on the opposite of each other on the color wheel.



19.0122, 8.0313, 5.3138



24.0251, -7.5966, -2.6559

Split Complementary

Split-complementary colors differ from the complementary color scheme. The scheme consists of three colors, the original color and two neighbors of the complement color.



19.0127, -5.4192, -9.1259



19.0122, 8.0313, 5.3138



19.0127, -9.8364, 0.7396

Square

The Square scheme is like the rectangle color scheme, but the four colors are evenly spaced on the color wheel.



19.0127, 8.0303, 5.3141



19.0127, -5.9001, 7.3652



19.0127, -8.6336, -4.5501



19.0127, 4.4182, -8.6908

Rectangle

The Rectangle color scheme consists of four colors that form a rectangle on the color wheel.



19.0122, 8.0313, 5.3138



19.0127, 0.3988, 8.1324



19.0127, -8.6336, -4.5501



19.0127, -2.3896, -10.6683

Sweetspot

The Sweet Spot groups the original color and five complimentary colors.



19.0127, 8.0303, 5.3141



31.8918, 1.6703, 3.4983



19.1050, 13.9301, -7.7617



16.1943, 1.0203, 1.8631



66.9319, -3.5713, 3.6365



18.1947, -0.9708, 0.9886

Same Dimension

The Same Dimension uses a secret algorithm to generate beautiful new colors.



19.0127, 8.0303, 5.3141



22.6605, 13.7782, 8.0320



22.9101, 0.5486, 8.6977



13.1456, 0.0806, 1.1301



17.5271, 26.3909, 11.2621



41.7825, 67.1411, 26.9216

Inverse Universe

The Inverse Universe completely reimagines the original color for something new.



24.0251, -7.5966, -2.6559



30.5186, -11.0664, -4.5411



19.4365, -0.5917, -9.4513



13.6527, -1.4669, 0.3315



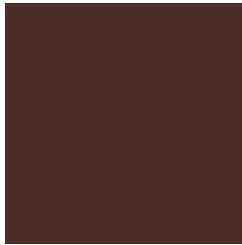
28.9545, -13.0005, -8.1263



69.9032, -30.9077, -20.6520

Previews

White Background



This preview shows how the HunterLab color 19.0122, 8.0313, 5.3138 looks on a white background.

Color Contrast Check

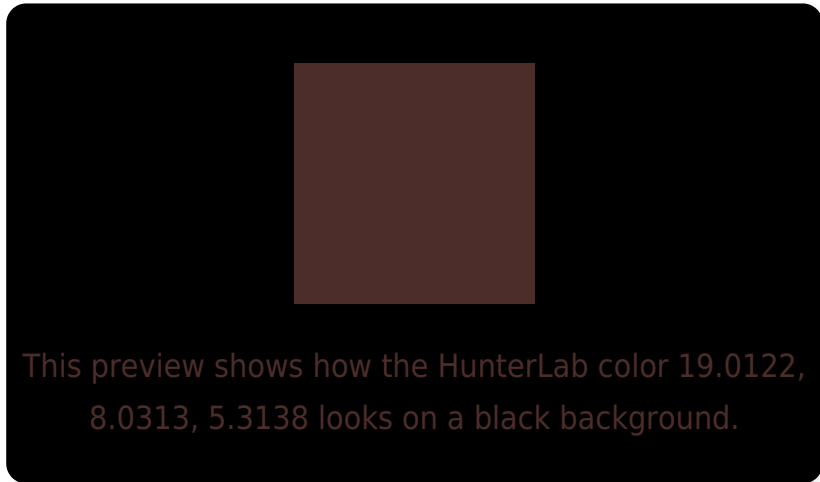
Large Text (above 18pt) WCAG AA ✓ Pass

Any Text WCAG AA ✓ Pass

Large Text (above 18pt) WCAG AAA ✓ Pass

Any Text WCAG AAA ✓ Pass

Black Background



Color Contrast Check

Large Text (above 18pt) WCAG AA × Fail

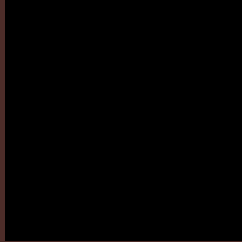
Any Text WCAG AA × Fail

Large Text (above 18pt) WCAG AAA × Fail

Any Text WCAG AAA × Fail

If you want to check with other color combinations, try the [Color Contrast Checker](#).

HunterLab 19.0122, 8.0313, 5.3138 Background



This preview shows how black text looks on a background with the HunterLab color 19.0122, 8.0313, 5.3138.

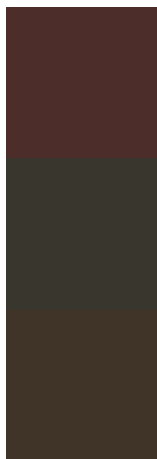


This preview shows how white text looks on a background with the HunterLab color 19.0122, 8.0313,

Color Blindness Simulation

Color vision deficiency is a very complex topic, and I could not describe the different causes any better than Wikipedia does, so if you want to learn more, you should check out their [article about color blindness](#).

Dichromacy



Original Color

19.0122, 8.0313, 5.3138

Protanopia

19.2293, -1.3459, 4.1707

Deuteranopia

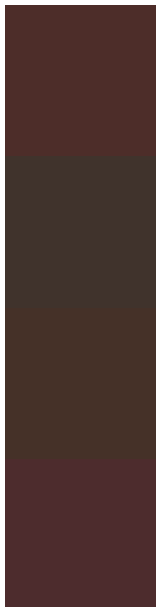
19.2332, 0.9161, 5.6790



Tritanopia

18.9325, 9.0534, 3.4025

Trichromacy



Original Color

19.0122, 8.0313, 5.3138

Protanomaly

19.0774, 1.7279, 4.3801

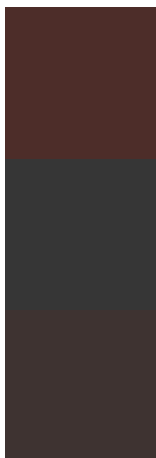
Deuteranomaly

19.0132, 3.6746, 5.5202

Tritanomaly

18.8908, 8.8469, 4.0034

Monochromacy



Original Color

19.0122, 8.0313, 5.3138

Achromatopsia

19.2066, -1.0248, 1.0435

Achromatomaly

19.0093, 1.7102, 2.6804

CSS Examples

Text

The CSS property to change the color of the text to HunterLab 19.0122, 8.0313, 5.3138 is called "color". The color property can be set on classes, ids or directly on the HTML element.

This example shows how text in the color `rgb(77, 45, 41)` looks like.

```
.text, #text, p{  
    color:rgb(77, 45, 41)  
}
```

If you want to add a text shadow in that color use the text-shadow property, you can generate a text shadow directly with our [CSS Text Shadow Generator](#).

Here you see how black text with a 4 pixel rgb(77, 45, 41) colored shadow looks like.

```
.shadow{ text-shadow: 4px 4px 2px rgb(77, 45, 41) }
```

Border

The CSS property to change the border of an element to HunterLab 19.0122, 8.0313, 5.3138 is called "border". The border property can be set on classes, ids or directly on the HTML element.

This example shows the color as border, it can be applied via the CSS property "border" or "border-color".

```
.border, #border, table{ border:4px solid rgb(77, 45, 41) }
```


If only the border color should be changed use the property border-color.

```
.border{ border-color:rgb(77, 45, 41) }
```

If you want to add a box shadow in that color use:

Here you see how a box with a 4 pixel rgb(77, 45, 41) colored shadow looks like.

```
.boxshadow{ -moz-box-shadow:4px 4px 4px  
4px rgb(77, 45, 41); -webkit-box-  
shadow:4px 4px 4px 4px rgb(77, 45, 41);  
box-shadow:4px 4px 4px 4px rgb(77, 45, 41)  
}
```

Background

The CSS property to change the background color of an element to HunterLab 19.0122, 8.0313, 5.3138 is called "background". The background property can be set on classes, ids or directly on the HTML element.

```
.background, #background, body{  
background: rgb(77, 45, 41) }
```

If only the background color should be changed can be used:

```
.background{ background-color: rgb(77, 45,  
41) }
```

This example shows the color as background, it is applied via the CSS property "background".

To optimize and compress your CSS code, you can use our [online CSS compressor and optimizer](#) based on csstidy. If you want to create a linear or radial gradient as background or border, check our [CSS Gradient Generator](#).

Hey! You found this booklet interesting? Support Converting Colors with the new Membership Option!

The pro membership hides all ads, plus gives you double the colors in the color bucket, and more awesome pro features!

[Learn more, Memberships starting at \\$2.50/m!](#)

**Follow me
on Twitter!**

@ConvertingColor