

# Converting Colors

HunterLab(19.0311, 8.3601,  
4.1746)

Have a look what the booklet for  
HunterLab(19.0311, 8.3601, 4.1746)  
contains.

<b>HunterLab(19.0893, 8.4161, 4.1992)</b> .....	3
<b><i>Conversions</i></b> .....	4
<b><i>Details</i></b> .....	6
<b><i>Harmonies</i></b> .....	12
<b><i>Previews</i></b> .....	24
<b><i>Color Blindness Simulation</i></b> .....	28
<b><i>CSS Examples</i></b> .....	31

# Color

**HunterLab(19.0893, 8.4161,  
4.1992)**

# Conversions

## Conversions Part 1

Format	Color
Hex	4D2D2D
RGB	77, 45, 45
RGB Percent	30%, 18%, 18%
CMY	0.6980, 0.8235, 0.8235
CMYK	0.00, 0.42, 0.42, 0.70
HSL	0°, 26%, 24%
HSV	0°, 42%, 30%
XYZ	4.4726, 3.6440, 2.9503
YIQ	54.5680, 19.0720, 6.7840

# Conversions

## Conversions Part 2

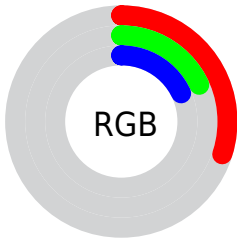
<b>Format</b>	<b>Color</b>
<a href="#">RYB</a>	<a href="#">77, 45, 45</a>
Decimal	<a href="#">5057837</a>
CIELab	<a href="#">22.46, 14.75, 6.24</a>
CIELCh	<a href="#">22, 16.011, 22.924</a>
Yxy	<a href="#">3.6442, 0.4041, 0.3293</a>
Android (android.graphics.Color)	<a href="#">4283247917 (0xFF4D2D2D)</a>
YUV	<a href="#">54.5680, -4.7170, 19.6729</a>
Hunter-Lab	<a href="#">19.0893, 8.4161, 4.1992</a>

# Details

The HunterLab color **19.0893, 8.4161, 4.1992** is a dark color, and the websafe version is hex **663333**. A complement of this color would be **25.3006, -8.4675, -1.0117**, and the grayscale version is **19.4106, -1.0357, 1.0546**.

A 20% lighter version of the original color is **35.7065, 9.4097, 5.7322**, and **5.8316, 9.9869, 3.7683** is the 20% darker color. If you saturate the color by 10%, you get **17.4794, 10.9765, 4.9418**, and if you desaturate by 10%, it is **20.8595, 5.9044, 3.4857**.

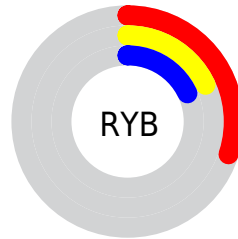
# Distribution



Red (30%)

Green (18%)

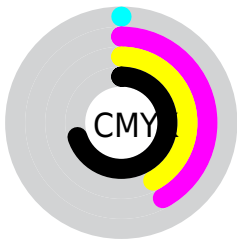
Blue (18%)



Red (30%)

Yellow (18%)

Blue (18%)

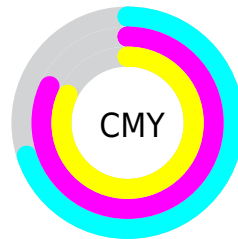


Cyan (0%)

Magenta (42%)

Yellow (42%)

Black (70%)



Cyan (70%)

Magenta (82%)

Yellow (82%)

# Brightness & Saturation Gradients

These gradients show how the HunterLab color 19.0893, 8.4161, 4.1992 changes by changing the brightness by 10 percent. The first figure shows a shift by +10% for each color and the second figure -10%.

Similar to the brightness gradients but the following saturation gradients show a change of the HunterLab color 19.0893, 8.4161, 4.1992 by changing the saturation by 10% instead.



■ 19.0893, 8.4161,  
4.1992

■ 19.0893, 8.4161,  
4.1992

■ 116.5352, 9.9964,  
12.5211

■ 12.1515, 7.7155,  
3.2885

■ 35.7754, 9.3811,  
5.9746

■ 5.2169, 12.0381,  
3.6519

■ 45.3371, 9.6959,  
6.8663

0.0000, NaN, NaN

■ 55.6253, 9.9202,  
7.7689

0.0000, NaN, NaN

■ 66.5920, 10.0650,  
8.6857

0.0000, NaN, NaN

■ 78.1974, 10.1388,  
9.6183

0.0000, NaN, NaN

■ 90.4083, 10.1485,

0.0000, NaN, NaN

10.5680

0.0000, NaN, NaN

103.1958, 10.0995,  
11.5354

19.0893, 8.4161,  
4.1992

19.0893, 8.4161,  
4.1992

17.4794, 10.9765,  
4.9418

20.8595, 5.9044,  
3.4857

16.0564, 13.5251,  
5.6932

22.7645, 3.4750,  
2.8089

14.8508, 15.9532,  
6.4199

24.7847, 1.1370,  
2.1711

13.8911, 18.1082,  
7.0728

26.9040, -1.1111,  
1.5705

13.1652, 19.8975,  
7.6200

29.1091, -3.2763,  
1.0039

■ 12.5613, 21.5097,  
8.1168

■ 31.3894, -5.3682,  
0.4672

■ 33.7362, -7.3965,  
-0.0433

■ 36.1425, -9.3704,  
-0.5313

■ 38.6025, -11.2984,  
-1.0001

# Harmonies

## Analogous

The Analogous color harmony consists of three colors that are next to each other on the color wheel.



19.0898, 9.2143, -0.0935



19.0893, 8.4161, 4.1992



19.0898, 4.9737, 6.8775

# Triad

The Triadic color harmony groups three colors that are evenly spaced from another and form a triangle on the color wheel.



19.0898, 8.4151, 4.1995



19.0898, -7.9446, 5.6755



19.0898, -2.1619, -10.1123

# Complementary

The Complementary color scheme is a pair of colors which are on the opposite of each other on the color wheel.



19.0893, 8.4161, 4.1992



25.3006, -8.4675, -1.0117

# Split Complementary

Split-complementary colors differ from the complementary color scheme. The scheme consists of three colors, the original color and two neighbors of the complement color.



19.0898, -6.3541, -7.5434



19.0893, 8.4161, 4.1992



19.0898, -9.4683, 2.1063

# Square

The Square scheme is like the rectangle color scheme, but the four colors are evenly spaced on the color wheel.



19.0898, 8.4151, 4.1995



19.0898, -4.5391, 7.5681



19.0898, -8.9167, -2.7754



19.0898, 2.7750, -9.1468



# Rectangle

The Rectangle color scheme consists of four colors that form a rectangle on the color wheel.



19.0893, 8.4161, 4.1992



19.0898, 1.8148, 7.7545



19.0898, -8.9167, -2.7754



19.0898, -3.6977, -9.6156

# Sweetspot

The Sweet Spot groups the original color and five complimentary colors.



19.0898, 8.4151, 4.1995



32.0547, 1.7430, 2.8993



19.9760, 12.7455, -8.3070



16.3572, 0.9778, 1.5091



66.9319, -3.5713, 3.6365



18.1947, -0.9708, 0.9886



# Same Dimension

The Same Dimension uses a secret algorithm to generate beautiful new colors.



19.0898, 8.4151, 4.1995



22.7244, 14.3822, 6.4622



22.5937, 1.5668, 7.4346



13.0511, 0.2438, 1.0243



16.8075, 28.7813, 10.8605



40.9154, 70.0670, 26.4385



# Inverse Universe

The Inverse Universe completely reimagines the original color for something new.



25.3006, -8.4675, -1.0117



32.5412, -12.6258, -1.8830



21.0505, -2.1523, -6.8420



13.7520, -1.6260, 0.4481



32.3433, -17.1457, -3.4137

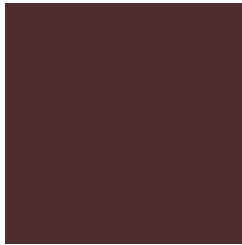


78.7360, -41.7390, -8.3106



# Previews

## White Background



This preview shows how the HunterLab color 19.0893, 8.4161, 4.1992 looks on a white background.

## Color Contrast Check

Large Text (above 18pt) WCAG AA ✓ Pass

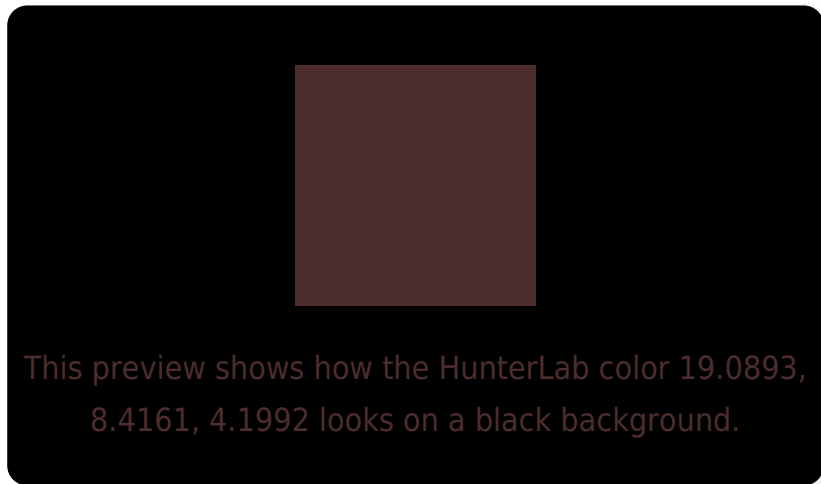
Any Text WCAG AA ✓ Pass

Large Text (above 18pt) WCAG AAA ✓ Pass

Any Text WCAG AAA ✓ Pass



# Black Background



## Color Contrast Check

Large Text (above 18pt) WCAG AA × Fail

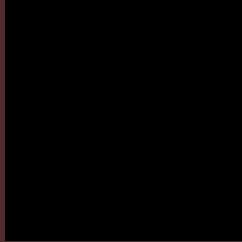
Any Text WCAG AA × Fail

Large Text (above 18pt) WCAG AAA × Fail

Any Text WCAG AAA × Fail

If you want to check with other color combinations, try the [Color Contrast Checker](#).

# HunterLab 19.0893, 8.4161, 4.1992 Background



This preview shows how black text looks on a background with the HunterLab color 19.0893, 8.4161, 4.1992.



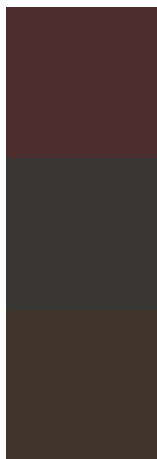
This preview shows how white text looks on a background with the HunterLab color 19.0893, 8.4161,



# Color Blindness Simulation

Color vision deficiency is a very complex topic, and I could not describe the different causes any better than Wikipedia does, so if you want to learn more, you should check out their [article about color blindness](#).

## Dichromacy



### Original Color

19.0893, 8.4161, 4.1992

### Protanopia

19.2597, -1.0275, 2.5602

### Deuteranopia

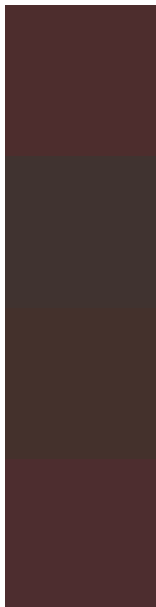
19.2213, 1.0249, 4.5118



## Tritanopia

19.1519, 8.7277, 3.2974

# Trichromacy



## Original Color

19.0893, 8.4161, 4.1992

## Protanomaly

19.1600, 2.1671, 3.1911

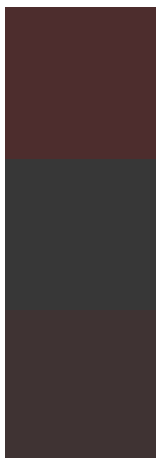
## Deuteranomaly

18.9932, 3.7606, 4.3309

## Tritanomaly

19.1306, 8.6216, 3.6043

# Monochromacy



## Original Color

19.0893, 8.4161, 4.1992

## Achromatopsia

19.5459, -1.0429, 1.0620

## Achromatomaly

19.1401, 2.2351, 2.1313

# CSS Examples

## Text

The CSS property to change the color of the text to HunterLab 19.0893, 8.4161, 4.1992 is called "color". The color property can be set on classes, ids or directly on the HTML element.

This example shows how text in the color `rgb(77, 45, 45)` looks like.

```
.text, #text, p{  
    color:rgb(77, 45, 45)  
}
```

If you want to add a text shadow in that color use the text-shadow property, you can generate a text shadow directly with our [CSS Text Shadow Generator](#).

Here you see how black text with a 4 pixel rgb(77, 45, 45) colored shadow looks like.

```
.shadow{ text-shadow: 4px 4px 2px rgb(77, 45, 45) }
```

## Border

The CSS property to change the border of an element to HunterLab 19.0893, 8.4161, 4.1992 is called "border". The border property can be set on classes, ids or directly on the HTML element.

This example shows the color as border, it can be applied via the CSS property "border" or "border-color".

```
.border, #border, table{ border:4px solid rgb(77, 45, 45) }
```



If only the border color should be changed use the property `border-color`.

```
.border{ border-color:rgb(77, 45, 45) }
```

If you want to add a box shadow in that color use:

Here you see how a box with a 4 pixel `rgb(77, 45, 45)` colored shadow looks like.

```
.boxshadow{ -moz-box-shadow:4px 4px 4px  
4px rgb(77, 45, 45); -webkit-box-  
shadow:4px 4px 4px 4px rgb(77, 45, 45);  
box-shadow:4px 4px 4px 4px rgb(77, 45, 45)  
}
```

# Background

The CSS property to change the background color of an element to HunterLab 19.0893, 8.4161, 4.1992 is called "background". The background property can be set on classes, ids or directly on the HTML element.

```
.background, #background, body{  
background: rgb(77, 45, 45) }
```

If only the background color should be changed can be used:

```
.background{ background-color: rgb(77, 45,  
45) }
```

This example shows the color as background, it is applied via the CSS property "background".

To optimize and compress your CSS code, you can use our [online CSS compressor and optimizer](#) based on csstidy. If you want to create a linear or radial gradient as background or border, check our [CSS Gradient Generator](#).

Hey! You found this booklet interesting? Support Converting Colors with the new Membership Option!

The pro membership hides all ads, plus gives you double the colors in the color bucket, and more awesome pro features!

**[Learn more, Memberships starting at \\$2.50/m!](#)**

**Follow me  
on Twitter!**

@ConvertingColor