

Converting Colors

HunterLab(19.0326, 9.1631,
4.4455)

Have a look what the booklet for
HunterLab(19.0326, 9.1631, 4.4455)
contains.

HunterLab(18.9813, 9.0741, 4.4120)	3
<i>Conversions</i>	4
<i>Details</i>	6
<i>Harmonies</i>	12
<i>Previews</i>	24
<i>Color Blindness Simulation</i>	28
<i>CSS Examples</i>	31

Color

**HunterLab(18.9813, 9.0741,
4.4120)**

Conversions

Conversions Part 1

Format	Color
Hex	4E2C2C
RGB	78, 44, 44
RGB Percent	31%, 17%, 17%
CMY	0.6941, 0.8274, 0.8275
CMYK	0.00, 0.44, 0.44, 0.69
HSL	0°, 28%, 24%
HSV	0°, 44%, 31%
XYZ	4.4972, 3.6029, 2.8412
YIQ	54.1660, 20.2640, 7.2080

Conversions

Conversions Part 2

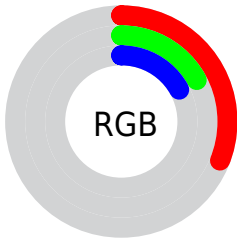
Format	Color
R_YB	78, 44, 44
Decimal	5123116
CIE Lab	22.31, 15.70, 6.74
CIE LCh	22, 17.085, 23.217
Yxy	3.6031, 0.4110, 0.3293
Android (android.graphics.Color)	4283313196 (0xFF4E2C2C)
YUV	54.1660, -5.0118, 20.9024
Hunter-Lab	18.9813, 9.0741, 4.4120

Details

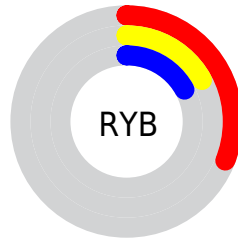
The HunterLab color **18.9813, 9.0741, 4.4120** is a dark color, and the websafe version is hex **663333**. A complement of this color would be **25.5617, -8.8531, -1.1222**, and the grayscale version is **19.2748, -1.0285, 1.0472**.

A 20% lighter version of the original color is **35.6381, 10.3224, 6.4171**, and **5.8316, 9.9869, 3.7683** is the 20% darker color. If you saturate the color by 10%, you get **17.3849, 11.6774, 5.1699**, and if you desaturate by 10%, it is **20.7464, 6.5099, 3.6806**.

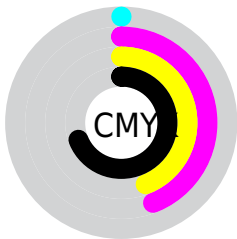
Distribution



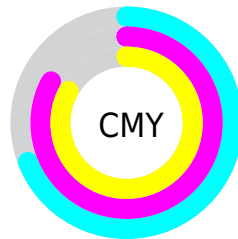
- Red (31%)
- Green (17%)
- Blue (17%)



- Red (31%)
- Yellow (17%)
- Blue (17%)



- Cyan (0%)
- Magenta (44%)
- Yellow (44%)
- Black (69%)



- Cyan (69%)
- Magenta (83%)
- Yellow (83%)

Brightness & Saturation Gradients

These gradients show how the HunterLab color 18.9813, 9.0741, 4.4120 changes by changing the brightness by 10 percent. The first figure shows a shift by +10% for each color and the second figure -10%.

Similar to the brightness gradients but the following saturation gradients show a change of the HunterLab color 18.9813, 9.0741, 4.4120 by changing the saturation by 10% instead.

■ 18.9813, 9.0741,
4.4120

■ 18.9813, 9.0741,
4.4120

■ 116.3377, 11.0786,
12.9854

■ 12.0586, 8.3121,
3.4545

■ 35.6422, 10.1516,
6.2615

■ 5.0606, 13.2500,
3.5424

■ 45.1929, 10.5178,
7.1843

0.0000, NaN, NaN

0.0000, NaN, NaN

■ 55.4710, 10.7906,
8.1155

0.0000, NaN, NaN

■ 66.4281, 10.9815,
9.0586

0.0000, NaN, NaN

■ 78.0245, 11.0993,
10.0160

0.0000, NaN, NaN

0.0000, NaN, NaN

■ 90.2268, 11.1511,

10.9890

0.0000, NaN, NaN

103.0062, 11.1427,
11.9786

18.9813, 9.0741,
4.4120

18.9813, 9.0741,
4.4120

17.3849, 11.6774,
5.1699

20.7464, 6.5099,
3.6806

15.9851, 14.2493,
5.9308

22.6535, 4.0249,
2.9853

14.8130, 16.6687,
6.6570

24.6817, 1.6320,
2.3296

13.8964, 18.7721,
7.2957

26.8138, -0.6684,
1.7124

13.1882, 20.5512,
7.8408

29.0357, -2.8829,
1.1305

■ 12.7271, 21.7935,
8.2239

■ 31.3360, -5.0207,
0.5799

■ 33.7057, -7.0919,
0.0566

■ 36.1372, -9.1060,
-0.4431

■ 38.6244, -11.0718,
-0.9226

Harmonies

Analogous

The Analogous color harmony consists of three colors that are next to each other on the color wheel.



18.9818, 9.9661, -0.1244



18.9813, 9.0741, 4.4120



18.9818, 5.3496, 7.1799

Triad

The Triadic color harmony groups three colors that are evenly spaced from another and form a triangle on the color wheel.



18.9818, 9.0731, 4.4123



18.9818, -8.3742, 5.8904



18.9818, -2.1800, -11.0410

Complementary

The Complementary color scheme is a pair of colors which are on the opposite of each other on the color wheel.



18.9813, 9.0741, 4.4120



25.5617, -8.8531, -1.1222

Split Complementary

Split-complementary colors differ from the complementary color scheme. The scheme consists of three colors, the original color and two neighbors of the complement color.



18.9818, -6.6358, -8.2685



18.9813, 9.0741, 4.4120



18.9818, -9.9544, 2.1223

Square

The Square scheme is like the rectangle color scheme, but the four colors are evenly spaced on the color wheel.



18.9818, 9.0731, 4.4123



18.9818, -4.7956, 7.8590



18.9818, -9.3540, -3.1102



18.9818, 3.0893, -9.9467

Rectangle

The Rectangle color scheme consists of four colors that form a rectangle on the color wheel.



18.9813, 9.0741, 4.4120



18.9818, 1.9594, 8.0683



18.9818, -9.3540, -3.1102



18.9818, -3.8146, -10.5103

Sweetspot

The Sweet Spot groups the original color and five complimentary colors.



18.9818, 9.0731, 4.4123



32.6242, 2.1224, 3.0676



19.9277, 13.6550, -8.9264



16.1035, 1.2643, 1.5868



66.9319, -3.5713, 3.6365



18.1947, -0.9708, 0.9886

Same Dimension

The Same Dimension uses a secret algorithm to generate beautiful new colors.



18.9818, 9.0731, 4.4123



22.8905, 15.5398, 6.8622



22.6694, 1.7872, 7.7679



13.0511, 0.2438, 1.0243



16.8075, 28.7812, 10.8606



40.9154, 70.0669, 26.4385

Inverse Universe

The Inverse Universe completely reimagines the original color for something new.



25.5617, -8.8531, -1.1222



33.3367, -13.2868, -2.0473



21.0310, -2.1532, -7.3983



13.7519, -1.6260, 0.4481



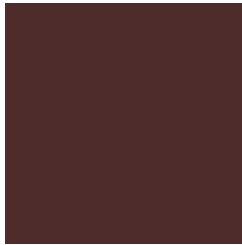
32.3432, -17.1455, -3.4139



78.7356, -41.7385, -8.3112

Previews

White Background



This preview shows how the HunterLab color 18.9813, 9.0741, 4.4120 looks on a white background.

Color Contrast Check

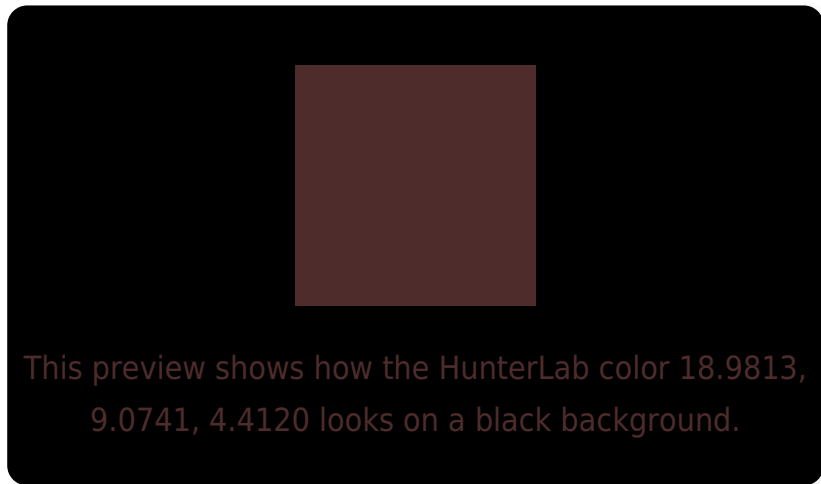
Large Text (above 18pt) WCAG AA ✓ Pass

Any Text WCAG AA ✓ Pass

Large Text (above 18pt) WCAG AAA ✓ Pass

Any Text WCAG AAA ✓ Pass

Black Background



Color Contrast Check

Large Text (above 18pt) WCAG AA × Fail

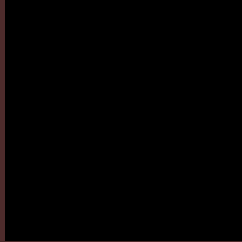
Any Text WCAG AA × Fail

Large Text (above 18pt) WCAG AAA × Fail

Any Text WCAG AAA × Fail

If you want to check with other color combinations, try the [Color Contrast Checker](#).

HunterLab 18.9813, 9.0741, 4.4120 Background



This preview shows how black text looks on a background with the HunterLab color 18.9813, 9.0741, 4.4120.



This preview shows how white text looks on a background with the HunterLab color 18.9813, 9.0741,

Color Blindness Simulation

Color vision deficiency is a very complex topic, and I could not describe the different causes any better than Wikipedia does, so if you want to learn more, you should check out their [article about color blindness](#).

Dichromacy



Original Color

18.9813, 9.0741, 4.4120

Protanopia

19.2376, -1.1491, 2.8785

Deuteranopia

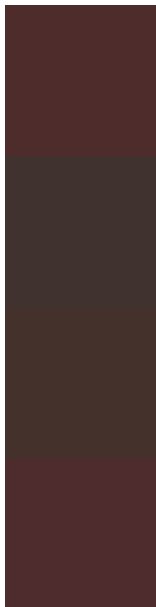
19.2020, 0.9209, 4.7914



Tritanopia

19.0429, 9.3779, 3.5251

Trichromacy



Original Color

18.9813, 9.0741, 4.4120

Protanomaly

18.9114, 2.4705, 3.2650

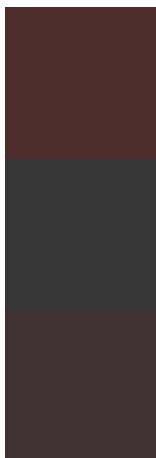
Deuteranomaly

18.9736, 3.6583, 4.6136

Tritanomaly

19.0219, 9.2745, 3.8270

Monochromacy



Original Color

18.9813, 9.0741, 4.4120

Achromatopsia

19.2066, -1.0248, 1.0435

Achromatomaly

18.8898, 2.5319, 2.2127

CSS Examples

Text

The CSS property to change the color of the text to HunterLab 18.9813, 9.0741, 4.4120 is called "color". The color property can be set on classes, ids or directly on the HTML element.

This example shows how text in the color `rgb(78, 44, 44)` looks like.

```
.text, #text, p{  
    color:rgb(78, 44, 44)  
}
```

If you want to add a text shadow in that color use the text-shadow property, you can generate a text shadow directly with our [CSS Text Shadow Generator](#).

Here you see how black text with a 4 pixel rgb(78, 44, 44) colored shadow looks like.

```
.shadow{ text-shadow: 4px 4px 2px rgb(78, 44, 44) }
```

Border

The CSS property to change the border of an element to HunterLab 18.9813, 9.0741, 4.4120 is called "border". The border property can be set on classes, ids or directly on the HTML element.

This example shows the color as border, it can be applied via the CSS property "border" or "border-color".

```
.border, #border, table{ border:4px solid rgb(78, 44, 44) }
```


If only the border color should be changed use the property border-color.

```
.border{ border-color:rgb(78, 44, 44) }
```

If you want to add a box shadow in that color use:

Here you see how a box with a 4 pixel rgb(78, 44, 44) colored shadow looks like.

```
.boxshadow{ -moz-box-shadow:4px 4px 4px  
4px rgb(78, 44, 44); -webkit-box-  
shadow:4px 4px 4px 4px rgb(78, 44, 44);  
box-shadow:4px 4px 4px 4px rgb(78, 44, 44)  
}
```

Background

The CSS property to change the background color of an element to HunterLab 18.9813, 9.0741, 4.4120 is called "background". The background property can be set on classes, ids or directly on the HTML element.

```
.background, #background, body{  
background: rgb(78, 44, 44) }
```

If only the background color should be changed can be used:

```
.background{ background-color: rgb(78, 44,  
44) }
```

This example shows the color as background, it is applied via the CSS property "background".

To optimize and compress your CSS code, you can use our [online CSS compressor and optimizer](#) based on csstidy. If you want to create a linear or radial gradient as background or border, check our [CSS Gradient Generator](#).

Hey! You found this booklet interesting? Support Converting Colors with the new Membership Option!

The pro membership hides all ads, plus gives you double the colors in the color bucket, and more awesome pro features!

[Learn more, Memberships starting at \\$2.50/m!](#)

**Follow me
on Twitter!**

@ConvertingColor