

Converting Colors

HunterLab(19.0563, 1.4373,
6.0623)

Have a look what the booklet for
HunterLab(19.0563, 1.4373, 6.0623)
contains.

HunterLab(19.0563, 1.4373, 6.0623)	3
<i>Conversions</i>	4
<i>Details</i>	6
<i>Harmonies</i>	12
<i>Previews</i>	24
<i>Color Blindness Simulation</i>	28
<i>CSS Examples</i>	31

Color

**HunterLab(19.0563, 1.4373,
6.0623)**

Conversions

Conversions Part 1

Format	Color
Hex	413326
RGB	65, 51, 38
RGB Percent	25%, 20%, 15%
CMY	0.7451, 0.8000, 0.8510
CMYK	0.00, 0.22, 0.42, 0.75
HSL	29°, 26%, 20%
HSV	29°, 42%, 25%
XYZ	3.7137, 3.6314, 2.3389
YIQ	53.7040, 12.5170, -1.0750

Conversions

Conversions Part 2

Format	Color
RYB	65, 63, 38
Decimal	4272934
CIELab	22.41, 4.09, 10.63
CIElCh	22, 11.393, 68.971
Yxy	3.6316, 0.3835, 0.3750
Android (android.graphics.Color)	4282463014 (0xFF413326)
YUV	53.7040, -7.7421, 9.9066
Hunter-Lab	19.0563, 1.4373, 6.0623

Details

The HunterLab color **19.0563, 1.4373, 6.0623** is a dark color, and the websafe version is hex **333333**. A complement of this color would be **18.0266, -2.0246, -5.3761**, and the grayscale version is **19.1292, -1.0207, 1.0393**.

A 20% lighter version of the original color is **35.7090, 1.3704, 8.4399**, and **5.1766, 3.4763, 3.2506** is the 20% darker color. If you saturate the color by 10%, you get **18.1916, 2.2712, 6.9108**, and if you desaturate by 10%, it is **19.9563, 0.6812, 5.0820**.

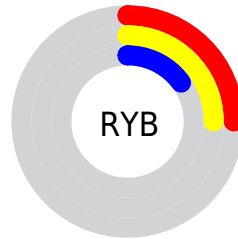
Distribution



Red (25%)

Green (20%)

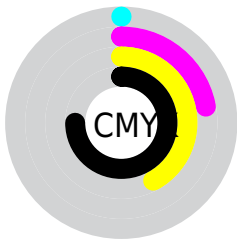
Blue (15%)



Red (25%)

Yellow (25%)

Blue (15%)

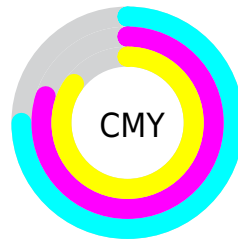


Cyan (0%)

Magenta (22%)

Yellow (42%)

Black (75%)



Cyan (75%)

Magenta (80%)

Yellow (85%)

Brightness & Saturation Gradients

These gradients show how the HunterLab color 19.0563, 1.4373, 6.0623 changes by changing the brightness by 10 percent. The first figure shows a shift by +10% for each color and the second figure -10%.

Similar to the brightness gradients but the following saturation gradients show a change of the HunterLab color 19.0563, 1.4373, 6.0623 by changing the saturation by 10% instead.

■ 19.0563, 1.4373,
6.0623

■ 19.0563, 1.4373,
6.0623

■ 116.4748, -1.8101,
16.6624

■ 12.1231, 1.4816,
4.8038

■ 35.7346, 1.0927,
8.5080

■ 5.1697, 3.1698,
3.6188

■ 45.2930, 0.8213,
9.6820

0.0000, NaN, NaN

0.0000, NaN, NaN

■ 55.5782, 0.4946,
10.8431

0.0000, NaN, NaN

■ 66.5419, 0.1182,
11.9995

0.0000, NaN, NaN

■ 78.1446, -0.3036,
13.1564

0.0000, NaN, NaN

0.0000, NaN, NaN

■ 90.3528, -0.7674,

14.3175

0.0000, NaN, NaN

103.1378, -1.2703,
15.4856

19.0563, 1.4373,
6.0623

19.0563, 1.4373,
6.0623

18.1916, 2.2712,
6.9108

19.9563, 0.6812,
5.0820

17.3637, 3.1877,
7.6147

20.8878, 0.0014,
3.9807

16.5758, 4.1870,
8.1627

21.8488, -0.6072,
2.7697

15.8311, 5.2677,
8.5445

22.8372, -1.1491,
1.4590

15.1283, 6.4037,
8.8151

23.8510, -1.6289,
0.0577

■ 14.5587, 7.3546,
9.0998

■ 24.8886, -2.0513,
-1.4260

■ 25.9482, -2.4204,
-2.9847

■ 27.0284, -2.7406,
-4.6120

■ 28.1281, -3.0155,
-6.3022

Harmonies

Analogous

The Analogous color harmony consists of three colors that are next to each other on the color wheel.



19.0567, 4.4533, 4.6137



19.0563, 1.4373, 6.0623



19.0567, -2.0474, 6.3031

Triad

The Triadic color harmony groups three colors that are evenly spaced from another and form a triangle on the color wheel.



19.0567, 1.4366, 6.0626



19.0567, -7.1721, 0.0205



19.0567, 3.3637, -4.5880

Complementary

The Complementary color scheme is a pair of colors which are on the opposite of each other on the color wheel.



19.0563, 1.4373, 6.0623



18.0266, -2.0246, -5.3761

Split Complementary

Split-complementary colors differ from the complementary color scheme. The scheme consists of three colors, the original color and two neighbors of the complement color.



19.0567, 0.0341, -6.3594



19.0563, 1.4373, 6.0623



19.0567, -5.9338, -3.4030

Square

The Square scheme is like the rectangle color scheme, but the four colors are evenly spaced on the color wheel.



19.0567, 1.4366, 6.0626



19.0567, -6.8556, 3.1777



19.0567, -3.3540, -5.8908



19.0567, 5.6201, -1.3843

Rectangle

The Rectangle color scheme consists of four colors that form a rectangle on the color wheel.



19.0563, 1.4373, 6.0623



19.0567, -4.1439, 5.7975



19.0567, -3.3540, -5.8908



19.0567, 2.3237, -5.3946

Sweetspot

The Sweet Spot groups the original color and five complimentary colors.



19.0567, 1.4366, 6.0626



28.2250, -0.7153, 3.7513



16.6182, 8.5341, -1.3710



14.7915, -0.3614, 1.9993



63.7533, -3.4017, 3.4638



15.6573, -0.8354, 0.8507

Same Dimension

The Same Dimension uses a secret algorithm to generate beautiful new colors.



19.0567, 1.4366, 6.0626



23.5401, 3.0112, 9.0231



22.2303, -3.8227, 8.7405



11.9221, -0.4179, 1.2854



21.3119, 12.3057, 13.3477



51.6224, 34.9483, 32.4213

Inverse Universe

The Inverse Universe completely reimagines the original color for something new.



18.0266, -2.0246, -5.3761



21.8873, -2.4911, -9.3609



14.9608, 3.3572, -10.5418



11.8040, -0.8197, -0.0234



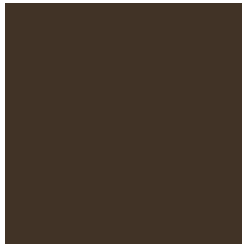
17.7844, 2.0375, -26.6273



42.3948, 9.1489, -72.7396

Previews

White Background



This preview shows how the HunterLab color 19.0563, 1.4373, 6.0623 looks on a white background.

Color Contrast Check

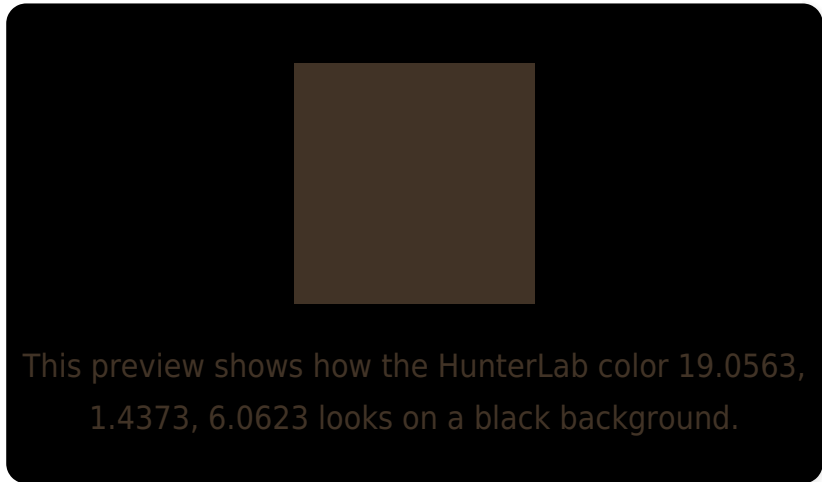
Large Text (above 18pt) WCAG AA ✓ Pass

Any Text WCAG AA ✓ Pass

Large Text (above 18pt) WCAG AAA ✓ Pass

Any Text WCAG AAA ✓ Pass

Black Background



Color Contrast Check

Large Text (above 18pt) WCAG AA × Fail

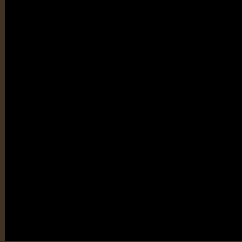
Any Text WCAG AA × Fail

Large Text (above 18pt) WCAG AAA × Fail

Any Text WCAG AAA × Fail

If you want to check with other color combinations, try the [Color Contrast Checker](#).

HunterLab 19.0563, 1.4373, 6.0623 Background



This preview shows how black text looks on a background with the HunterLab color 19.0563, 1.4373, 6.0623.

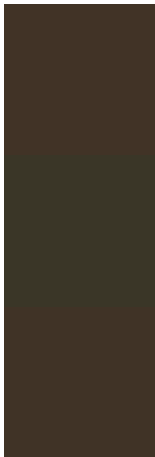


This preview shows how white text looks on a background with the HunterLab color 19.0563, 1.4373,

Color Blindness Simulation

Color vision deficiency is a very complex topic, and I could not describe the different causes any better than Wikipedia does, so if you want to learn more, you should check out their [article about color blindness](#).

Dichromacy



Original Color

19.0563, 1.4373, 6.0623

Protanopia

19.1947, -1.6908, 5.8691

Deuteranopia

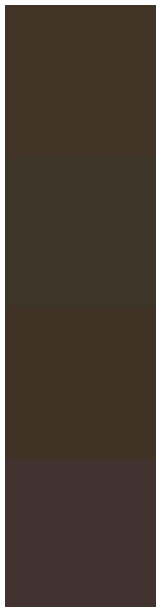
18.9673, 1.1386, 5.9754



Tritanopia

19.0050, 4.1945, 1.2766

Trichromacy



Original Color

19.0563, 1.4373, 6.0623

Protanomaly

19.1958, -0.4534, 5.8918

Deuteranomaly

18.9673, 1.1386, 5.9754

Tritanomaly

19.1124, 3.1720, 3.1579

Monochromacy



Original Color

19.0563, 1.4373, 6.0623

Achromatopsia

19.2066, -1.0248, 1.0435

Achromatomaly

19.1289, -0.3347, 3.1141

CSS Examples

Text

The CSS property to change the color of the text to HunterLab 19.0563, 1.4373, 6.0623 is called "color". The color property can be set on classes, ids or directly on the HTML element.

This example shows how text in the color `rgb(65, 51, 38)` looks like.

```
.text, #text, p{  
    color:rgb(65, 51, 38)  
}
```

If you want to add a text shadow in that color use the text-shadow property, you can generate a text shadow directly with our [CSS Text Shadow Generator](#).

Here you see how black text with a 4 pixel rgb(65, 51, 38) colored shadow looks like.

```
.shadow{ text-shadow: 4px 4px 2px rgb(65, 51, 38) }
```

Border

The CSS property to change the border of an element to HunterLab 19.0563, 1.4373, 6.0623 is called "border". The border property can be set on classes, ids or directly on the HTML element.

This example shows the color as border, it can be applied via the CSS property "border" or "border-color".

```
.border, #border, table{ border:4px solid rgb(65, 51, 38) }
```


If only the border color should be changed use the property `border-color`.

```
.border{ border-color:rgb(65, 51, 38) }
```

If you want to add a box shadow in that color use:

Here you see how a box with a 4 pixel `rgb(65, 51, 38)` colored shadow looks like.

```
.boxshadow{ -moz-box-shadow:4px 4px 4px  
4px rgb(65, 51, 38); -webkit-box-  
shadow:4px 4px 4px 4px rgb(65, 51, 38);  
box-shadow:4px 4px 4px 4px rgb(65, 51, 38)  
}
```

Background

The CSS property to change the background color of an element to HunterLab 19.0563, 1.4373, 6.0623 is called "background". The background property can be set on classes, ids or directly on the HTML element.

```
.background, #background, body{  
background: rgb(65, 51, 38) }
```

If only the background color should be changed can be used:

```
.background{ background-color: rgb(65, 51,  
38) }
```

This example shows the color as background, it is applied via the CSS property "background".

To optimize and compress your CSS code, you can use our [online CSS compressor and optimizer](#) based on csstidy. If you want to create a linear or radial gradient as background or border, check our [CSS Gradient Generator](#).

Hey! You found this booklet interesting? Support Converting Colors with the new Membership Option!

The pro membership hides all ads, plus gives you double the colors in the color bucket, and more awesome pro features!

[Learn more, Memberships starting at \\$2.50/m!](#)

**Follow me
on Twitter!**

@ConvertingColor