

Converting Colors

HunterLab(19.1183, 7.5470,
3.5725)

Have a look what the booklet for
HunterLab(19.1183, 7.5470, 3.5725)
contains.

HunterLab(19.1183, 7.5470, 3.5725)	3
<i>Conversions</i>	4
<i>Details</i>	6
<i>Harmonies</i>	12
<i>Previews</i>	24
<i>Color Blindness Simulation</i>	28
<i>CSS Examples</i>	31

Color

**HunterLab(19.1183, 7.5470,
3.5725)**

Conversions

Conversions Part 1

Format	Color
Hex	4B2E2F
RGB	75, 46, 47
RGB Percent	29%, 18%, 18%
CMY	0.7059, 0.8196, 0.8157
CMYK	0.00, 0.39, 0.37, 0.71
HSL	358°, 24%, 24%
HSV	358°, 39%, 29%
XYZ	4.3917, 3.6551, 3.1634
YIQ	54.7850, 16.9630, 6.4590

Conversions

Conversions Part 2

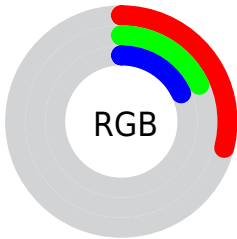
Format	Color
R_{YB}	75, 46, 47
Decimal	4927023
CIE Lab	22.50, 13.48, 4.89
CIE LCh	22, 14.343, 19.936
Yxy	3.6553, 0.3918, 0.3261
Android (android.graphics.Color)	4283117103 (0xFF4B2E2F)
YUV	54.7850, -3.8380, 17.7286
Hunter-Lab	19.1183, 7.5470, 3.5725

Details

The HunterLab color **19.1183, 7.5470, 3.5725** is a dark color, and the websafe version is hex **663333**. A complement of this color would be **24.7134, -8.0083, -0.4555**, and the grayscale version is **19.4819, -1.0395, 1.0585**.

A 20% lighter version of the original color is **35.7835, 8.5144, 5.0398**, and **5.6862, 9.7379, 3.6743** is the 20% darker color. If you saturate the color by 10%, you get **17.5100, 10.0309, 4.2403**, and if you desaturate by 10%, it is **20.8728, 5.1143, 2.9527**.

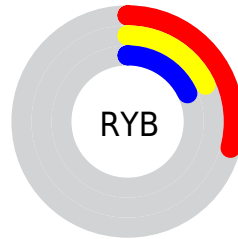
Distribution



Red (29%)

Green (18%)

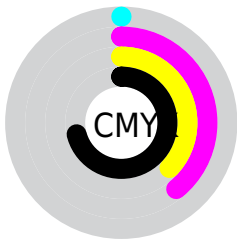
Blue (18%)



Red (29%)

Yellow (18%)

Blue (18%)

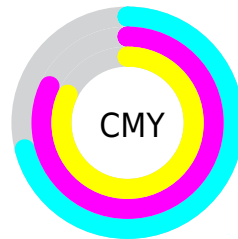


Cyan (0%)

Magenta (39%)

Yellow (37%)

Black (71%)



Cyan (71%)

Magenta (82%)

Yellow (82%)

Brightness & Saturation Gradients

These gradients show how the HunterLab color 19.1183, 7.5470, 3.5725 changes by changing the brightness by 10 percent. The first figure shows a shift by +10% for each color and the second figure -10%.

Similar to the brightness gradients but the following saturation gradients show a change of the HunterLab color 19.1183, 7.5470, 3.5725 by changing the saturation by 10% instead.

■ 19.1183, 7.5470,
3.5725

■ 19.1183, 7.5470,
3.5725

■ 116.5882, 8.5739,
11.2214

■ 12.1764, 6.9270,
2.7842

■ 35.8111, 8.3651,
5.1519

■ 5.2581, 10.8935,
3.6807

■ 45.3758, 8.6130,
5.9605

0.0000, NaN, NaN

■ 55.6667, 8.7740,
6.7868

0.0000, NaN, NaN

■ 66.6360, 8.8586,
7.6325

0.0000, NaN, NaN

■ 78.2438, 8.8750,
8.4985

0.0000, NaN, NaN

■ 90.4569, 8.8297,

0.0000, NaN, NaN

103.2467, 8.7279,
10.2929

■ 19.1183, 7.5470,
3.5725

■ 19.1183, 7.5470,
3.5725

■ 17.5100, 10.0309,
4.2403

■ 20.8728, 5.1143,
2.9527

■ 16.0719, 12.5177,
4.9446

■ 22.7503, 2.7592,
2.3822

■ 14.8330, 14.9167,
5.6624

■ 24.7334, 0.4873,
1.8592

■ 13.8213, 17.0941,
6.3549

■ 26.8075, -1.7037,
1.3794

■ 13.0542, 18.9034,
6.9655

■ 28.9608, -3.8208,
0.9378

■ 12.3507, 20.7612,
7.4846

■ 31.1839, -5.8728,
0.5293

■ 12.2536, 21.0309,
7.5601

■ 33.4688, -7.8683,
0.1496

■ 35.8092, -9.8158,
-0.2054

■ 38.1999, -11.7227,
-0.5393

Harmonies

Analogous

The Analogous color harmony consists of three colors that are next to each other on the color wheel.



19.1188, 7.9856, -0.4111



19.1183, 7.5470, 3.5725



19.1188, 4.6996, 6.2075

Triad

The Triadic color harmony groups three colors that are evenly spaced from another and form a triangle on the color wheel.



19.1188, 7.5461, 3.5728



19.1188, -7.0421, 5.5077



19.1188, -2.4690, -8.6329

Complementary

The Complementary color scheme is a pair of colors which are on the opposite of each other on the color wheel.



19.1183, 7.5470, 3.5725



24.7134, -8.0083, -0.4555

Split Complementary

Split-complementary colors differ from the complementary color scheme. The scheme consists of three colors, the original color and two neighbors of the complement color.



19.1188, -6.1395, -6.1516



19.1183, 7.5470, 3.5725



19.1188, -8.6182, 2.3868

Square

The Square scheme is like the rectangle color scheme, but the four colors are evenly spaced on the color wheel.



19.1188, 7.5461, 3.5728



19.1188, -3.8054, 7.1381



19.1188, -8.3033, -1.8935



19.1188, 1.9322, -8.1129

Rectangle

The Rectangle color scheme consists of four colors that form a rectangle on the color wheel.



19.1183, 7.5470, 3.5725



19.1188, 1.9510, 7.1342



19.1188, -8.3033, -1.8935



19.1188, -3.8221, -8.1040

Sweetspot

The Sweet Spot groups the original color and five complimentary colors.



19.1188, 7.5461, 3.5728



31.2129, 1.7397, 2.6711



19.7490, 10.9624, -7.6232



15.6149, 0.9393, 1.3563



65.8695, -3.5146, 3.5788



17.3419, -0.9253, 0.9422

Same Dimension

The Same Dimension uses a secret algorithm to generate beautiful new colors.



19.1188, 7.5461, 3.5728



22.9916, 12.7467, 5.4347



21.9689, 1.8667, 6.5934



13.0540, 0.2598, 0.9820



16.8300, 28.8675, 10.5207



40.9362, 70.1467, 26.1241

Inverse Universe

The Inverse Universe completely reimagines the original color for something new.



19.1188, 7.5461, 3.5728



22.9916, 12.7467, 5.4347



21.2810, -2.7113, -5.4799



13.0540, 0.2598, 0.9820



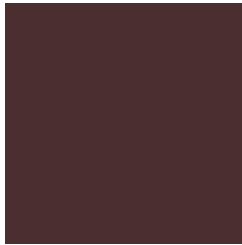
16.8300, 28.8675, 10.5207



40.9362, 70.1467, 26.1241

Previews

White Background



This preview shows how the HunterLab color 19.1183, 7.5470, 3.5725 looks on a white background.

Color Contrast Check

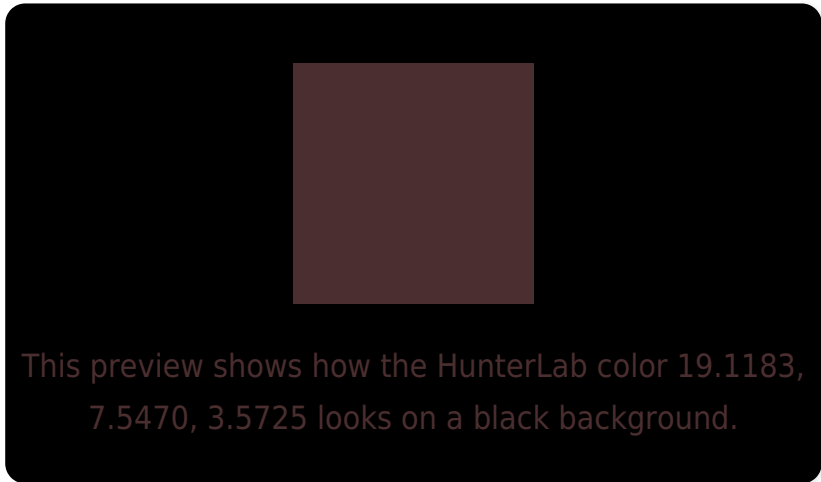
Large Text (above 18pt) WCAG AA ✓ Pass

Any Text WCAG AA ✓ Pass

Large Text (above 18pt) WCAG AAA ✓ Pass

Any Text WCAG AAA ✓ Pass

Black Background



Color Contrast Check

Large Text (above 18pt) WCAG AA × Fail

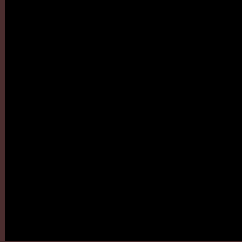
Any Text WCAG AA × Fail

Large Text (above 18pt) WCAG AAA × Fail

Any Text WCAG AAA × Fail

If you want to check with other color combinations, try the [Color Contrast Checker](#).

HunterLab 19.1183, 7.5470, 3.5725 Background



This preview shows how black text looks on a background with the HunterLab color 19.1183, 7.5470, 3.5725.

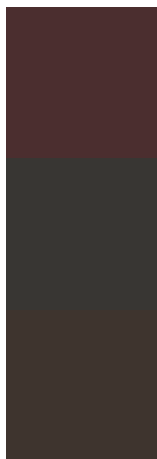


This preview shows how white text looks on a background with the HunterLab color 19.1183, 7.5470,

Color Blindness Simulation

Color vision deficiency is a very complex topic, and I could not describe the different causes any better than Wikipedia does, so if you want to learn more, you should check out their [article about color blindness](#).

Dichromacy



Original Color

19.1183, 7.5470, 3.5725

Protanopia

19.2824, -0.9035, 2.2356

Deuteranopia

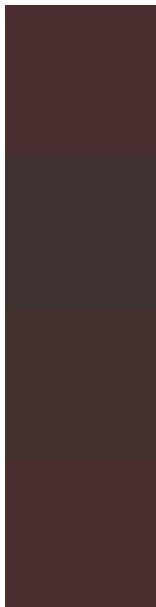
19.1765, 0.9538, 3.8415



Tritanopia

19.1614, 7.7638, 2.9521

Trichromacy



Original Color

19.1183, 7.5470, 3.5725

Protanomaly

19.1173, 2.1140, 2.4582

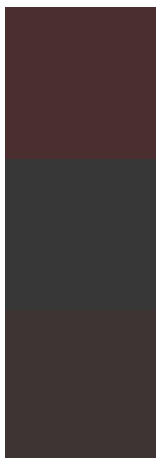
Deuteranomaly

19.1618, 3.2485, 3.8666

Tritanomaly

19.1396, 7.6543, 3.2654

Monochromacy



Original Color

19.1183, 7.5470, 3.5725

Achromatopsia

19.5459, -1.0429, 1.0620

Achromatomaly

19.3082, 1.6593, 1.9504

CSS Examples

Text

The CSS property to change the color of the text to HunterLab 19.1183, 7.5470, 3.5725 is called "color". The color property can be set on classes, ids or directly on the HTML element.

This example shows how text in the color `rgb(75, 46, 47)` looks like.

```
.text, #text, p{  
    color:rgb(75, 46, 47)  
}
```

If you want to add a text shadow in that color use the text-shadow property, you can generate a text shadow directly with our [CSS Text Shadow Generator](#).

Here you see how black text with a 4 pixel rgb(75, 46, 47) colored shadow looks like.

```
.shadow{ text-shadow: 4px 4px 2px rgb(75, 46, 47) }
```

Border

The CSS property to change the border of an element to HunterLab 19.1183, 7.5470, 3.5725 is called "border". The border property can be set on classes, ids or directly on the HTML element.

This example shows the color as border, it can be applied via the CSS property "border" or "border-color".

```
.border, #border, table{ border:4px solid rgb(75, 46, 47) }
```


If only the border color should be changed use the property `border-color`.

```
.border{ border-color:rgb(75, 46, 47) }
```

If you want to add a box shadow in that color use:

Here you see how a box with a 4 pixel `rgb(75, 46, 47)` colored shadow looks like.

```
.boxshadow{ -moz-box-shadow:4px 4px 4px  
4px rgb(75, 46, 47); -webkit-box-  
shadow:4px 4px 4px 4px rgb(75, 46, 47);  
box-shadow:4px 4px 4px 4px rgb(75, 46, 47)  
}
```

Background

The CSS property to change the background color of an element to HunterLab 19.1183, 7.5470, 3.5725 is called "background". The background property can be set on classes, ids or directly on the HTML element.

```
.background, #background, body{  
background: rgb(75, 46, 47) }
```

If only the background color should be changed can be used:

```
.background{ background-color: rgb(75, 46,  
47) }
```

This example shows the color as background, it is applied via the CSS property "background".

To optimize and compress your CSS code, you can use our [online CSS compressor and optimizer](#) based on csstidy. If you want to create a linear or radial gradient as background or border, check our [CSS Gradient Generator](#).

Hey! You found this booklet interesting? Support Converting Colors with the new Membership Option!

The pro membership hides all ads, plus gives you double the colors in the color bucket, and more awesome pro features!

[Learn more, Memberships starting at \\$2.50/m!](#)

**Follow me
on Twitter!**

@ConvertingColor