

Converting Colors

HunterLab(19.1847, 9.5319,
6.7662)

Have a look what the booklet for
HunterLab(19.1847, 9.5319, 6.7662)
contains.

HunterLab(19.1783, 9.3680, 6.8216)	3
<i>Conversions</i>	4
<i>Details</i>	6
<i>Harmonies</i>	12
<i>Previews</i>	24
<i>Color Blindness Simulation</i>	28
<i>CSS Examples</i>	31

Color

**HunterLab(19.1783, 9.3680,
6.8216)**

Conversions

Conversions Part 1

Format	Color
Hex	512C24
RGB	81, 44, 36
RGB Percent	32%, 17%, 14%
CMY	0.6824, 0.8274, 0.8588
CMYK	0.00, 0.46, 0.56, 0.68
HSL	11°, 38%, 23%
HSV	11°, 56%, 32%
XYZ	4.6125, 3.6781, 2.1359
YIQ	54.1510, 24.6200, 5.3560

Conversions

Conversions Part 2

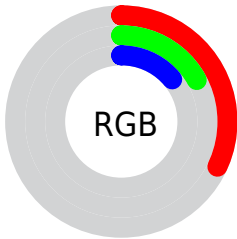
Format	Color
RYB	81, 46, 36
Decimal	5319716
CIELab	22.58, 16.09, 12.57
CIELCh	23, 20.423, 38.001
Yxy	3.6783, 0.4424, 0.3528
Android (android.graphics.Color)	4283509796 (0xFF512C24)
YUV	54.1510, -8.9484, 23.5466
Hunter-Lab	19.1783, 9.3680, 6.8216

Details

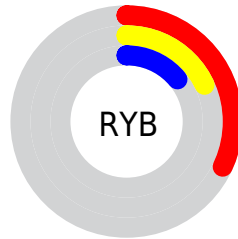
The HunterLab color **19.1783, 9.3680, 6.8216** is a dark color, and the websafe version is hex **663333**. A complement of this color would be **23.9457, -7.6509, -4.6534**, and the grayscale version is **19.2817, -1.0288, 1.0476**.

A 20% lighter version of the original color is **35.7938, 10.4543, 9.3443**, and **5.9777, 10.2369, 3.8626** is the 20% darker color. If you saturate the color by 10%, you get **17.8249, 11.6070, 7.5533**, and if you desaturate by 10%, it is **20.6644, 7.1914, 5.9938**.

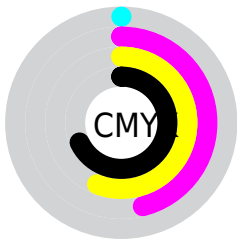
Distribution



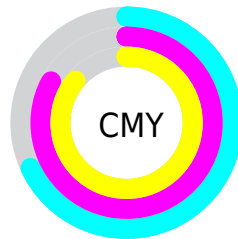
- Red (32%)
- Green (17%)
- Blue (14%)



- Red (32%)
- Yellow (18%)
- Blue (14%)



- Cyan (0%)
- Magenta (46%)
- Yellow (56%)
- Black (68%)



- Cyan (68%)
- Magenta (83%)
- Yellow (86%)

Brightness & Saturation Gradients

These gradients show how the HunterLab color 19.1783, 9.3680, 6.8216 changes by changing the brightness by 10 percent. The first figure shows a shift by +10% for each color and the second figure -10%.

Similar to the brightness gradients but the following saturation gradients show a change of the HunterLab color 19.1783, 9.3680, 6.8216 by changing the saturation by 10% instead.

■ 19.1783, 9.3680,
6.8216

■ 19.1783, 9.3680,
6.8216

■ 116.6978, 11.5203,
18.4579

■ 12.2281, 8.5868,
5.4708

■ 35.8851, 10.4827,
9.5733

■ 5.3422, 12.8415,
3.7395

■ 45.4558, 10.8665,
10.8759

0.0000, NaN, NaN

■ 55.7524, 11.1562,
12.1547

0.0000, NaN, NaN

■ 66.7269, 11.3634,
13.4200

0.0000, NaN, NaN

■ 78.3398, 11.4970,
14.6787

0.0000, NaN, NaN

■ 90.5577, 11.5639,

0.0000, NaN, NaN

15.9357

0.0000, NaN, NaN

103.3520, 11.5701,
17.1946

19.1783, 9.3680,
6.8216

19.1783, 9.3680,
6.8216

17.8249, 11.6070,
7.5533

20.6644, 7.1914,
5.9938

16.6212, 13.8657,
8.1569

22.2649, 5.1048,
5.0943

15.5865, 16.0703,
8.5988

23.9655, 3.1165,
4.1425

14.7292, 18.0841,
8.9765

25.7537, 1.2266,
3.1524

14.4027, 18.8649,
9.2051

27.6189, -0.5700,
2.1339

■ 29.5523, -2.2812,
1.0939

■ 31.5463, -3.9156,
0.0370

■ 33.5949, -5.4820,
-1.0334

■ 35.6927, -6.9885,
-2.1152

Harmonies

Analogous

The Analogous color harmony consists of three colors that are next to each other on the color wheel.



19.1788, 12.3505, 2.5645



19.1783, 9.3680, 6.8216



19.1788, 3.6765, 8.8937

Triad

The Triadic color harmony groups three colors that are evenly spaced from another and form a triangle on the color wheel.



19.1788, 9.3669, 6.8219



19.1788, -10.9227, 4.8436



19.1788, 0.6731, -14.0320

Complementary

The Complementary color scheme is a pair of colors which are on the opposite of each other on the color wheel.



19.1783, 9.3680, 6.8216



23.9457, -7.6509, -4.6534

Split Complementary

Split-complementary colors differ from the complementary color scheme. The scheme consists of three colors, the original color and two neighbors of the complement color.



19.1788, -5.3119, -12.8267



19.1783, 9.3680, 6.8216



19.1788, -11.5113, -0.6123

Square

The Square scheme is like the rectangle color scheme, but the four colors are evenly spaced on the color wheel.



19.1788, 9.3669, 6.8219



19.1788, -7.8616, 8.0319



19.1788, -9.5869, -7.3888



19.1788, 6.9292, -10.2930

Rectangle

The Rectangle color scheme consists of four colors that form a rectangle on the color wheel.



19.1783, 9.3680, 6.8216



19.1788, -0.6043, 9.3021



19.1788, -9.5869, -7.3888



19.1788, -1.4408, -14.2094

Sweetspot

The Sweet Spot groups the original color and five complimentary colors.



19.1788, 9.3669, 6.8219



33.1093, 2.0902, 4.3772



18.7051, 17.3037, -8.4275



16.7405, 1.1895, 2.2961



67.9972, -3.6282, 3.6944



19.0543, -1.0167, 1.0353

Same Dimension

The Same Dimension uses a secret algorithm to generate beautiful new colors.



19.1788, 9.3669, 6.8219



22.6366, 16.2453, 10.1690



24.0274, 0.0004, 10.6869



13.9648, -0.0047, 1.2714



18.5152, 25.4332, 11.8542



43.3225, 64.6745, 27.8273

Inverse Universe

The Inverse Universe completely reimagines the original color for something new.



23.9457, -7.6509, -4.6534



30.0498, -10.7784, -7.8026



18.2670, 1.2234, -13.9892



14.3856, -1.4628, 0.2679



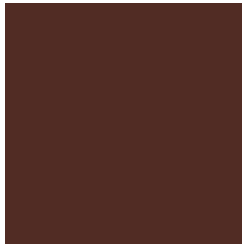
27.6761, -10.6951, -11.5050



65.5724, -24.4930, -29.0865

Previews

White Background



This preview shows how the HunterLab color 19.1783, 9.3680, 6.8216 looks on a white background.

Color Contrast Check

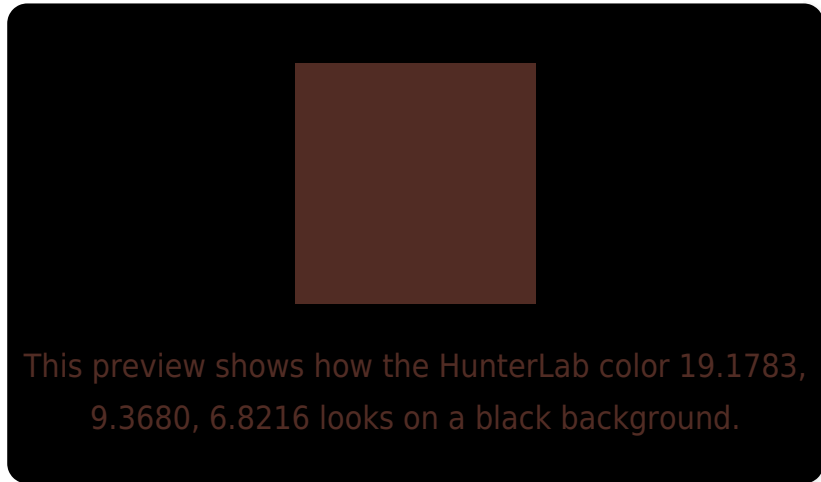
Large Text (above 18pt) WCAG AA ✓ Pass

Any Text WCAG AA ✓ Pass

Large Text (above 18pt) WCAG AAA ✓ Pass

Any Text WCAG AAA ✓ Pass

Black Background



Color Contrast Check

Large Text (above 18pt) WCAG AA × Fail

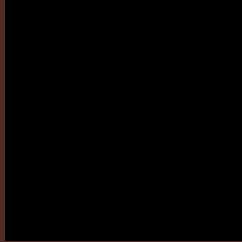
Any Text WCAG AA × Fail

Large Text (above 18pt) WCAG AAA × Fail

Any Text WCAG AAA × Fail

If you want to check with other color combinations, try the [Color Contrast Checker](#).

HunterLab 19.1783, 9.3680, 6.8216 Background



This preview shows how black text looks on a background with the HunterLab color 19.1783, 9.3680, 6.8216.

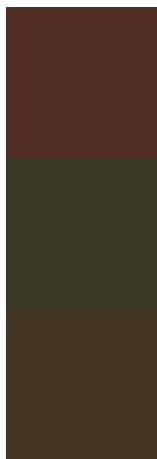


This preview shows how white text looks on a background with the HunterLab color 19.1783, 9.3680,

Color Blindness Simulation

Color vision deficiency is a very complex topic, and I could not describe the different causes any better than Wikipedia does, so if you want to learn more, you should check out their [article about color blindness](#).

Dichromacy



Original Color

19.1783, 9.3680, 6.8216

Protanopia

19.2122, -1.5944, 5.6153

Deuteranopia

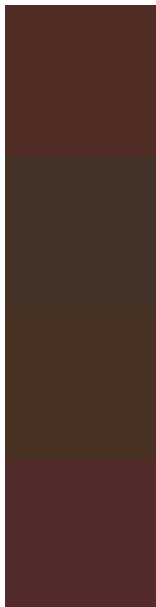
19.3125, 0.9880, 7.2715



Tritanopia

19.2843, 11.0220, 4.1289

Trichromacy



Original Color

19.1783, 9.3680, 6.8216

Protanomaly

18.9366, 2.2430, 5.6981

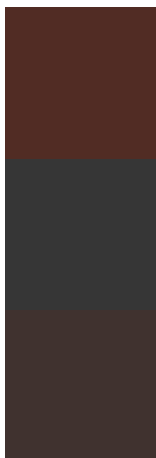
Deuteranomaly

19.1248, 3.8675, 6.9227

Tritanomaly

19.2061, 10.6419, 5.2589

Monochromacy



Original Color

19.1783, 9.3680, 6.8216

Achromatopsia

19.2066, -1.0248, 1.0435

Achromatomaly

18.9114, 2.4705, 3.2650

CSS Examples

Text

The CSS property to change the color of the text to HunterLab 19.1783, 9.3680, 6.8216 is called "color". The color property can be set on classes, ids or directly on the HTML element.

This example shows how text in the color `rgb(81, 44, 36)` looks like.

```
.text, #text, p{  
    color:rgb(81, 44, 36)  
}
```

If you want to add a text shadow in that color use the text-shadow property, you can generate a text shadow directly with our [CSS Text Shadow Generator](#).

Here you see how black text with a 4 pixel rgb(81, 44, 36) colored shadow looks like.

```
.shadow{ text-shadow: 4px 4px 2px rgb(81, 44, 36) }
```

Border

The CSS property to change the border of an element to HunterLab 19.1783, 9.3680, 6.8216 is called "border".

The border property can be set on classes, ids or directly on the HTML element.

This example shows the color as border, it can be applied via the CSS property "border" or "border-color".

```
.border, #border, table{ border:4px solid rgb(81, 44, 36) }
```


If only the border color should be changed use the property border-color.

```
.border{ border-color:rgb(81, 44, 36) }
```

If you want to add a box shadow in that color use:

Here you see how a box with a 4 pixel rgb(81, 44, 36) colored shadow looks like.

```
.boxshadow{ -moz-box-shadow:4px 4px 4px  
4px rgb(81, 44, 36); -webkit-box-  
shadow:4px 4px 4px 4px rgb(81, 44, 36);  
box-shadow:4px 4px 4px 4px rgb(81, 44, 36)  
}
```

Background

The CSS property to change the background color of an element to HunterLab 19.1783, 9.3680, 6.8216 is called "background". The background property can be set on classes, ids or directly on the HTML element.

```
.background, #background, body{  
background: rgb(81, 44, 36) }
```

If only the background color should be changed can be used:

```
.background{ background-color: rgb(81, 44,  
36) }
```

This example shows the color as background, it is applied via the CSS property "background".

To optimize and compress your CSS code, you can use our [online CSS compressor and optimizer](#) based on csstidy. If you want to create a linear or radial gradient as background or border, check our [CSS Gradient Generator](#).

Hey! You found this booklet interesting? Support Converting Colors with the new Membership Option!

The pro membership hides all ads, plus gives you double the colors in the color bucket, and more awesome pro features!

[Learn more, Memberships starting at \\$2.50/m!](#)

**Follow me
on Twitter!**

@ConvertingColor