

# Converting Colors

HunterLab(19.2349, 5.7819,  
3.3294)

Have a look what the booklet for  
HunterLab(19.2349, 5.7819, 3.3294)  
contains.

<b>HunterLab(19.2484, 5.8475, 3.3498)</b> .....	3
<i><b>Conversions</b></i> .....	4
<i><b>Details</b></i> .....	6
<i><b>Harmonies</b></i> .....	12
<i><b>Previews</b></i> .....	24
<i><b>Color Blindness Simulation</b></i> .....	28
<i><b>CSS Examples</b></i> .....	31

# Color

**HunterLab(19.2484, 5.8475,  
3.3498)**

# Conversions

## Conversions Part 1

Format	Color
Hex	483030
RGB	72, 48, 48
RGB Percent	28%, 19%, 19%
CMY	0.7176, 0.8118, 0.8118
CMYK	0.00, 0.33, 0.33, 0.72
HSL	0°, 20%, 24%
HSV	0°, 33%, 28%
XYZ	4.2629, 3.7050, 3.2868
YIQ	55.1760, 14.3040, 5.0880

# Conversions

## Conversions Part 2

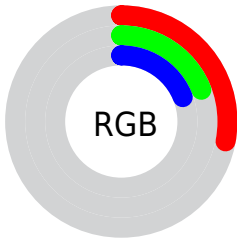
<b>Format</b>	<b>Color</b>
<b>R<sub>YB</sub></b>	72, 48, 48
Decimal	4730928
CIE Lab	22.67, 10.96, 4.40
CIE LCh	23, 11.811, 21.883
Yxy	3.7052, 0.3788, 0.3292
Android (android.graphics.Color)	4282921008 (0xFF483030)
YUV	55.1760, -3.5378, 14.7546
Hunter-Lab	19.2484, 5.8475, 3.3498

# Details

The HunterLab color **19.2484, 5.8475, 3.3498** is a dark color, and the websafe version is hex **333333**. A complement of this color would be **23.9390, -6.8041, -0.5524**, and the grayscale version is **19.6143, -1.0466, 1.0657**.

A 20% lighter version of the original color is **35.8866, 6.3779, 4.7291**, and **5.4564, 8.3218, 3.5079** is the 20% darker color. If you saturate the color by 10%, you get **17.6314, 8.1767, 4.0143**, and if you desaturate by 10%, it is **20.9929, 3.5885, 2.7191**.

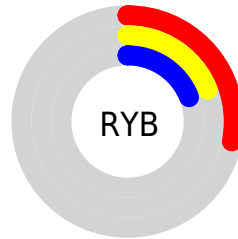
# Distribution



Red (28%)

Green (19%)

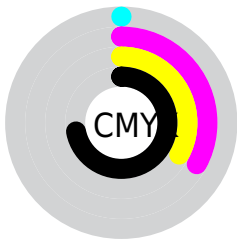
Blue (19%)



Red (28%)

Yellow (19%)

Blue (19%)

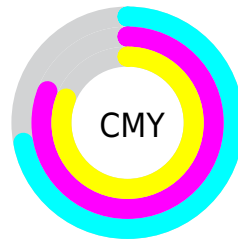


Cyan (0%)

Magenta (33%)

Yellow (33%)

Black (72%)



Cyan (72%)

Magenta (81%)

Yellow (81%)

# Brightness & Saturation Gradients

These gradients show how the HunterLab color 19.2484, 5.8475, 3.3498 changes by changing the brightness by 10 percent. The first figure shows a shift by +10% for each color and the second figure -10%.

Similar to the brightness gradients but the following saturation gradients show a change of the HunterLab color 19.2484, 5.8475, 3.3498 by changing the saturation by 10% instead.



■ 19.2484, 5.8475,  
3.3498

■ 19.2484, 5.8475,  
3.3498

■ 116.8256, 5.7446,  
10.7602

■ 12.2884, 5.3970,  
2.6051

■ 35.9714, 6.3623,  
4.8597

■ 5.4386, 8.4910,  
3.6512

■ 45.5492, 6.4733,  
5.6388

0.0000, NaN, NaN

0.0000, NaN, NaN

■ 55.8524, 6.5052,  
6.4380

0.0000, NaN, NaN

■ 66.8331, 6.4674,  
7.2586

0.0000, NaN, NaN

■ 78.4518, 6.3673,  
8.1010

0.0000, NaN, NaN

0.0000, NaN, NaN

■ 90.6752, 6.2104,

103.4748, 6.0016,  
9.8519

■ 19.2484, 5.8475,  
3.3498

■ 19.2484, 5.8475,  
3.3498

■ 17.6314, 8.1767,  
4.0143

■ 20.9929, 3.5885,  
2.7191

■ 16.1629, 10.5473,  
4.7029

■ 22.8450, 1.4135,  
2.1237

■ 14.8690, 12.8968,  
5.3969

■ 24.7899, -0.6786,  
1.5628

■ 13.7771, 15.1226,  
6.0640

■ 26.8152, -2.6936,  
1.0336

■ 12.9124, 17.0829,  
6.6585

■ 28.9109, -4.6398,  
0.5324

■ 12.2169, 18.8138,  
7.1884

■ 31.0689, -6.5261,  
0.0558

■ 11.7380, 20.0995,  
7.5848

■ 33.2826, -8.3610,  
-0.3995

■ 35.5464, -10.1524,  
-0.8366

■ 37.8558, -11.9069,  
-1.2581

# Harmonies

## Analogous

The Analogous color harmony consists of three colors that are next to each other on the color wheel.



19.2489, 6.3378, 0.0918



19.2484, 5.8475, 3.3498



19.2489, 3.4473, 5.5529

# Triad

The Triadic color harmony groups three colors that are evenly spaced from another and form a triangle on the color wheel.



19.2489, 5.8467, 3.3501



19.2489, -6.1910, 4.6947



19.2489, -1.9986, -6.7034

# Complementary

The Complementary color scheme is a pair of colors which are on the opposite of each other on the color wheel.



19.2484, 5.8475, 3.3498



23.9390, -6.8041, -0.5524

# Split Complementary

Split-complementary colors differ from the complementary color scheme. The scheme consists of three colors, the original color and two neighbors of the complement color.



19.2489, -5.1286, -4.9055



19.2484, 5.8475, 3.3498



19.2489, -7.4298, 1.9571

# Square

The Square scheme is like the rectangle color scheme, but the four colors are evenly spaced on the color wheel.



19.2489, 5.8467, 3.3501



19.2489, -3.5477, 6.2237



19.2489, -7.0557, -1.5796



19.2489, 1.6282, -6.1428



# Rectangle

The Rectangle color scheme consists of four colors that form a rectangle on the color wheel.



19.2484, 5.8475, 3.3498



19.2489, 1.1786, 6.3268



19.2489, -7.0557, -1.5796



19.2489, -3.1396, -6.3447

# Sweetspot

The Sweet Spot groups the original color and five complimentary colors.



19.2489, 5.8467, 3.3501



30.8812, 1.0448, 2.5805



19.8986, 9.1252, -5.8464



15.8511, 0.6427, 1.3602



65.8695, -3.5146, 3.5788



17.3419, -0.9253, 0.9422



# Same Dimension

The Same Dimension uses a secret algorithm to generate beautiful new colors.



19.2489, 5.8467, 3.3501



23.6174, 10.2521, 5.1424



21.9610, 0.7605, 5.9960



12.3075, 0.2117, 0.9598



16.3652, 28.0238, 10.5748



40.4018, 69.1874, 26.1067



# Inverse Universe

The Inverse Universe completely reimagines the original color for something new.



23.9390, -6.8041, -0.5524



31.2094, -10.3766, -1.2251



20.8038, -2.0475, -4.6893



12.9552, -1.5162, 0.4273



31.4920, -16.6943, -3.3241

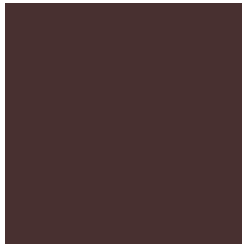


77.7471, -41.2144, -8.2071



# Previews

## White Background



This preview shows how the HunterLab color 19.2484, 5.8475, 3.3498 looks on a white background.

## Color Contrast Check

Large Text (above 18pt) WCAG AA ✓ Pass

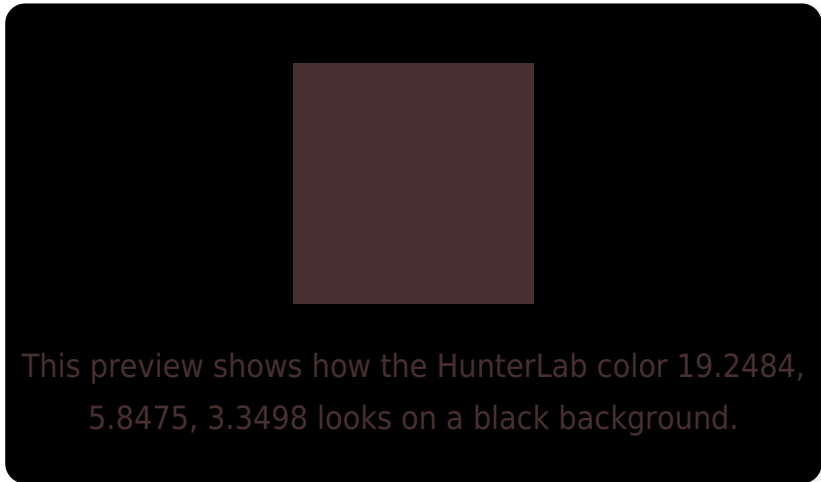
Any Text WCAG AA ✓ Pass

Large Text (above 18pt) WCAG AAA ✓ Pass

Any Text WCAG AAA ✓ Pass



# Black Background



## Color Contrast Check

Large Text (above 18pt) WCAG AA × Fail

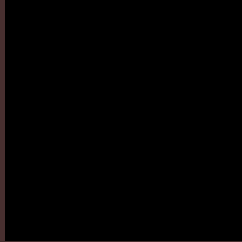
Any Text WCAG AA × Fail

Large Text (above 18pt) WCAG AAA × Fail

Any Text WCAG AAA × Fail

If you want to check with other color combinations, try the [Color Contrast Checker](#).

## HunterLab 19.2484, 5.8475, 3.3498 Background



This preview shows how black text looks on a background with the HunterLab color 19.2484, 5.8475, 3.3498.



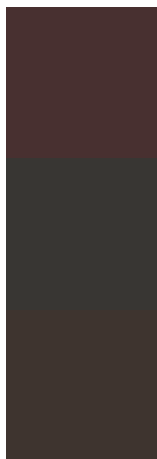
This preview shows how white text looks on a background with the HunterLab color 19.2484, 5.8475,



# Color Blindness Simulation

Color vision deficiency is a very complex topic, and I could not describe the different causes any better than Wikipedia does, so if you want to learn more, you should check out their [article about color blindness](#).

## Dichromacy



### Original Color

19.2484, 5.8475, 3.3498

### Protanopia

19.2824, -0.9035, 2.2356

### Deuteranopia

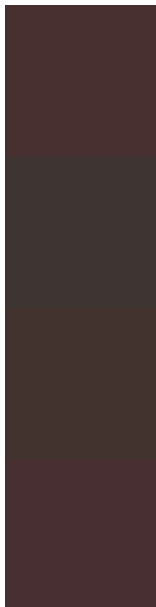
19.1973, 1.0655, 3.5421



## Tritanopia

19.3149, 6.1872, 2.3960

# Trichromacy



## Original Color

19.2484, 5.8475, 3.3498

## Protanomaly

19.2624, 1.4147, 2.6059

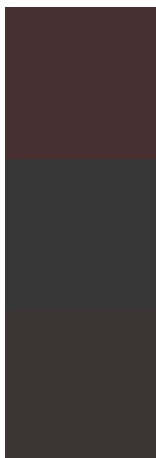
## Deuteranomaly

19.3162, 2.6402, 3.6940

## Tritanomaly

19.2923, 6.0717, 2.7202

# Monochromacy



## Original Color

19.2484, 5.8475, 3.3498

## Achromatopsia

19.5459, -1.0429, 1.0620

## Achromatomaly

19.2250, 1.3811, 1.8512

# CSS Examples

## Text

The CSS property to change the color of the text to HunterLab 19.2484, 5.8475, 3.3498 is called "color". The color property can be set on classes, ids or directly on the HTML element.

This example shows how text in the color `rgb(72, 48, 48)` looks like.

```
.text, #text, p{  
    color:rgb(72, 48, 48)  
}
```

If you want to add a text shadow in that color use the text-shadow property, you can generate a text shadow directly with our [CSS Text Shadow Generator](#).

Here you see how black text with a 4 pixel rgb(72, 48, 48) colored shadow looks like.

```
.shadow{ text-shadow: 4px 4px 2px rgb(72, 48, 48) }
```

## Border

The CSS property to change the border of an element to HunterLab 19.2484, 5.8475, 3.3498 is called "border".

The border property can be set on classes, ids or directly on the HTML element.

This example shows the color as border, it can be applied via the CSS property "border" or "border-color".

```
.border, #border, table{ border:4px solid rgb(72, 48, 48) }
```



If only the border color should be changed use the property `border-color`.

```
.border{ border-color:rgb(72, 48, 48) }
```

If you want to add a box shadow in that color use:

Here you see how a box with a 4 pixel `rgb(72, 48, 48)` colored shadow looks like.

```
.boxshadow{ -moz-box-shadow:4px 4px 4px  
4px rgb(72, 48, 48); -webkit-box-  
shadow:4px 4px 4px 4px rgb(72, 48, 48);  
box-shadow:4px 4px 4px 4px rgb(72, 48, 48)  
}
```

# Background

The CSS property to change the background color of an element to HunterLab 19.2484, 5.8475, 3.3498 is called "background". The background property can be set on classes, ids or directly on the HTML element.

```
.background, #background, body{  
background: rgb(72, 48, 48) }
```

If only the background color should be changed can be used:

```
.background{ background-color: rgb(72, 48,  
48) }
```

This example shows the color as background, it is applied via the CSS property "background".

To optimize and compress your CSS code, you can use our [online CSS compressor and optimizer](#) based on csstidy. If you want to create a linear or radial gradient as background or border, check our [CSS Gradient Generator](#).

Hey! You found this booklet interesting? Support Converting Colors with the new Membership Option!

The pro membership hides all ads, plus gives you double the colors in the color bucket, and more awesome pro features!

**[Learn more, Memberships starting at \\$2.50/m!](#)**

**Follow me  
on Twitter!**

@ConvertingColor