

Converting Colors

HunterLab(19.3234, 10.7405,
7.2161)

Have a look what the booklet for
HunterLab(19.3234, 10.7405,
7.2161) contains.

HunterLab(19.3234, 10.7405, 7.2161)	3
<i>Conversions</i>	4
<i>Details</i>	6
<i>Harmonies</i>	12
<i>Previews</i>	24
<i>Color Blindness Simulation</i>	28
<i>CSS Examples</i>	31

Color

**HunterLab(19.3234, 10.7405,
7.2161)**

Conversions

Conversions Part 1

Format	Color
Hex	542B23
RGB	84, 43, 35
RGB Percent	33%, 17%, 14%
CMY	0.6706, 0.8314, 0.8627
CMYK	0.00, 0.49, 0.58, 0.67
HSL	10°, 41%, 23%
HSV	10°, 58%, 33%
XYZ	4.8234, 3.7339, 2.0566
YIQ	54.3470, 27.0040, 6.2040

Conversions

Conversions Part 2

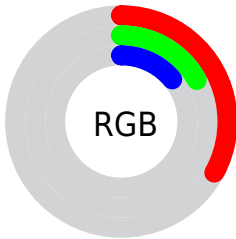
Format	Color
RYB	84, 45, 35
Decimal	5516067
CIELab	22.77, 17.99, 13.58
CIElCh	23, 22.547, 37.051
Yxy	3.7341, 0.4544, 0.3518
Android (android.graphics.Color)	4283706147 (0xFF542B23)
YUV	54.3470, -9.5381, 26.0057
Hunter-Lab	19.3234, 10.7405, 7.2161

Details

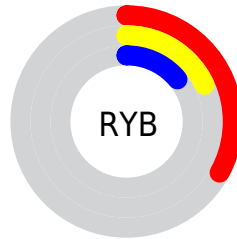
The HunterLab color **19.3234, 10.7405, 7.2161** is a dark color, and the websafe version is hex **663333**. A complement of this color would be **24.8314, -8.3920, -4.8728**, and the grayscale version is **19.3496, -1.0324, 1.0513**.

A 20% lighter version of the original color is **35.9771, 12.1422, 10.1911**, and **6.4193, 10.9932, 4.1480** is the 20% darker color. If you saturate the color by 10%, you get **17.9509, 13.1294, 7.9458**, and if you desaturate by 10%, it is **20.8472, 8.3970, 6.3828**.

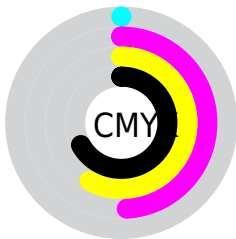
Distribution



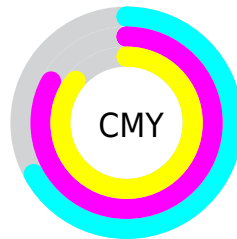
- Red (33%)
- Green (17%)
- Blue (14%)



- Red (33%)
- Yellow (18%)
- Blue (14%)



- Cyan (0%)
- Magenta (49%)
- Yellow (58%)
- Black (67%)



- Cyan (67%)
- Magenta (83%)
- Yellow (86%)

Brightness & Saturation Gradients

These gradients show how the HunterLab color 19.3234, 10.7405, 7.2161 changes by changing the brightness by 10 percent. The first figure shows a shift by +10% for each color and the second figure -10%.

Similar to the brightness gradients but the following saturation gradients show a change of the HunterLab color 19.3234, 10.7405, 7.2161 by changing the saturation by 10% instead.

■ 19.3234, 10.7405,
7.2161

■ 19.3234, 10.7405,
7.2161

■ 116.9625, 13.6853,
19.3961

■ 12.3530, 9.8508,
5.8163

■ 36.0638, 12.0605,
10.1275

■ 5.5399, 13.8581,
3.8779

■ 45.6492, 12.5396,
11.4977

0.0000, NaN, NaN

0.0000, NaN, NaN

■ 55.9594, 12.9202,
12.8383

0.0000, NaN, NaN

■ 66.9467, 13.2141,
14.1609

0.0000, NaN, NaN

■ 78.5716, 13.4308,
15.4732

0.0000, NaN, NaN

0.0000, NaN, NaN

■ 90.8009, 13.5777,

16.7807

0.0000, NaN, NaN

103.6062, 13.6608,
18.0873

19.3234, 10.7405,
7.2161

19.3234, 10.7405,
7.2161

17.9509, 13.1294,
7.9458

20.8472, 8.3970,
6.3828

16.7489, 15.5043,
8.5357

22.5013, 6.1383,
5.4741

15.7385, 17.7698,
8.9489

24.2690, 3.9795,
4.5122

14.9213, 19.7425,
9.3803

26.1356, 1.9245,
3.5129

14.8033, 20.0289,
9.4724

28.0889, -0.0306,
2.4872

■ 30.1184, -1.8932,
1.4425

■ 32.2155, -3.6724,
0.3836

■ 34.3731, -5.3775,
-0.6863

■ 36.5851, -7.0176,
-1.7649

Harmonies

Analogous

The Analogous color harmony consists of three colors that are next to each other on the color wheel.



19.3239, 13.9787, 2.5380



19.3234, 10.7405, 7.2161



19.3239, 4.4187, 9.4391

Triad

The Triadic color harmony groups three colors that are evenly spaced from another and form a triangle on the color wheel.



19.3239, 10.7393, 7.2164



19.3239, -11.7959, 5.3547



19.3239, 0.6238, -16.1365

Complementary

The Complementary color scheme is a pair of colors which are on the opposite of each other on the color wheel.



19.3234, 10.7405, 7.2161



24.8314, -8.3920, -4.8728

Split Complementary

Split-complementary colors differ from the complementary color scheme. The scheme consists of three colors, the original color and two neighbors of the complement color.



19.3239, -5.9386, -14.5556



19.3234, 10.7405, 7.2161



19.3239, -12.5165, -0.5626

Square

The Square scheme is like the rectangle color scheme, but the four colors are evenly spaced on the color wheel.



19.3239, 10.7393, 7.2164



19.3239, -8.3948, 8.6575



19.3239, -10.5230, -8.2038



19.3239, 7.6304, -11.9775

Rectangle

The Rectangle color scheme consists of four colors that form a rectangle on the color wheel.



19.3234, 10.7405, 7.2161



19.3239, -0.3446, 9.8884



19.3239, -10.5230, -8.2038



19.3239, -1.7101, -16.2770

Sweetspot

The Sweet Spot groups the original color and five complimentary colors.



19.3239, 10.7393, 7.2164



34.7319, 2.3468, 4.5432



19.0205, 19.1218, -9.6297



17.4422, 1.3330, 2.3732



69.0652, -3.6851, 3.7524



19.9203, -1.0629, 1.0823

Same Dimension

The Same Dimension uses a secret algorithm to generate beautiful new colors.



19.3239, 10.7393, 7.2164



23.0469, 18.6458, 10.8461



24.5004, 0.5305, 11.2582



13.9515, 0.0182, 1.2566



18.3829, 25.8440, 11.7799



43.0626, 65.5119, 27.6818

Inverse Universe

The Inverse Universe completely reimagines the original color for something new.



24.8314, -8.3920, -4.8728



31.6392, -11.9013, -8.1697



18.6195, 1.2389, -15.2135



14.3995, -1.4852, 0.2843



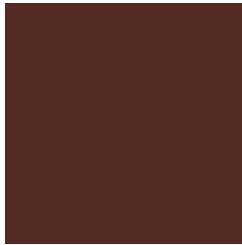
28.1146, -11.2745, -10.8024



66.6938, -25.9881, -27.2605

Previews

White Background



This preview shows how the HunterLab color 19.3234, 10.7405, 7.2161 looks on a white background.

Color Contrast Check

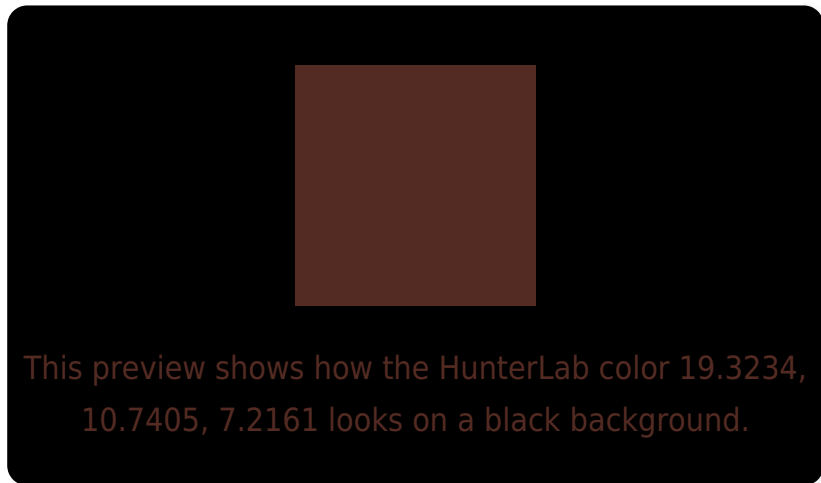
Large Text (above 18pt) WCAG AA ✓ Pass

Any Text WCAG AA ✓ Pass

Large Text (above 18pt) WCAG AAA ✓ Pass

Any Text WCAG AAA ✓ Pass

Black Background



Color Contrast Check

Large Text (above 18pt) WCAG AA × Fail

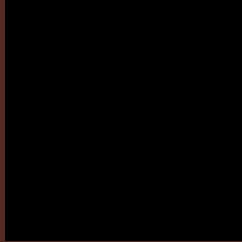
Any Text WCAG AA × Fail

Large Text (above 18pt) WCAG AAA × Fail

Any Text WCAG AAA × Fail

If you want to check with other color combinations, try the [Color Contrast Checker](#).

HunterLab 19.3234, 10.7405, 7.2161 Background



This preview shows how black text looks on a background with the HunterLab color 19.3234, 10.7405, 7.2161.

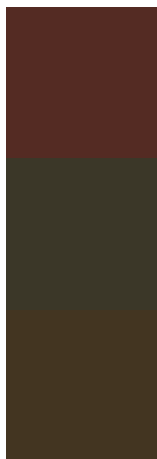


This preview shows how white text looks on a background with the HunterLab color 19.3234, 10.7405, 7.2161.

Color Blindness Simulation

Color vision deficiency is a very complex topic, and I could not describe the different causes any better than Wikipedia does, so if you want to learn more, you should check out their [article about color blindness](#).

Dichromacy



Original Color

19.3234, 10.7405, 7.2161

Protanopia

19.5330, -1.7157, 5.9127

Deuteranopia

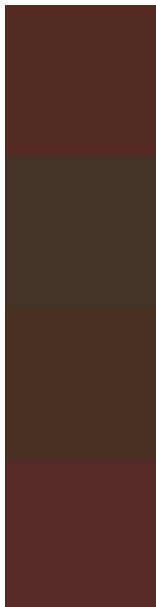
19.6196, 0.8054, 7.7555



Tritanopia

19.4337, 12.3567, 4.6171

Trichromacy



Original Color

19.3234, 10.7405, 7.2161

Protanomaly

19.3301, 2.3483, 6.3278

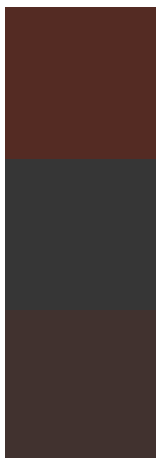
Deuteranomaly

19.3095, 4.4300, 7.3292

Tritanomaly

19.3580, 11.9935, 5.7130

Monochromacy



Original Color

19.3234, 10.7405, 7.2161

Achromatopsia

19.2066, -1.0248, 1.0435

Achromatomaly

19.0007, 2.7638, 3.3647

CSS Examples

Text

The CSS property to change the color of the text to HunterLab 19.3234, 10.7405, 7.2161 is called "color". The color property can be set on classes, ids or directly on the HTML element.

This example shows how text in the color rgb(84, 43, 35) looks like.

```
.text, #text, p{  
    color:rgb(84, 43, 35)  
}
```

If you want to add a text shadow in that color use the text-shadow property, you can generate a text shadow directly with our [CSS Text Shadow Generator](#).

Here you see how black text with a 4 pixel rgb(84, 43, 35) colored shadow looks like.

```
.shadow{ text-shadow: 4px 4px 2px rgb(84, 43, 35) }
```

Border

The CSS property to change the border of an element to HunterLab 19.3234, 10.7405, 7.2161 is called "border". The border property can be set on classes, ids or directly on the HTML element.

This example shows the color as border, it can be applied via the CSS property "border" or "border-color".

```
.border, #border, table{ border:4px solid rgb(84, 43, 35) }
```


If only the border color should be changed use the property border-color.

```
.border{ border-color:rgb(84, 43, 35) }
```

If you want to add a box shadow in that color use:

Here you see how a box with a 4 pixel rgb(84, 43, 35) colored shadow looks like.

```
.boxshadow{ -moz-box-shadow:4px 4px 4px  
4px rgb(84, 43, 35); -webkit-box-  
shadow:4px 4px 4px 4px rgb(84, 43, 35);  
box-shadow:4px 4px 4px 4px rgb(84, 43, 35)  
}
```

Background

The CSS property to change the background color of an element to HunterLab 19.3234, 10.7405, 7.2161 is called "background". The background property can be set on classes, ids or directly on the HTML element.

```
.background, #background, body{  
background: rgb(84, 43, 35) }
```

If only the background color should be changed can be used:

```
.background{ background-color: rgb(84, 43,  
35) }
```

This example shows the color as background, it is applied via the CSS property "background".

To optimize and compress your CSS code, you can use our [online CSS compressor and optimizer](#) based on csstidy. If you want to create a linear or radial gradient as background or border, check our [CSS Gradient Generator](#).

Hey! You found this booklet interesting? Support Converting Colors with the new Membership Option!

The pro membership hides all ads, plus gives you double the colors in the color bucket, and more awesome pro features!

[Learn more, Memberships starting at \\$2.50/m!](#)

**Follow me
on Twitter!**

@ConvertingColor