

Converting Colors

HunterLab(19.3256, 0.4356,
6.9959)

Have a look what the booklet for
HunterLab(19.3256, 0.4356, 6.9959)
contains.

HunterLab(19.4714, 0.3613, 7.1627)	3
<i>Conversions</i>	4
<i>Details</i>	6
<i>Harmonies</i>	12
<i>Previews</i>	24
<i>Color Blindness Simulation</i>	28
<i>CSS Examples</i>	31

Color

**HunterLab(19.4714, 0.3613,
7.1627)**

Conversions

Conversions Part 1

Format	Color
Hex	413523
RGB	65, 53, 35
RGB Percent	25%, 21%, 14%
CMY	0.7451, 0.7921, 0.8627
CMYK	0.00, 0.18, 0.46, 0.75
HSL	36°, 30%, 20%
HSV	36°, 46%, 25%
XYZ	3.7564, 3.7914, 2.1239
YIQ	54.5360, 12.9300, -3.0540

Conversions

Conversions Part 2

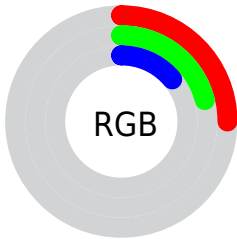
Format	Color
R_{YB}	55, 65, 35
Decimal	4273443
CIE Lab	22.97, 2.34, 13.35
CIE LCh	23, 13.555, 80.055
Yxy	3.7915, 0.3884, 0.3920
Android (android.graphics.Color)	4282463523 (0xFF413523)
YUV	54.5360, -9.6312, 9.1769
Hunter-Lab	19.4714, 0.3613, 7.1627

Details

The HunterLab color **19.4714, 0.3613, 7.1627** is a dark color, and the websafe version is hex **333333**. A complement of this color would be **16.6490, -0.5769, -7.5605**, and the grayscale version is **19.4172, -1.0361, 1.0550**.

A 20% lighter version of the original color is **36.1667, 0.1256, 9.8462**, and **5.8660, 1.4858, 3.6406** is the 20% darker color. If you saturate the color by 10%, you get **18.7772, 0.9201, 8.0176**, and if you desaturate by 10%, it is **20.1923, -0.1186, 6.1452**.

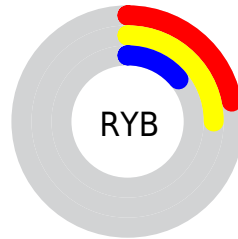
Distribution



Red (25%)

Green (21%)

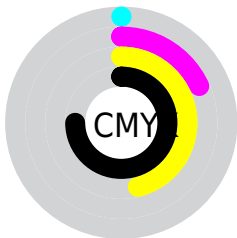
Blue (14%)



Red (22%)

Yellow (25%)

Blue (14%)

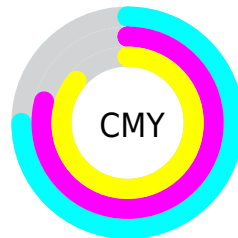


Cyan (0%)

Magenta (18%)

Yellow (46%)

Black (75%)



Cyan (75%)

Magenta (79%)

Yellow (86%)

Brightness & Saturation Gradients

These gradients show how the HunterLab color 19.4714, 0.3613, 7.1627 changes by changing the brightness by 10 percent. The first figure shows a shift by +10% for each color and the second figure -10%.

Similar to the brightness gradients but the following saturation gradients show a change of the HunterLab color 19.4714, 0.3613, 7.1627 by changing the saturation by 10% instead.

■ 19.4714, 0.3613,
7.1627

■ 19.4714, 0.3613,
7.1627

■ 117.2319, -3.7381,
19.2111

■ 12.4806, 0.5468,
5.7435

■ 36.2459, -0.2211,
10.0333

■ 5.7340, 1.4728,
4.0138

■ 45.8461, -0.5967,
11.3870

0.0000, NaN, NaN

0.0000, NaN, NaN

■ 56.1702, -1.0203,
12.7127

0.0000, NaN, NaN

■ 67.1704, -1.4879,
14.0217

0.0000, NaN, NaN

■ 78.8076, -1.9959,
15.3214

0.0000, NaN, NaN

0.0000, NaN, NaN

■ 91.0485, -2.5418,

16.6171

0.0000, NaN, NaN

103.8649, -3.1231,
17.9127

19.4714, 0.3613,
7.1627

19.4714, 0.3613,
7.1627

18.7772, 0.9201,
8.0176

20.1923, -0.1186,
6.1452

18.1095, 1.5618,
8.7011

20.9371, -0.5201,
4.9735

17.4701, 2.2861,
9.2070

21.7051, -0.8470,
3.6572

16.8600, 3.0908,
9.5342

22.4950, -1.1030,
2.2056

16.2700, 3.9205,
9.8325

23.3056, -1.2916,
0.6278

■ 16.0471, 4.2380,
9.9623

■ 24.1358, -1.4168,
-1.0673

■ 24.9845, -1.4822,
-2.8717

■ 25.8508, -1.4914,
-4.7776

■ 26.7338, -1.4480,
-6.7779

Harmonies

Analogous

The Analogous color harmony consists of three colors that are next to each other on the color wheel.



19.4719, 4.3654, 6.0368



19.4714, 0.3613, 7.1627



19.4719, -3.7072, 6.9376

Triad

The Triadic color harmony groups three colors that are evenly spaced from another and form a triangle on the color wheel.



19.4719, 0.3606, 7.1629



19.4719, -7.9974, -1.7335



19.4719, 5.4784, -4.4847

Complementary

The Complementary color scheme is a pair of colors which are on the opposite of each other on the color wheel.



19.4714, 0.3613, 7.1627



16.6490, -0.5769, -7.5605

Split Complementary

Split-complementary colors differ from the complementary color scheme. The scheme consists of three colors, the original color and two neighbors of the complement color.



19.4719, 1.7790, -7.5263



19.4714, 0.3613, 7.1627



19.4719, -5.9134, -5.7212

Square

The Square scheme is like the rectangle color scheme, but the four colors are evenly spaced on the color wheel.



19.4719, 0.3606, 7.1629



19.4719, -8.3077, 2.3286



19.4719, -2.4021, -8.0211



19.4719, 7.4799, -0.3003

Rectangle

The Rectangle color scheme consists of four colors that form a rectangle on the color wheel.



19.4714, 0.3613, 7.1627



19.4719, -5.9238, 6.0302



19.4719, -2.4021, -8.0211



19.4719, 4.3783, -5.7087

Sweetspot

The Sweet Spot groups the original color and five complimentary colors.



19.4719, 0.3606, 7.1629



28.3194, -1.1568, 4.4617



15.9095, 9.1170, -0.0594



14.8098, -0.5874, 2.4398



63.7533, -3.4017, 3.4638



15.6573, -0.8354, 0.8507

Same Dimension

The Same Dimension uses a secret algorithm to generate beautiful new colors.



19.4719, 0.3606, 7.1629



24.2596, 1.2850, 10.5169



22.1947, -5.2211, 9.3370



12.0095, -0.5643, 1.3808



23.6151, 7.3482, 14.6802



57.5697, 21.6653, 35.8535

Inverse Universe

The Inverse Universe completely reimagines the original color for something new.



16.6490, -0.5769, -7.5605



19.7917, -0.0647, -13.0245



14.1273, 5.0266, -12.1951



11.7157, -0.6740, -0.1301



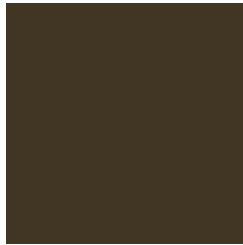
15.1530, 7.2959, -34.6897



35.5994, 23.6617, -95.5749

Previews

White Background



This preview shows how the HunterLab color 19.4714, 0.3613, 7.1627 looks on a white background.

Color Contrast Check

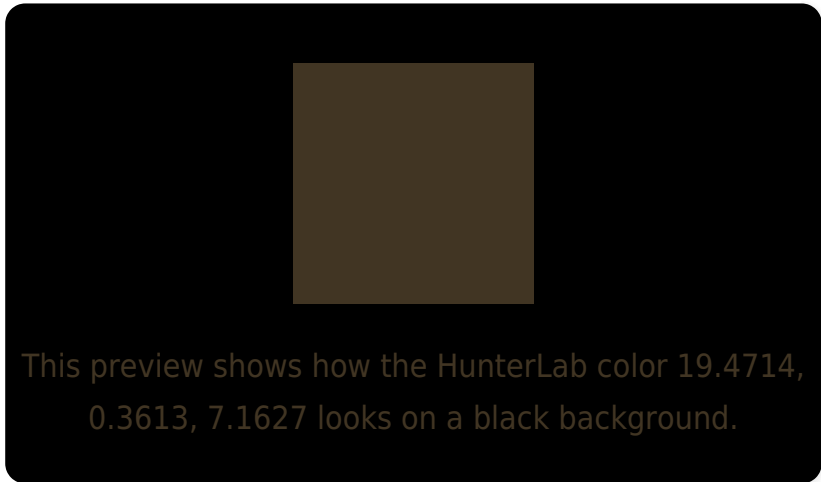
Large Text (above 18pt) WCAG AA ✓ Pass

Any Text WCAG AA ✓ Pass

Large Text (above 18pt) WCAG AAA ✓ Pass

Any Text WCAG AAA ✓ Pass

Black Background



Color Contrast Check

Large Text (above 18pt) WCAG AA × Fail

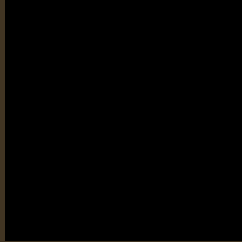
Any Text WCAG AA × Fail

Large Text (above 18pt) WCAG AAA × Fail

Any Text WCAG AAA × Fail

If you want to check with other color combinations, try the [Color Contrast Checker](#).

HunterLab 19.4714, 0.3613, 7.1627 Background



This preview shows how black text looks on a background with the HunterLab color 19.4714, 0.3613, 7.1627.

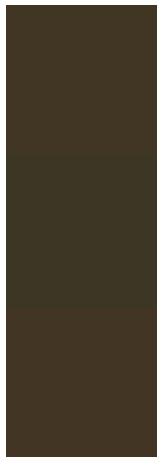


This preview shows how white text looks on a background with the HunterLab color 19.4714, 0.3613,

Color Blindness Simulation

Color vision deficiency is a very complex topic, and I could not describe the different causes any better than Wikipedia does, so if you want to learn more, you should check out their [article about color blindness](#).

Dichromacy



Original Color

19.4714, 0.3613, 7.1627

Protanopia

19.5459, -1.8027, 6.9496

Deuteranopia

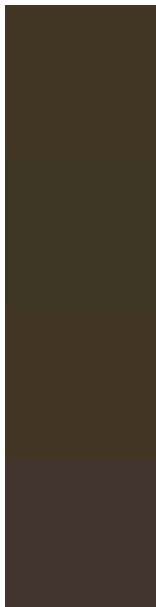
19.5597, 0.6612, 7.2442



Tritanopia

19.5635, 3.7608, 1.5437

Trichromacy



Original Color

19.4714, 0.3613, 7.1627

Protanomaly

19.4675, -0.8373, 6.8978

Deuteranomaly

19.5597, 0.6612, 7.2442

Tritanomaly

19.5435, 2.2219, 3.9228

Monochromacy



Original Color

19.4714, 0.3613, 7.1627

Achromatopsia

19.5459, -1.0429, 1.0620

Achromatomaly

19.4462, -0.4690, 3.4487

CSS Examples

Text

The CSS property to change the color of the text to HunterLab 19.4714, 0.3613, 7.1627 is called "color". The color property can be set on classes, ids or directly on the HTML element.

This example shows how text in the color `rgb(65, 53, 35)` looks like.

```
.text, #text, p{  
    color:rgb(65, 53, 35)  
}
```

If you want to add a text shadow in that color use the text-shadow property, you can generate a text shadow directly with our [CSS Text Shadow Generator](#).

Here you see how black text with a 4 pixel rgb(65, 53, 35) colored shadow looks like.

```
.shadow{ text-shadow: 4px 4px 2px rgb(65, 53, 35) }
```

Border

The CSS property to change the border of an element to HunterLab 19.4714, 0.3613, 7.1627 is called "border". The border property can be set on classes, ids or directly on the HTML element.

This example shows the color as border, it can be applied via the CSS property "border" or "border-color".

```
.border, #border, table{ border:4px solid rgb(65, 53, 35) }
```


If only the border color should be changed use the property `border-color`.

```
.border{ border-color:rgb(65, 53, 35) }
```

If you want to add a box shadow in that color use:

Here you see how a box with a 4 pixel `rgb(65, 53, 35)` colored shadow looks like.

```
.boxshadow{ -moz-box-shadow:4px 4px 4px  
4px rgb(65, 53, 35); -webkit-box-  
shadow:4px 4px 4px 4px rgb(65, 53, 35);  
box-shadow:4px 4px 4px 4px rgb(65, 53, 35)  
}
```

Background

The CSS property to change the background color of an element to HunterLab 19.4714, 0.3613, 7.1627 is called "background". The background property can be set on classes, ids or directly on the HTML element.

```
.background, #background, body{  
background: rgb(65, 53, 35) }
```

If only the background color should be changed can be used:

```
.background{ background-color: rgb(65, 53,  
35) }
```

This example shows the color as background, it is applied via the CSS property "background".

To optimize and compress your CSS code, you can use our [online CSS compressor and optimizer](#) based on csstidy. If you want to create a linear or radial gradient as background or border, check our [CSS Gradient Generator](#).

Hey! You found this booklet interesting? Support Converting Colors with the new Membership Option!

The pro membership hides all ads, plus gives you double the colors in the color bucket, and more awesome pro features!

[Learn more, Memberships starting at \\$2.50/m!](#)

**Follow me
on Twitter!**

@ConvertingColor