

Converting Colors

HunterLab(19.3557, 0.7737,
5.3911)

Have a look what the booklet for
HunterLab(19.3557, 0.7737, 5.3911)
contains.

HunterLab(19.4841, 0.6032, 5.6329)	3
<i>Conversions</i>	4
<i>Details</i>	6
<i>Harmonies</i>	12
<i>Previews</i>	24
<i>Color Blindness Simulation</i>	28
<i>CSS Examples</i>	31

Color

**HunterLab(19.4841, 0.6032,
5.6329)**

Conversions

Conversions Part 1

Format	Color
Hex	403529
RGB	64, 53, 41
RGB Percent	25%, 21%, 16%
CMY	0.7490, 0.7921, 0.8392
CMYK	0.00, 0.17, 0.36, 0.75
HSL	31°, 22%, 21%
HSV	31°, 36%, 25%
XYZ	3.7877, 3.7963, 2.6310
YIQ	54.9210, 10.4080, -1.4000

Conversions

Conversions Part 2

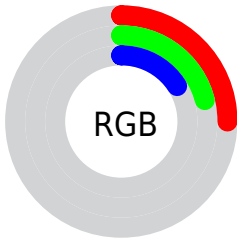
Format	Color
RYB	62, 64, 41
Decimal	4207913
CIELab	22.99, 2.74, 9.40
CIElCh	23, 9.789, 73.748
Yxy	3.7965, 0.3708, 0.3716
Android (android.graphics.Color)	4282397993 (0xFF403529)
YUV	54.9210, -6.8631, 7.9623
Hunter-Lab	19.4841, 0.6032, 5.6329

Details

The HunterLab color **19.4841, 0.6032, 5.6329** is a dark color, and the websafe version is hex **333333**. A complement of this color would be **18.1590, -1.6218, -4.6761**, and the grayscale version is **19.5396, -1.0426, 1.0616**.

A 20% lighter version of the original color is **36.1114, 0.1929, 7.7999**, and **5.7714, 2.1504, 3.5940** is the 20% darker color. If you saturate the color by 10%, you get **18.6687, 1.2725, 6.5740**, and if you desaturate by 10%, it is **20.3295, 0.0082, 4.5596**.

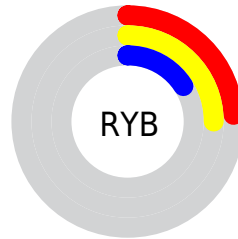
Distribution



Red (25%)

Green (21%)

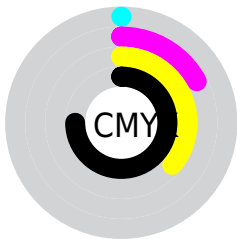
Blue (16%)



Red (24%)

Yellow (25%)

Blue (16%)

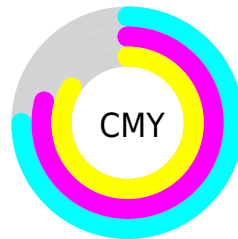


Cyan (0%)

Magenta (17%)

Yellow (36%)

Black (75%)



Cyan (75%)

Magenta (79%)

Yellow (84%)

Brightness & Saturation Gradients

These gradients show how the HunterLab color 19.4841, 0.6032, 5.6329 changes by changing the brightness by 10 percent. The first figure shows a shift by +10% for each color and the second figure -10%.

Similar to the brightness gradients but the following saturation gradients show a change of the HunterLab color 19.4841, 0.6032, 5.6329 by changing the saturation by 10% instead.

■ 19.4841, 0.6032,
5.6329

■ 19.4841, 0.6032,
5.6329

■ 117.2550, -3.3075,
15.5789

■ 12.4915, 0.7576,
4.4324

■ 36.2615, 0.0733,
7.8821

■ 5.7503, 1.7688,
4.0252

■ 45.8630, -0.2791,
8.9745

0.0000, NaN, NaN

0.0000, NaN, NaN

■ 56.1882, -0.6813,
10.0616

0.0000, NaN, NaN

■ 67.1896, -1.1287,
11.1497

0.0000, NaN, NaN

■ 78.8278, -1.6176,
12.2429

0.0000, NaN, NaN

0.0000, NaN, NaN

■ 91.0698, -2.1453,

13.3443

0.0000, NaN, NaN

103.8871, -2.7092,
14.4558

19.4841, 0.6032,
5.6329

19.4841, 0.6032,
5.6329

18.6687, 1.2725,
6.5740

20.3295, 0.0082,
4.5596

17.8839, 2.0214,
7.3713

21.2015, -0.5142,
3.3639

17.1324, 2.8511,
8.0147

22.0988, -0.9687,
2.0560

16.4164, 3.7622,
8.4947

23.0198, -1.3596,
0.6451

15.7379, 4.7520,
8.8071

23.9628, -1.6912,
-0.8601

■ 15.0885, 5.7623,
9.1049

■ 24.9266, -1.9675,
-2.4519

■ 14.8317, 6.1691,
9.2473

■ 25.9098, -2.1924,
-4.1233

■ 26.9113, -2.3697,
-5.8679

■ 27.9300, -2.5028,
-7.6801

Harmonies

Analogous

The Analogous color harmony consists of three colors that are next to each other on the color wheel.



19.4845, 3.3105, 4.4908



19.4841, 0.6032, 5.6329



19.4845, -2.3947, 5.6791

Triad

The Triadic color harmony groups three colors that are evenly spaced from another and form a triangle on the color wheel.



19.4845, 0.6025, 5.6332



19.4845, -6.3405, -0.2911



19.4845, 3.1170, -3.3414

Complementary

The Complementary color scheme is a pair of colors which are on the opposite of each other on the color wheel.



19.4841, 0.6032, 5.6329



18.1590, -1.6218, -4.6761

Split Complementary

Split-complementary colors differ from the complementary color scheme. The scheme consists of three colors, the original color and two neighbors of the complement color.



19.4845, 0.3513, -5.0680



19.4841, 0.6032, 5.6329



19.4845, -5.0407, -3.1349

Square

The Square scheme is like the rectangle color scheme, but the four colors are evenly spaced on the color wheel.



19.4845, 0.6025, 5.6332



19.4845, -6.2824, 2.5367



19.4845, -2.6312, -4.9872



19.4845, 4.8213, -0.5409

Rectangle

The Rectangle color scheme consists of four colors that form a rectangle on the color wheel.



19.4841, 0.6032, 5.6329



19.4845, -4.1473, 5.0990



19.4845, -2.6312, -4.9872



19.4845, 2.2736, -4.0844

Sweetspot

The Sweet Spot groups the original color and five complimentary colors.



19.4845, 0.6025, 5.6332



28.4521, -0.9540, 3.6837



17.1023, 6.9120, -0.6515



14.9044, -0.4855, 1.9767



63.7533, -3.4017, 3.4638



15.6573, -0.8354, 0.8507

Same Dimension

The Same Dimension uses a secret algorithm to generate beautiful new colors.



19.4845, 0.6025, 5.6332



24.7002, 1.5833, 8.5446



22.1452, -3.9074, 7.9607



11.9518, -0.4677, 1.3178



22.0580, 10.6316, 13.7782



53.5310, 30.4875, 33.5193

Inverse Universe

The Inverse Universe completely reimagines the original color for something new.



18.1590, -1.6218, -4.6761



22.5422, -2.0009, -8.2864



15.6059, 2.9800, -8.7597



11.7739, -0.7703, -0.0596



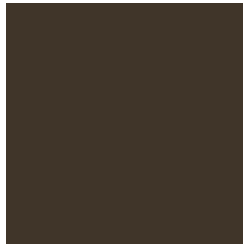
16.8571, 3.7836, -29.2376



39.9787, 13.9706, -80.1285

Previews

White Background



This preview shows how the HunterLab color 19.4841, 0.6032, 5.6329 looks on a white background.

Color Contrast Check

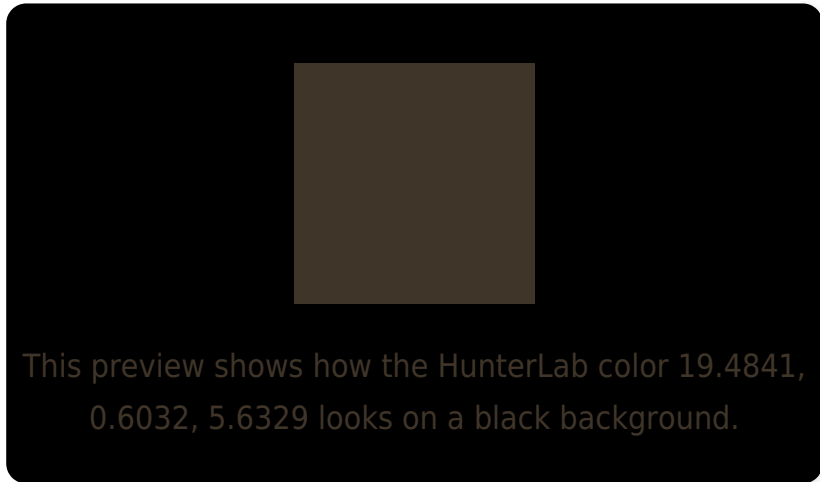
Large Text (above 18pt) WCAG AA ✓ Pass

Any Text WCAG AA ✓ Pass

Large Text (above 18pt) WCAG AAA ✓ Pass

Any Text WCAG AAA ✓ Pass

Black Background



Color Contrast Check

Large Text (above 18pt) WCAG AA × Fail

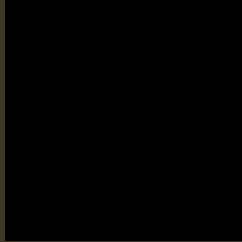
Any Text WCAG AA × Fail

Large Text (above 18pt) WCAG AAA × Fail

Any Text WCAG AAA × Fail

If you want to check with other color combinations, try the [Color Contrast Checker](#).

HunterLab 19.4841, 0.6032, 5.6329 Background



This preview shows how black text looks on a background with the HunterLab color 19.4841, 0.6032, 5.6329.



This preview shows how white text looks on a background with the HunterLab color 19.4841, 0.6032,

Color Blindness Simulation

Color vision deficiency is a very complex topic, and I could not describe the different causes any better than Wikipedia does, so if you want to learn more, you should check out their [article about color blindness](#).

Dichromacy



Original Color

19.4841, 0.6032, 5.6329

Protanopia

19.5687, -1.5190, 5.3948

Deuteranopia

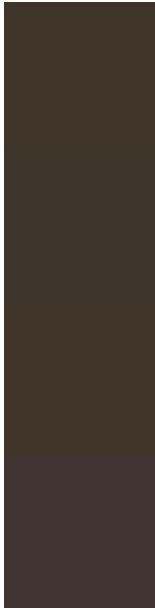
19.5707, 0.8965, 5.7196



Tritanopia

19.4095, 3.3103, 0.9771

Trichromacy



Original Color

19.4841, 0.6032, 5.6329

Protanomaly

19.4874, -0.5641, 5.3337

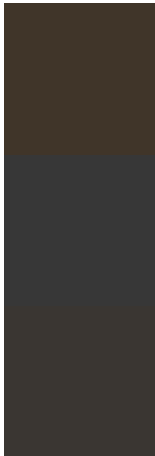
Deuteranomaly

19.5707, 0.8965, 5.7196

Tritanomaly

19.5195, 2.2707, 2.9016

Monochromacy



Original Color

19.4841, 0.6032, 5.6329

Achromatopsia

19.5459, -1.0429, 1.0620

Achromatomaly

19.4118, -0.5008, 2.7359

CSS Examples

Text

The CSS property to change the color of the text to HunterLab 19.4841, 0.6032, 5.6329 is called "color". The color property can be set on classes, ids or directly on the HTML element.

This example shows how text in the color `rgb(64, 53, 41)` looks like.

```
.text, #text, p{  
    color:rgb(64, 53, 41)  
}
```

If you want to add a text shadow in that color use the text-shadow property, you can generate a text shadow directly with our [CSS Text Shadow Generator](#).

Here you see how black text with a 4 pixel rgb(64, 53, 41) colored shadow looks like.

```
.shadow{ text-shadow: 4px 4px 2px rgb(64, 53, 41) }
```

Border

The CSS property to change the border of an element to HunterLab 19.4841, 0.6032, 5.6329 is called "border". The border property can be set on classes, ids or directly on the HTML element.

This example shows the color as border, it can be applied via the CSS property "border" or "border-color".

```
.border, #border, table{ border:4px solid rgb(64, 53, 41) }
```


If only the border color should be changed use the property `border-color`.

```
.border{ border-color:rgb(64, 53, 41) }
```

If you want to add a box shadow in that color use:

Here you see how a box with a 4 pixel `rgb(64, 53, 41)` colored shadow looks like.

```
.boxshadow{ -moz-box-shadow:4px 4px 4px  
4px rgb(64, 53, 41); -webkit-box-  
shadow:4px 4px 4px 4px rgb(64, 53, 41);  
box-shadow:4px 4px 4px 4px rgb(64, 53, 41)  
}
```

Background

The CSS property to change the background color of an element to HunterLab 19.4841, 0.6032, 5.6329 is called "background". The background property can be set on classes, ids or directly on the HTML element.

```
.background, #background, body{  
background: rgb(64, 53, 41) }
```

If only the background color should be changed can be used:

```
.background{ background-color: rgb(64, 53,  
41) }
```

This example shows the color as background, it is applied via the CSS property "background".

To optimize and compress your CSS code, you can use our [online CSS compressor and optimizer](#) based on csstidy. If you want to create a linear or radial gradient as background or border, check our [CSS Gradient Generator](#).

Hey! You found this booklet interesting? Support Converting Colors with the new Membership Option!

The pro membership hides all ads, plus gives you double the colors in the color bucket, and more awesome pro features!

[Learn more, Memberships starting at \\$2.50/m!](#)

**Follow me
on Twitter!**

@ConvertingColor