

Converting Colors

HunterLab(19.4468, 9.1661,
6.8334)

Have a look what the booklet for
HunterLab(19.4468, 9.1661, 6.8334)
contains.

| | |
|---|----|
| HunterLab(19.3899, 9.0189, 6.7539) | 3 |
| <i>Conversions</i> | 4 |
| <i>Details</i> | 6 |
| <i>Harmonies</i> | 12 |
| <i>Previews</i> | 24 |
| <i>Color Blindness Simulation</i> | 28 |
| <i>CSS Examples</i> | 31 |

Color

**HunterLab(19.3899, 9.0189,
6.7539)**

Conversions

Conversions Part 1

| Format | Color |
|-------------|--------------------------|
| Hex | 512D25 |
| RGB | 81, 45, 37 |
| RGB Percent | 32%, 18%, 15% |
| CMY | 0.6824, 0.8235, 0.8549 |
| CMYK | 0.00, 0.44, 0.54, 0.68 |
| HSL | 11°, 37%, 23% |
| HSV | 11°, 54%, 32% |
| XYZ | 4.6657, 3.7597, 2.2301 |
| YIQ | 54.8520, 24.0240, 5.1440 |

Conversions

Conversions Part 2

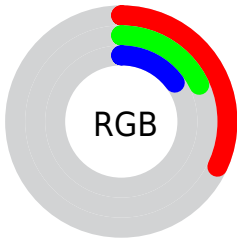
| Format | Color |
|-------------------------------------|------------------------------|
| RYB | 81, 47, 37 |
| Decimal | 5319973 |
| CIELab | 22.86, 15.57, 12.28 |
| CIELCh | 23, 19.831, 38.264 |
| Yxy | 3.7599, 0.4379, 0.3528 |
| Android (android.graphics.Color) | 4283510053 (0xFF512D25) |
| YUV | 54.8520, -8.8010, 22.9318 |
| Hunter-Lab | 19.3899, 9.0189, 6.7539 |

Details

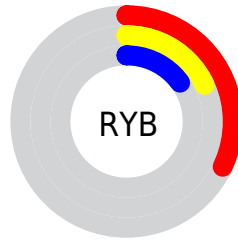
The HunterLab color **19.3899, 9.0189, 6.7539** is a dark color, and the websafe version is hex **663333**. A complement of this color would be **23.9838, -7.5084, -4.5969**, and the grayscale version is **19.5193, -1.0415, 1.0605**.

A 20% lighter version of the original color is **36.0512, 10.0894, 9.2629**, and **5.9777, 10.2369, 3.8626** is the 20% darker color. If you saturate the color by 10%, you get **18.0220, 11.2399, 7.4989**, and if you desaturate by 10%, it is **20.8868, 6.8657, 5.9145**.

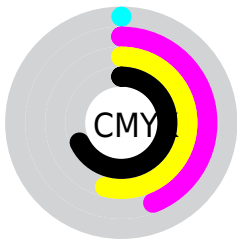
Distribution



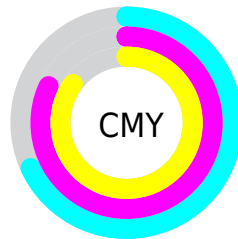
- Red (32%)
- Green (18%)
- Blue (15%)



- Red (32%)
- Yellow (18%)
- Blue (15%)



- Cyan (0%)
- Magenta (44%)
- Yellow (54%)
- Black (68%)



- Cyan (68%)
- Magenta (82%)
- Yellow (85%)

Brightness & Saturation Gradients

These gradients show how the HunterLab color 19.3899, 9.0189, 6.7539 changes by changing the brightness by 10 percent. The first figure shows a shift by +10% for each color and the second figure -10%.

Similar to the brightness gradients but the following saturation gradients show a change of the HunterLab color 19.3899, 9.0189, 6.7539 by changing the saturation by 10% instead.

■ 19.3899, 9.0189,
6.7539

■ 19.3899, 9.0189,
6.7539

■ 117.0836, 10.9252,
18.2274

■ 12.4103, 8.2742,
5.3828

■ 36.1457, 10.0674,
9.4551

■ 5.6280, 11.7551,
3.9396

■ 45.7377, 10.4213,
10.7373

0.0000, NaN, NaN

■ 56.0541, 10.6829,
11.9977

0.0000, NaN, NaN

0.0000, NaN, NaN

■ 67.0472, 10.8635,
13.2462

0.0000, NaN, NaN

■ 78.6777, 10.9717,
14.4894

0.0000, NaN, NaN

0.0000, NaN, NaN

■ 90.9123, 11.0144,

15.7318

0.0000, NaN, NaN

103.7225, 10.9974,
16.9770

19.3899, 9.0189,
6.7539

19.3899, 9.0189,
6.7539

18.0220, 11.2399,
7.4989

20.8868, 6.8657,
5.9145

16.7996, 13.4906,
8.1182

22.4950, 4.8051,
5.0041

15.7420, 15.7022,
8.5788

24.2006, 2.8434,
4.0416

14.8602, 17.7538,
8.9405

25.9916, 0.9796,
3.0406

14.4341, 18.7700,
9.2228

27.8577, -0.7918,
2.0106

■ 29.7904, -2.4790,
0.9585

■ 31.7825, -4.0905,
-0.1112

■ 33.8280, -5.6350,
-1.1952

■ 35.9219, -7.1206,
-2.2912

Harmonies

Analogous

The Analogous color harmony consists of three colors that are next to each other on the color wheel.



19.3904, 11.9351, 2.5860



19.3899, 9.0189, 6.7539



19.3904, 3.4840, 8.8017

Triad

The Triadic color harmony groups three colors that are evenly spaced from another and form a triangle on the color wheel.



19.3904, 9.0178, 6.7542



19.3904, -10.7394, 4.7371



19.3904, 0.6724, -13.4806

Complementary

The Complementary color scheme is a pair of colors which are on the opposite of each other on the color wheel.



19.3899, 9.0189, 6.7539



23.9838, -7.5084, -4.5969

Split Complementary

Split-complementary colors differ from the complementary color scheme. The scheme consists of three colors, the original color and two neighbors of the complement color.



19.3904, -5.1759, -12.3680



19.3899, 9.0189, 6.7539



19.3904, -11.2969, -0.6110

Square

The Square scheme is like the rectangle color scheme, but the four colors are evenly spaced on the color wheel.



19.3904, 9.0178, 6.7542



19.3904, -7.7540, 7.9116



19.3904, -9.3835, -7.1666



19.3904, 6.7437, -9.8570

Rectangle

The Rectangle color scheme consists of four colors that form a rectangle on the color wheel.



19.3899, 9.0189, 6.7539



19.3904, -0.6803, 9.2027



19.3904, -9.3835, -7.1666



19.3904, -1.3885, -13.6654

Sweetspot

The Sweet Spot groups the original color and five complimentary colors.



19.3904, 9.0178, 6.7542



33.3717, 1.8091, 4.2607



18.8744, 16.9017, -8.2404



16.8616, 1.0576, 2.2445



67.9972, -3.6282, 3.6944



19.0543, -1.0167, 1.0353

Same Dimension

The Same Dimension uses a secret algorithm to generate beautiful new colors.



19.3904, 9.0178, 6.7542



23.0211, 15.5157, 10.0353



24.1214, -0.0688, 10.5600



13.9686, -0.0111, 1.2756



18.5534, 25.3152, 11.8757



43.3987, 64.4302, 27.8700

Inverse Universe

The Inverse Universe completely reimagines the original color for something new.



23.9838, -7.5084, -4.5969



30.1395, -10.5832, -7.6662



18.4764, 1.1064, -13.5759



14.3818, -1.4565, 0.2633



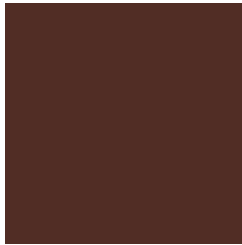
27.5543, -10.5330, -11.7027



65.2610, -24.0745, -29.6006

Previews

White Background



This preview shows how the HunterLab color 19.3899, 9.0189, 6.7539 looks on a white background.

Color Contrast Check

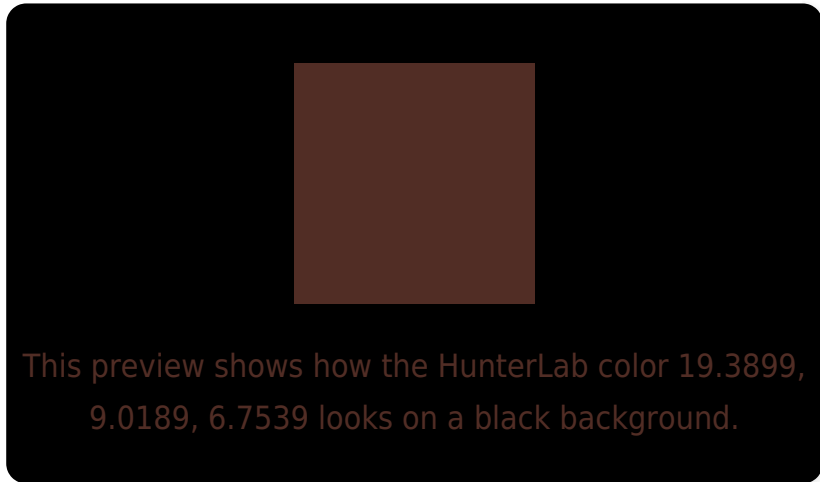
Large Text (above 18pt) WCAG AA ✓ Pass

Any Text WCAG AA ✓ Pass

Large Text (above 18pt) WCAG AAA ✓ Pass

Any Text WCAG AAA ✓ Pass

Black Background



Color Contrast Check

Large Text (above 18pt) WCAG AA × Fail

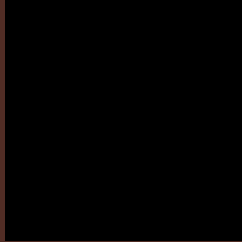
Any Text WCAG AA × Fail

Large Text (above 18pt) WCAG AAA × Fail

Any Text WCAG AAA × Fail

If you want to check with other color combinations, try the [Color Contrast Checker](#).

HunterLab 19.3899, 9.0189, 6.7539 Background



This preview shows how black text looks on a background with the HunterLab color 19.3899, 9.0189, 6.7539.

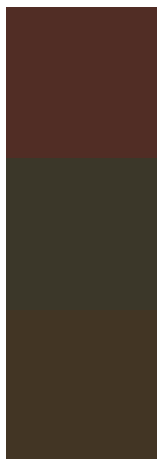


This preview shows how white text looks on a background with the HunterLab color 19.3899, 9.0189,

Color Blindness Simulation

Color vision deficiency is a very complex topic, and I could not describe the different causes any better than Wikipedia does, so if you want to learn more, you should check out their [article about color blindness](#).

Dichromacy



Original Color

19.3899, 9.0189, 6.7539

Protanopia

19.5506, -1.6185, 5.6568

Deuteranopia

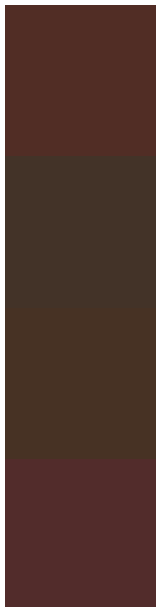
19.5751, 0.7442, 7.0197



Tritanopia

19.4947, 10.6903, 4.0206

Trichromacy



Original Color

19.3899, 9.0189, 6.7539

Protanomaly

19.2721, 2.2252, 5.7384

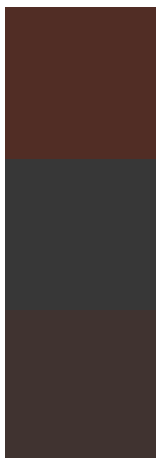
Deuteranomaly

19.3602, 3.5303, 6.8800

Tritanomaly

19.4155, 10.3033, 5.1648

Monochromacy



Original Color

19.3899, 9.0189, 6.7539

Achromatopsia

19.5459, -1.0429, 1.0620

Achromatomaly

19.1600, 2.1671, 3.1911

CSS Examples

Text

The CSS property to change the color of the text to HunterLab 19.3899, 9.0189, 6.7539 is called "color". The color property can be set on classes, ids or directly on the HTML element.

This example shows how text in the color `rgb(81, 45, 37)` looks like.

```
.text, #text, p{  
    color:rgb(81, 45, 37)  
}
```

If you want to add a text shadow in that color use the text-shadow property, you can generate a text shadow directly with our [CSS Text Shadow Generator](#).

Here you see how black text with a 4 pixel rgb(81, 45, 37) colored shadow looks like.

```
.shadow{ text-shadow: 4px 4px 2px rgb(81, 45, 37) }
```

Border

The CSS property to change the border of an element to HunterLab 19.3899, 9.0189, 6.7539 is called "border". The border property can be set on classes, ids or directly on the HTML element.

This example shows the color as border, it can be applied via the CSS property "border" or "border-color".

```
.border, #border, table{ border:4px solid rgb(81, 45, 37) }
```


If only the border color should be changed use the property border-color.

```
.border{ border-color:rgb(81, 45, 37) }
```

If you want to add a box shadow in that color use:

Here you see how a box with a 4 pixel rgb(81, 45, 37) colored shadow looks like.

```
.boxshadow{ -moz-box-shadow:4px 4px 4px  
4px rgb(81, 45, 37); -webkit-box-  
shadow:4px 4px 4px 4px rgb(81, 45, 37);  
box-shadow:4px 4px 4px 4px rgb(81, 45, 37)  
}
```

Background

The CSS property to change the background color of an element to HunterLab 19.3899, 9.0189, 6.7539 is called "background". The background property can be set on classes, ids or directly on the HTML element.

```
.background, #background, body{  
background: rgb(81, 45, 37) }
```

If only the background color should be changed can be used:

```
.background{ background-color: rgb(81, 45,  
37) }
```

This example shows the color as background, it is applied via the CSS property "background".

To optimize and compress your CSS code, you can use our [online CSS compressor and optimizer](#) based on csstidy. If you want to create a linear or radial gradient as background or border, check our [CSS Gradient Generator](#).

Hey! You found this booklet interesting? Support Converting Colors with the new Membership Option!

The pro membership hides all ads, plus gives you double the colors in the color bucket, and more awesome pro features!

[Learn more, Memberships starting at \\$2.50/m!](#)

**Follow me
on Twitter!**

@ConvertingColor