

Converting Colors

HunterLab(19.4944, 0.5506,
5.9856)

Have a look what the booklet for
HunterLab(19.4944, 0.5506, 5.9856)
contains.

HunterLab(19.4664, 0.5077, 5.8897)	3
<i>Conversions</i>	4
<i>Details</i>	6
<i>Harmonies</i>	12
<i>Previews</i>	24
<i>Color Blindness Simulation</i>	28
<i>CSS Examples</i>	31

Color

**HunterLab(19.4664, 0.5077,
5.8897)**

Conversions

Conversions Part 1

Format	Color
Hex	403528
RGB	64, 53, 40
RGB Percent	25%, 21%, 16%
CMY	0.7490, 0.7921, 0.8431
CMYK	0.00, 0.17, 0.37, 0.75
HSL	33°, 23%, 20%
HSV	33°, 37%, 25%
XYZ	3.7705, 3.7894, 2.5402
YIQ	54.8070, 10.7290, -1.7110

Conversions

Conversions Part 2

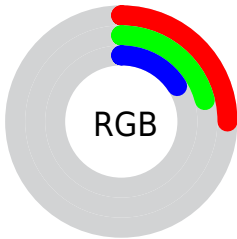
Format	Color
RYB	60, 64, 40
Decimal	4207912
CIELab	22.96, 2.58, 10.03
CIELCh	23, 10.357, 75.564
Yxy	3.7896, 0.3733, 0.3752
Android (android.graphics.Color)	4282397992 (0xFF403528)
YUV	54.8070, -7.2999, 8.0623
Hunter-Lab	19.4664, 0.5077, 5.8897

Details

The HunterLab color **19.4664, 0.5077, 5.8897** is a dark color, and the websafe version is hex **333333**. A complement of this color would be **17.8573, -1.4197, -5.1260**, and the grayscale version is **19.5022, -1.0406, 1.0596**.

A 20% lighter version of the original color is **36.0892, 0.0727, 8.1199**, and **5.6779, 1.8629, 3.5313** is the 20% darker color. If you saturate the color by 10%, you get **18.6824, 1.1375, 6.8244**, and if you desaturate by 10%, it is **20.2792, -0.0472, 4.8165**.

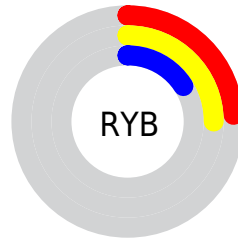
Distribution



Red (25%)

Green (21%)

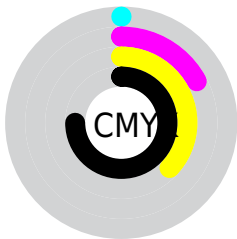
Blue (16%)



Red (24%)

Yellow (25%)

Blue (16%)

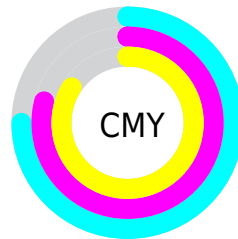


Cyan (0%)

Magenta (17%)

Yellow (37%)

Black (75%)



Cyan (75%)

Magenta (79%)

Yellow (84%)

Brightness & Saturation Gradients

These gradients show how the HunterLab color 19.4664, 0.5077, 5.8897 changes by changing the brightness by 10 percent. The first figure shows a shift by +10% for each color and the second figure -10%.

Similar to the brightness gradients but the following saturation gradients show a change of the HunterLab color 19.4664, 0.5077, 5.8897 by changing the saturation by 10% instead.

■ 19.4664, 0.5077,
5.8897

■ 19.4664, 0.5077,
5.8897

■ 117.2228, -3.4769,
16.1665

■ 12.4762, 0.6743,
4.6399

■ 36.2397, -0.0427,
8.2364

■ 5.7276, 1.6584,
4.0093

■ 45.8395, -0.4042,
9.3699

0.0000, NaN, NaN

0.0000, NaN, NaN

■ 56.1630, -0.8148,
10.4945

0.0000, NaN, NaN

■ 67.1628, -1.2701,
11.6173

0.0000, NaN, NaN

■ 78.7996, -1.7665,
12.7431

0.0000, NaN, NaN

0.0000, NaN, NaN

■ 91.0402, -2.3013,

13.8751

0.0000, NaN, NaN

103.8561, -2.8721,
15.0157

19.4664, 0.5077,
5.8897

19.4664, 0.5077,
5.8897

18.6824, 1.1375,
6.8244

20.2792, -0.0472,
4.8165

17.9276, 1.8472,
7.6096

21.1177, -0.5287,
3.6143

17.2045, 2.6379,
8.2358

21.9806, -0.9414,
2.2933

16.5149, 3.5099,
8.6947

22.8664, -1.2893,
0.8627

15.8601, 4.4574,
8.9921

23.7737, -1.5766,
-0.6686

■ 15.2299, 5.4161,
9.3005

■ 24.7012, -1.8073,
-2.2928

■ 15.0758, 5.6541,
9.3886

■ 25.6477, -1.9853,
-4.0024

■ 26.6121, -2.1141,
-5.7911

■ 27.5933, -2.1972,
-7.6527

Harmonies

Analogous

The Analogous color harmony consists of three colors that are next to each other on the color wheel.



19.4669, 3.4254, 4.7698



19.4664, 0.5077, 5.8897



19.4669, -2.6522, 5.8685

Triad

The Triadic color harmony groups three colors that are evenly spaced from another and form a triangle on the color wheel.



19.4669, 0.5070, 5.8900



19.4669, -6.5831, -0.5654



19.4669, 3.5181, -3.4647

Complementary

The Complementary color scheme is a pair of colors which are on the opposite of each other on the color wheel.



19.4664, 0.5077, 5.8897



17.8573, -1.4197, -5.1260

Split Complementary

Split-complementary colors differ from the complementary color scheme. The scheme consists of three colors, the original color and two neighbors of the complement color.



19.4669, 0.6270, -5.4124



19.4664, 0.5077, 5.8897



19.4669, -5.1355, -3.5643

Square

The Square scheme is like the rectangle color scheme, but the four colors are evenly spaced on the color wheel.



19.4669, 0.5070, 5.8900



19.4669, -6.6106, 2.4536



19.4669, -2.5397, -5.4515



19.4669, 5.2379, -0.4458

Rectangle

The Rectangle color scheme consists of four colors that form a rectangle on the color wheel.



19.4664, 0.5077, 5.8897



19.4669, -4.4676, 5.2196



19.4669, -2.5397, -5.4515



19.4669, 2.6430, -4.2863

Sweetspot

The Sweet Spot groups the original color and five complimentary colors.



19.4669, 0.5070, 5.8900



28.4994, -1.0335, 3.7344



16.8772, 7.2194, -0.5582



14.9303, -0.5290, 2.0043



63.7533, -3.4017, 3.4638



15.6573, -0.8354, 0.8507

Same Dimension

The Same Dimension uses a secret algorithm to generate beautiful new colors.



19.4669, 0.5070, 5.8900



24.6605, 1.4567, 8.9363



22.0984, -4.1075, 8.1588



11.9665, -0.4923, 1.3338



22.4415, 9.7979, 13.9999



54.5194, 28.2549, 34.0893

Inverse Universe

The Inverse Universe completely reimagines the original color for something new.



17.8573, -1.4197, -5.1260



22.0357, -1.6363, -9.1010



15.3464, 3.2779, -9.2260



11.7591, -0.7458, -0.0775



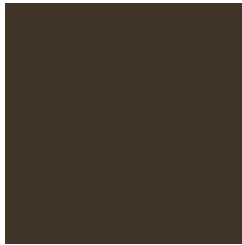
16.4103, 4.6633, -30.5782



38.8218, 16.4007, -83.9282

Previews

White Background



This preview shows how the HunterLab color 19.4664, 0.5077, 5.8897 looks on a white background.

Color Contrast Check

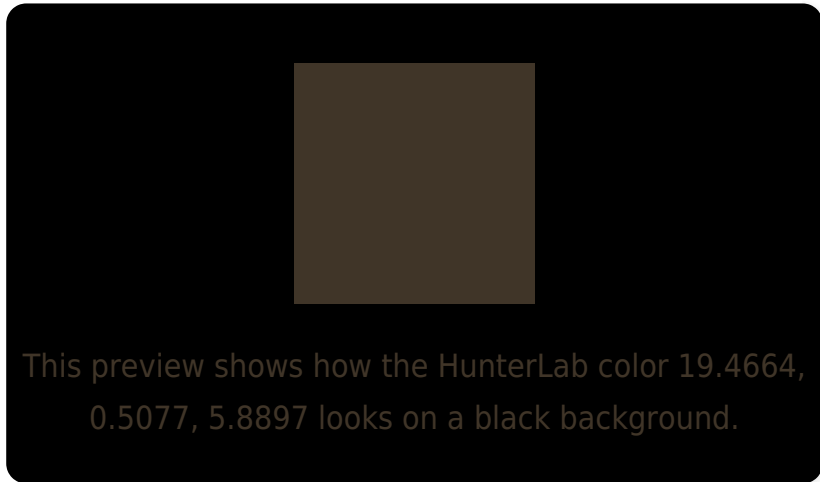
Large Text (above 18pt) WCAG AA ✓ Pass

Any Text WCAG AA ✓ Pass

Large Text (above 18pt) WCAG AAA ✓ Pass

Any Text WCAG AAA ✓ Pass

Black Background



Color Contrast Check

Large Text (above 18pt) WCAG AA × Fail

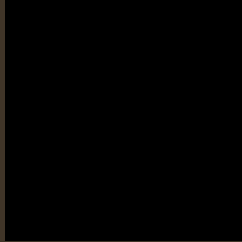
Any Text WCAG AA × Fail

Large Text (above 18pt) WCAG AAA × Fail

Any Text WCAG AAA × Fail

If you want to check with other color combinations, try the [Color Contrast Checker](#).

HunterLab 19.4664, 0.5077, 5.8897 Background



This preview shows how black text looks on a background with the HunterLab color 19.4664, 0.5077, 5.8897.

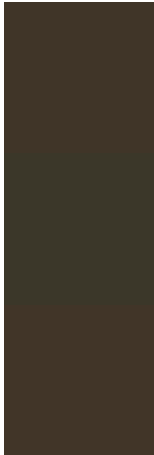


This preview shows how white text looks on a background with the HunterLab color 19.4664, 0.5077,

Color Blindness Simulation

Color vision deficiency is a very complex topic, and I could not describe the different causes any better than Wikipedia does, so if you want to learn more, you should check out their [article about color blindness](#).

Dichromacy



Original Color

19.4664, 0.5077, 5.8897

Protanopia

19.5506, -1.6185, 5.6568

Deuteranopia

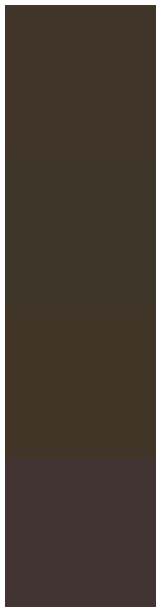
19.5531, 0.8017, 5.9753



Tritanopia

19.4980, 3.5977, 1.0868

Trichromacy



Original Color

19.4664, 0.5077, 5.8897

Protanomaly

19.4693, -0.6632, 5.5968

Deuteranomaly

19.5531, 0.8017, 5.9753

Tritanomaly

19.5195, 2.2707, 2.9016

Monochromacy



Original Color

19.4664, 0.5077, 5.8897

Achromatopsia

19.5459, -1.0429, 1.0620

Achromatomaly

19.4118, -0.5008, 2.7359

CSS Examples

Text

The CSS property to change the color of the text to HunterLab 19.4664, 0.5077, 5.8897 is called "color". The color property can be set on classes, ids or directly on the HTML element.

This example shows how text in the color `rgb(64, 53, 40)` looks like.

```
.text, #text, p{  
    color:rgb(64, 53, 40)  
}
```

If you want to add a text shadow in that color use the text-shadow property, you can generate a text shadow directly with our [CSS Text Shadow Generator](#).

Here you see how black text with a 4 pixel rgb(64, 53, 40) colored shadow looks like.

```
.shadow{ text-shadow: 4px 4px 2px rgb(64, 53, 40) }
```

Border

The CSS property to change the border of an element to HunterLab 19.4664, 0.5077, 5.8897 is called "border".

The border property can be set on classes, ids or directly on the HTML element.

This example shows the color as border, it can be applied via the CSS property "border" or "border-color".

```
.border, #border, table{ border:4px solid rgb(64, 53, 40) }
```


If only the border color should be changed use the property `border-color`.

```
.border{ border-color:rgb(64, 53, 40) }
```

If you want to add a box shadow in that color use:

Here you see how a box with a 4 pixel `rgb(64, 53, 40)` colored shadow looks like.

```
.boxshadow{ -moz-box-shadow:4px 4px 4px  
4px rgb(64, 53, 40); -webkit-box-  
shadow:4px 4px 4px 4px rgb(64, 53, 40);  
box-shadow:4px 4px 4px 4px rgb(64, 53, 40)  
}
```

Background

The CSS property to change the background color of an element to HunterLab 19.4664, 0.5077, 5.8897 is called "background". The background property can be set on classes, ids or directly on the HTML element.

```
.background, #background, body{  
background: rgb(64, 53, 40) }
```

If only the background color should be changed can be used:

```
.background{ background-color: rgb(64, 53,  
40) }
```

This example shows the color as background, it is applied via the CSS property "background".

To optimize and compress your CSS code, you can use our [online CSS compressor and optimizer](#) based on csstidy. If you want to create a linear or radial gradient as background or border, check our [CSS Gradient Generator](#).

Hey! You found this booklet interesting? Support Converting Colors with the new Membership Option!

The pro membership hides all ads, plus gives you double the colors in the color bucket, and more awesome pro features!

[Learn more, Memberships starting at \\$2.50/m!](#)

**Follow me
on Twitter!**

@ConvertingColor