

Converting Colors

HunterLab(19.5473, -0.2526,
6.3491)

Have a look what the booklet for
HunterLab(19.5473, -0.2526, 6.3491)
contains.

HunterLab(19.5999, -0.2821, 6.2661)	3
<i>Conversions</i>	4
<i>Details</i>	6
<i>Harmonies</i>	12
<i>Previews</i>	24
<i>Color Blindness Simulation</i>	28
<i>CSS Examples</i>	31

Color

**HunterLab(19.5999, -0.2821,
6.2661)**

Conversions

Conversions Part 1

Format	Color
Hex	3F3627
RGB	63, 54, 39
RGB Percent	25%, 21%, 15%
CMY	0.7529, 0.7882, 0.8471
CMYK	0.00, 0.14, 0.38, 0.75
HSL	38°, 24%, 20%
HSV	38°, 38%, 25%
XYZ	3.7353, 3.8416, 2.4641
YIQ	54.9810, 10.1790, -2.7570

Conversions

Conversions Part 2

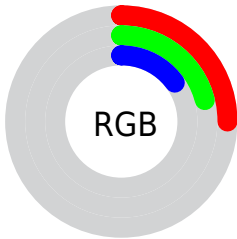
Format	Color
R_{YB}	53, 63, 39
Decimal	4142631
CIE _{Lab}	23.14, 1.28, 10.91
CIE _{LCh}	23, 10.988, 83.298
Yxy	3.8417, 0.3720, 0.3826
Android (android.graphics.Color)	4282332711 (0xFF3F3627)
YUV	54.9810, -7.8786, 7.0327
Hunter-Lab	19.5999, -0.2821, 6.2661

Details

The HunterLab color **19.5999, -0.2821, 6.2661** is a dark color, and the websafe version is hex **333333**. A complement of this color would be **17.0412, -0.5893, -5.8711**, and the grayscale version is **19.5633, -1.0438, 1.0629**.

A 20% lighter version of the original color is **36.5061, -1.2527, 8.8507**, and **5.9626, 0.8544, 3.6891** is the 20% darker color. If you saturate the color by 10%, you get **18.9442, 0.1295, 7.2410**, and if you desaturate by 10%, it is **20.2788, -0.6199, 5.1373**.

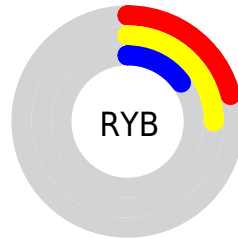
Distribution



Red (25%)

Green (21%)

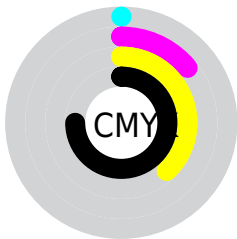
Blue (15%)



Red (21%)

Yellow (25%)

Blue (15%)

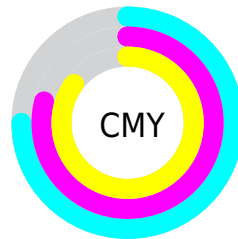


Cyan (0%)

Magenta (14%)

Yellow (38%)

Black (75%)



Cyan (75%)

Magenta (79%)

Yellow (85%)

Brightness & Saturation Gradients

These gradients show how the HunterLab color 19.5999, -0.2821, 6.2661 changes by changing the brightness by 10 percent. The first figure shows a shift by +10% for each color and the second figure -10%.

Similar to the brightness gradients but the following saturation gradients show a change of the HunterLab color 19.5999, -0.2821, 6.2661 by changing the saturation by 10% instead.

■ 19.5999, -0.2821,
6.2661

■ 19.5999, -0.2821,
6.2661

■ 117.4654, -4.8934,
17.0067

■ 12.5914, -0.0115,
4.9478

■ 36.4039, -1.0075,
8.7485

■ 5.8970, 0.6327,
4.1279

■ 46.0170, -1.4456,
9.9395

0.0000, NaN, NaN

0.0000, NaN, NaN

■ 56.3530, -1.9275,
11.1168

0.0000, NaN, NaN

■ 67.3644, -2.4498,
12.2885

0.0000, NaN, NaN

■ 79.0122, -3.0096,
13.4601

0.0000, NaN, NaN

0.0000, NaN, NaN

■ 91.2633, -3.6047,

104.0892, -4.2332,
15.8169

19.5999, -0.2821,
6.2661

19.5999, -0.2821,
6.2661

18.9442, 0.1295,
7.2410

20.2788, -0.6199,
5.1373

18.3113, 0.6191,
8.0534

20.9784, -0.8846,
3.8622

17.7028, 1.1873,
8.6969

21.6982, -1.0799,
2.4496

17.1196, 1.8343,
9.1667

22.4372, -1.2093,
0.9080

16.5612, 2.5524,
9.4785

23.1944, -1.2761,
-0.7542

■ 16.0171, 3.2802,
9.7995

■ 23.9690, -1.2837,
-2.5293

■ 15.9148, 3.4183,
9.8665

■ 24.7600, -1.2356,
-4.4097

■ 25.5666, -1.1349,
-6.3885

■ 26.3882, -0.9848,
-8.4591

Harmonies

Analogous

The Analogous color harmony consists of three colors that are next to each other on the color wheel.



19.6004, 2.9895, 5.4037



19.5999, -0.2821, 6.2661



19.6004, -3.5511, 5.9371

Triad

The Triadic color harmony groups three colors that are evenly spaced from another and form a triangle on the color wheel.



19.6004, -0.2828, 6.2663



19.6004, -6.6647, -1.5385



19.6004, 4.4393, -2.9983

Complementary

The Complementary color scheme is a pair of colors which are on the opposite of each other on the color wheel.



19.5999, -0.2821, 6.2661



17.0412, -0.5893, -5.8711

Split Complementary

Split-complementary colors differ from the complementary color scheme. The scheme consists of three colors, the original color and two neighbors of the complement color.



19.6004, 1.5897, -5.5013



19.5999, -0.2821, 6.2661



19.6004, -4.7809, -4.5637

Square

The Square scheme is like the rectangle color scheme, but the four colors are evenly spaced on the color wheel.



19.6004, -0.2828, 6.2663



19.6004, -7.0915, 1.7746



19.6004, -1.7994, -6.1179



19.6004, 5.8326, 0.3317

Rectangle

The Rectangle color scheme consists of four colors that form a rectangle on the color wheel.



19.5999, -0.2821, 6.2661



19.6004, -5.3067, 5.0533



19.6004, -1.7994, -6.1179



19.6004, 3.6110, -3.9857

Sweetspot

The Sweet Spot groups the original color and five complimentary colors.



19.6004, -0.2828, 6.2663



27.8104, -1.3242, 3.8141



16.5012, 6.9619, 0.1644



14.2489, -0.6749, 1.9900



62.6995, -3.3455, 3.4066



14.8260, -0.7911, 0.8055

Same Dimension

The Same Dimension uses a secret algorithm to generate beautiful new colors.



19.6004, -0.2828, 6.2663



24.5672, 0.1619, 9.3750



21.6065, -4.6062, 7.9659



11.2600, -0.5585, 1.2946



23.5023, 6.0720, 14.5883



58.2030, 18.5594, 36.1893

Inverse Universe

The Inverse Universe completely reimagines the original color for something new.



17.0412, -0.5893, -5.8711



20.4451, -0.2513, -10.3248



15.1591, 3.7269, -8.9866



10.9579, -0.6024, -0.1238



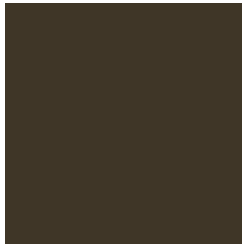
14.2783, 8.1200, -35.3753



33.8820, 26.4306, -99.4056

Previews

White Background



This preview shows how the HunterLab color 19.5999, -0.2821, 6.2661 looks on a white background.

Color Contrast Check

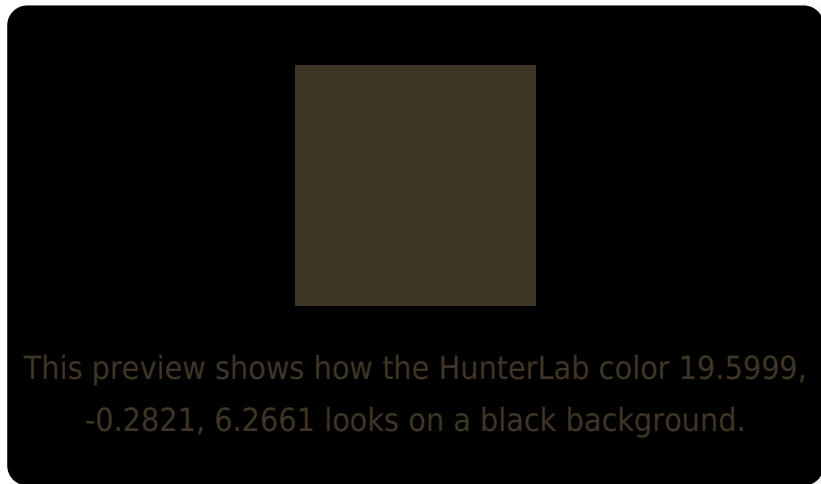
Large Text (above 18pt) WCAG AA ✓ Pass

Any Text WCAG AA ✓ Pass

Large Text (above 18pt) WCAG AAA ✓ Pass

Any Text WCAG AAA ✓ Pass

Black Background



Color Contrast Check

Large Text (above 18pt) WCAG AA × Fail

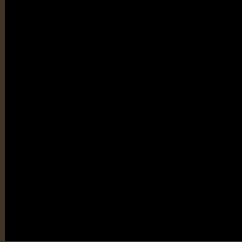
Any Text WCAG AA × Fail

Large Text (above 18pt) WCAG AAA × Fail

Any Text WCAG AAA × Fail

If you want to check with other color combinations, try the [Color Contrast Checker](#).

HunterLab 19.5999, -0.2821, 6.2661 Background



This preview shows how black text looks on a background with the HunterLab color 19.5999, -0.2821, 6.2661.

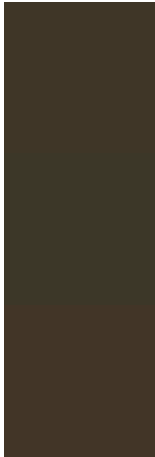


This preview shows how white text looks on a background with the HunterLab color 19.5999, -0.2821, 6.2661.

Color Blindness Simulation

Color vision deficiency is a very complex topic, and I could not describe the different causes any better than Wikipedia does, so if you want to learn more, you should check out their [article about color blindness](#).

Dichromacy



Original Color

19.5999, -0.2821, 6.2661

Protanopia

19.6118, -1.4394, 5.9905

Deuteranopia

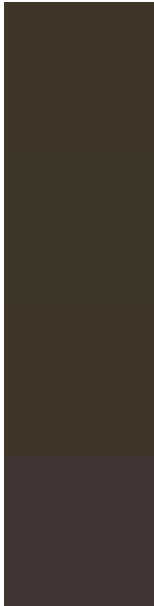
19.6238, 1.0065, 6.3104



Tritanopia

19.6604, 3.0165, 0.8846

Trichromacy



Original Color

19.5999, -0.2821, 6.2661

Protanomaly

19.6918, -1.1601, 6.0694

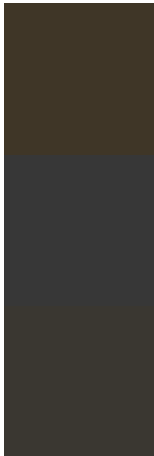
Deuteranomaly

19.5359, 0.7091, 6.2249

Tritanomaly

19.6634, 1.5660, 3.0450

Monochromacy



Original Color

19.5999, -0.2821, 6.2661

Achromatopsia

19.5459, -1.0429, 1.0620

Achromatomaly

19.6308, -1.0240, 3.3024

CSS Examples

Text

The CSS property to change the color of the text to HunterLab 19.5999, -0.2821, 6.2661 is called "color". The color property can be set on classes, ids or directly on the HTML element.

This example shows how text in the color `rgb(63, 54, 39)` looks like.

```
.text, #text, p{  
    color:rgb(63, 54, 39)  
}
```

If you want to add a text shadow in that color use the text-shadow property, you can generate a text shadow directly with our [CSS Text Shadow Generator](#).

Here you see how black text with a 4 pixel rgb(63, 54, 39) colored shadow looks like.

```
.shadow{ text-shadow: 4px 4px 2px rgb(63, 54, 39) }
```

Border

The CSS property to change the border of an element to HunterLab 19.5999, -0.2821, 6.2661 is called "border". The border property can be set on classes, ids or directly on the HTML element.

This example shows the color as border, it can be applied via the CSS property "border" or "border-color".

```
.border, #border, table{ border:4px solid rgb(63, 54, 39) }
```


If only the border color should be changed use the property border-color.

```
.border{ border-color:rgb(63, 54, 39) }
```

If you want to add a box shadow in that color use:

Here you see how a box with a 4 pixel rgb(63, 54, 39) colored shadow looks like.

```
.boxshadow{ -moz-box-shadow:4px 4px 4px  
4px rgb(63, 54, 39); -webkit-box-  
shadow:4px 4px 4px 4px rgb(63, 54, 39);  
box-shadow:4px 4px 4px 4px rgb(63, 54, 39)  
}
```

Background

The CSS property to change the background color of an element to HunterLab 19.5999, -0.2821, 6.2661 is called "background". The background property can be set on classes, ids or directly on the HTML element.

```
.background, #background, body{  
background: rgb(63, 54, 39) }
```

If only the background color should be changed can be used:

```
.background{ background-color: rgb(63, 54,  
39) }
```

This example shows the color as background, it is applied via the CSS property "background".

To optimize and compress your CSS code, you can use our [online CSS compressor and optimizer](#) based on csstidy. If you want to create a linear or radial gradient as background or border, check our [CSS Gradient Generator](#).

Hey! You found this booklet
interesting? Support Converting
Colors with the new Membership
Option!

The pro membership hides all ads, plus gives you
double the colors in the color bucket, and more
awesome pro features!

[Learn more, Memberships starting at \\$2.50/m!](#)

**Follow me
on Twitter!**

@ConvertingColor