

Converting Colors

HunterLab(19.5924, 4.3680,
2.7626)

Have a look what the booklet for
HunterLab(19.5924, 4.3680, 2.7626)
contains.

HunterLab(19.5507, 4.7163, 2.6316)	3
<i>Conversions</i>	4
<i>Details</i>	6
<i>Harmonies</i>	12
<i>Previews</i>	24
<i>Color Blindness Simulation</i>	28
<i>CSS Examples</i>	31

Color

**HunterLab(19.5507, 4.7163,
2.6316)**

Conversions

Conversions Part 1

Format	Color
Hex	463233
RGB	70, 50, 51
RGB Percent	27%, 20%, 20%
CMY	0.7255, 0.8039, 0.8000
CMYK	0.00, 0.29, 0.27, 0.73
HSL	357°, 17%, 24%
HSV	357°, 29%, 27%
XYZ	4.2639, 3.8223, 3.6450
YIQ	56.0940, 11.5990, 4.5510

Conversions

Conversions Part 2

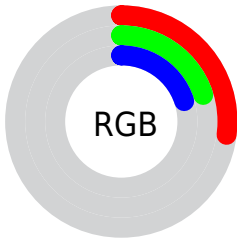
Format	Color
R_{YB}	70, 50, 51
Decimal	4600371
CIE Lab	23.08, 9.23, 2.91
CIE LCh	23, 9.682, 17.513
Yxy	3.8225, 0.3635, 0.3258
Android (android.graphics.Color)	4282790451 (0xFF463233)
YUV	56.0940, -2.5113, 12.1956
Hunter-Lab	19.5507, 4.7163, 2.6316

Details

The HunterLab color **19.5507, 4.7163, 2.6316** is a dark color, and the websafe version is hex **333333**. A complement of this color would be **23.4269, -6.1008, 0.0787**, and the grayscale version is **19.9241, -1.0631, 1.0825**.

A 20% lighter version of the original color is **36.2640, 5.1949, 3.9465**, and **5.8708, 6.4394, 2.2803** is the 20% darker color. If you saturate the color by 10%, you get **17.9290, 6.9644, 3.1752**, and if you desaturate by 10%, it is **21.2849, 2.5346, 2.1389**.

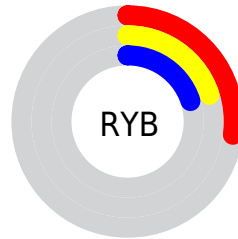
Distribution



 Red (27%)

 Green (20%)

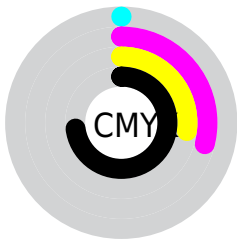
 Blue (20%)



 Red (27%)

 Yellow (20%)

 Blue (20%)

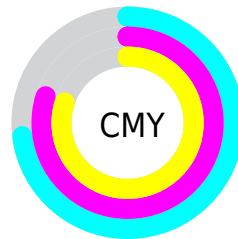


 Cyan (0%)

 Magenta (29%)

 Yellow (27%)

 Black (73%)



 Cyan (73%)

 Magenta (80%)

 Yellow (80%)

Brightness & Saturation Gradients

These gradients show how the HunterLab color 19.5507, 4.7163, 2.6316 changes by changing the brightness by 10 percent. The first figure shows a shift by +10% for each color and the second figure -10%.

Similar to the brightness gradients but the following saturation gradients show a change of the HunterLab color 19.5507, 4.7163, 2.6316 by changing the saturation by 10% instead.

■ 19.5507, 4.7163,
2.6316

■ 19.5507, 4.7163,
2.6316

■ 117.3761, 3.8111,
9.3264

■ 12.5489, 4.3907,
2.0151

■ 36.3434, 5.0126,
3.9346

■ 5.8352, 6.5835,
2.3874

■ 45.9516, 5.0261,
4.6256

0.0000, NaN, NaN

0.0000, NaN, NaN

■ 56.2830, 4.9664,
5.3437

0.0000, NaN, NaN

■ 67.2902, 4.8421,
6.0885

0.0000, NaN, NaN

■ 78.9339, 4.6598,
6.8598

0.0000, NaN, NaN

0.0000, NaN, NaN

■ 91.1811, 4.4245,

104.0034, 4.1404,
8.4793

■ 19.5507, 4.7163,
2.6316

■ 19.5507, 4.7163,
2.6316

■ 17.9290, 6.9644,
3.1752

■ 21.2849, 2.5346,
2.1389

■ 16.4377, 9.2603,
3.7682

■ 23.1143, 0.4276,
1.6929

■ 15.1000, 11.5585,
4.4037

■ 25.0262, -1.6075,
1.2892

■ 13.9413, 13.7805,
5.0637

■ 27.0102, -3.5767,
0.9229

■ 12.9871, 15.8088,
5.7159

■ 29.0576, -5.4875,
0.5888

■ 12.2482, 17.5297,
6.3073

■ 31.1615, -7.3477,
0.2827

■ 11.5481, 19.3769,
6.7996

■ 33.3160, -9.1646,
0.0006

■ 11.4444, 19.6659,
6.8764

■ 35.5165, -10.9449,
-0.2608

■ 37.7588, -12.6945,
-0.5044

Harmonies

Analogous

The Analogous color harmony consists of three colors that are next to each other on the color wheel.



19.5512, 4.8602, -0.1493



19.5507, 4.7163, 2.6316



19.5512, 2.9714, 4.6668

Triad

The Triadic color harmony groups three colors that are evenly spaced from another and form a triangle on the color wheel.



19.5512, 4.7156, 2.6319



19.5512, -5.0864, 4.3944



19.5512, -2.2658, -5.0291

Complementary

The Complementary color scheme is a pair of colors which are on the opposite of each other on the color wheel.



19.5507, 4.7163, 2.6316



23.4269, -6.1008, 0.0787

Split Complementary

Split-complementary colors differ from the complementary color scheme. The scheme consists of three colors, the original color and two neighbors of the complement color.



19.5512, -4.7599, -3.3889



19.5507, 4.7163, 2.6316



19.5512, -6.3217, 2.2046

Square

The Square scheme is like the rectangle color scheme, but the four colors are evenly spaced on the color wheel.



19.5512, 4.7156, 2.6319



19.5512, -2.7360, 5.5749



19.5512, -6.2059, -0.6451



19.5512, 0.7071, -4.8689

Rectangle

The Rectangle color scheme consists of four colors that form a rectangle on the color wheel.



19.5507, 4.7163, 2.6316



19.5512, 1.1921, 5.4541



19.5512, -6.2059, -0.6451



19.5512, -3.1844, -4.6609

Sweetspot

The Sweet Spot groups the original color and five complimentary colors.



19.5512, 4.7156, 2.6319



30.2878, 0.7834, 2.2778



19.9719, 7.0595, -4.7714



15.2149, 0.4987, 1.1724



64.8100, -3.4581, 3.5212



16.4960, -0.8802, 0.8963

Same Dimension

The Same Dimension uses a secret algorithm to generate beautiful new colors.



19.5512, 4.7156, 2.6319



24.3066, 8.2380, 3.9537



21.5880, 0.7981, 5.0282



12.3114, 0.2332, 0.9031



16.3980, 28.1484, 10.0817



40.4323, 69.3032, 25.6484

Inverse Universe

The Inverse Universe completely reimagines the original color for something new.



19.5512, 4.7156, 2.6319



24.3066, 8.2380, 3.9537



21.1138, -2.3736, -3.3025



12.3114, 0.2332, 0.9031



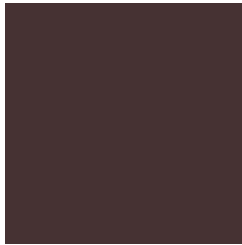
16.3980, 28.1484, 10.0817



40.4323, 69.3032, 25.6484

Previews

White Background



This preview shows how the HunterLab color 19.5507, 4.7163, 2.6316 looks on a white background.

Color Contrast Check

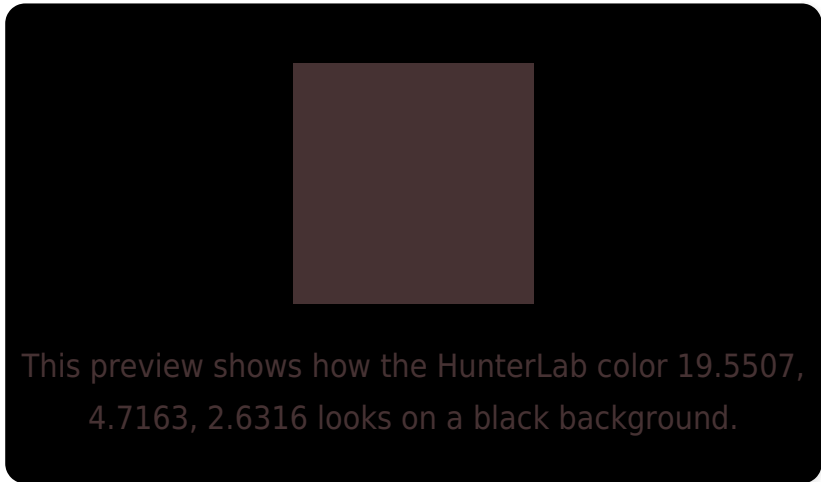
Large Text (above 18pt) WCAG AA ✓ Pass

Any Text WCAG AA ✓ Pass

Large Text (above 18pt) WCAG AAA ✓ Pass

Any Text WCAG AAA ✓ Pass

Black Background



Color Contrast Check

Large Text (above 18pt) WCAG AA × Fail

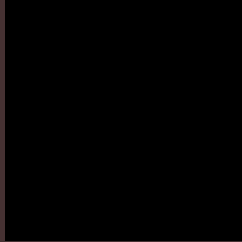
Any Text WCAG AA × Fail

Large Text (above 18pt) WCAG AAA × Fail

Any Text WCAG AAA × Fail

If you want to check with other color combinations, try the [Color Contrast Checker](#).

HunterLab 19.5507, 4.7163, 2.6316 Background



This preview shows how black text looks on a background with the HunterLab color 19.5507, 4.7163, 2.6316.

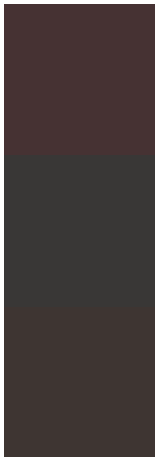


This preview shows how white text looks on a background with the HunterLab color 19.5507, 4.7163,

Color Blindness Simulation

Color vision deficiency is a very complex topic, and I could not describe the different causes any better than Wikipedia does, so if you want to learn more, you should check out their [article about color blindness](#).

Dichromacy



Original Color

19.5507, 4.7163, 2.6316

Protanopia

19.6687, -0.6655, 1.5876

Deuteranopia

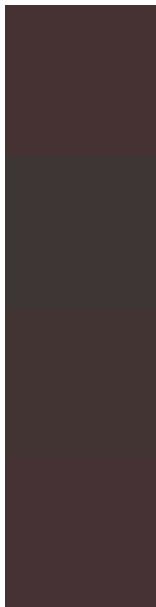
19.4952, 1.0010, 2.8530



Tritanopia

19.5968, 4.9547, 1.9718

Trichromacy



Original Color

19.5507, 4.7163, 2.6316

Protanomaly

19.5637, 1.3684, 1.8714

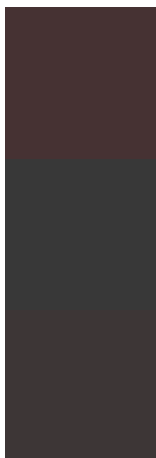
Deuteranomaly

19.5195, 2.2707, 2.9016

Tritanomaly

19.5735, 4.8344, 2.3048

Monochromacy



Original Color

19.5507, 4.7163, 2.6316

Achromatopsia

19.8862, -1.0611, 1.0805

Achromatomaly

19.7403, 0.8059, 1.6956

CSS Examples

Text

The CSS property to change the color of the text to HunterLab 19.5507, 4.7163, 2.6316 is called "color". The color property can be set on classes, ids or directly on the HTML element.

This example shows how text in the color `rgb(70, 50, 51)` looks like.

```
.text, #text, p{  
    color:rgb(70, 50, 51)  
}
```

If you want to add a text shadow in that color use the text-shadow property, you can generate a text shadow directly with our [CSS Text Shadow Generator](#).

Here you see how black text with a 4 pixel rgb(70, 50, 51) colored shadow looks like.

```
.shadow{ text-shadow: 4px 4px 2px rgb(70, 50, 51) }
```

Border

The CSS property to change the border of an element to HunterLab 19.5507, 4.7163, 2.6316 is called "border". The border property can be set on classes, ids or directly on the HTML element.

This example shows the color as border, it can be applied via the CSS property "border" or "border-color".

```
.border, #border, table{ border:4px solid rgb(70, 50, 51) }
```


If only the border color should be changed use the property `border-color`.

```
.border{ border-color:rgb(70, 50, 51) }
```

If you want to add a box shadow in that color use:

Here you see how a box with a 4 pixel `rgb(70, 50, 51)` colored shadow looks like.

```
.boxshadow{ -moz-box-shadow:4px 4px 4px  
4px rgb(70, 50, 51); -webkit-box-  
shadow:4px 4px 4px 4px rgb(70, 50, 51);  
box-shadow:4px 4px 4px 4px rgb(70, 50, 51)  
}
```

Background

The CSS property to change the background color of an element to HunterLab 19.5507, 4.7163, 2.6316 is called "background". The background property can be set on classes, ids or directly on the HTML element.

```
.background, #background, body{  
background: rgb(70, 50, 51) }
```

If only the background color should be changed can be used:

```
.background{ background-color: rgb(70, 50,  
51) }
```

This example shows the color as background, it is applied via the CSS property "background".

To optimize and compress your CSS code, you can use our [online CSS compressor and optimizer](#) based on csstidy. If you want to create a linear or radial gradient as background or border, check our [CSS Gradient Generator](#).

Hey! You found this booklet interesting? Support Converting Colors with the new Membership Option!

The pro membership hides all ads, plus gives you double the colors in the color bucket, and more awesome pro features!

[Learn more, Memberships starting at \\$2.50/m!](#)

**Follow me
on Twitter!**

@ConvertingColor