

Converting Colors

HunterLab(19.6484, 8.7641,
5.5594)

Have a look what the booklet for
HunterLab(19.6484, 8.7641, 5.5594)
contains.

HunterLab(19.5618, 8.6831, 5.5667)	3
<i>Conversions</i>	4
<i>Details</i>	6
<i>Harmonies</i>	12
<i>Previews</i>	24
<i>Color Blindness Simulation</i>	28
<i>CSS Examples</i>	31

Color

**HunterLab(19.5618, 8.6831,
5.5667)**

Conversions

Conversions Part 1

Format	Color
Hex	502E2A
RGB	80, 46, 42
RGB Percent	31%, 18%, 16%
CMY	0.6863, 0.8196, 0.8353
CMYK	0.00, 0.42, 0.47, 0.69
HSL	6°, 31%, 24%
HSV	6°, 47%, 31%
XYZ	4.7032, 3.8266, 2.6812
YIQ	55.7100, 21.5480, 5.9640

Conversions

Conversions Part 2

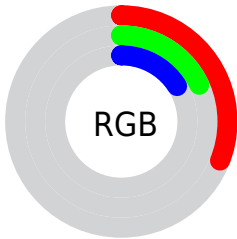
Format	Color
RYB	80, 46, 42
Decimal	5254698
CIELab	23.09, 15.07, 9.21
CIELCh	23, 17.663, 31.429
Yxy	3.8268, 0.4195, 0.3413
Android (android.graphics.Color)	4283444778 (0xFF502E2A)
YUV	55.7100, -6.7590, 21.3023
Hunter-Lab	19.5618, 8.6831, 5.5667

Details

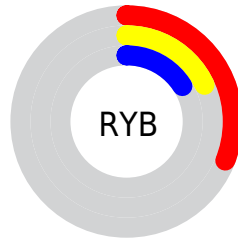
The HunterLab color **19.5618, 8.6831, 5.5667** is a dark color, and the websafe version is hex **663333**. A complement of this color would be **24.9801, -8.0786, -2.7622**, and the grayscale version is **19.8050, -1.0567, 1.0760**.

A 20% lighter version of the original color is **36.2873, 9.8283, 7.7995**, and **5.9777, 10.2369, 3.8626** is the 20% darker color. If you saturate the color by 10%, you get **18.0606, 11.0650, 6.3543**, and if you desaturate by 10%, it is **21.2051, 6.3638, 4.7404**.

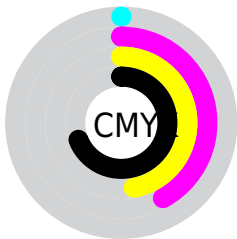
Distribution



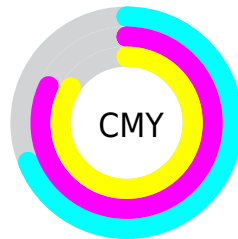
- Red (31%)
- Green (18%)
- Blue (16%)



- Red (31%)
- Yellow (18%)
- Blue (16%)



- Cyan (0%)
- Magenta (42%)
- Yellow (47%)
- Black (69%)



- Cyan (69%)
- Magenta (82%)
- Yellow (84%)

Brightness & Saturation Gradients

These gradients show how the HunterLab color 19.5618, 8.6831, 5.5667 changes by changing the brightness by 10 percent. The first figure shows a shift by +10% for each color and the second figure -10%.

Similar to the brightness gradients but the following saturation gradients show a change of the HunterLab color 19.5618, 8.6831, 5.5667 by changing the saturation by 10% instead.

■ 19.5618, 8.6831,
5.5667

■ 19.5618, 8.6831,
5.5667

■ 117.3963, 10.3573,
15.4150

■ 12.5585, 7.9730,
4.3815

■ 36.3571, 9.6693,
7.7865

■ 5.8492, 10.9157,
4.0945

■ 45.9664, 9.9950,
8.8669

0.0000, NaN, NaN

0.0000, NaN, NaN

■ 56.2988, 10.2301,
9.9428

0.0000, NaN, NaN

■ 67.3070, 10.3855,
11.0207

0.0000, NaN, NaN

■ 78.9516, 10.4697,
12.1044

0.0000, NaN, NaN

0.0000, NaN, NaN

■ 91.1997, 10.4896,

13.1969

0.0000, NaN, NaN

104.0228, 10.4506,
14.2999

19.5618, 8.6831,
5.5667

19.5618, 8.6831,
5.5667

18.0606, 11.0650,
6.3543

21.2051, 6.3638,
4.7404

16.7222, 13.4643,
7.0747

22.9696, 4.1338,
3.8933

15.5708, 15.7991,
7.6921

24.8392, 1.9999,
3.0376

14.6285, 17.9537,
8.1644

26.7999, -0.0397,
2.1803

13.8982, 19.7321,
8.6644

28.8403, -1.9916,
1.3254

■ 13.7418, 20.1126,
8.8197

■ 30.9510, -3.8645,
0.4746

■ 33.1243, -5.6675,
-0.3715

■ 35.3537, -7.4098,
-1.2129

■ 37.6338, -9.0994,
-2.0502

Harmonies

Analogous

The Analogous color harmony consists of three colors that are next to each other on the color wheel.



19.5623, 10.5215, 1.3108



19.5618, 8.6831, 5.5667



19.5623, 4.2015, 7.9319

Triad

The Triadic color harmony groups three colors that are evenly spaced from another and form a triangle on the color wheel.



19.5623, 8.6821, 5.5670



19.5623, -9.3936, 5.2431



19.5623, -0.7839, -11.6891

Complementary

The Complementary color scheme is a pair of colors which are on the opposite of each other on the color wheel.



19.5618, 8.6831, 5.5667



24.9801, -8.0786, -2.7622

Split Complementary

Split-complementary colors differ from the complementary color scheme. The scheme consists of three colors, the original color and two neighbors of the complement color.



19.5623, -5.7906, -9.8163



19.5618, 8.6831, 5.5667



19.5623, -10.4241, 0.8156

Square

The Square scheme is like the rectangle color scheme, but the four colors are evenly spaced on the color wheel.



19.5623, 8.6821, 5.5670



19.5623, -6.1955, 7.7838



19.5623, -9.1784, -4.8525



19.5623, 4.7008, -9.4436

Rectangle

The Rectangle color scheme consists of four colors that form a rectangle on the color wheel.



19.5618, 8.6831, 5.5667



19.5623, 0.5352, 8.5585



19.5623, -9.1784, -4.8525



19.5623, -2.5763, -11.5178

Sweetspot

The Sweet Spot groups the original color and five complimentary colors.



19.5623, 8.6821, 5.5670



33.5751, 1.8232, 3.6738



19.7130, 14.8310, -8.2679



16.9262, 1.1125, 1.9474



67.9972, -3.6282, 3.6944



19.0543, -1.0167, 1.0353

Same Dimension

The Same Dimension uses a secret algorithm to generate beautiful new colors.



19.5623, 8.6821, 5.5670



23.5653, 15.1150, 8.5502



23.7283, 0.6402, 9.1590



13.8982, 0.1098, 1.1972



17.9323, 27.2758, 11.5273



42.2323, 68.2377, 27.2180

Inverse Universe

The Inverse Universe completely reimagines the original color for something new.



24.9801, -8.0786, -2.7622



32.1781, -11.9317, -4.7831



20.0438, -0.5600, -10.1085



14.4552, -1.5747, 0.3500



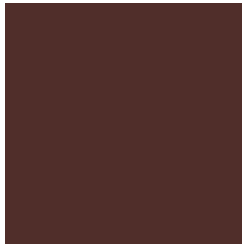
29.8905, -13.5598, -8.0888



71.2401, -31.8778, -20.2289

Previews

White Background



This preview shows how the HunterLab color 19.5618, 8.6831, 5.5667 looks on a white background.

Color Contrast Check

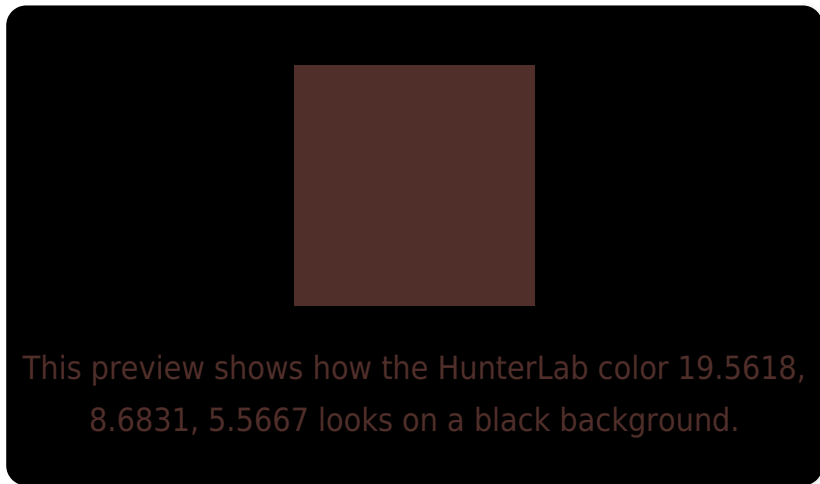
Large Text (above 18pt) WCAG AA ✓ Pass

Any Text WCAG AA ✓ Pass

Large Text (above 18pt) WCAG AAA ✓ Pass

Any Text WCAG AAA ✓ Pass

Black Background



Color Contrast Check

Large Text (above 18pt) WCAG AA × Fail

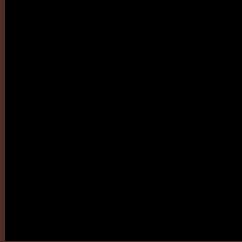
Any Text WCAG AA × Fail

Large Text (above 18pt) WCAG AAA × Fail

Any Text WCAG AAA × Fail

If you want to check with other color combinations, try the [Color Contrast Checker](#).

HunterLab 19.5618, 8.6831, 5.5667 Background



This preview shows how black text looks on a background with the HunterLab color 19.5618, 8.6831, 5.5667.

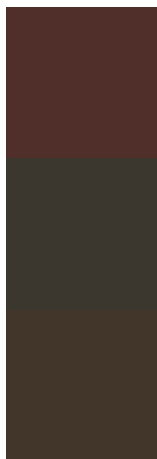


This preview shows how white text looks on a background with the HunterLab color 19.5618, 8.6831,

Color Blindness Simulation

Color vision deficiency is a very complex topic, and I could not describe the different causes any better than Wikipedia does, so if you want to learn more, you should check out their [article about color blindness](#).

Dichromacy



Original Color

19.5618, 8.6831, 5.5667

Protanopia

19.6455, -1.0976, 4.2854

Deuteranopia

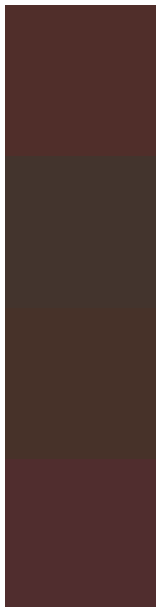
19.6585, 1.1925, 5.8073



Tritanopia

19.4824, 9.7020, 3.6649

Trichromacy



Original Color

19.5618, 8.6831, 5.5667

Protanomaly

19.5927, 2.3042, 4.6005

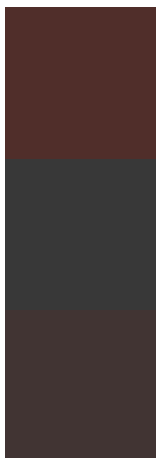
Deuteranomaly

19.4445, 3.9714, 5.6545

Tritanomaly

19.4409, 9.4975, 4.2628

Monochromacy



Original Color

19.5618, 8.6831, 5.5667

Achromatopsia

19.8862, -1.0611, 1.0805

Achromatomaly

19.5418, 2.3892, 2.5810

CSS Examples

Text

The CSS property to change the color of the text to HunterLab 19.5618, 8.6831, 5.5667 is called "color". The color property can be set on classes, ids or directly on the HTML element.

This example shows how text in the color `rgb(80, 46, 42)` looks like.

```
.text, #text, p{  
    color:rgb(80, 46, 42)  
}
```

If you want to add a text shadow in that color use the text-shadow property, you can generate a text shadow directly with our [CSS Text Shadow Generator](#).

Here you see how black text with a 4 pixel rgb(80, 46, 42) colored shadow looks like.

```
.shadow{ text-shadow: 4px 4px 2px rgb(80, 46, 42) }
```

Border

The CSS property to change the border of an element to HunterLab 19.5618, 8.6831, 5.5667 is called "border". The border property can be set on classes, ids or directly on the HTML element.

This example shows the color as border, it can be applied via the CSS property "border" or "border-color".

```
.border, #border, table{ border:4px solid rgb(80, 46, 42) }
```


If only the border color should be changed use the property border-color.

```
.border{ border-color:rgb(80, 46, 42) }
```

If you want to add a box shadow in that color use:

Here you see how a box with a 4 pixel rgb(80, 46, 42) colored shadow looks like.

```
.boxshadow{ -moz-box-shadow:4px 4px 4px  
4px rgb(80, 46, 42); -webkit-box-  
shadow:4px 4px 4px 4px rgb(80, 46, 42);  
box-shadow:4px 4px 4px 4px rgb(80, 46, 42)  
}
```

Background

The CSS property to change the background color of an element to HunterLab 19.5618, 8.6831, 5.5667 is called "background". The background property can be set on classes, ids or directly on the HTML element.

```
.background, #background, body{  
background: rgb(80, 46, 42) }
```

If only the background color should be changed can be used:

```
.background{ background-color: rgb(80, 46,  
42) }
```

This example shows the color as background, it is applied via the CSS property "background".

To optimize and compress your CSS code, you can use our [online CSS compressor and optimizer](#) based on csstidy. If you want to create a linear or radial gradient as background or border, check our [CSS Gradient Generator](#).

Hey! You found this booklet interesting? Support Converting Colors with the new Membership Option!

The pro membership hides all ads, plus gives you double the colors in the color bucket, and more awesome pro features!

[Learn more, Memberships starting at \\$2.50/m!](#)

**Follow me
on Twitter!**

@ConvertingColor