

Converting Colors

HunterLab(19.6495, 11.6193,
7.5502)

Have a look what the booklet for
HunterLab(19.6495, 11.6193,
7.5502) contains.

HunterLab(19.6859, 11.7729, 7.5474)	3
<i>Conversions</i>	4
<i>Details</i>	6
<i>Harmonies</i>	12
<i>Previews</i>	24
<i>Color Blindness Simulation</i>	28
<i>CSS Examples</i>	31

Color

**HunterLab(19.6859, 11.7729,
7.5474)**

Conversions

Conversions Part 1

Format	Color
Hex	572B23
RGB	87, 43, 35
RGB Percent	34%, 17%, 14%
CMY	0.6588, 0.8314, 0.8627
CMYK	0.00, 0.51, 0.60, 0.66
HSL	9°, 43%, 24%
HSV	9°, 60%, 34%
XYZ	5.0977, 3.8753, 2.0694
YIQ	55.2440, 28.7920, 6.8400

Conversions

Conversions Part 2

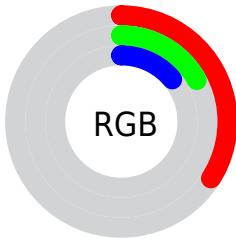
Format	Color
RYB	87, 44, 35
Decimal	5712675
CIELab	23.26, 19.36, 14.31
CIELCh	23, 24.070, 36.472
Yxy	3.8755, 0.4616, 0.3510
Android (android.graphics.Color)	4283902755 (0xFF572B23)
YUV	55.2440, -9.9803, 27.8500
Hunter-Lab	19.6859, 11.7729, 7.5474

Details

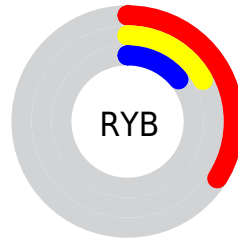
The HunterLab color **19.6859, 11.7729, 7.5474** is a dark color, and the websafe version is hex **663333**. A complement of this color would be **25.7624, -8.9911, -5.0341**, and the grayscale version is **19.6553, -1.0488, 1.0679**.

A 20% lighter version of the original color is **36.4482, 13.5884, 10.6642**, and **6.7165, 11.5022, 4.3401** is the 20% darker color. If you saturate the color by 10%, you get **18.2821, 14.2899, 8.2887**, and if you desaturate by 10%, it is **21.2563, 9.2877, 6.6962**.

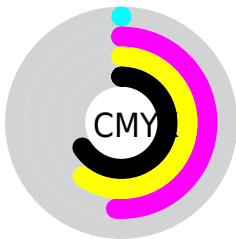
Distribution



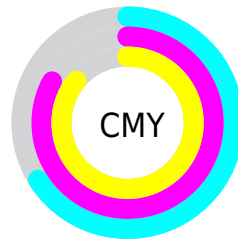
- Red (34%)
- Green (17%)
- Blue (14%)



- Red (34%)
- Yellow (17%)
- Blue (14%)



- Cyan (0%)
- Magenta (51%)
- Yellow (60%)
- Black (66%)



- Cyan (66%)
- Magenta (83%)
- Yellow (86%)

Brightness & Saturation Gradients

These gradients show how the HunterLab color 19.6859, 11.7729, 7.5474 changes by changing the brightness by 10 percent. The first figure shows a shift by +10% for each color and the second figure -10%.

Similar to the brightness gradients but the following saturation gradients show a change of the HunterLab color 19.6859, 11.7729, 7.5474 by changing the saturation by 10% instead.

■ 19.6859, 11.7729,
7.5474

■ 19.6859, 11.7729,
7.5474

■ 117.6217, 15.2472,
20.1088

■ 12.6657, 10.8150,
6.0688

■ 36.5097, 13.2264,
10.5677

■ 6.0035, 13.7282,
4.2025

■ 46.1313, 13.7688,
11.9850

0.0000, NaN, NaN

0.0000, NaN, NaN

■ 56.4753, 14.2101,
13.3692

0.0000, NaN, NaN

■ 67.4942, 14.5625,
14.7323

0.0000, NaN, NaN

■ 79.1491, 14.8353,
16.0828

0.0000, NaN, NaN

0.0000, NaN, NaN

■ 91.4069, 15.0364,

17.4263

0.0000, NaN, NaN

104.2393, 15.1720,
18.7673

19.6859, 11.7729,
7.5474

19.6859, 11.7729,
7.5474

18.2821, 14.2899,
8.2887

21.2563, 9.2877,
6.6962

17.0660, 16.7660,
8.8804

22.9701, 6.8835,
5.7662

16.0596, 19.0883,
9.2865

24.8087, 4.5809,
4.7823

15.2611, 21.0465,
9.7499

26.7557, 2.3866,
3.7615

15.2451, 21.0858,
9.7631

28.7972, 0.2981,
2.7157

■ 30.9217, -1.6921,
1.6527

■ 33.1195, -3.5932,
0.5775

■ 35.3828, -5.4153,
-0.5067

■ 37.7048, -7.1680,
-1.5980

Harmonies

Analogous

The Analogous color harmony consists of three colors that are next to each other on the color wheel.



19.6864, 15.2074, 2.5395



19.6859, 11.7729, 7.5474



19.6864, 4.9677, 9.8904

Triad

The Triadic color harmony groups three colors that are evenly spaced from another and form a triangle on the color wheel.



19.6864, 11.7717, 7.5477



19.6864, -12.4897, 5.7522



19.6864, 0.5811, -17.7226

Complementary

The Complementary color scheme is a pair of colors which are on the opposite of each other on the color wheel.



19.6859, 11.7729, 7.5474



25.7624, -8.9911, -5.0341

Split Complementary

Split-complementary colors differ from the complementary color scheme. The scheme consists of three colors, the original color and two neighbors of the complement color.



19.6864, -6.4244, -15.8544



19.6859, 11.7729, 7.5474



19.6864, -13.3067, -0.5189

Square

The Square scheme is like the rectangle color scheme, but the four colors are evenly spaced on the color wheel.



19.6864, 11.7717, 7.5477



19.6864, -8.8280, 9.1541



19.6864, -11.2523, -8.8122



19.6864, 8.1579, -13.2473

Rectangle

The Rectangle color scheme consists of four colors that form a rectangle on the color wheel.



19.6859, 11.7729, 7.5474



19.6864, -0.1667, 10.3695



19.6864, -11.2523, -8.8122



19.6864, -1.9209, -17.8339

Sweetspot

The Sweet Spot groups the original color and five complimentary colors.



19.6864, 11.7717, 7.5477



35.2637, 2.7859, 4.7527



19.4827, 20.4199, -10.2648



17.1785, 1.6323, 2.4717



69.0652, -3.6851, 3.7524



19.9203, -1.0629, 1.0823

Same Dimension

The Same Dimension uses a secret algorithm to generate beautiful new colors.



19.6864, 11.7717, 7.5477



23.1281, 20.1532, 11.2069



25.2572, 0.6750, 11.8424



14.7106, 0.0485, 1.3240



18.7538, 26.8399, 12.0259



43.4307, 66.8725, 27.9325

Inverse Universe

The Inverse Universe completely reimagines the original color for something new.



25.7624, -8.9911, -5.0341



32.4684, -12.5724, -8.3125



18.9999, 1.4706, -16.4040



15.2099, -1.5948, 0.3034



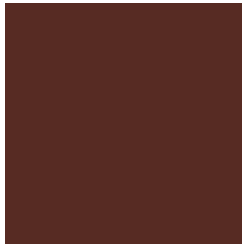
29.1215, -11.9325, -10.6405



68.2571, -27.2795, -26.4268

Previews

White Background



This preview shows how the HunterLab color 19.6859, 11.7729, 7.5474 looks on a white background.

Color Contrast Check

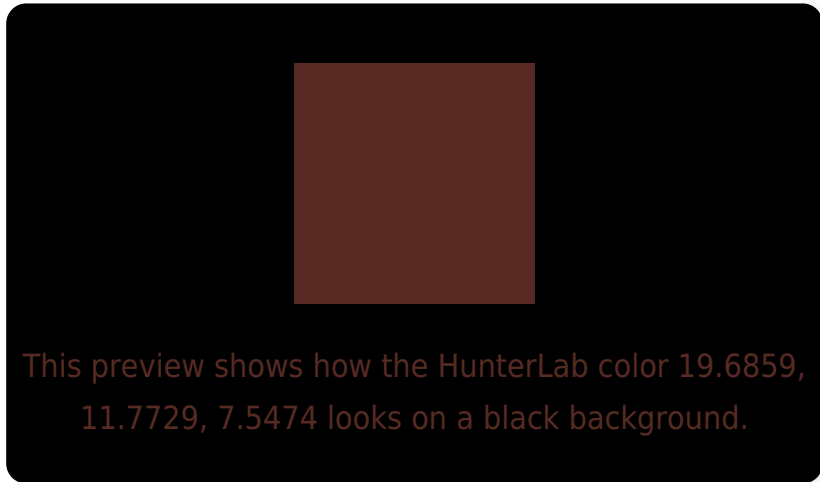
Large Text (above 18pt) WCAG AA ✓ Pass

Any Text WCAG AA ✓ Pass

Large Text (above 18pt) WCAG AAA ✓ Pass

Any Text WCAG AAA ✓ Pass

Black Background



Color Contrast Check

Large Text (above 18pt) WCAG AA × Fail

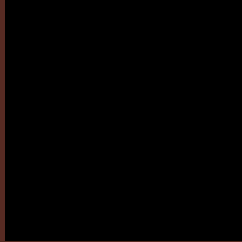
Any Text WCAG AA × Fail

Large Text (above 18pt) WCAG AAA × Fail

Any Text WCAG AAA × Fail

If you want to check with other color combinations, try the [Color Contrast Checker](#).

HunterLab 19.6859, 11.7729, 7.5474 Background



This preview shows how black text looks on a background with the HunterLab color 19.6859, 11.7729, 7.5474.

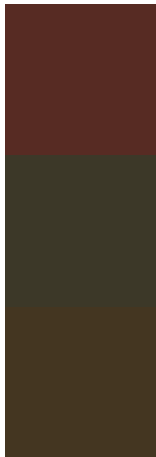


This preview shows how white text looks on a background with the HunterLab color 19.6859, 11.7729,

Color Blindness Simulation

Color vision deficiency is a very complex topic, and I could not describe the different causes any better than Wikipedia does, so if you want to learn more, you should check out their [article about color blindness](#).

Dichromacy



Original Color

19.6859, 11.7729, 7.5474

Protanopia

19.8550, -1.8363, 6.2078

Deuteranopia

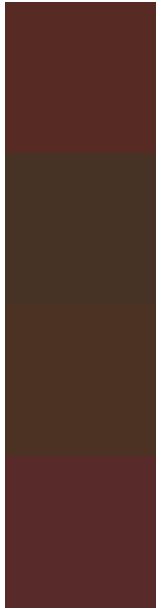
19.9426, 0.7024, 8.0231



Tritanopia

19.7992, 13.3690, 4.9999

Trichromacy



Original Color

19.6859, 11.7729, 7.5474

Protanomaly

19.5184, 2.9674, 6.5089

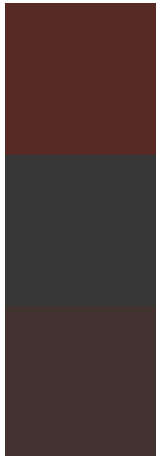
Deuteranomaly

19.7296, 4.6572, 7.6909

Tritanomaly

19.7249, 13.0155, 6.0766

Monochromacy



Original Color

19.6859, 11.7729, 7.5474

Achromatopsia

19.5459, -1.0429, 1.0620

Achromatomaly

19.4277, 3.0479, 3.4907

CSS Examples

Text

The CSS property to change the color of the text to HunterLab 19.6859, 11.7729, 7.5474 is called "color". The color property can be set on classes, ids or directly on the HTML element.

This example shows how text in the color `rgb(87, 43, 35)` looks like.

```
.text, #text, p{  
    color:rgb(87, 43, 35)  
}
```

If you want to add a text shadow in that color use the text-shadow property, you can generate a text shadow directly with our [CSS Text Shadow Generator](#).

Here you see how black text with a 4 pixel rgb(87, 43, 35) colored shadow looks like.

```
.shadow{ text-shadow: 4px 4px 2px rgb(87, 43, 35) }
```

Border

The CSS property to change the border of an element to HunterLab 19.6859, 11.7729, 7.5474 is called "border". The border property can be set on classes, ids or directly on the HTML element.

This example shows the color as border, it can be applied via the CSS property "border" or "border-color".

```
.border, #border, table{ border:4px solid rgb(87, 43, 35) }
```


If only the border color should be changed use the property `border-color`.

```
.border{ border-color:rgb(87, 43, 35) }
```

If you want to add a box shadow in that color use:

Here you see how a box with a 4 pixel `rgb(87, 43, 35)` colored shadow looks like.

```
.boxshadow{ -moz-box-shadow:4px 4px 4px  
4px rgb(87, 43, 35); -webkit-box-  
shadow:4px 4px 4px 4px rgb(87, 43, 35);  
box-shadow:4px 4px 4px 4px rgb(87, 43, 35)  
}
```

Background

The CSS property to change the background color of an element to HunterLab 19.6859, 11.7729, 7.5474 is called "background". The background property can be set on classes, ids or directly on the HTML element.

```
.background, #background, body{  
background: rgb(87, 43, 35) }
```

If only the background color should be changed can be used:

```
.background{ background-color: rgb(87, 43,  
35) }
```

This example shows the color as background, it is applied via the CSS property "background".

To optimize and compress your CSS code, you can use our [online CSS compressor and optimizer](#) based on csstidy. If you want to create a linear or radial gradient as background or border, check our [CSS Gradient Generator](#).

Hey! You found this booklet interesting? Support Converting Colors with the new Membership Option!

The pro membership hides all ads, plus gives you double the colors in the color bucket, and more awesome pro features!

[Learn more, Memberships starting at \\$2.50/m!](#)

**Follow me
on Twitter!**

@ConvertingColor