

Converting Colors

HunterLab(19.7058, 11.9660,
6.9880)

Have a look what the booklet for
HunterLab(19.7058, 11.9660,
6.9880) contains.

HunterLab(19.7169, 11.9225, 7.0950)	3
<i>Conversions</i>	4
<i>Details</i>	6
<i>Harmonies</i>	12
<i>Previews</i>	24
<i>Color Blindness Simulation</i>	28
<i>CSS Examples</i>	31

Color

**HunterLab(19.7169, 11.9225,
7.0950)**

Conversions

Conversions Part 1

Format	Color
Hex	572B25
RGB	87, 43, 37
RGB Percent	34%, 17%, 15%
CMY	0.6588, 0.8314, 0.8549
CMYK	0.00, 0.51, 0.57, 0.66
HSL	7°, 40%, 24%
HSV	7°, 57%, 34%
XYZ	5.1283, 3.8876, 2.2304
YIQ	55.4720, 28.1500, 7.4620

Conversions

Conversions Part 2

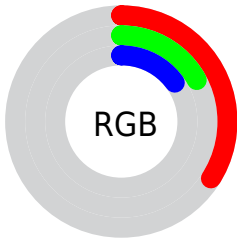
Format	Color
RYB	87, 44, 37
Decimal	5712677
CIELab	23.30, 19.55, 13.03
CIELCh	23, 23.498, 33.678
Yxy	3.8878, 0.4560, 0.3457
Android (android.graphics.Color)	4283902757 (0xFF572B25)
YUV	55.4720, -9.1067, 27.6501
Hunter-Lab	19.7169, 11.9225, 7.0950

Details

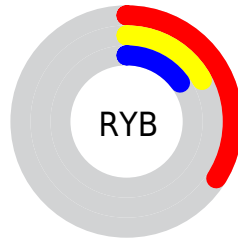
The HunterLab color **19.7169, 11.9225, 7.0950** is a dark color, and the websafe version is hex **663333**. A complement of this color would be **26.3930, -9.4943, -4.1585**, and the grayscale version is **19.7302, -1.0528, 1.0720**.

A 20% lighter version of the original color is **36.6203, 13.0587, 9.8696**, and **6.7165, 11.5022, 4.3401** is the 20% darker color. If you saturate the color by 10%, you get **18.2596, 14.5290, 7.8770**, and if you desaturate by 10%, it is **21.3519, 9.3382, 6.2287**.

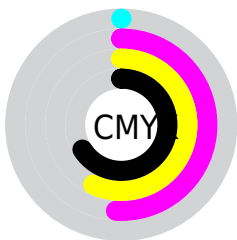
Distribution



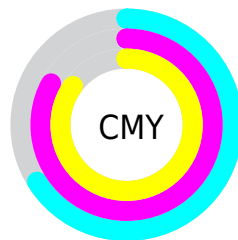
- Red (34%)
- Green (17%)
- Blue (15%)



- Red (34%)
- Yellow (17%)
- Blue (15%)



- Cyan (0%)
- Magenta (51%)
- Yellow (57%)
- Black (66%)



- Cyan (66%)
- Magenta (83%)
- Yellow (85%)

Brightness & Saturation Gradients

These gradients show how the HunterLab color 19.7169, 11.9225, 7.0950 changes by changing the brightness by 10 percent. The first figure shows a shift by +10% for each color and the second figure -10%.

Similar to the brightness gradients but the following saturation gradients show a change of the HunterLab color 19.7169, 11.9225, 7.0950 by changing the saturation by 10% instead.

■ 19.7169, 11.9225,
7.0950

■ 19.7169, 11.9225,
7.0950

■ 117.6779, 15.4756,
18.9631

■ 12.6924, 10.9544,
5.6529

■ 36.5478, 13.3960,
9.9096

■ 6.0414, 13.7811,
4.2290

■ 46.1725, 13.9478,
11.2406

0.0000, NaN, NaN

■ 56.5193, 14.3982,
12.5460

0.0000, NaN, NaN

■ 67.5410, 14.7592,
13.8363

0.0000, NaN, NaN

■ 79.1984, 15.0404,
15.1188

0.0000, NaN, NaN

■ 91.4586, 15.2496,

0.0000, NaN, NaN

16.3985

0.0000, NaN, NaN

104.2933, 15.3929,
17.6790

19.7169, 11.9225,
7.0950

19.7169, 11.9225,
7.0950

18.2596, 14.5290,
7.8770

21.3519, 9.3382,
6.2287

17.0038, 17.0753,
8.5334

23.1392, 6.8306,
5.3084

15.9742, 19.4362,
9.0195

25.0581, 4.4231,
4.3564

15.1767, 21.4117,
9.4798

27.0909, 2.1232,
3.3872

15.0100, 21.8221,
9.6311

29.2224, -0.0717,
2.4097

■ 31.4404, -2.1691,
1.4292

■ 33.7347, -4.1788,
0.4485

■ 36.0969, -6.1111,
-0.5310

■ 38.5200, -7.9759,
-1.5088

Harmonies

Analogous

The Analogous color harmony consists of three colors that are next to each other on the color wheel.



19.7174, 14.8523, 1.9040



19.7169, 11.9225, 7.0950



19.7174, 5.5077, 9.6361

Triad

The Triadic color harmony groups three colors that are evenly spaced from another and form a triangle on the color wheel.



19.7174, 11.9213, 7.0953



19.7174, -12.0443, 6.0890



19.7174, -0.1522, -17.2449

Complementary

The Complementary color scheme is a pair of colors which are on the opposite of each other on the color wheel.



19.7169, 11.9225, 7.0950



26.3930, -9.4943, -4.1585

Split Complementary

Split-complementary colors differ from the complementary color scheme. The scheme consists of three colors, the original color and two neighbors of the complement color.



19.7174, -6.8545, -14.8694



19.7169, 11.9225, 7.0950



19.7174, -13.1118, 0.2048

Square

The Square scheme is like the rectangle color scheme, but the four colors are evenly spaced on the color wheel.



19.7174, 11.9213, 7.0953



19.7174, -8.1945, 9.2195



19.7174, -11.3526, -7.7734



19.7174, 7.2760, -13.4344

Rectangle

The Rectangle color scheme consists of four colors that form a rectangle on the color wheel.



19.7169, 11.9225, 7.0950



19.7174, 0.5035, 10.2203



19.7174, -11.3526, -7.7734



19.7174, -2.5630, -17.1485

Sweetspot

The Sweet Spot groups the original color and five complimentary colors.



19.7174, 11.9213, 7.0953



35.3694, 2.7961, 4.4346



19.8645, 19.9028, -10.7438



17.3319, 1.5311, 2.2553



69.0652, -3.6851, 3.7524



19.9203, -1.0629, 1.0823

Same Dimension

The Same Dimension uses a secret algorithm to generate beautiful new colors.



19.7174, 11.9213, 7.0953



23.2055, 20.2446, 10.6341



25.0478, 1.2154, 11.3125



14.6773, 0.1058, 1.2869



18.4830, 27.7008, 11.8741



42.9330, 68.5060, 27.6544

Inverse Universe

The Inverse Universe completely reimagines the original color for something new.



26.3930, -9.4943, -4.1585



33.4808, -13.4746, -6.8547



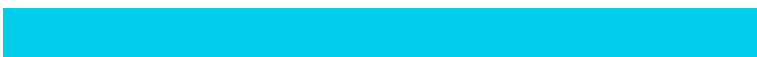
19.8141, 0.5092, -14.7627



15.2447, -1.6508, 0.3445



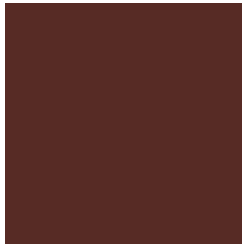
30.1866, -13.3059, -9.0070



70.9424, -30.7651, -22.2589

Previews

White Background



This preview shows how the HunterLab color 19.7169, 11.9225, 7.0950 looks on a white background.

Color Contrast Check

Large Text (above 18pt) WCAG AA ✓ Pass

Any Text WCAG AA ✓ Pass

Large Text (above 18pt) WCAG AAA ✓ Pass

Any Text WCAG AAA ✓ Pass

Black Background



Color Contrast Check

Large Text (above 18pt) WCAG AA × Fail

Any Text WCAG AA × Fail

Large Text (above 18pt) WCAG AAA × Fail

Any Text WCAG AAA × Fail

If you want to check with other color combinations, try the [Color Contrast Checker](#).

HunterLab 19.7169, 11.9225, 7.0950 Background



This preview shows how black text looks on a background with the HunterLab color 19.7169, 11.9225, 7.0950.

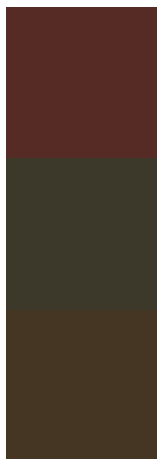


This preview shows how white text looks on a background with the HunterLab color 19.7169, 11.9225,

Color Blindness Simulation

Color vision deficiency is a very complex topic, and I could not describe the different causes any better than Wikipedia does, so if you want to learn more, you should check out their [article about color blindness](#).

Dichromacy



Original Color

19.7169, 11.9225, 7.0950

Protanopia

19.8901, -1.6426, 5.6979

Deuteranopia

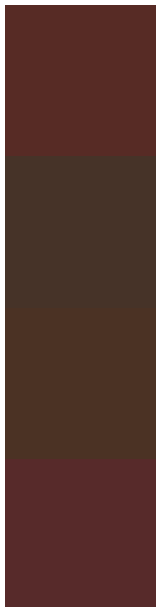
19.9715, 0.8582, 7.6008



Tritanopia

19.6765, 13.0305, 4.8719

Trichromacy



Original Color

19.7169, 11.9225, 7.0950

Protanomaly

19.5524, 3.1463, 6.0157

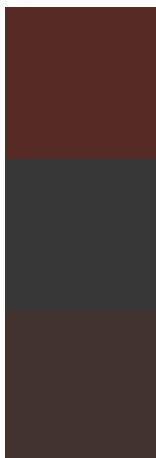
Deuteranomaly

19.7596, 4.8132, 7.2519

Tritanomaly

19.6197, 12.7600, 5.6934

Monochromacy



Original Color

19.7169, 11.9225, 7.0950

Achromatopsia

19.5459, -1.0429, 1.0620

Achromatomaly

19.4277, 3.0479, 3.4907

CSS Examples

Text

The CSS property to change the color of the text to HunterLab 19.7169, 11.9225, 7.0950 is called "color". The color property can be set on classes, ids or directly on the HTML element.

This example shows how text in the color `rgb(87, 43, 37)` looks like.

```
.text, #text, p{  
    color:rgb(87, 43, 37)  
}
```

If you want to add a text shadow in that color use the text-shadow property, you can generate a text shadow directly with our [CSS Text Shadow Generator](#).

Here you see how black text with a 4 pixel rgb(87, 43, 37) colored shadow looks like.

```
.shadow{ text-shadow: 4px 4px 2px rgb(87, 43, 37) }
```

Border

The CSS property to change the border of an element to HunterLab 19.7169, 11.9225, 7.0950 is called "border". The border property can be set on classes, ids or directly on the HTML element.

This example shows the color as border, it can be applied via the CSS property "border" or "border-color".

```
.border, #border, table{ border:4px solid rgb(87, 43, 37) }
```


If only the border color should be changed use the property border-color.

```
.border{ border-color:rgb(87, 43, 37) }
```

If you want to add a box shadow in that color use:

Here you see how a box with a 4 pixel rgb(87, 43, 37) colored shadow looks like.

```
.boxshadow{ -moz-box-shadow:4px 4px 4px  
4px rgb(87, 43, 37); -webkit-box-  
shadow:4px 4px 4px 4px rgb(87, 43, 37);  
box-shadow:4px 4px 4px 4px rgb(87, 43, 37)  
}
```

Background

The CSS property to change the background color of an element to HunterLab 19.7169, 11.9225, 7.0950 is called "background". The background property can be set on classes, ids or directly on the HTML element.

```
.background, #background, body{  
background: rgb(87, 43, 37) }
```

If only the background color should be changed can be used:

```
.background{ background-color: rgb(87, 43,  
37) }
```

This example shows the color as background, it is applied via the CSS property "background".

To optimize and compress your CSS code, you can use our [online CSS compressor and optimizer](#) based on csstidy. If you want to create a linear or radial gradient as background or border, check our [CSS Gradient Generator](#).

Hey! You found this booklet interesting? Support Converting Colors with the new Membership Option!

The pro membership hides all ads, plus gives you double the colors in the color bucket, and more awesome pro features!

[Learn more, Memberships starting at \\$2.50/m!](#)

**Follow me
on Twitter!**

@ConvertingColor