

# Converting Colors

HunterLab(19.7359, 11.8153,  
5.7409)

Have a look what the booklet for  
HunterLab(19.7359, 11.8153,  
5.7409) contains.

|  |    |
|--|----|
| <b>HunterLab(19.6808, 11.9915, 5.7382)</b> ..... | 3  |
| <b><i>Conversions</i></b> .....                  | 4  |
| <b><i>Details</i></b> .....                      | 6  |
| <b><i>Harmonies</i></b> .....                    | 12 |
| <b><i>Previews</i></b> .....                     | 24 |
| <b><i>Color Blindness Simulation</i></b> .....   | 28 |
| <b><i>CSS Examples</i></b> .....                 | 31 |

# Color

**HunterLab(19.6808, 11.9915,  
5.7382)**

# Conversions

## Conversions Part 1

| Format      | Color                    |
|-------------|--------------------------|
| Hex         | 562B2A                   |
| RGB         | 86, 43, 42               |
| RGB Percent | 34%, 17%, 16%            |
| CMY         | 0.6627, 0.8314, 0.8353   |
| CMYK        | 0.00, 0.50, 0.51, 0.66   |
| HSL         | 1°, 34%, 25%             |
| HSV         | 1°, 51%, 34%             |
| XYZ         | 5.1195, 3.8733, 2.6683   |
| YIQ         | 55.7430, 25.9490, 8.8050 |

# Conversions

## Conversions Part 2

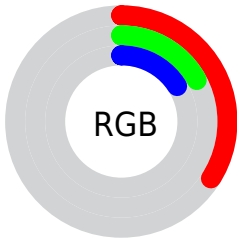
| <b>Format</b>                       | <b>Color</b>                 |
|-------------------------------------|------------------------------|
| <b>RYB</b>                          | 86, 43, 42                   |
| Decimal                             | 5647146                      |
| CIELab                              | 23.25, 19.65, 9.58           |
| CIELCh                              | 23, 21.863, 25.981           |
| Yxy                                 | 3.8735, 0.4390,<br>0.3322    |
| Android<br>(android.graphics.Color) | 4283837226<br>(0xFF562B2A)   |
| YUV                                 | 55.7430, -6.7753,<br>26.5354 |
| Hunter-Lab                          | 19.6808, 11.9915,<br>5.7382  |

# Details

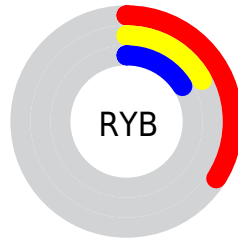
The HunterLab color **19.6808, 11.9915, 5.7382** is a dark color, and the websafe version is hex **663333**. A complement of this color would be **27.6780, -10.4970, -1.9882**, and the grayscale version is **19.8152, -1.0573, 1.0766**.

A 20% lighter version of the original color is **36.6111, 13.2459, 8.1891**, and **6.7165, 11.5022, 4.3401** is the 20% darker color. If you saturate the color by 10%, you get **18.0805, 14.8306, 6.5856**, and if you desaturate by 10%, it is **21.4878, 9.1496, 4.8861**.

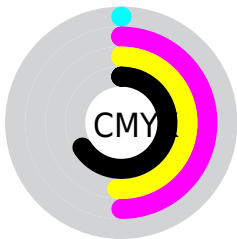
# Distribution



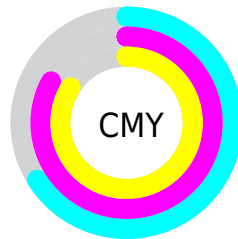
- Red (34%)
- Green (17%)
- Blue (16%)



- Red (34%)
- Yellow (17%)
- Blue (16%)



- Cyan (0%)
- Magenta (50%)
- Yellow (51%)
- Black (66%)



- Cyan (66%)
- Magenta (83%)
- Yellow (84%)

# Brightness & Saturation Gradients

These gradients show how the HunterLab color 19.6808, 11.9915, 5.7382 changes by changing the brightness by 10 percent. The first figure shows a shift by +10% for each color and the second figure -10%.

Similar to the brightness gradients but the following saturation gradients show a change of the HunterLab color 19.6808, 11.9915, 5.7382 by changing the saturation by 10% instead.



■ 19.6808, 11.9915,  
5.7382

■ 19.6808, 11.9915,  
5.7382

■ 117.6124, 15.5898,  
15.7770

■ 12.6613, 11.0171,  
4.5199

■ 36.5034, 13.4769,  
8.0132

■ 5.9973, 13.9595,  
4.1981

■ 46.1245, 14.0342,  
9.1170

0.0000, NaN, NaN

0.0000, NaN, NaN

■ 56.4680, 14.4897,  
10.2147

0.0000, NaN, NaN

■ 67.4865, 14.8557,  
11.3127

0.0000, NaN, NaN

■ 79.1410, 15.1416,  
12.4153

0.0000, NaN, NaN

0.0000, NaN, NaN

■ 91.3984, 15.3553,

13.5257

0.0000, NaN, NaN

104.2304, 15.5029,  
14.6457

19.6808, 11.9915,  
5.7382

19.6808, 11.9915,  
5.7382

18.0805, 14.8306,  
6.5856

21.4878, 9.1496,  
4.8861

16.7188, 17.5565,  
7.3878

23.4695, 6.3745,  
4.0517

15.6278, 20.0032,  
8.0903

25.6000, 3.6959,  
3.2474

14.8285, 21.9750,  
8.6493

27.8575, 1.1231,  
2.4771

14.2160, 23.5765,  
9.1726

30.2240, -1.3469,  
1.7409

■ 32.6853, -3.7226,  
1.0363

■ 35.2296, -6.0152,  
0.3600

■ 37.8475, -8.2356,  
-0.2916

■ 40.5313, -10.3944,  
-0.9217

# Harmonies

## Analogous

The Analogous color harmony consists of three colors that are next to each other on the color wheel.



19.6813, 13.5988, 0.1885



19.6808, 11.9915, 5.7382



19.6813, 6.7277, 8.7891

# Triad

The Triadic color harmony groups three colors that are evenly spaced from another and form a triangle on the color wheel.



19.6813, 11.9903, 5.7385



19.6813, -10.6728, 6.7907



19.6813, -1.9503, -15.5975

# Complementary

The Complementary color scheme is a pair of colors which are on the opposite of each other on the color wheel.



19.6808, 11.9915, 5.7382



27.6780, -10.4970, -1.9882

# Split Complementary

Split-complementary colors differ from the complementary color scheme. The scheme consists of three colors, the original color and two neighbors of the complement color.



19.6813, -7.7828, -12.1131



19.6808, 11.9915, 5.7382



19.6813, -12.3717, 1.9150

# Square

The Square scheme is like the rectangle color scheme, but the four colors are evenly spaced on the color wheel.



19.6813, 11.9903, 5.7385



19.6813, -6.4073, 9.2377



19.6813, -11.3889, -5.1230



19.6813, 4.9470, -13.5252



# Rectangle

The Rectangle color scheme consists of four colors that form a rectangle on the color wheel.



19.6808, 11.9915, 5.7382



19.6813, 2.1840, 9.6654



19.6813, -11.3889, -5.1230



19.6813, -4.0900, -15.0131

# Sweetspot

The Sweet Spot groups the original color and five complimentary colors.



19.6813, 11.9903, 5.7385



35.5129, 2.9455, 3.7117



20.7231, 18.1378, -11.6609



17.3582, 1.6633, 1.8958



69.0652, -3.6851, 3.7524



19.9203, -1.0629, 1.0823



# Same Dimension

The Same Dimension uses a secret algorithm to generate beautiful new colors.



19.6813, 11.9903, 5.7385



23.5351, 20.3097, 8.9147



24.2809, 2.5777, 9.6581



14.5818, 0.2707, 1.1801



17.8465, 29.7999, 11.5186



42.0835, 71.3606, 27.1809



# Inverse Universe

The Inverse Universe completely reimagines the original color for something new.



27.6780, -10.4970, -1.9882



36.0487, -15.5027, -3.3668



21.7916, -1.8739, -10.5587



15.3450, -1.8115, 0.4625



33.3131, -17.1675, -4.5788

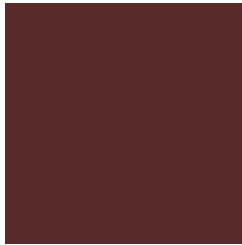


78.8384, -40.5474, -11.0110



# Previews

## White Background



This preview shows how the HunterLab color 19.6808, 11.9915, 5.7382 looks on a white background.

## Color Contrast Check

Large Text (above 18pt) WCAG AA ✓ Pass

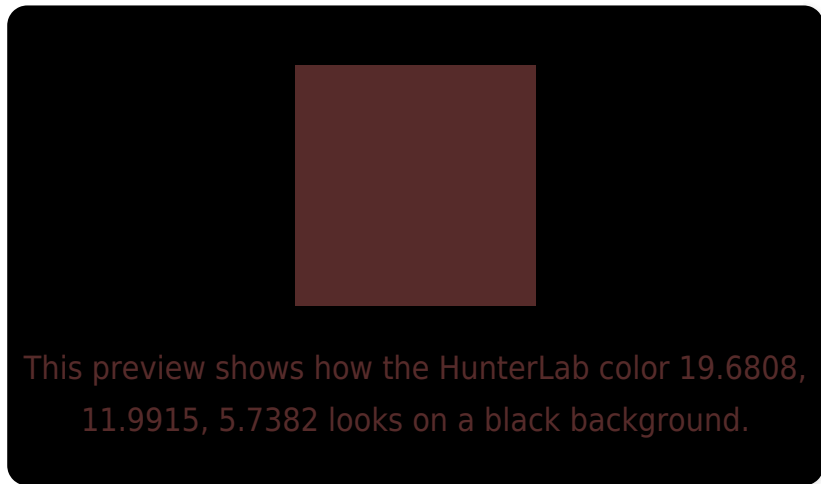
Any Text WCAG AA ✓ Pass

Large Text (above 18pt) WCAG AAA ✓ Pass

Any Text WCAG AAA ✓ Pass



# Black Background



## Color Contrast Check

Large Text (above 18pt) WCAG AA × Fail

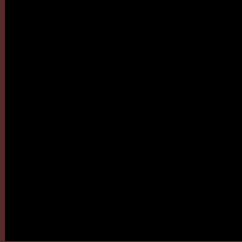
Any Text WCAG AA × Fail

Large Text (above 18pt) WCAG AAA × Fail

Any Text WCAG AAA × Fail

If you want to check with other color combinations, try the [Color Contrast Checker](#).

## HunterLab 19.6808, 11.9915, 5.7382 Background



This preview shows how black text looks on a background with the HunterLab color 19.6808, 11.9915, 5.7382.



This preview shows how white text looks on a background with the HunterLab color 19.6808, 11.9915,



# Color Blindness Simulation

Color vision deficiency is a very complex topic, and I could not describe the different causes any better than Wikipedia does, so if you want to learn more, you should check out their [article about color blindness](#).

## Dichromacy



### Original Color

19.6808, 11.9915, 5.7382

### Protanopia

19.9288, -1.2752, 3.9384

### Deuteranopia

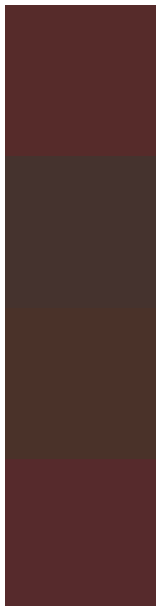
19.9620, 0.9856, 6.3553



## Tritanopia

19.5546, 12.6931, 4.7443

# Trichromacy



## Original Color

19.6808, 11.9915, 5.7382

## Protanomaly

19.5707, 3.4312, 4.2888

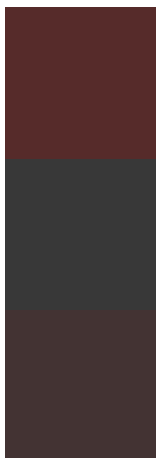
## Deuteranomaly

19.7412, 4.9202, 5.9500

## Tritanomaly

19.5351, 12.6000, 5.0259

# Monochromacy



## Original Color

19.6808, 11.9915, 5.7382

## Achromatopsia

19.8862, -1.0611, 1.0805

## Achromatomaly

19.4935, 3.3940, 2.5452

# CSS Examples

## Text

The CSS property to change the color of the text to HunterLab 19.6808, 11.9915, 5.7382 is called "color". The color property can be set on classes, ids or directly on the HTML element.

This example shows how text in the color `rgb(86, 43, 42)` looks like.

```
.text, #text, p{  
    color:rgb(86, 43, 42)  
}
```

If you want to add a text shadow in that color use the text-shadow property, you can generate a text shadow directly with our [CSS Text Shadow Generator](#).

Here you see how black text with a 4 pixel rgb(86, 43, 42) colored shadow looks like.

```
.shadow{ text-shadow: 4px 4px 2px rgb(86, 43, 42) }
```

## Border

The CSS property to change the border of an element to HunterLab 19.6808, 11.9915, 5.7382 is called "border". The border property can be set on classes, ids or directly on the HTML element.

This example shows the color as border, it can be applied via the CSS property "border" or "border-color".

```
.border, #border, table{ border:4px solid rgb(86, 43, 42) }
```



If only the border color should be changed use the property border-color.

```
.border{ border-color:rgb(86, 43, 42) }
```

If you want to add a box shadow in that color use:

Here you see how a box with a 4 pixel rgb(86, 43, 42) colored shadow looks like.

```
.boxshadow{ -moz-box-shadow:4px 4px 4px  
4px rgb(86, 43, 42); -webkit-box-  
shadow:4px 4px 4px 4px rgb(86, 43, 42);  
box-shadow:4px 4px 4px 4px rgb(86, 43, 42)  
}
```

# Background

The CSS property to change the background color of an element to HunterLab 19.6808, 11.9915, 5.7382 is called "background". The background property can be set on classes, ids or directly on the HTML element.

```
.background, #background, body{  
background: rgb(86, 43, 42) }
```

If only the background color should be changed can be used:

```
.background{ background-color: rgb(86, 43,  
42) }
```

This example shows the color as background, it is applied via the CSS property "background".

To optimize and compress your CSS code, you can use our [online CSS compressor and optimizer](#) based on csstidy. If you want to create a linear or radial gradient as background or border, check our [CSS Gradient Generator](#).

Hey! You found this booklet interesting? Support Converting Colors with the new Membership Option!

The pro membership hides all ads, plus gives you double the colors in the color bucket, and more awesome pro features!

**[Learn more, Memberships starting at \\$2.50/m!](#)**

**Follow me  
on Twitter!**

@ConvertingColor